



LSE public lecture

Beauty and the Beast- Numbers and Public Policy

Andrew Dilnot

St Hugh's College, Oxford

Michael Blastland

Writer and Broadcaster, BBC Radio 4

Professor Henry Wynn

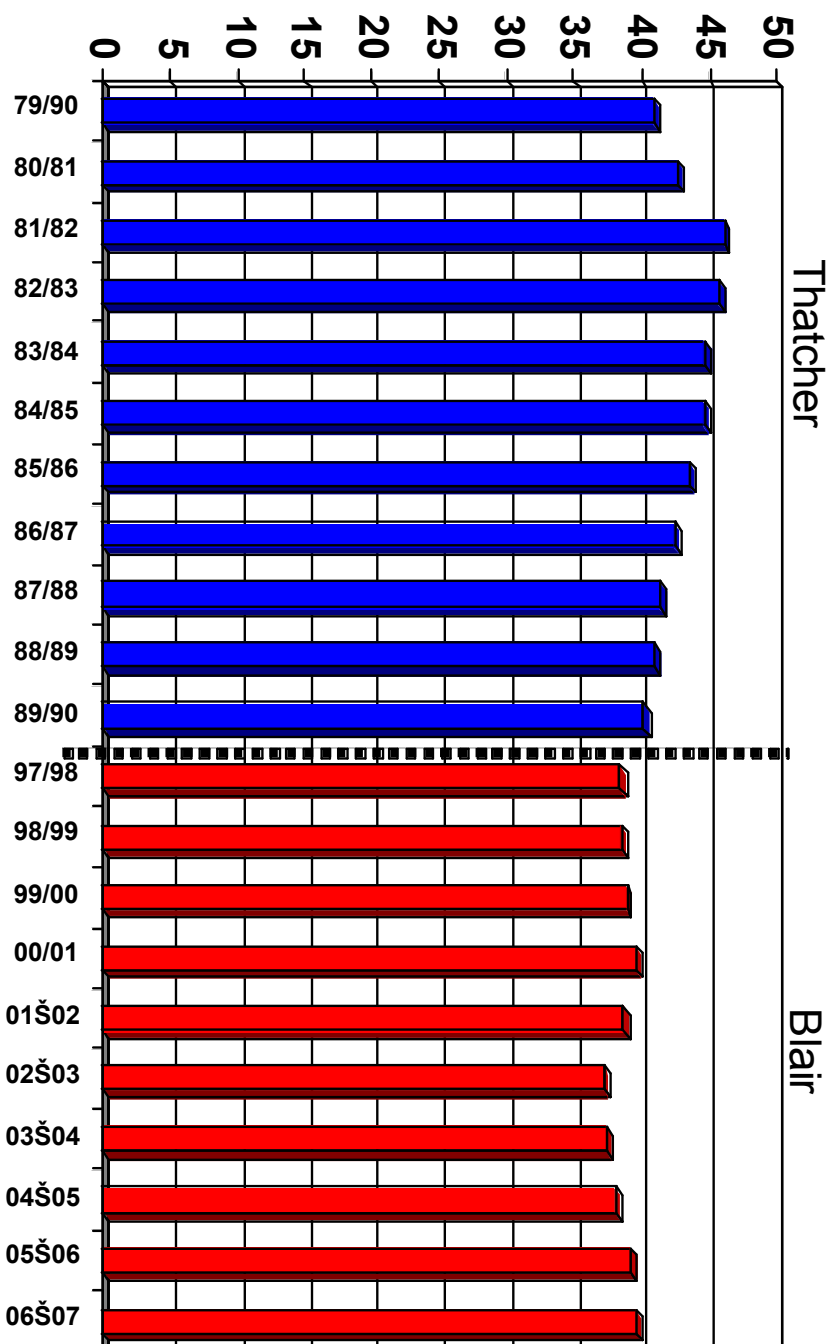
LSE, Chair

Beauty and the Beast

Numbers and Public Policy

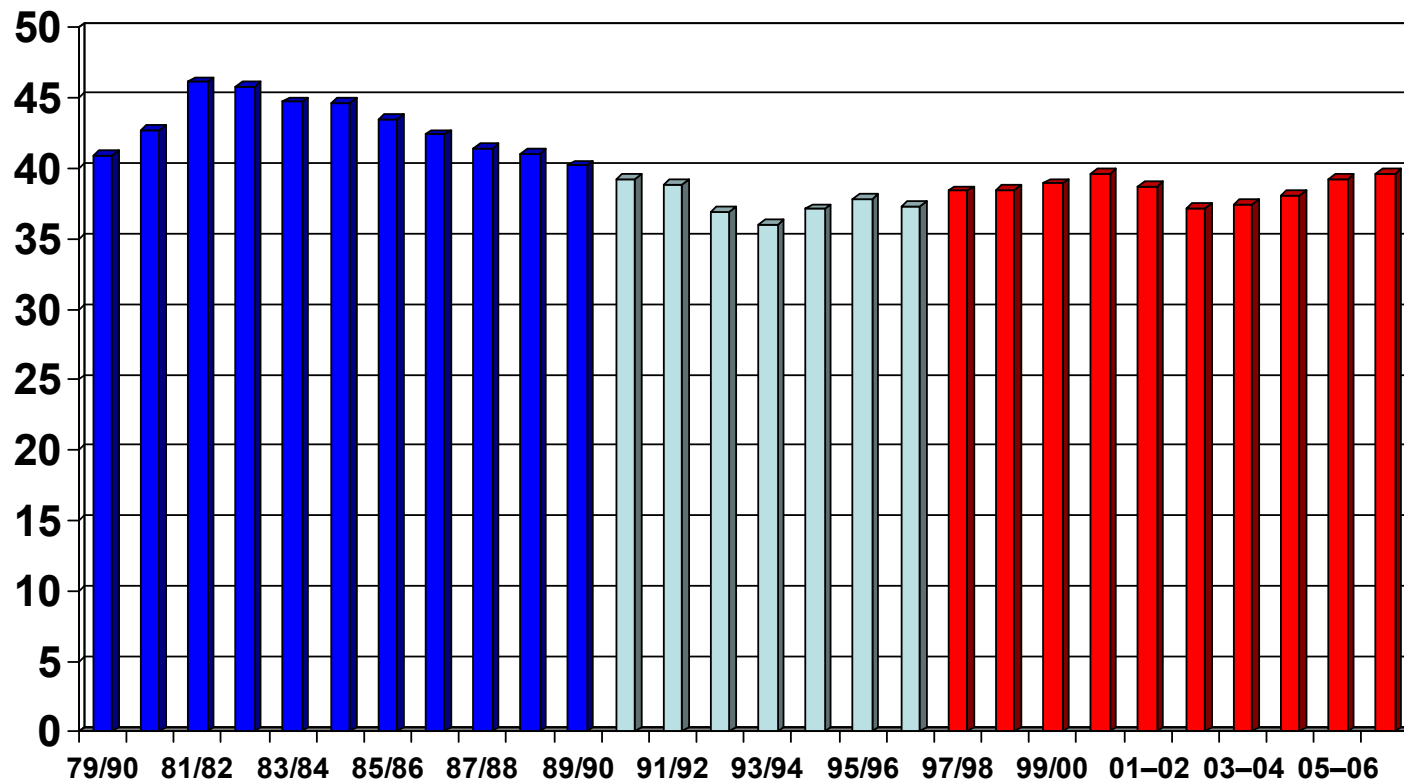
Michael Blastland and Andrew Dilnot

Tax as % of National income



Tax as a proportion of national income.

Inc. Major years



Is that a big number?

- £300m for 1m childcare places over five years

£300m / 1m children = £300 per child

£300 / 5 years = £60 per child per year

£60 / 52 weeks = £1.14 per week.

G8 debt relief of \$50bn

=\$1.5bn annually

=£750m

G8 population = 750m

=£1 per head.

£0?



Unpunished: The 3,000 crimes committed by the under-10s

Last updated at 15:46pm on 2nd September 2007

Comments (35)

The suspects behind almost 3,000 crimes last year, half of them arson or criminal damage, went unpunished - because they were too young to be prosecuted.

Offending by children aged under 10 in England and Wales included about 1,300 incidents of criminal damage and arson and more than 60 sex offences, it has been revealed.

[Home](#)[News](#)[Sport](#)[Business](#)[Travel](#)[Jobs](#)[Motoring](#)[Telegraph TV](#)[SEARCH](#)[News home](#)[UK Politics](#)[Obituaries](#)[Picture galleries](#)[How about that?](#)[News topics](#)[Announcements](#)[Arts](#)[Blogs](#)[Comment](#)[Crossword](#)

Britain in grip of norovirus as cases hit 3m

By Rebecca Smith, Medical Editor

Last Updated: 2:47am GMT 13/01/2008

Three million people have been struck down by the winter vomiting bug - with experts fearing that cases could rise through this month and next.

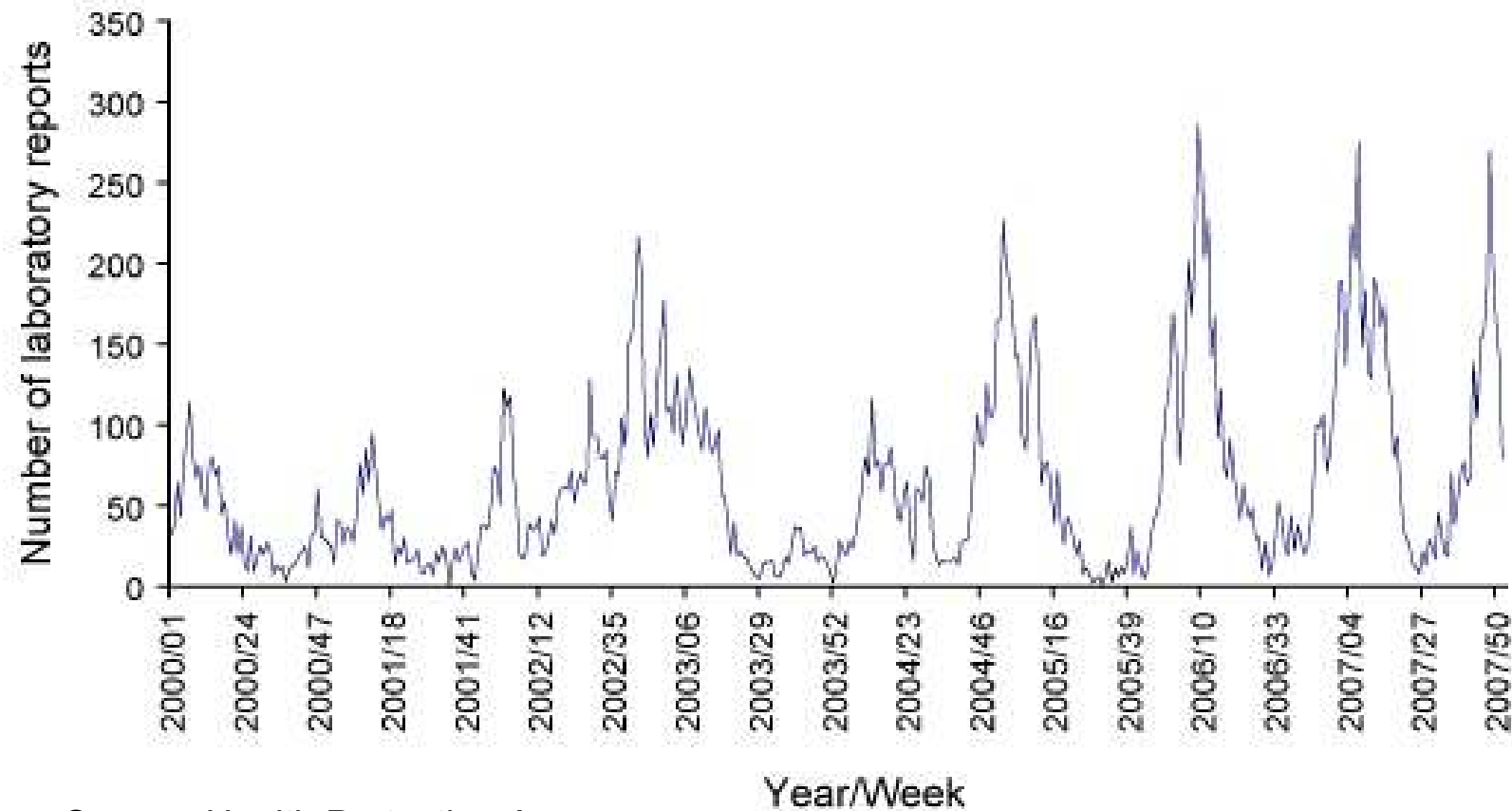
• [Norovirus symptoms](#)

The norovirus season began a month earlier than normal this winter. Cases of the bug increased rapidly, with more than 200,000 people a week now catching the infection, official figures claim.

Norovirus

Norovirus lab reports

Figure Laboratory reports of norovirus 2000-2007 (England and Wales)

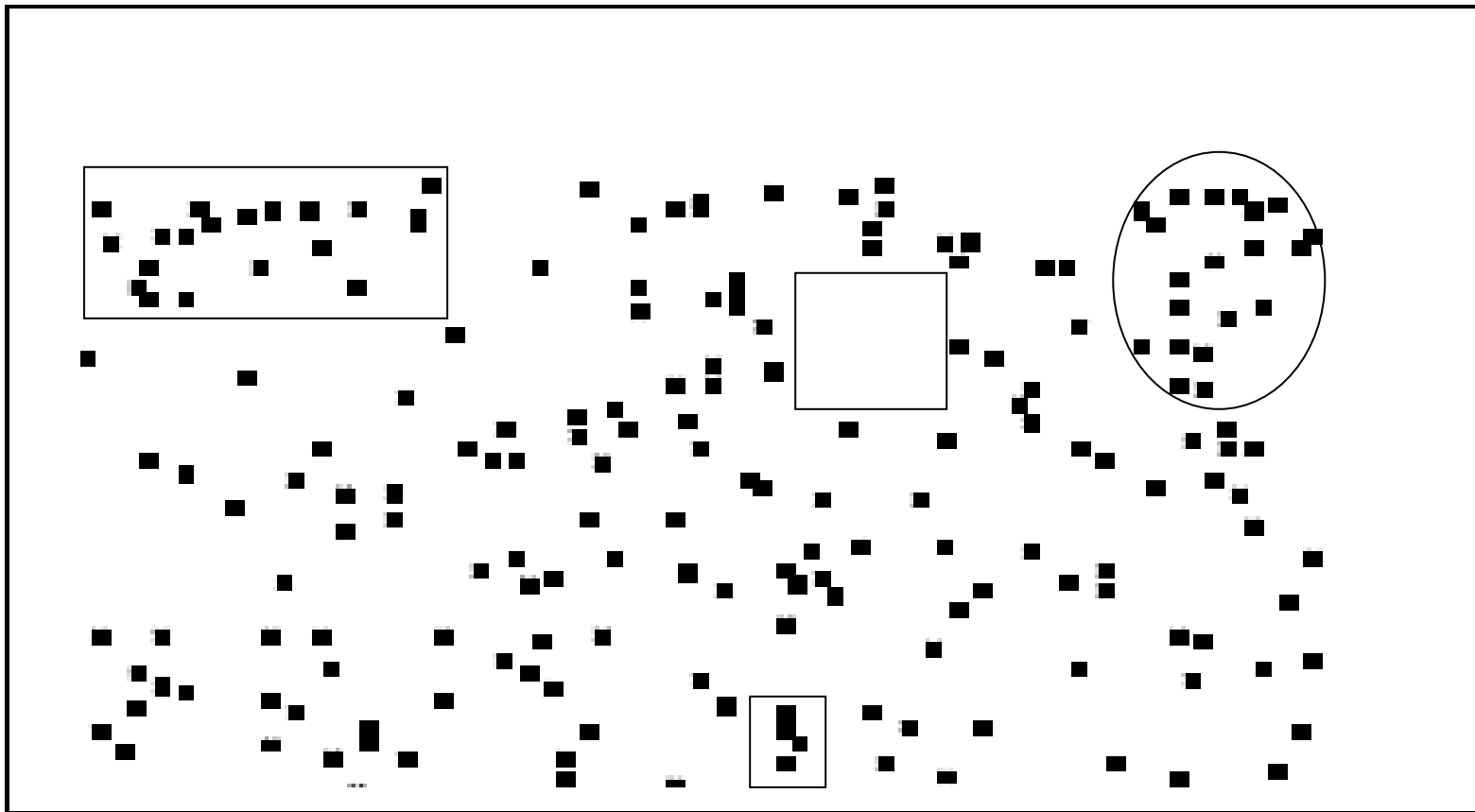


Source: Health Protection Agency

Norovirus confidence intervals

- 1:1500 (1 lab case = 1500 in community).
- 2000 lab cases = 3million in community
- But maybe 1:140
- (=280,000 cases)
- Or maybe 1:17,000
- (=34 million cases)
- Community study lab cases...
- 1

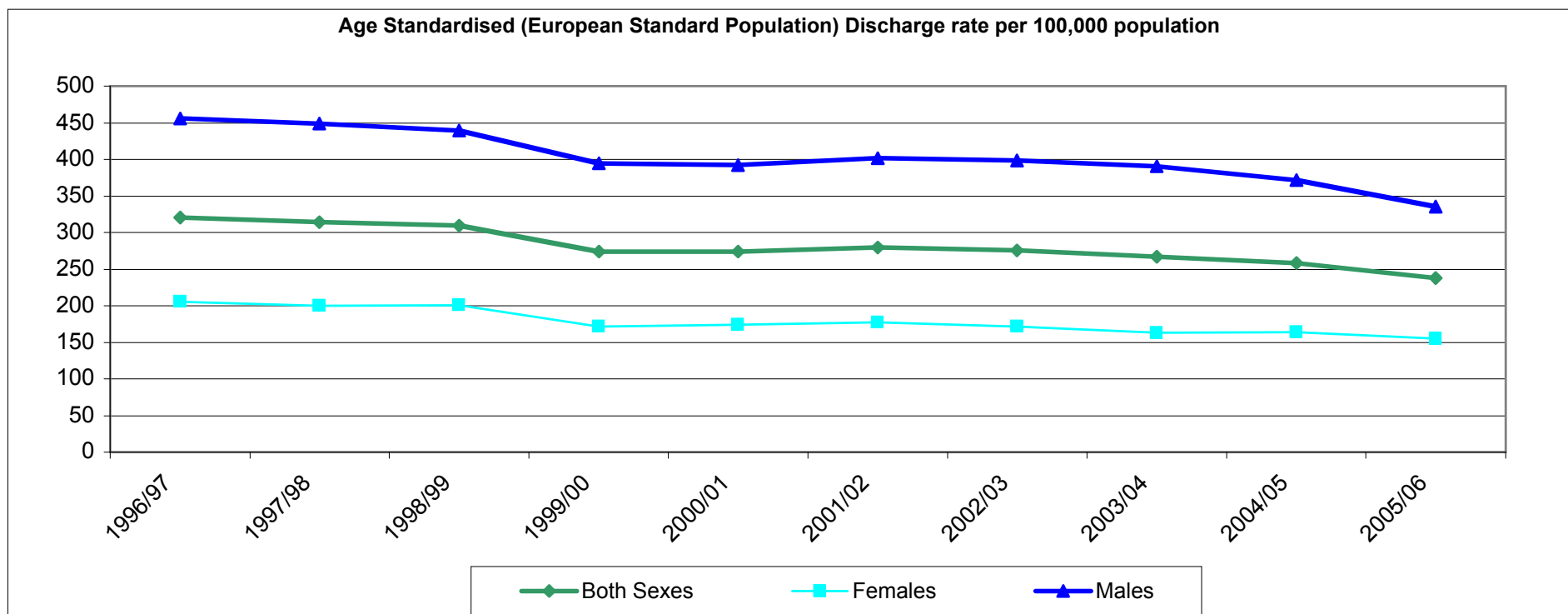
Scattergram generated by random x,y co-ords



Up and down

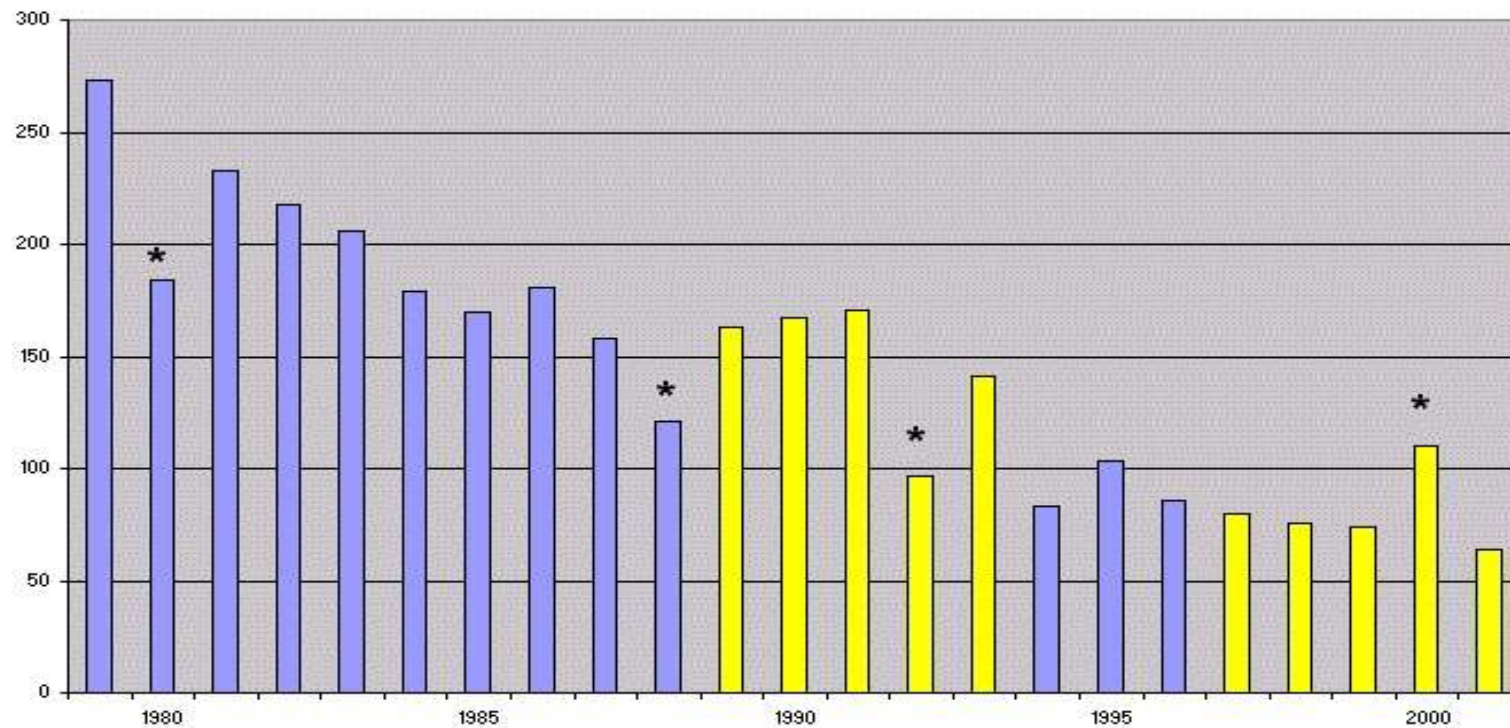


Heart attacks and smoking



Up and down - Helena, Montana

Age Adjusted Mortality Rate for Acute Myocardial Infarction Among Persons Age 35+ Years, Lewis and Clark County, Montana, 1979-2001



Risk

“Save our booty”

21% increase in risk of colorectal cancer for every 50g of bacon daily.

Baseline risk

5 in every 100 get colorectal cancer

21% increase on 5

= 6 in every 100 get colorectal cancer

ie 99 out of 100 unaffected

Which is clearer?

- An increase in risk of colorectal cancer of 21 per cent for every 50g of bacon consumed on a daily basis. Incidence rate approx: 6:100,000.
- 5 in 100 men typically get colorectal cancer. If they all have an extra rasher of bacon every day, about 6 will.

Data

Railway safety

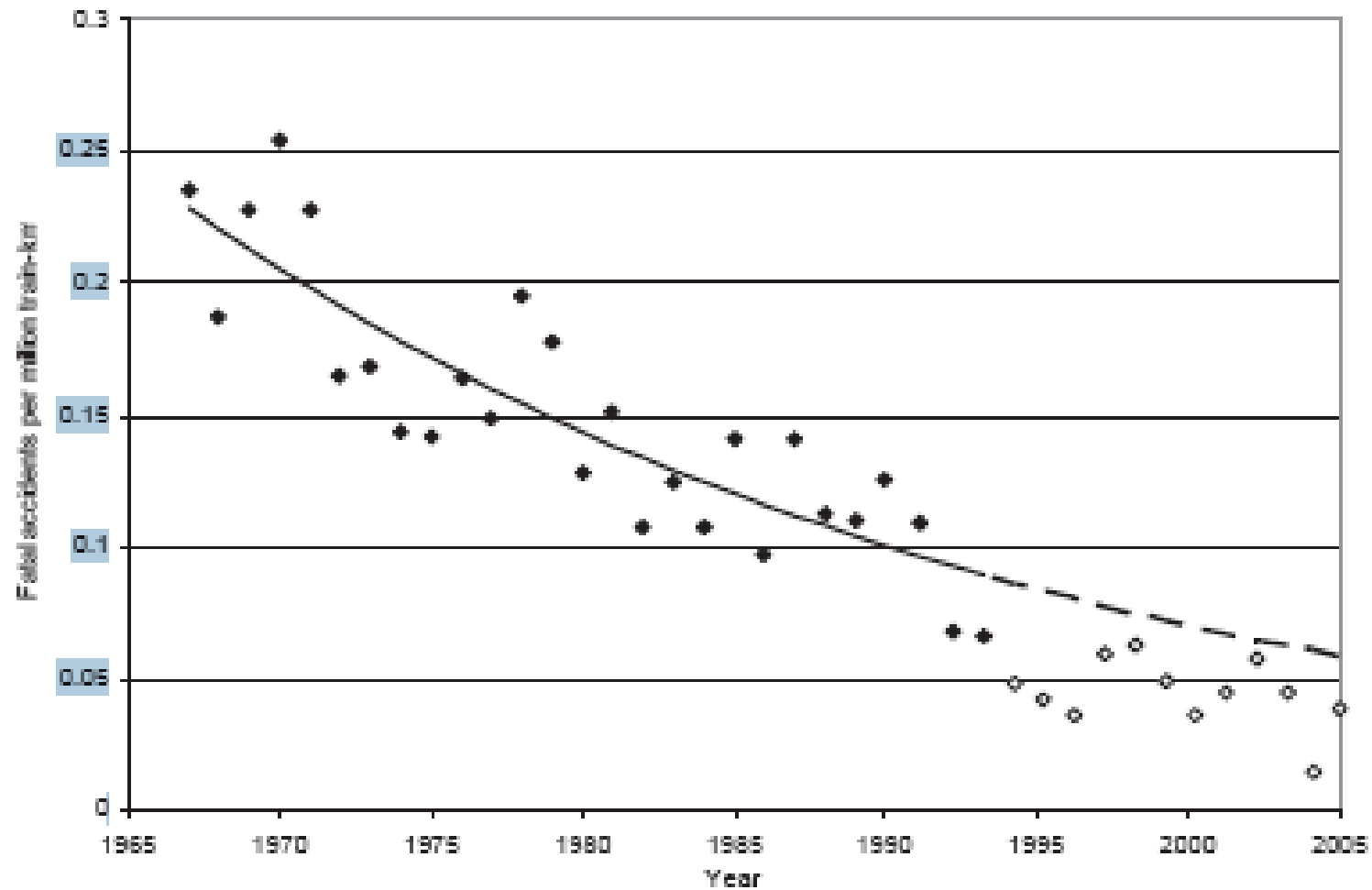


Figure 1. Fatal movement and non-movement accidents per million train-kilometres, 1967-2005

Source: HMI railways inspectorate and Prof Andrew Evans

How many stakeholder pensions already?

- 10%
- 20%
- 30%
- 40%

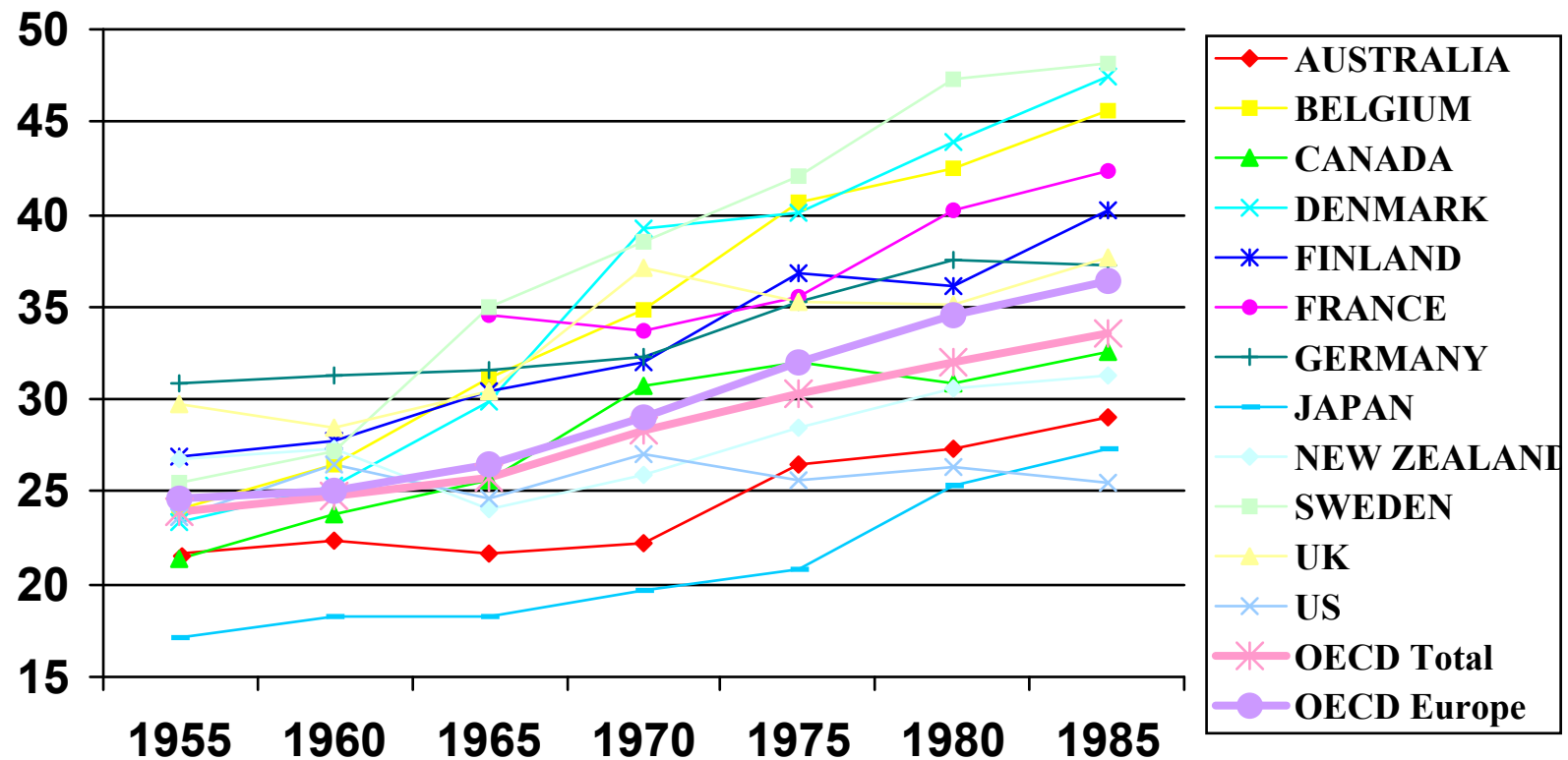
How much must a childless couple earn
(after tax and benefits)
to be in the top 10%?

- £35,000
- £50,000
- £60,000
- £75,000
- £100,000
- £150,000

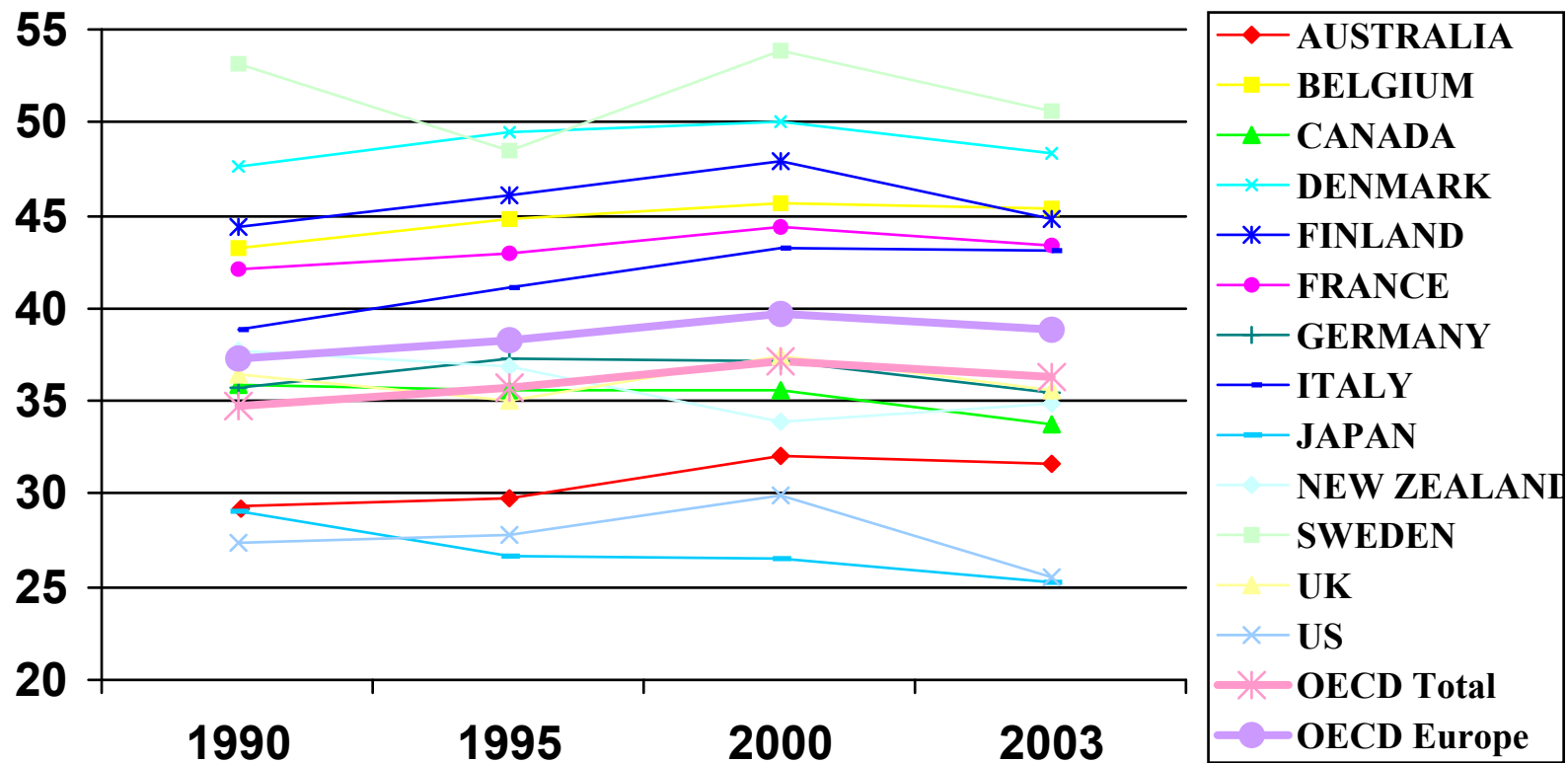
How many gymslip mums?

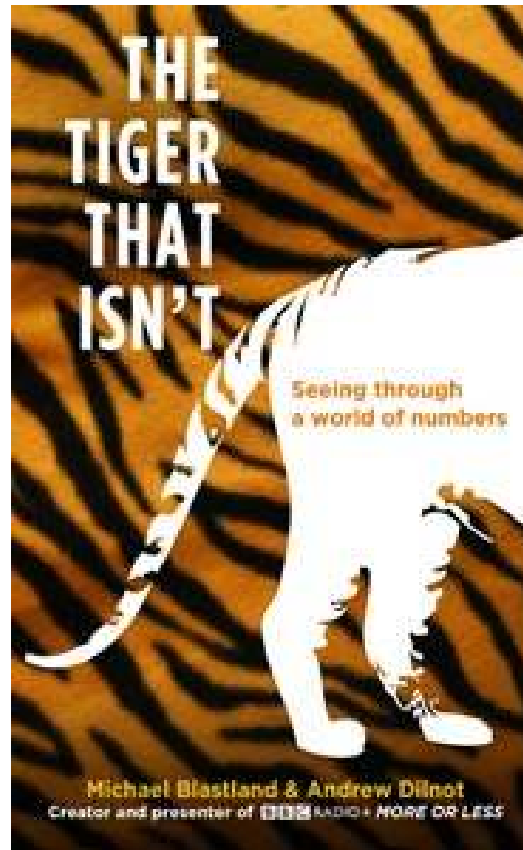
- There are 780,000 single parents on means tested benefits. How many are under 18 (ie how many gym slip mums?)
- 20,000
- 50,000
- 100,000

Total tax revenue as % of GDP



Total tax revenue as % of GDP





“Makes statistics far, far too interesting” - Rory Bremner