



**THE LONDON SCHOOL
OF ECONOMICS AND
POLITICAL SCIENCE**

IN SHORT





Contents

About LSE	2
History of LSE	5
Students and alumni	6
Staff	9
World leaders	10
Teaching	13
Research	14
Engagement	17
International partnerships	18
A changing campus	21
Events	22
Library and IT	25
Students' Union	26
Widening participation	29
Careers Service	30
Language Centre	30
Other forms of study	33
Scholarships and financial support	34
Advice for applicants	34
Connecting with business	36
Finance	38
Governance	39
Ethics Code	39
Social media	39
Contacts	40

About LSE

The London School of Economics and Political Science – LSE – is one of the foremost social science universities in the world.

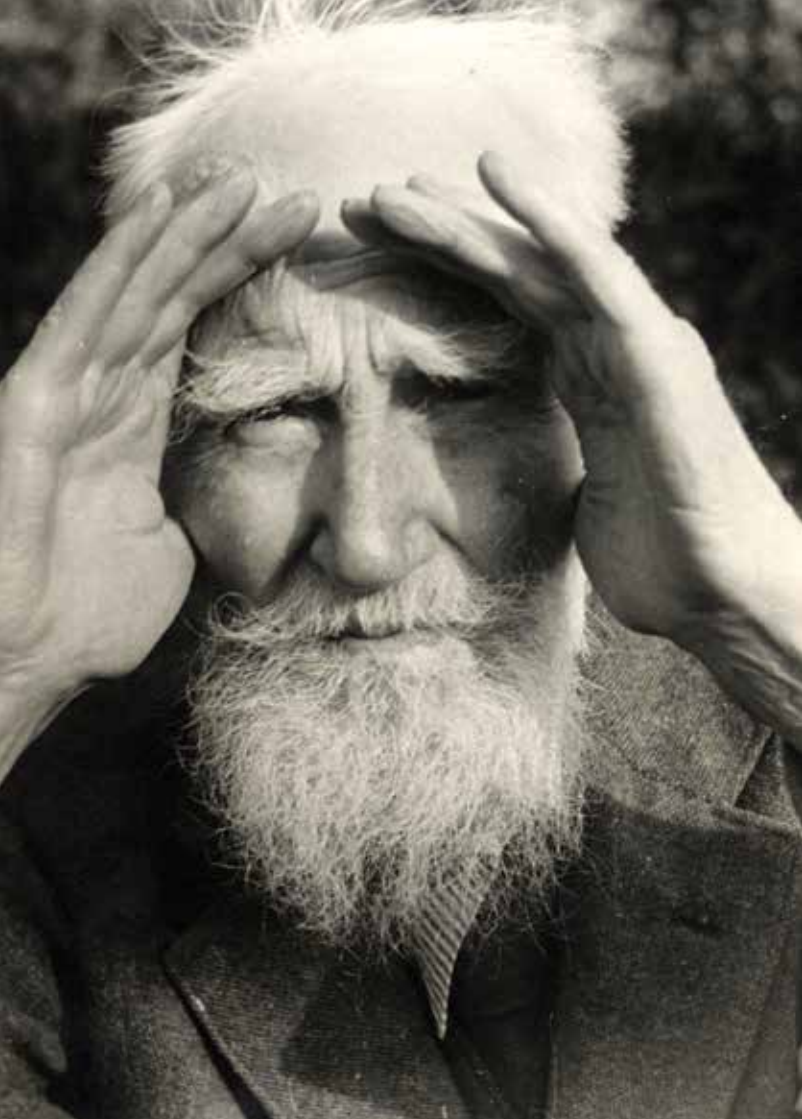
It is a specialist university with an international intake and a global reach. Its research and teaching span the full breadth of the social sciences, from economics, politics and law to sociology, accounting and finance. The last major assessment of UK research strengths found LSE to have the highest percentage of world-leading research of any UK university and its impact on social policy and debate is acknowledged globally.

The School scores highly in global and UK university rankings.

“LSE is a remarkable institution. It is top-ranked, intellectually innovative, and full of brilliant people. Since its foundation the School has been devoted to understanding major social issues and to grasping the course of social change. Its research shapes and leads public debate.”

Professor Craig Calhoun, Director of LSE





History of LSE

The decision to create LSE was made by four leading members of the Fabian Society at a breakfast party in Surrey in August 1894. They were Beatrice and Sidney Webb, Graham Wallas and George Bernard Shaw. Within a year the School was founded, opening its doors in October 1895. In 1906 there were 181 postgraduates in the whole of England and Wales: 69 were at LSE.

The aim of the School was the betterment of society. In 1922 it adopted as its motto the phrase *rerum cognoscere causas* (from Virgil's *Georgics*), which means to know the causes of things. The industrious beaver was chosen as the School's emblem in the same year.

Find out more about LSE's history on our blog and timeline at blogs.lse.ac.uk/lsehistory

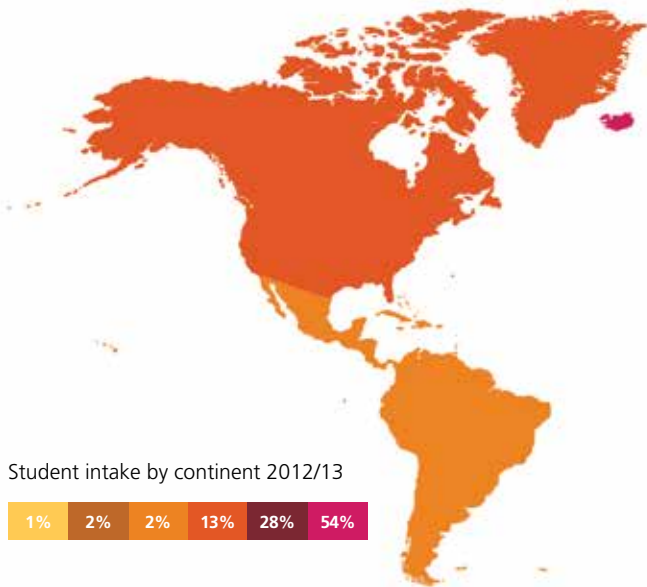
“Sidney Webb had a vision ‘of a centre not only of lectures on special subjects but an association of students who would be directed and supported in doing original work.’”

From the diaries of **Beatrice Webb**

Students and alumni

LSE has an international student body, drawing its students from around 140 countries worldwide. It has a network of over 125,000 alumni in more than 190 countries, with over 80 groups and contact networks and an active Alumni Association.

In 2012/13 the School had around 9,600 full-time students and over 600 part-time students. Of these, 58 per cent were postgraduates. Around two thirds of students came from outside the UK.



“LSE was an obvious choice for me. When you combine the central London location with the diverse mix of students, you find yourself studying in one of the most fascinating environments imaginable.”

Hannah Baker, 3rd year, BSc Accounting and Finance



Join the global debate at LSE



Staff

LSE has a cosmopolitan staff, with about 47 per cent drawn from countries outside the UK. In all, around 1,800 people work full-time for LSE and 1,500 part-time.

LSE staff are at the forefront of their disciplines. They advise governments, public bodies and government inquiries, and are frequently seconded to national and international organisations.

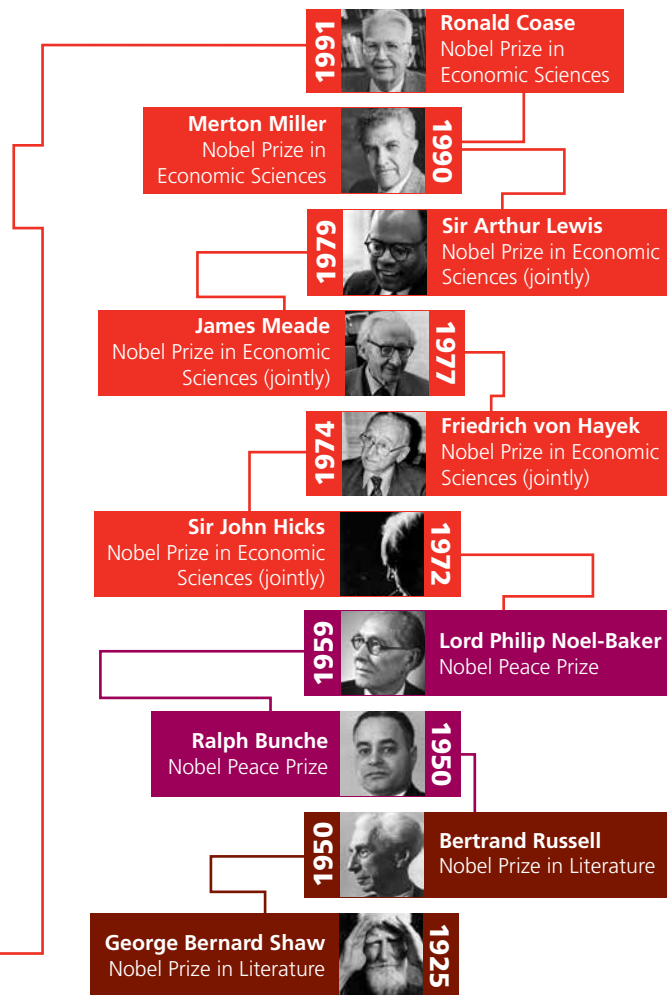
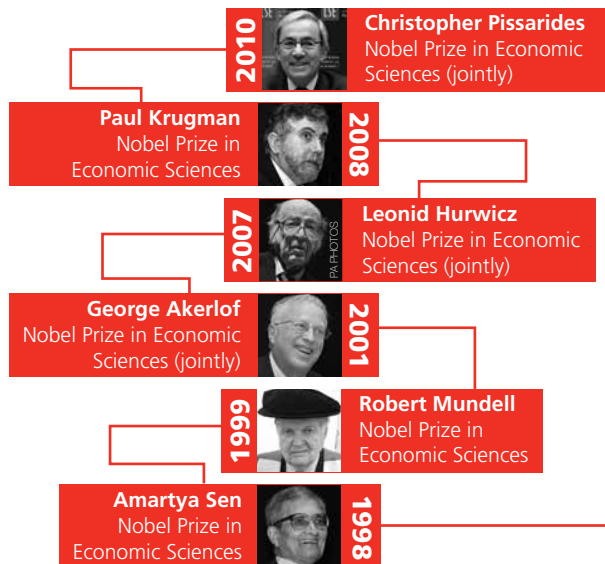
LSE academics are frequently in the news, commenting on major issues of the day. In 2014 these included the Indian elections, the European elections and the rise of UKIP, climate change and mental health.

"The arrival of Professor Craig Calhoun as Director in 2012 prompted one of the biggest recruitment drives in the history of LSE, with over 80 prominent social scientists joining within a year. They came from the world's leading universities, including Harvard, Yale, Cambridge and Oxford. LSE is increasingly self-confident about its position in the global academy. We are outward-facing, engaged with major public policy issues and open to new directions in both teaching and research."

Professor Stuart Corbridge, Provost and Deputy Director

World leaders

In all, 34 past or present heads of state have studied or taught at LSE, including John Atta Mills, Shri KR Narayanan and Romano Prodi. Currently 31 members of the UK House of Commons and 42 peers of the House of Lords have also either taught or studied at LSE. A total of 16 Nobel Prize winners in economics, peace and literature have been either LSE staff or alumni.



Academic departments and institutes

Accounting

Anthropology

Economic History

Economics

European Institute

Finance

Gender Institute

Geography and Environment

Government

International Development

International History

International Relations

Language Centre

Law

Management

Mathematics

Media and Communications

Methodology

Philosophy, Logic and Scientific Method

Public Affairs (IPA)

Sociology

Social Policy

Sociology

Statistics

Social Psychology

Teaching

LSE offers a range of undergraduate and postgraduate courses in the social sciences. Teaching is carried out through academic departments and interdisciplinary institutes, and in partnership with internationally renowned institutions.

One of the many teaching innovations is the now firmly established LSE 100 course. This introduces all first year undergraduates to the fundamental elements of thinking like a social scientist, by exploring some of the great intellectual debates of our time from the perspective of different disciplines.

The School constantly strives to improve teaching, and in addition to lectures and classes, is embracing the use of technology and social media.

“LSE is investing heavily in exciting teaching initiatives and new ways of capturing lectures, which push the boundaries of the social sciences and send students into the world with experience of tackling the big issues of our time. Enjoyment and innovation are at the heart of our approach to teaching and learning.”

Professor Paul Kelly, Pro-Director for Teaching and Learning

Research

From its foundation over a hundred years ago LSE has aimed to be a laboratory of the social sciences, a place where ideas are developed and analysed, evaluated and disseminated around the world.

UK-wide assessments of research strength have confirmed LSE as a world leading research university. There are currently 19 research centres at the School, ranging from large multidisciplinary centres with substantial financial support to smaller centres. These centres lead research in their fields and tackle some of the most pressing issues of our time. Research is also carried out in academic departments and research groups.

In all, LSE has one of the largest concentrations of applied economic, financial and social research anywhere in the world.

“LSE’s multi-disciplinary research, which brings together world leading academics, allows the School to put global issues under the microscope. Its links to governments, policy makers, legislators and think-tanks mean it can take these ideas directly to those seeking to change the world.”

Professor Julia Black, Pro-Director for Research

Research centres

Asia Research Centre

Centre for Analysis of Social Exclusion (CASE)

Centre for the Analysis of Time Series (CATS)

Centre for Climate Change Economics and Policy (CCCEP)

Centre for Economic Performance (CEP)

Centre For Macroeconomics (CFM)

Centre for Philosophy of Natural and Social Sciences (CPNSS)

Centre for the Study of Human Rights

Financial Markets Group (FMG)

The Grantham Research Institute on Climate Change and the Environment (GRI)

IDEAS: International Affairs, Diplomacy and Strategy

International Growth Centre (IGC)

LSE Cities

LSE Health and Social Care

Middle East Centre

Spatial Economics Research Centre (SERC)

Suntory and Toyota International Centres for Economics and Related Disciplines (STICERD)

Systemic Risk Centre (SRC)

What Works Centre for Local Economic Growth



Engagement

Set up to improve society and to “understand the causes of things”, LSE has always put engagement at the heart of its mission.

From its location in the heart of London, the School links to communities across the world, from formal academic partnerships to advisory work with governments and international organisations.

LSE academics inform policy worldwide, shedding expert light on subjects from climate change to measures for a safe, secure internet. LSE's output ranges from the strategic policies of China and India to global energy policy. The full breadth of the social sciences studied at LSE gives its academics rich inter-disciplinary expertise to draw on, helping them understand the global impacts of policies and trends.

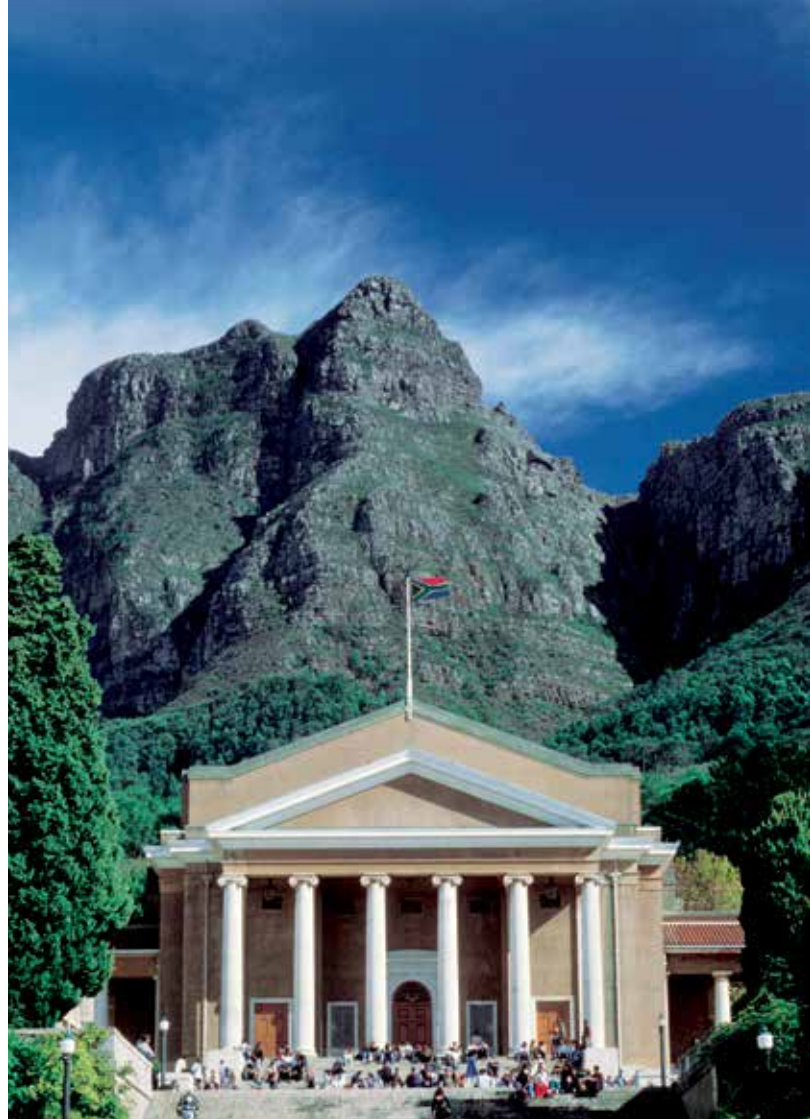
From the London teenagers who attend weekend classes at LSE, the thousands of international students who flock to one of the largest Summer School programmes in Europe and to its daily public events and lectures, LSE engages and shares its research with different and disparate communities.

International partnerships

LSE has established a global network with a small number of high quality universities across the world. With an emphasis on quality rather than quantity, these relationships serve to create strong and valuable links that enable both LSE and its institutional partners to provide world class education to their students and to undertake innovative research, dealing with real world problems.

There are multi-faceted institutional partnerships with Columbia University (New York), Sciences Po (Paris) and Peking University (Beijing). Partnerships are also developing with the University of Cape Town (South Africa) and the National University of Singapore. Collaborative activities include double master's degree programmes and innovative, two-week schools in Beijing (August) and Cape Town (July), as well as faculty and PhD student exchanges.

Right: University of Cape Town





A changing campus

Recent years have seen dramatic changes to the size and quality of LSE's campus, as part of its aim to create a world class estate. Her Majesty The Queen opened the £71m New Academic Building (NAB) in 2008. Following that the Grade II Listed former Land Registry building at 32 Lincoln's Inn Fields was converted into high quality teaching and faculty accommodation and opened in 2013.

The award winning Saw Swee Hock Student Centre houses the Students' Union and other vital student services. The first new building on campus for 40 years, it opened its doors in January 2014. It is only the 17th building in the world to achieve the BREEAM "outstanding" rating for its sustainable design.

Two further new build projects are planned in the next six years which will complete the transformation of the campus.

See lse.ac.uk/estates

"To enthuse and inspire – our aim was to create an exceptional piece of architecture that will play a key role in enhancing the student experience at LSE."

Julian Robinson, Director of Estates, commenting on the Saw Swee Hock Student Centre (pictured left)

Events

LSE has one of the most prestigious public events programmes in the world. World leaders such as Nelson Mandela, Dmitry Medvedev, Bill Clinton, Angela Merkel, David Cameron and Madeleine Albright have all spoken at LSE. Financial figures such as Ben Bernanke, then chair of the US Federal Reserve, and LSE alumnus George Soros have drawn large crowds.

Leaders of business, such as Bill Gates, chair of the Gates Foundation, Steve Ballmer, then chief executive of Microsoft and Sheryl Sandberg, chief operating officer of Facebook, have all visited and spoken on the School's campus.

Nobel laureates including the Dalai Lama, Aung San Suu Kyi, Amartya Sen, Muhammad Yunus and Joseph Stiglitz have all addressed an LSE audience.

The School has a vibrant arts and music programme and holds an annual literary festival.

For information on forthcoming events and for transcripts, podcasts and videos, see lse.ac.uk/events

Clockwise from top left: Michelle Bachelet; Bill Clinton; Kofi Annan; Bill Gates; the Dalai Lama; Ben Bernanke; Nelson Mandela; Aung San Suu Kyi; Fatima Bhutto





Library and IT

The LSE Library, founded in 1896 as the British Library of Political and Economic Science, is the major international library for the social sciences with over 4m printed items, 60,000 online journals and 29,000 electronic books. It has been recognised by the Higher Education Funding Council as one of only five National Research Libraries in England, and carries Designated status as being of outstanding national and international importance, in the scheme administered by Arts Council England. In 2013, the Library took ownership of the Women's Library collection, the oldest and most extensive collection of women's history in Europe.

The Library provides a wide range of services to support teaching and research at the School, including: LSE Research Online; the Digital Library; information skills; and dedicated support staff.

The Information Management and Technology Department supports the use of IT facilities across the School, including desktop and mobile devices, software, digital telephony, and IT and audio-visual technologies in learning spaces, and also provides a comprehensive training programme. There are over 1,000 student PCs on campus, of which half are located in the Library, providing 24-hour access seven days a week for part of the year. There is an extensive wireless network across the whole campus, including The Cloud which enables wireless access for LSE visitors.

Students' Union

The LSE Students' Union (LSESU) is an independent charitable organisation that exists solely to represent and improve the experience of its members – LSE students.

LSESU aims to provide opportunities for students to make the most of their time at LSE and encompasses a huge range of services and support; from campaigning about issues affecting students, to supporting more than 200 student-run societies and sports clubs, running catering facilities, shops and bars, or providing confidential advice, the Students' Union covers just about every area of students' lives beyond their studies.

LSESU is one of the most politically active and democratic students' unions in the country. All students at LSE are automatically members of the Union and have the right to influence the output and focus of LSESU by voting in elections for student representatives, participating in Union General Meetings, providing feedback on its activities and more.

As members of LSESU, students also become members of the National Union of Students (NUS), which campaigns and lobbies on behalf of more than 7m students in the UK.

See www.lsesu.com





Widening participation

LSE has a strong commitment to helping pupils from under-represented backgrounds to access higher education. The School runs 14 widening participation (WP) and access initiatives which aim to raise the aspirations and attainment of state school and college students. LSE works with over 300 schools and FE colleges annually.

All activities are open to pupils from state schools and colleges across the Greater London area. Students from Year 6 through to Year 13 can take part in a variety of different projects, including one day events, week-long Easter/Summer Schools and programmes which span year 12 and 13 A level courses. In 2014 LSE launched a new Law programme for Year 12 students supported by the Alison Wetherfield Foundation. All of our projects are delivered by LSE's Widening Participation team, with the support of LSE academics, over 200 current LSE students and generous external funding from individual donors and organisations. For more information, see lse.ac.uk/wideningParticipation

Careers Service

LSE Careers provides a varied and comprehensive careers guidance and employment service for LSE students and recent alumni. This includes daily one to one advice from LSE careers consultants, seminars, fairs, conferences and presentations run by employers, an online vacancy portal providing hundreds of opportunities for students and alumni and extensive careers resources available online and in the resource area. For further information see

lse.ac.uk/careers

Language Centre

The LSE Language Centre specialises in creating courses targeted to the needs of students and practitioners in the field of social science and related areas. In addition to Linguistics, Literature and modern foreign languages such as French, German, Russian, Spanish and Mandarin Chinese, the centre specialises in teaching English for specific purposes and runs a range of professional and executive programmes. For further information, see lse.ac.uk/language





Other forms of study

Students at institutions overseas are offered the opportunity to spend a year of undergraduate study at the School through LSE's study abroad programme, the General Course. Applicants should have completed two years of university level study with a GPA of 3.3/4.0 or above. For more details, email gc@lse.ac.uk or visit lse.ac.uk/generalCourse

LSE contributes academic direction and support to a range of University of London degrees and diplomas that students can study wherever they are currently living. For more details, email enquiries@london.ac.uk, or visit londoninternational.ac.uk. Alternatively contact the LSE Office for University of London International Programmes on uolip@lse.ac.uk, or visit lse.ac.uk/study/UOLIP

The Summer School programme, held at LSE between July and August, offers courses taught and examined to LSE standards and accepted for credit by numerous universities worldwide. Email summer.school@lse.ac.uk or visit lse.ac.uk/summerSchool. The programme includes the Methods Summer Programme lse.ac.uk/methods and the Executive Summer School lse.ac.uk/ess

LSE also runs innovative, two-week summer programmes in Beijing with Peking University (August) and in Cape Town with the University of Cape Town (July). See lse.ac.uk/LSEPKUsummerschool or lse.ac.uk/LSEUCTjulyschool

Scholarships and financial support

LSE awards around £17m a year in student support, thanks in part to help from alumni, corporations, foundations and friends all over the world. Many other students secure external funding, and many supplement their income through part-time work at LSE.

LSE support is available to students at all levels, and helps to keep an LSE education within the reach of talented students regardless of means. At undergraduate and taught postgraduate levels funding is needs based, with additional named awards supporting those on particular programmes or from specific parts of the world. The School offers a generous PhD Studentship scheme and Research Council awards to those applying for doctoral programmes, and selection for these funds is based on academic merit and research potential. See

lse.ac.uk/financialSupport

Advice for applicants

Prospective applicants are encouraged to learn more about LSE by attending one of the School's Undergraduate Open Days or on-campus events; by meeting LSE staff in over 30 countries worldwide; by emailing the Student Recruitment Office or an alumnus; by viewing the videos on the LSE website, or by reading the printed and online prospectuses. For more information, see lse.ac.uk/study



Connecting with business

Business Partnerships, part of the Research Division at LSE, is responsible for developing, designing and managing long-term, sustainable research collaborations with businesses using the expertise of leading academics within LSE. It provides an entry point for industry into the School and can liaise with the relevant academic departments to discuss research proposals and corporate engagement opportunities. Email businesspartnerships@lse.ac.uk.

The School offers a gateway to a range of LSE expertise through a professional consultancy service, LSE Consulting. It is run by experienced project managers who specialise in matching the skills and talents of LSE's academic consultants with the needs of clients around the world. Email enterprise@lse.ac.uk or see lse.ac.uk/consulting

In addition, LSE offers a range of specialist teaching programmes:

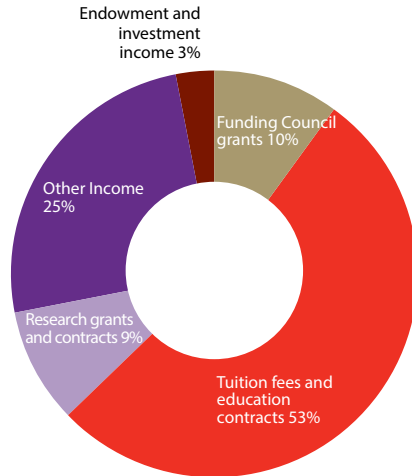
- LSE Custom Programmes designs and delivers customised programmes for individuals and groups of executives in organisations around the world. See lse.ac.uk/customProgrammes
- The TRIUM executive MBA is offered in partnership with the NYU Stern School of Business and HEC, School of Management, Paris. See triumemba.org
- Executive Summer School offers intensive one week open enrolment courses for global professionals. See lse.ac.uk/ess
- Tailored language tuition is offered for individuals or small groups. See lse.ac.uk/language



Finance

LSE had an annual income of £263.2m for the financial year ending 31 July 2013.

2012/13 income



Governance

The governing body is the Council. The principal academic body is the Academic Board, chaired by the Director. See lse.ac.uk/intranet/LSEServices/governanceAndCommittees

Ethics Code

The Ethics Code is a set of six core principles underpinning life at LSE. All staff, students and governors are expected to act in accordance with these principles. The Code is accompanied by a set of Ethical Guidelines that aim to show how each principle should apply in practice. See lse.ac.uk/ethicsCode or email ethics@lse.ac.uk for further information.

Social media

LSE has a strong social media presence. Visit lse.ac.uk/socialMedia to find out more.

Contacts

Alumni Relations Office

Tel: +44 (0)20 7955 7361

Email: alumni@lse.ac.uk

lse.ac.uk/alumni

Conference and Events Office

To book rooms at LSE:

Tel: +44 (0)20 7955 7087

Email: event.services@lse.ac.uk

lse.ac.uk/conference

[AndEventsOffice](http://lse.ac.uk/AndEventsOffice)

For information on public lectures:

Tel: +44 (0)20 7955 6043

Email: events@lse.ac.uk

lse.ac.uk/events

LSE Consulting and

LSE Custom Programmes

Tel: +44 (0)20 7955 7128

Email: enterprise@lse.ac.uk

lse.ac.uk/enterprise

Business Partnerships

For corporate research
collaborations:

Tel: +44 (0)20 7106 1148

Email: businesspartnerships@lse.ac.uk

Library

Tel: +44 (0)20 7955 7229

Email: library.enquiries@lse.ac.uk

lse.ac.uk/library

Press Office

Tel: +44 (0)20 7955 7060

Email: pressoffice@lse.ac.uk

lse.ac.uk/press

Research Division

Tel: +44 (0)20 7106 1202

Email: rescon@lse.ac.uk

lse.ac.uk/intranet/research

[AndDevelopment](http://lse.ac.uk/AndDevelopment)

Student Recruitment Office

For information about applying to
and studying at LSE:

Tel: +44 (0)20 7955 6613

Email: stu.rec@lse.ac.uk

lse.ac.uk/study

This information can be made available in alternative formats,
on request. Please contact: Hayley Reed, Communications,
tel: +44 (0)20 7852 3602, email: h.reed@lse.ac.uk

lse.ac.uk



Registered address: The London School of Economics and Political Science, Houghton Street, London WC2A 2AE

The London School of Economics and Political Science holds the dual status of an exempt charity under Section 2 of the Charities Act 1993 (as a constituent part of the University of London), and a company limited by guarantee under the Companies Act 1985 (Registration no. 70527).

Freedom of thought and expression is essential to the pursuit, advancement and dissemination of knowledge. LSE seeks to ensure that intellectual freedom and freedom of expression within the law is secured for all our members and those we invite to the School.

The School seeks to ensure that people are treated equitably, regardless of age, disability, race, nationality, ethnic or national origin, gender, religion, sexual orientation or personal circumstances. Equality and diversity are integral to the School's priorities and objectives. We will support inter-faith and inter-cultural dialogue and understanding and engage all students in playing a full and active role in wider engagement with society.

