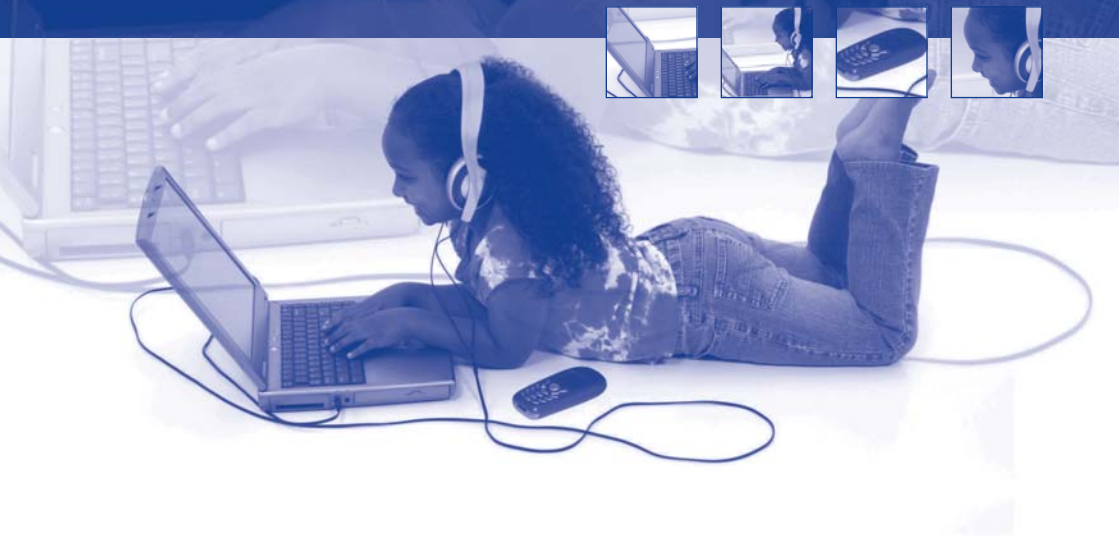


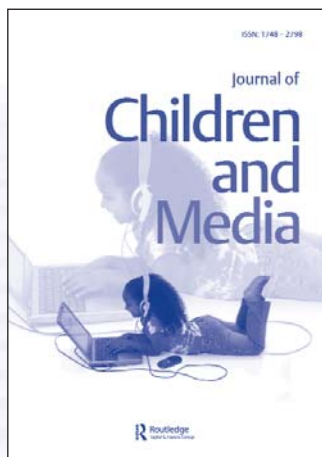
Journal of  
**Children  
and  
Media**



**Routledge**  
Taylor & Francis Group

To view an online sample copy go to:  
[www.tandf.co.uk/journals/jocam](http://www.tandf.co.uk/journals/jocam)

# Journal of Children and Media



**Journal of Children and Media** is an interdisciplinary and multi-method peer-reviewed publication that provides a space for discussion by scholars and professionals from around the world and across theoretical and empirical traditions who are engaged in the study of media in the lives of children and adolescents. It is a unique intellectual forum for the exchange of information about all forms and contents of media in regards to all aspects of children's lives, and especially in three complementary realms: Children as consumers of media, representations of children in the media, and media organizations and productions for children as well as by them. It is committed to the facilitation of international dialogue among researchers and professionals, through discussion of interaction between children and media in local, national, and global contexts; concern for diversity issues; a critical and empirical inquiry informed by a variety of theoretical and empirical approaches; and dedication to ensuring the social relevance of the academic knowledge it produces to the cultural, political, and personal welfare of children around the world.

ONLINE COLLECTION

## Media, Cultural and Communications Studies Collection

*Journal of Children and Media* is included in the Media, Cultural and Communication Studies Collection, which brings together all online journal content from 1997 published by Routledge. Tell your librarian today!

For more information on our library packages, visit:

[www.informaworld.com/librarians\\_pricinginfo\\_journals](http://www.informaworld.com/librarians_pricinginfo_journals)



## SPECIAL ISSUE

Volume 3 Issue 4, November 2009

### Comparative issues and findings for children's internet use in Europe

With 75% of European children now using the internet, the EU Kids Online network has been comparing recent research in many countries to understand the emerging array of risks and opportunities for children.

Guest editors: **Sonia Livingstone** and **Panayiota Tsatsou**

#### Articles include:

A Shared Responsibility: Similarities and Differences in the Factors that Shape Online Risk Assessment for Children in Europe

**Joke Bauwens, Bojana Lobe, Katia Segers** and **Liza Tsaliki**

Online Content Creation Practices of Estonian Schoolchildren in a Comparative Perspective

**Veronika Kalmus, Pille Pruulmann-Vengerfeldt, Pille Runnel** and **Andra Siibak**

Children's Experiences of Cyberbullying when Using Different Technological Platforms

**Petter Bae Brandtzæg, Elisabeth Staksrud, Ingunn Hagen** and **Thomas Wold**

Gender Differences in Children's Internet Use: Key findings from Europe

**Helen McQuillan** and **Brian O'Neill**

A Comparative Analysis of European Press Coverage of Children and the Internet

**Leslie Haddon** and **Gitte Stald**

To sign up for tables of contents, new publications and citation alerting services visit: [www.informaworld.com/alerting](http://www.informaworld.com/alerting)

## Submissions

The editor welcomes original article-contributions that have not been published elsewhere and are not being considered for another journal.

Manuscripts must conform to the American Psychological Association (APA) style with a recommended length of 8,000 words, including notes and references.

Submissions should be delivered as an e-mail attachment to Dafna Lemish, Editor at: [lemish@post.tau.ac.il](mailto:lemish@post.tau.ac.il). The editor also invites original submissions to a 'Review and Commentary' section, which is a regular feature of the journal. Contributions to this section are to be short pieces (of up to 2,000 words), and may include book reviews, suggestions for new directions in theory and research, notes on work-in-progress, commentary on developments within the field of children and media, responses to past journal articles, contributions to pedagogy and informal education practices, commentary on media production for children and media literacy programs, and reflections on ways to bridge the concerns of academia and activism. Submissions should be delivered as an e-mail attachment to J. Alison Bryant, Review and Commentary Editor, at: [alison.bryant@nick.com](mailto:alison.bryant@nick.com).

All articles in the main section of the journal have undergone blind peer review.

## EDITORIAL BOARD

### EDITOR

**Dafna Lemish**, *Tel Aviv University, Israel*

### REVIEW AND COMMENTARY EDITOR

**J. Alison Bryant**, *Senior Research Director, Nickelodeon, USA*

### EDITORIAL BOARD

**Daniel Anderson**, *University of Massachusetts, USA*

**Stephen Aufenanger**, *University of Mainz, Germany*

**David Buckingham**, *Institute of Education, University of London, UK*

**Cynthia Carter**, *Cardiff University, UK*

**Charlotte Cole**, *Sesame Workshop, New York, USA*

**Stephanie Hemelryk Donald**, *University of Technology, Sydney, Australia*

**Kirsten Drotner**, *University of Southern Denmark, Odense, Denmark*

**Alexander Fedorov**, *Taganrog State Pedagogical Institute, Taganrog, Russia*

**Cecilia von Feilitzen**, *Södertörn University College, Sweden*

**Shalom Fisch**, *MediaKidz Research & Consulting, NJ, USA*

**Maya Götz**, *IZI Bavarian Broadcasting Corporation, Germany*

**Uwe Hasebrink**, *Hans-Bredow Institute, Germany*

**Amy Jordan**, *University of Pennsylvania, USA*

**Dale Kunkel**, *University of Arizona, USA*

**Sonia Livingstone**, *London School of Economics and Political Science, UK*

**Sharon R. Mazzarella**, *James Madison University, USA*

**Máire Messenger Davies**, *University of Ulster at Coleraine, Northern Ireland*

**Roxana Morduchowitz**, *National Ministry of Education, Argentina*

**Amy Nathanson**, *Ohio State University, USA*

**Dominique Pasquier**, *The School for Higher Studies in Social Sciences, Paris, France*

**Norma Pecora**, *Ohio University, Athens, USA*

**Jeanne Prinsloo**, *Rhodes University, South Africa*

**Robyn Quin**, *Curtin University of Technology, Perth, Australia*

**Rivka Ribak**, *Haifa University, Israel*

**Keith Roe**, *Catholic University of Leuven, Belgium*

**Ellen Seiter**, *University of Southern California, USA*

**Stacy L. Smith**, *University of Southern California, USA*

**Victor C. Strasburger**, *University of New Mexico, USA*

**Chava E. Tidhar**, *Midot Research & Consulting, Israel*

**Patti Valkenburg**, *University of Amsterdam, The Netherlands*

**Ron Warren**, *University of Arkansas, USA*

**Ellen Wartella**, *University of California, Riverside, USA*

**Barbara J. Wilson**, *University of Illinois at Urbana-Champaign, USA*

## Routledge Online Services

### Alerting Services

To receive the table of contents for this publication visit the journal homepage at:

[www.tandf.co.uk/journals/jocam](http://www.tandf.co.uk/journals/jocam)

To sign up for other tables of contents, new publications and citation alerting services visit:

[www.informaworld.com/alerting](http://www.informaworld.com/alerting)

### Online Access

Online access is included with a print institutional subscription to the journal or alternatively is available as an online only option. For further information connect to: [www.tandf.co.uk/journals/online.asp](http://www.tandf.co.uk/journals/online.asp)

### Online Sample Copies

A fully searchable sample copy of this journal is available by visiting: [www.tandf.co.uk/journals/jocam](http://www.tandf.co.uk/journals/jocam)

### Librarians' Area

Visit our web resource for librarians and information professionals at: [www.tandf.co.uk/libsite](http://www.tandf.co.uk/libsite)



Register your email address at:

[www.tandf.co.uk/journals/eupdates.asp](http://www.tandf.co.uk/journals/eupdates.asp) to receive information on books, journals and other news within your areas of interest.



An international active reference linking service. Visit: [www.crossref.org](http://www.crossref.org) for more information.



# Order Form

Please enter my subscription to: **Journal of Children and Media**

Volume 3, 2009, 4 issues per year, Print ISSN 1748-2798; Online ISSN 1748-2801

**Institutional Rate** (print and online access)  US\$394  £238  €315

**Institutional Rate** (online only)  US\$374  £226  €299

**Personal Rate** (print only)  US\$93  £56  €74

**Please note: personal rate subscribers must pay by personal cheque or credit card.**

Subscription rates include postage/air speeded delivery.

£ Sterling rates apply to orders from the UK and the Republic of Ireland.

Euro rates apply to orders from the rest of Europe.

US\$ rates apply to orders from all other parts of the world.

To view an online sample copy of **Journal of Children and Media**, please visit the journal website at: [www.tandf.co.uk/journals/jocam](http://www.tandf.co.uk/journals/jocam)

## PLEASE SEND MY JOURNALS TO:

NAME (BLOCK CAPITALS) \_\_\_\_\_

DEPARTMENT \_\_\_\_\_

INSTITUTION/COMPANY \_\_\_\_\_

STREET \_\_\_\_\_

TOWN \_\_\_\_\_

STATE/COUNTRY \_\_\_\_\_

COUNTRY \_\_\_\_\_

ZIP/POST CODE \_\_\_\_\_

TELEPHONE \_\_\_\_\_

EMAIL \_\_\_\_\_

Register your email address at [www.tandf.co.uk/journals/eupdates.asp](http://www.tandf.co.uk/journals/eupdates.asp) to receive information on books, journals and other news within your areas of interest.

## Methods of Payment

**Payment enclosed.** Cheques or bank drafts should be made payable to **Informa UK Limited** and be drawn on a UK or US bank.

**Please charge**  Visa  Mastercard  Eurocard  American Express (AMEX - US\$/£ only)  Switch/Delta/Maestro

Card Number \_\_\_\_\_ Expiry Date \_\_\_\_\_

Start Date (Switch/Delta/Maestro users only) \_\_\_\_\_ Issue No. (Switch/Delta/Maestro users only) \_\_\_\_\_

Security Code (Last 3 digits found on reverse of card) \_\_\_\_\_

Signature \_\_\_\_\_ Date \_\_\_\_\_/\_\_\_\_\_/\_\_\_\_\_

### INSTITUTIONAL SUBSCRIBERS

Value Added Tax is applicable for institutional subscriptions. Subscribers who take both print and online copies of their journals who are not registered for VAT will need to add VAT to their payments.

**Please supply your VAT registration number to avoid these charges.**

Subscribers who are registered for VAT in the EU are urged to supply their full VAT registration number online at [www.tandf.co.uk/journals/euvat.asp](http://www.tandf.co.uk/journals/euvat.asp)

VAT Registration Number

Payment has been made by bank transfer to one of the following accounts (please indicate):

- UK** - National Westminster Bank Plc, 25 High Street, Colchester, Essex, CO1 1DG, UK • Account Name: Informa UK Ltd. Account No: 01825550 • Sort Code: 60-06-06 • Swift Code: NWBKGB2L • IBAN: GB25NWBK60060601825550
- USA** - Bank of America, 100 33rd Street West, New York, 10001 NY, USA • Account Name: Informa UK Ltd. Account No: 2753109322 • ABA No For Wires: 026009593 • ABA No For ACH: 021000322 • Swift Code: BOFAUS3N
- Europe** - National Westminster Bank Plc, 25 High Street, Colchester, Essex, CO1 1DG, UK • Account Name: Informa UK Ltd. Account No: 06880185 • Sort Code: 60-72-11 • Swift Code: NWBKGB2L • IBAN: GB08NWBK60721106880185

Customer Number
Promotional code
Journal Code <b>RCHM 9</b>



**Please complete in full the details on the Order Form and return to:**

**Routledge Customer Services, T&F Informa UK Ltd**, Sheepen Place, Colchester, Essex, CO3 3LP, UK.  
Tel: +44 (0)20 7017 5544 Fax: +44 (0)20 7017 5198 Email: [subscriptions@tandf.co.uk](mailto:subscriptions@tandf.co.uk)

OR TO

**Routledge Customer Services, Taylor & Francis Inc**, 325 Chestnut Street, 8th Floor, Philadelphia, PA 19106, USA.  
Tel: +1 800 354 1420 (toll-free calls from within the US) or +1 215 625 8900 (calls from overseas)  
Fax: +1 215 625 2940 Email: [customerservice@taylorandfrancis.com](mailto:customerservice@taylorandfrancis.com)

OR TO

**Routledge Customer Services, Taylor & Francis Asia Pacific**, 240 MacPherson Road, #08-01 Pines Industrial Building, Singapore 348574.  
Tel: +65 6741 5166 Fax: +65 6742 9356 Email: [info@tandf.com.sg](mailto:info@tandf.com.sg)

**ONLINE: [www.tandf.co.uk/journals](http://www.tandf.co.uk/journals)**

**OR HAND THE ORDER FORM TO YOUR LIBRARIAN WITH A RECOMMENDATION TO SUBSCRIBE**

The personal details provided by you will be held on a database and may be shared with companies in the Informa Group in the UK and internationally. Sometimes your details may be obtained from or shared with external companies for marketing purposes. If you do not wish your details to be used for this purpose or wish your name to be removed from the database, please contact the Database Manager at: Informa UK Ltd, Informa House, 30-32 Mortimer Street, London W1W 7RE, UK. Tel: +44 (0)20 7017 4555, Fax: +44 (0)20 7017 4743, Email: [database@informa.com](mailto:database@informa.com)