



Digital Business Ecosystem

Contract n° 507953

WP 24: DBE Implementation

Del 24.2: Final version of the ServENT



Information Society
Technologies

Project funded by the European
Community under the "Information
Society Technology" Programme

Contract Number: 507953
Project Acronym: DBE
Title: Digital Business Ecosystem

Deliverable N°: 24.2
Due date: 31/10/2006
Delivery Date: 19/02/2007

Short Description:

This deliverable describes the DBE Servent, how it works, how to obtain it, and points to additional information sources that explain how to make the most of the DBE Servent, which lie outside the scope of this document.

Partners owning: SUN

Partners contributed: Computing Group

Made available to: PUBLIC

VERSIONING

VERSION	DATE	AUTHOR, ORGANISATION
1.0	19/02/2007	JUANJO APARICIO, SUN MICROSYSTEMS

Quality check

1st Internal Reviewer: Computing Group

2nd Internal Reviewer:

3rd Internal Reviewer:

Table of Contents

1.Introduction.....	5
2.Where to download.....	6
3.Running the installer.....	8
4.Bibliography.....	16

1. Introduction

The DBE has produced a set of software modules with the purpose of helping SMEs interact among themselves. One of these pieces is the DBE Studio, where services ready to be used in the DBE can be created. Another of these pieces is the Evolutionary Environment, which monitors the service execution activity and provides suggestions for better business interactions.

The DBE Studio creates services that are then deployed on the DBE Execution Environment so these services can be run.

The Evolutionary Environment is itself a set of services that run in the DBE Execution Environment, so it can keep track of the services that are called.

The services “live” in the Execution Environment. The Execution Environment is formed by the union of all the instances of the DBE Servent, plus the core services that come with it.

The DBE Servent is the piece of software that allows service providers and service consumers to join the DBE.

Service providers are the parties (SMEs) that develop services that are related to their main business activities. They make these services available to the DBE by deploying them onto the DBE Servent.

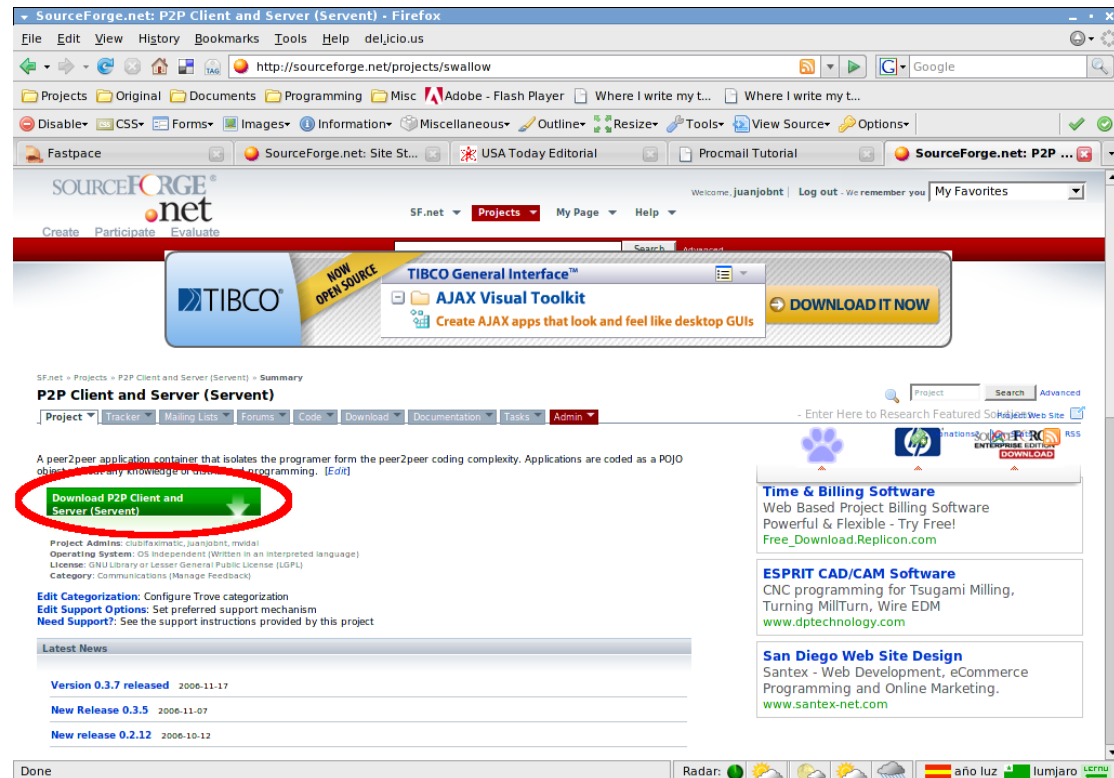
Service consumers are individuals and SMEs that invoke one or more of the already deployed services in the DBE network. They do so by interacting with their installation of the DBE Servent.

The DBE Servent takes care of routing service requests from the service consumers to the service providers. When the request gets to the service instance, it runs within the environment provided by the DBE Servent, where the service has the opportunity to interact with pre-existing back-ends, such as databases and legacy servers.

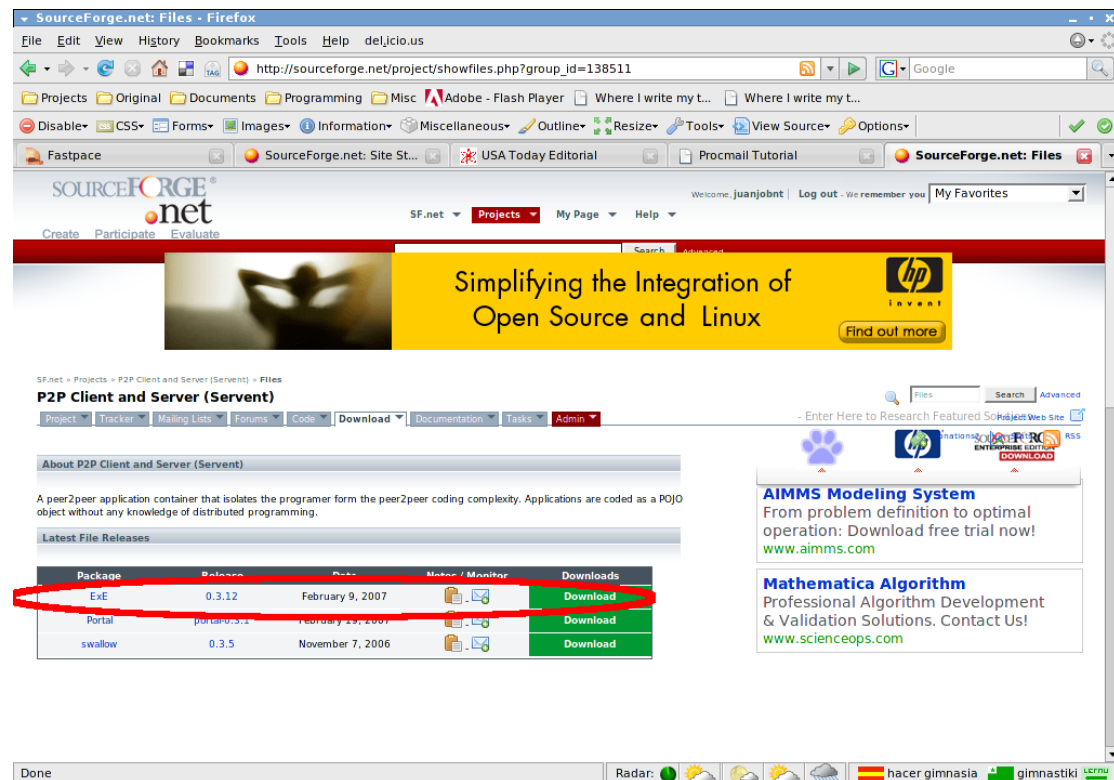
When the service invocation finishes, the DBE Servent takes the responses back to the Servent where they initiated on behalf of the service consumer, which, in turn, gives the responses back to the consumer application.

2. Where to download

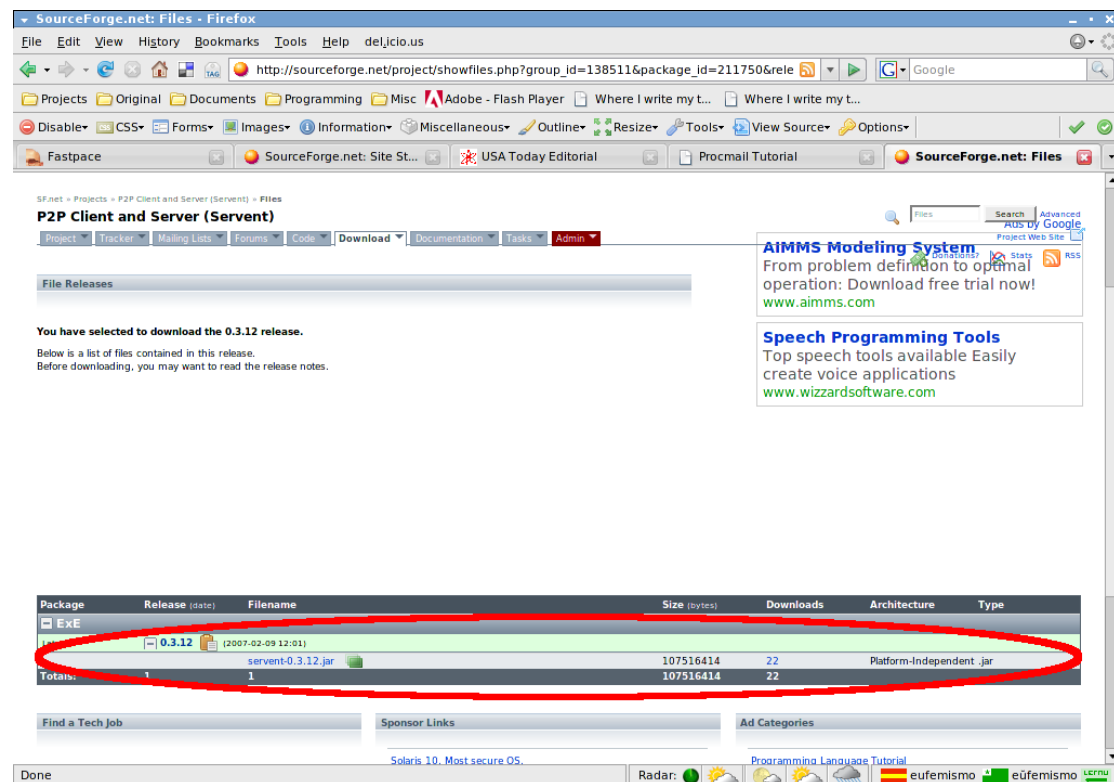
The DBE Servent can be downloaded from its sourceforge.net site[sf.net]. The site has the url <http://sourceforge.net/projects/swallow>, and there you can find the download link:



Following that link will lead you to the file releases, where you must choose the latest version available:



This link will lead you to the file selection page, where only one file, the installer, is available:



Clicking on the link will download the installer.

3. Running the installer

The downloaded file is a self-installer. You only need the Java Developers Kit to run it. You can do so by specifying the command line:

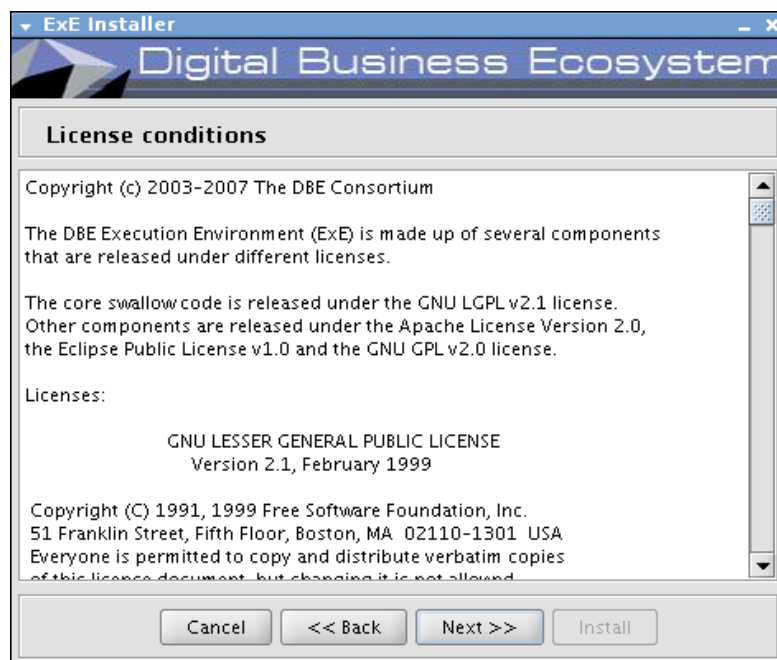
```
java -jar servent-0.3.12.jar
```

(assuming that the version you downloaded is 0.3.12).

The installer splash screen pops up, and you only have to follow the steps:

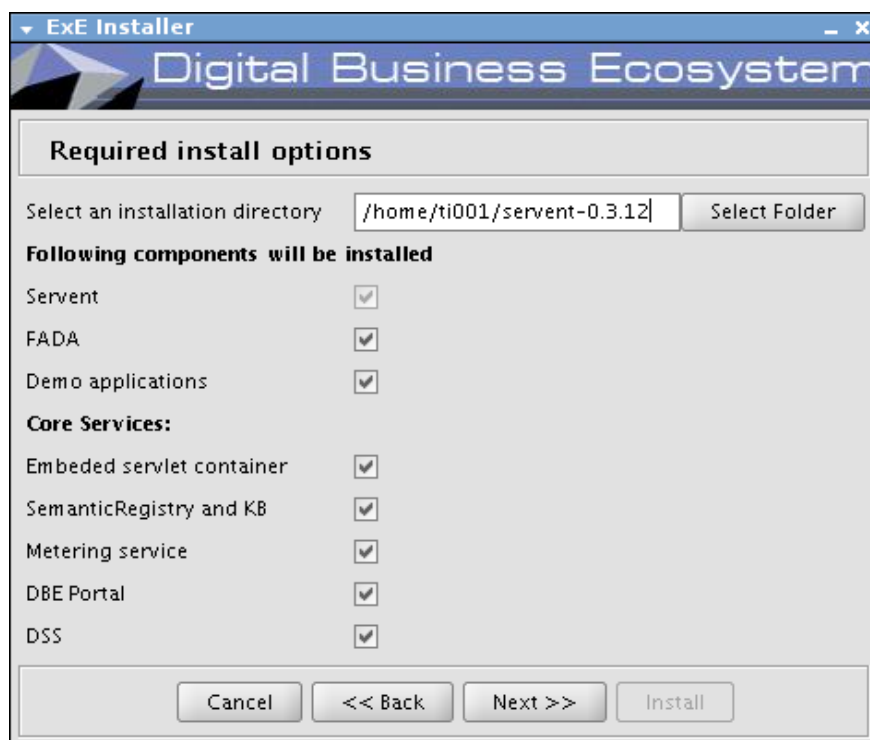


Click Next >>

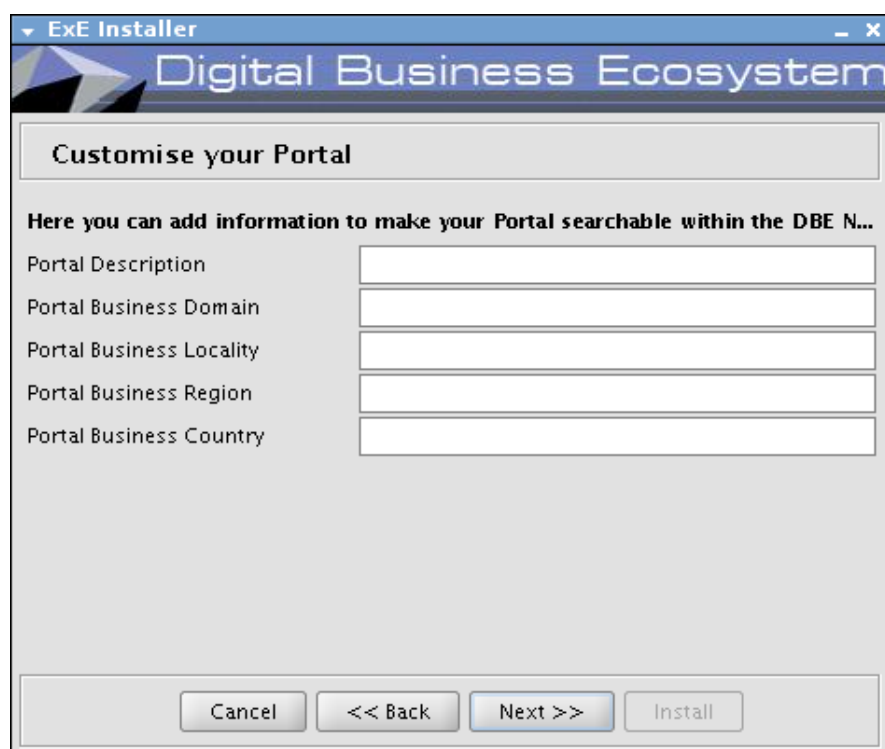


Read the licenses and accept them by clicking Next

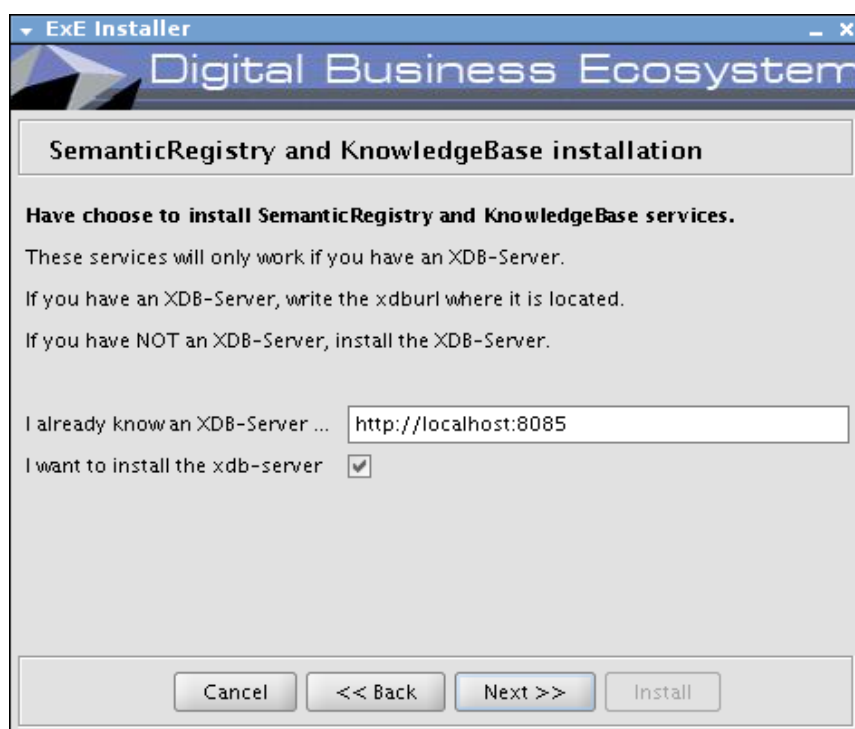
Choose the installation path and the components to install. All components default to be installed, and that's what you should do if this is your first installation.



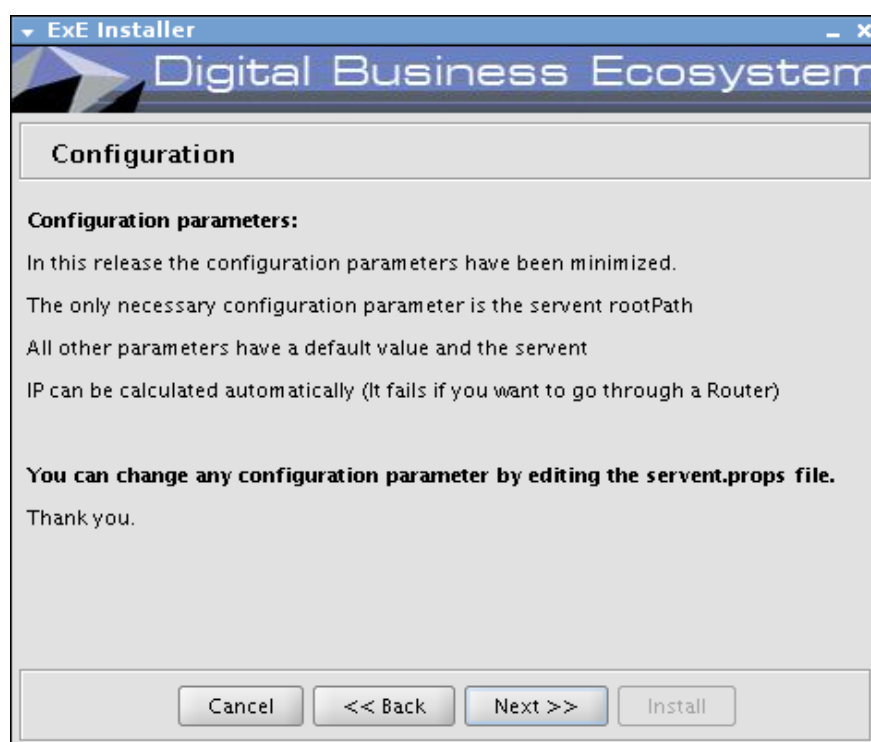
Choose the DBE Portal parameters.



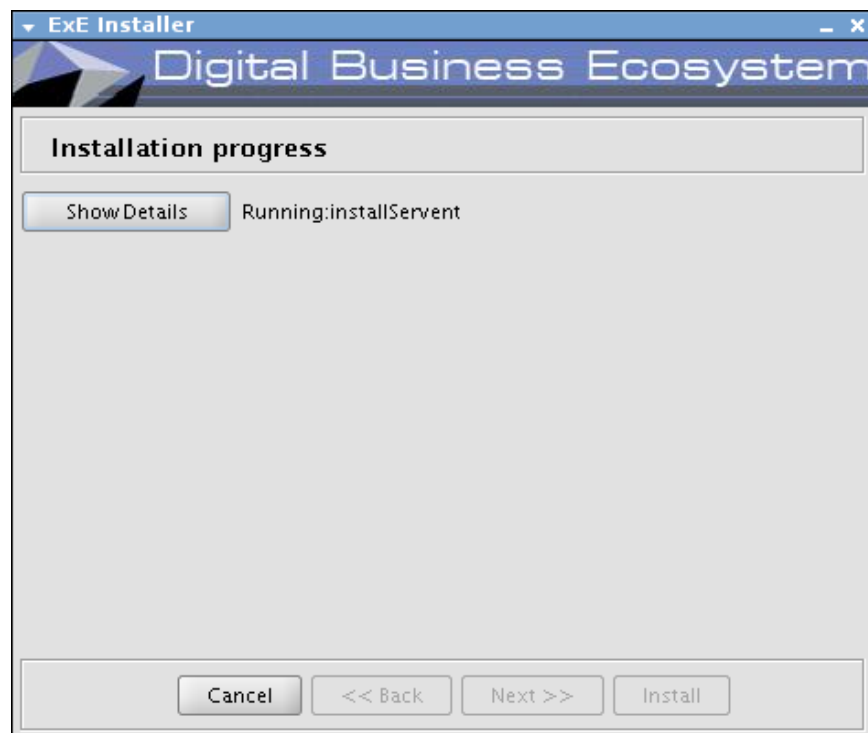
Choose to install the xdb-server. The xdb-server stores the various models used in the DBE, so unless you know what you are doing, choose to install it.



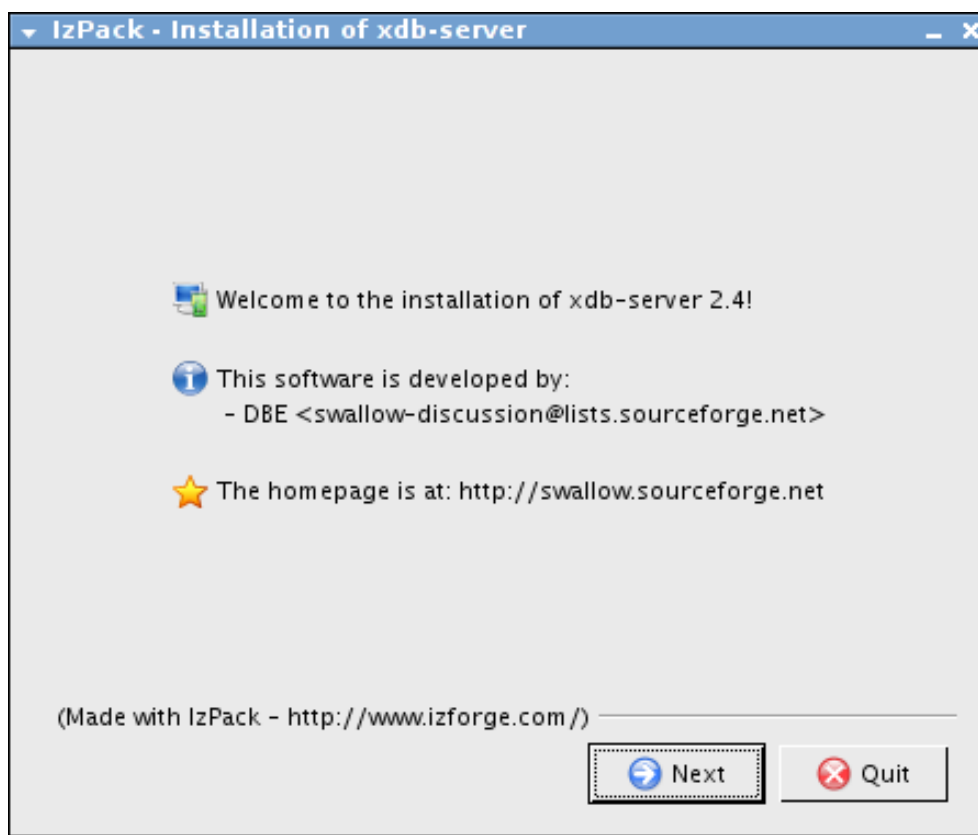
Read the information about what parameters need to be adjusted.



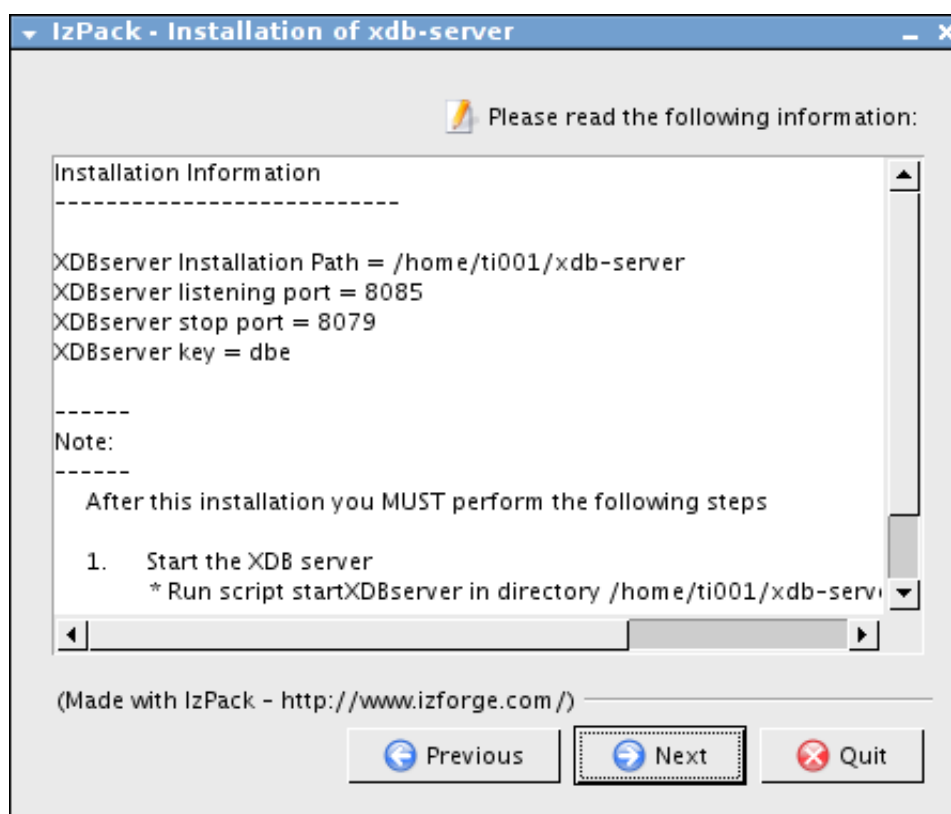
This is the last step before installation takes place. Just click on install...



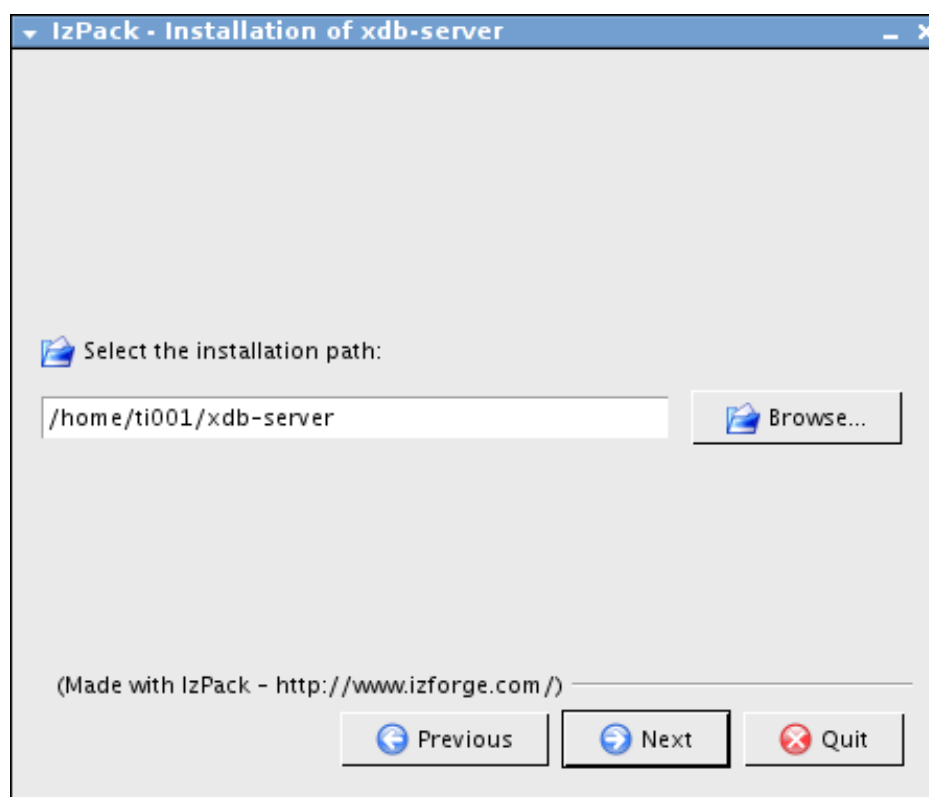
... and the installer will proceed with the installation. Before it finishes, the xdb-server installer will start:



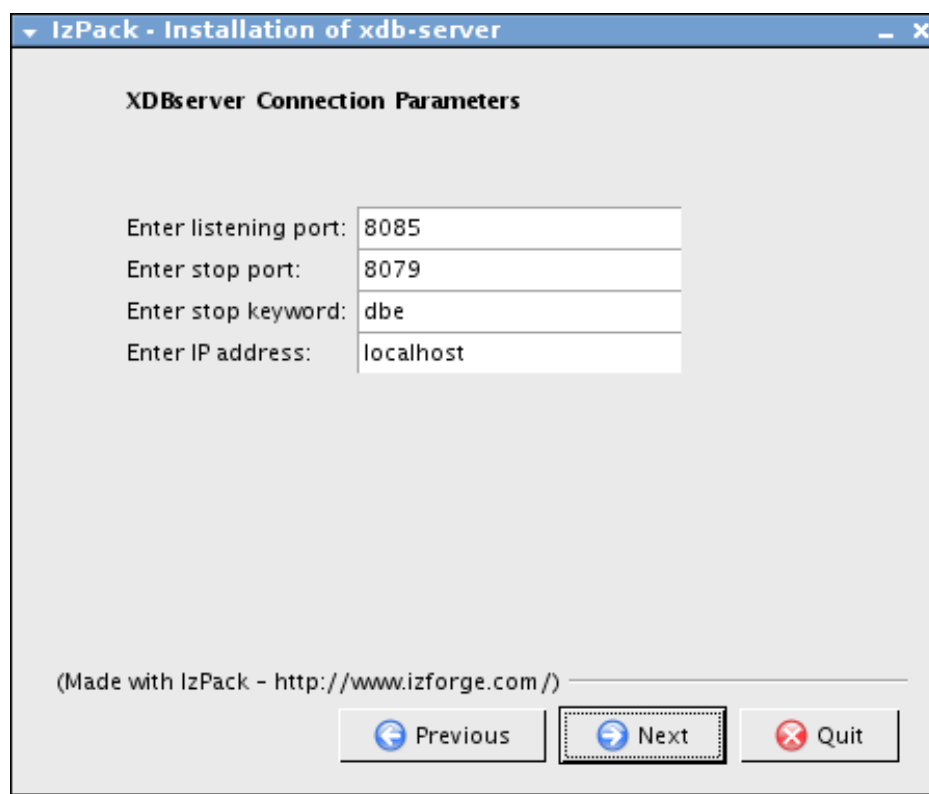
Click Next to proceed



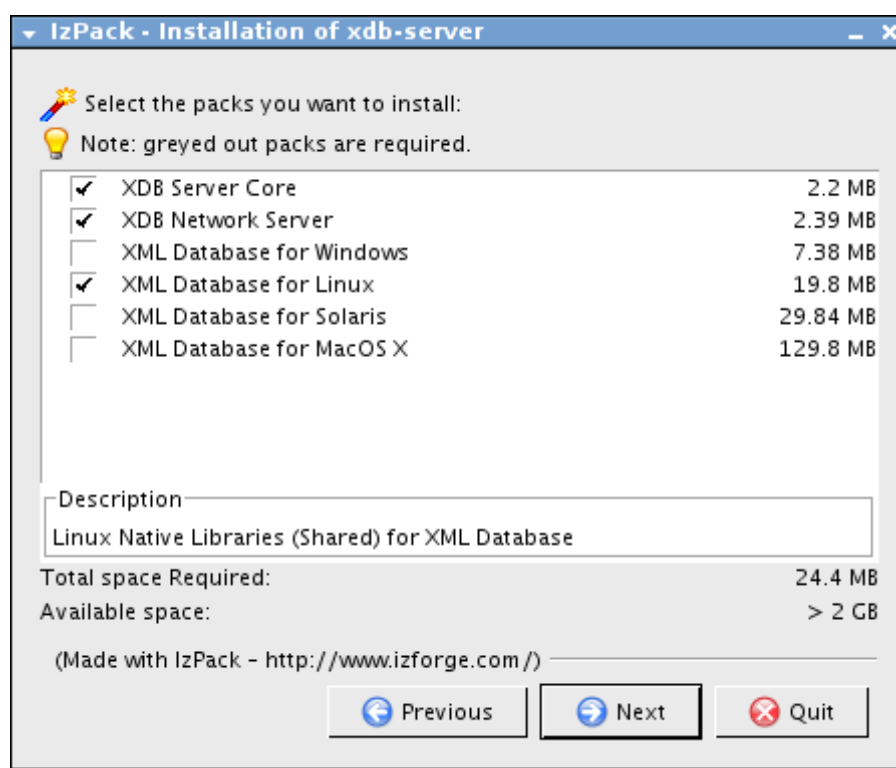
The first page offers information about the installation process and the running of the xdb-server. Clicking Next opens the installation path selection page:



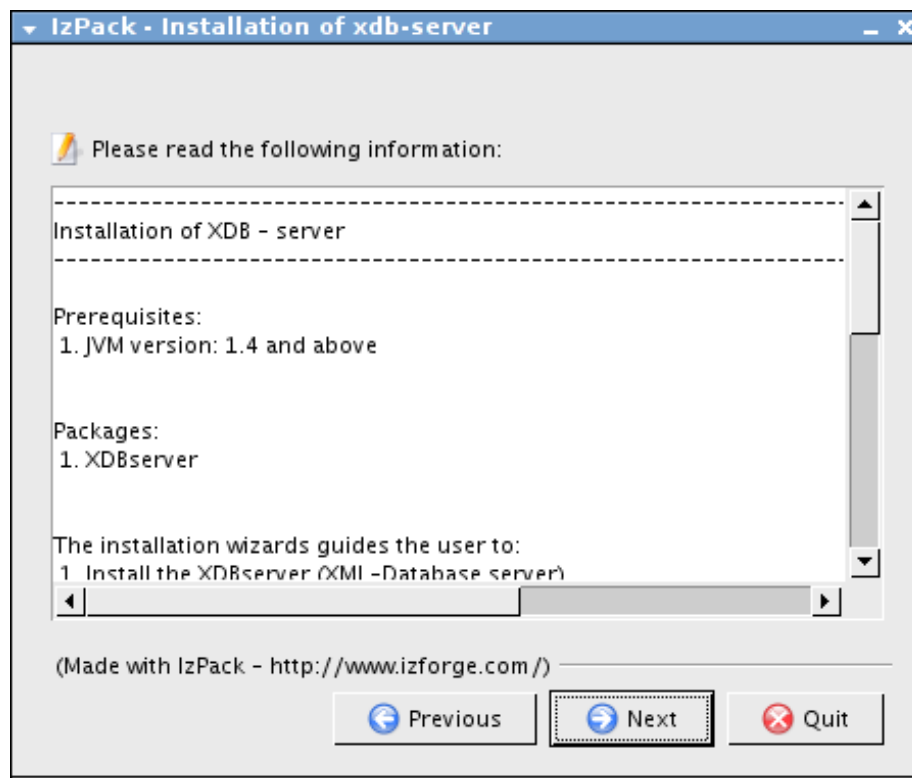
follows the parameter setting page. Again, unless you know what you are doing, accept the defaults.



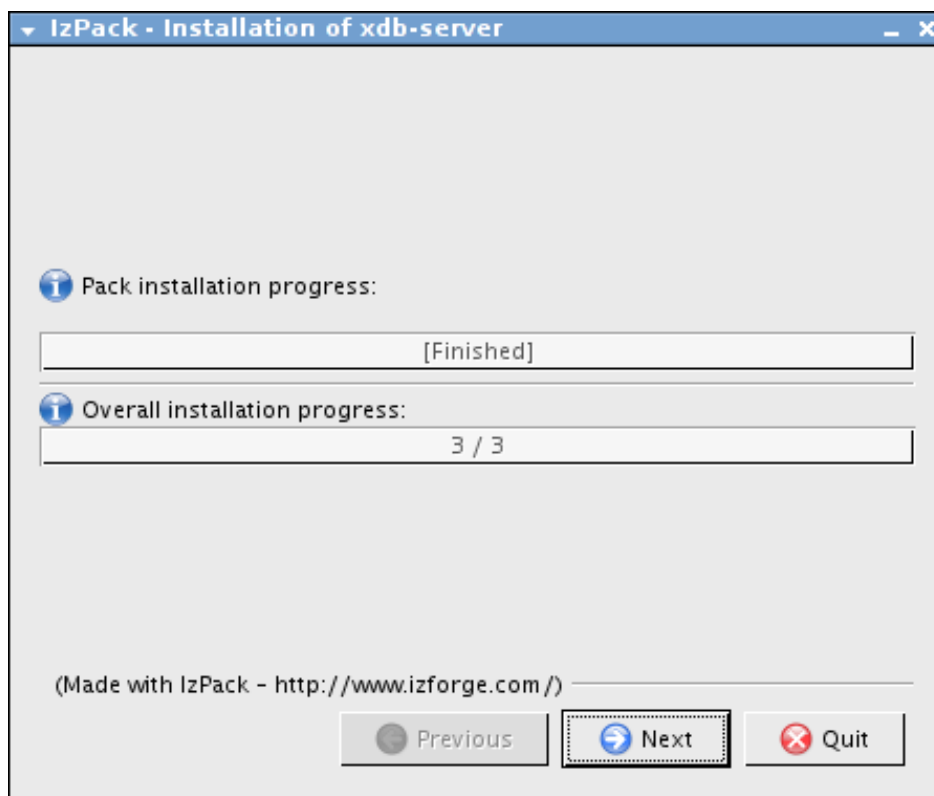
Choose the architecture you are installing the xdb-server onto.



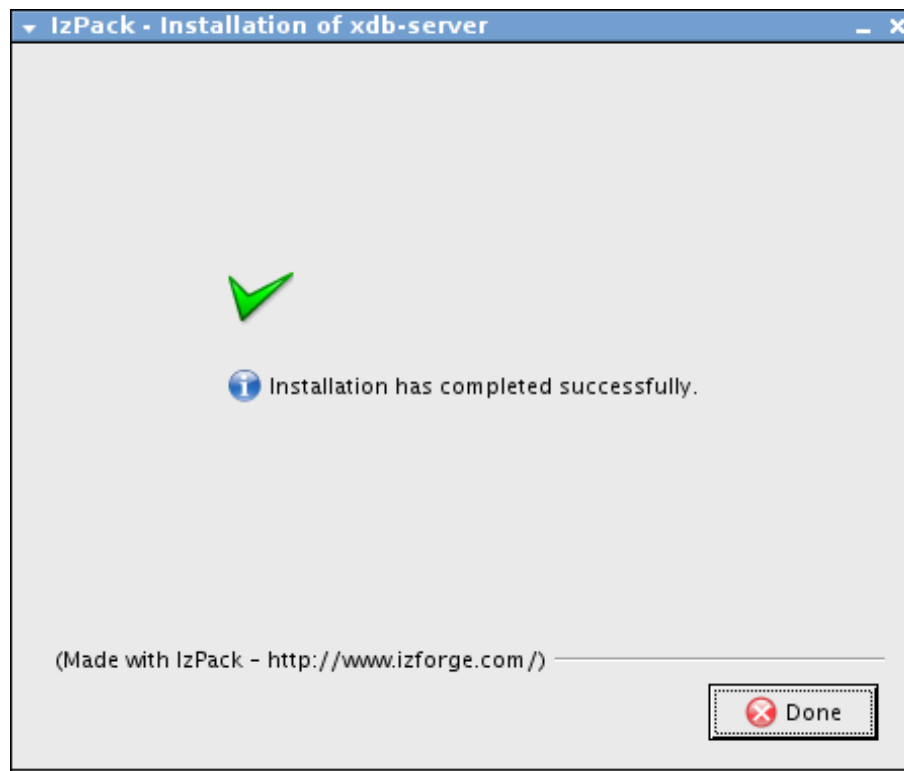
The next page offers more information about the installation and execution of the xdb-server. Read it and click Next.



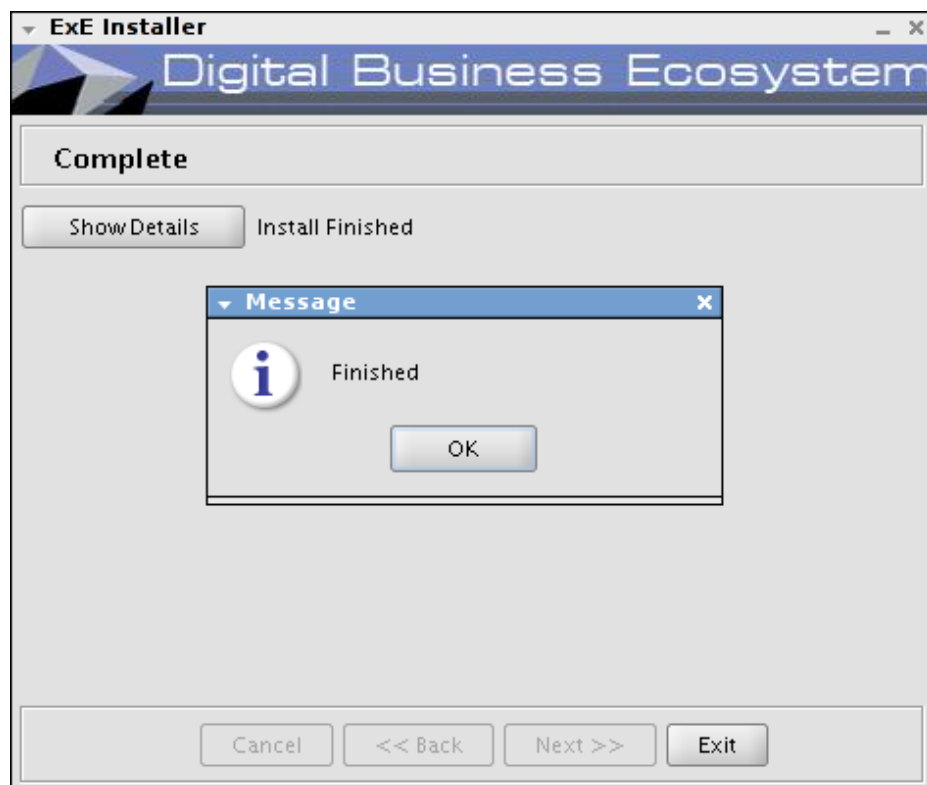
The installation takes place.



When it finishes...



... the ExE installer will finish also:



4. Bibliography

sf.net: , Sourceforge.net, , <http://sf.net>