

Issue 4

June 2013



LONDON SCHOOL OF ECONOMICS AND POLITICAL SCIENCE

Saw Swee Hock Student Centre Newsletter

Dear Colleagues,

This is an update on the Saw Swee Hock Student Centre Project. It looks at the 'Topping Out' ceremony, internal progress and the pedestrianisation plans

Inside this issue:

Topping Out	1
Internal progress and photos	2-3
Pedestrianisation plans	4
Osborne win silver award	4

Estates Division

Saw Swee Hock Student Centre

Topping Out Ceremony

The topping-out ceremony for the Saw Swee Hock Student Centre took place on 16 April 2013. This milestone in the construction of the building, which celebrates the completion of its structural frame, was attended by many of those involved in the project, including architect John Tuomey of O'Donnell Tuomey, who designed the building; chairman of Osborne Andrew Osborne, lead contractors for the project; LSE's Pro-Director, George Gaskell; Director of Finance & Facilities, Andy Farrell; Director of Estates, Julian Robinson together with members of the Estate Strategy Committee and Council.

Welcoming attendees to the event, Julian Robinson said: "The sheer scale of LSE's ambition, O'Donnell Tuomey's creativity and Osborne's craftsmanship mean that I can honestly say, in my 25 years of working in development and construction, I have never commissioned a building of this architectural quality and breath-taking uniqueness."

Andrew Osborne took the opportunity to enlighten guests about some of the history and tradition associated with the topping-out ceremony, an ancient ritual that is featured in the Bayeux Tapestry and mentioned in Geoffrey Chaucer's works. "The ceremony traditionally marked the reaching of the highest point of the building," said Andrew. "It originated in Persia and was performed to ensure that no evil spirits were trapped inside the building. Today, we interpret that as a wish for the building's safe completion and a celebration for those involved."



Alex Peters-Day receives the silver trowel on behalf of Professor Saw Swee Hock

Following the speeches, LSESU General Secretary Alex Peters-Day placed the final segment of concrete into the floor of the top level of the building. She did so on behalf of alumnus Professor Saw Swee Hock (PhD Statistics 1963), who made a landmark gift to the building in 2012. Professor Saw was unable to attend, but a silver trowel was presented to him in absentia to mark the occasion. He will receive it in person when he visits the School in the summer.

The iconic building, the first new building to be constructed at LSE for more than 40 years, has benefited from the support of a number of other donors, including alumni Mark Denning (BSc Economics 1980) and Aristote Mistakidis (BSc International Relations 1984), the Garfield Weston Foundation and the Wolfson Foundation.

Read more about the Saw Swee Hock Student Centre <http://www2.lse.ac.uk/supportingLSE/whereYouCanHelp/student%20centre.aspx>

Yours sincerely

K Kinsella
Director of Capital Development



Estates Division
Capital Development

Progress

The brickwork is progressing at some speed and is now looking very impressive from several vantage points on campus; the timber and aluminium window cladding will be completed this month. Services are now being installed at all levels and the reception desk and bar fronts to the new home of the Three Tuns and basement venue are complete. The goods lift is now complete, the fire fighting lift is being installed and installation of the passenger lifts will commence shortly now the crane has been removed. Lighting, data and fire alarm cabling have been installed up to level four, the gym floor.

The 850 person venue in the basement is really taking shape and the large double height space looks very impressive, especially when standing on the mezzanine looking out. The lighting gantry has been installed and the DJ and lighting booths are almost ready to receive equipment. The ceiling has a thick layer of render applied to it which should help the sound system, once installed. The cast in-situ concrete spiral staircase which will give access from the ground floor into the venue has been completed and the venue toilets are nearly ready to use! The timber and terrazzo floor finishes are being installed and the building is starting to look more and more exciting.

The project is due for completion in October 2013 with the new occupants moving in and becoming operational during November and December 2013

The centre will include:

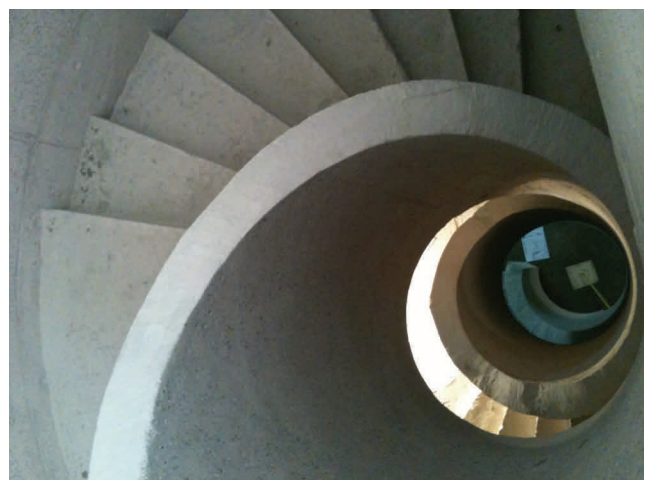
- the Students' Union reception
- the advice and representation centre
- sabbatical and general manager's offices
- Internet café
- large venue
- pub
- media centre
- fitness centre including gym and dance studio
- Faith centre
- LSE Accommodation, Sales and Marketing Office
- LSE Careers Service



Brickwork visible from Portsmouth Street



Venue space in the Basement



Spiral staircase between Ground floor and Basement



First floor timber flooring being laid in the Internet café



Spiral staircase



First floor café cloud used to reflect light and acoustic treatment to the space.



Faith Centre

For project information, a link to the live webcam and updates including full details about the site logistics visit the project web site on <http://www2.lse.ac.uk/intranet/students/newStudentsCentre/Home.aspx>

Contacts:

Emma Lovegrove, Principal Project Manager: e.j.lovegrove@lse.ac.uk, tel: 020 7955 7747



6th floor roof terrace

Osborne win award



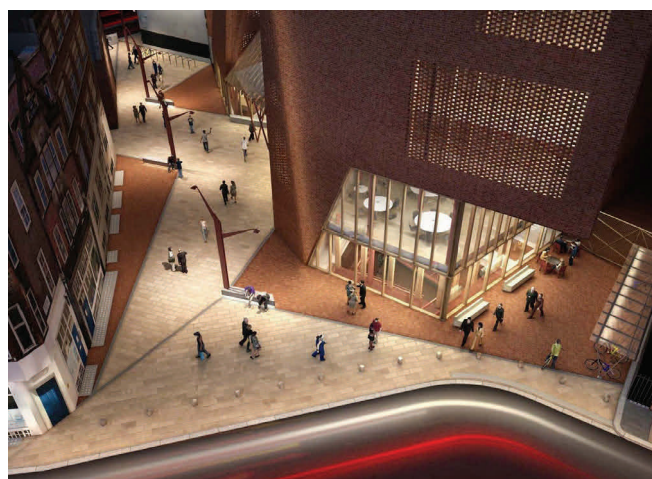
Congratulations to our contractors Osborne, led by site manager Graham Potts, who recently won Silver in the 2013 Considerate Constructors Scheme National Site Awards. Reportedly only the top 10% of sites in the country are invited to the awards ceremony. This year some twenty sites

where awarded bronze, around six silver and two received gold. The Estates Division is therefore delighted with the news that the Saw Swee Hock Student Centre site won a silver award, well done Osborne.

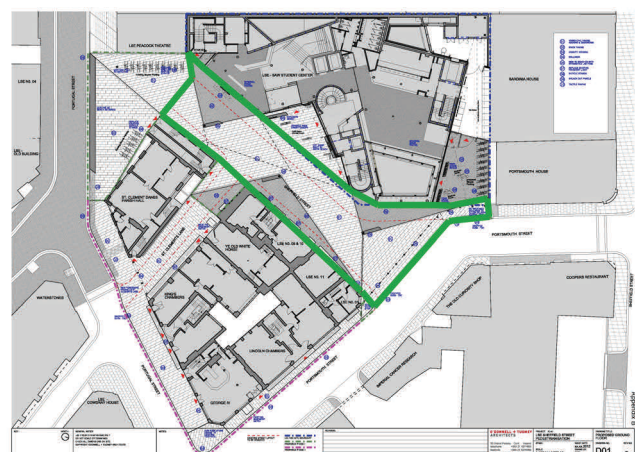
Pedestrianisation plans

Estates met with Westminster City Council (WCC) in January 2013 to present the initial pedestrianisation proposals prepared by O'Donnell Tuomey Architects (ODT), which were received positively. A design team comprising of ODT, Faithful + Gould and Atkins have been appointed to undertake the first stage of the design process. The visual impression of the project below shows that Sheffield Street will be paved over with a mix of brick, to complement the SAW building and stone paving. The street will have new feature lighting, fixed seating and trees will be planted to provide some greening to this area.

Subject to approval of the scheme by WCC, we aim to complete the works either in time for the building opening in November/December 2013, or in Spring 2014 in order to minimise disruption to staff and students.



Paving proposal for Sheffield Street pedestrianisation



Proposed pedestrianisation scheme of Sheffield Street