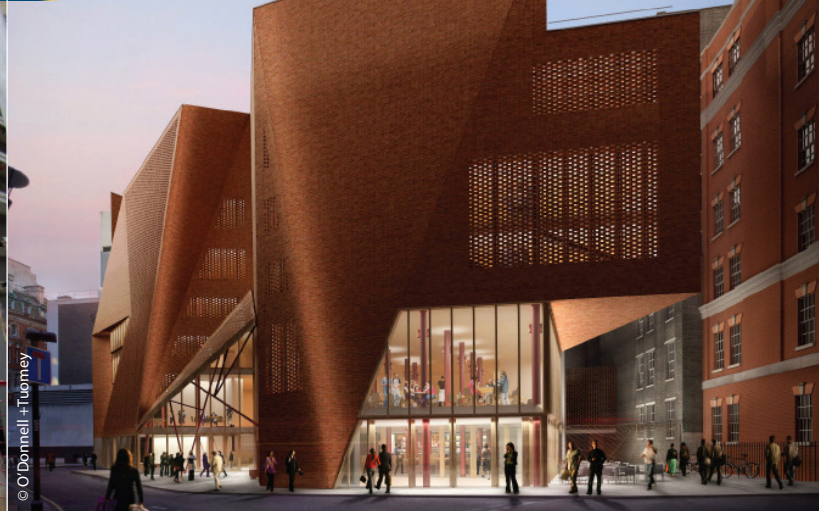


Newsletter

LSE - New Students' Centre



Welcome to the July issue of the residents' newsletter for the construction of the New Students' Centre for the London School of Economics and Political Science.

PROJECT AND PROGRAMME

This month has seen work continue on the concrete frame, with the focus shifting from the lower to the upper basement. The floor of the upper basement is now constructed and its walls are well underway. The concrete frame has progressed far enough to allow for the removal of the temporary props. The events space steel frame is rapidly taking form, giving definition to further parts of the building. There has been two cranes on site whilst the steel frame is being erected – a large mobile crane assisting with the steel frame, whilst the tower crane continues to service the other areas of the project.

Once again may we thank you for your patience regarding vehicle and material movement in to and out of the site, during which is a very important period for the project. Looking to August, the pre-cast planks above the events space will be laid and work on the ground floor slab should be well underway. There are also the steel transfer truss which spans

the events space - a separate newsletter will be circulated regarding these works.

MINIMISING DISRUPTION

We understand and appreciate that the construction project still has an impact on our neighbours and surrounding residents, particularly during warm weather when windows may be open. We are continuing to plan ahead with various subcontractors and suppliers, and remain to work closely with the Local Authority and the LSE regarding our strategy that will produce the least amount of nuisance as possible to you. The designated site working hours are 8am-6pm Monday to Friday, and 8am-1pm on Saturdays, and any noisy works are restricted to 8am-10am, 12pm-2pm, and 4pm-6pm Monday to Friday and 8am-1pm Saturday.

KEEPING UP TO DATE

If you would like to see the project, discuss anything of interest, or just meet the site team over refreshments, the **next monthly drop in day is on Friday 3rd August 2012 between 2pm and 3pm**. This is held in the Osborne project office, which is situated on the first floor of the Parish Hall – if you are unsure

where this is, a map of this can be found on the display boards on the site hoarding. Also you can keep up to date via the LSE's project specific website (www2.lse.ac.uk/intranet/students/NewStudentsCentre/Home.aspx), where you can find information on the design, contact information and a live webcam feed of the construction site. Alternatively you can remain updated with the daily activity or get in touch by our Twitter page (below).



CONSIDERATE CONSTRUCTORS

The site has been registered with the Considerate Constructors Scheme (CSS), which will mean that how we interact with our neighbours and operate our site will be regularly assessed by an independent body.

Posters showing our registration to the scheme will be clearly displayed with contact numbers for our representative.

More information on the CCS can be found on their website (www.ccscheme.org.uk).

KEY CONTACTS

Graham Potts
Osborne Project Manager
Tel 020 7748 6919
Email graham.potts@osborne.co.uk

Emma Lovegrove
LSE Project Manager
Tel 020 7955 7747
Email e.j.lovegrove@lse.ac.uk



follow us at:
[Twitter@OsborneLSEnsc](https://twitter.com/OsborneLSEnsc)

