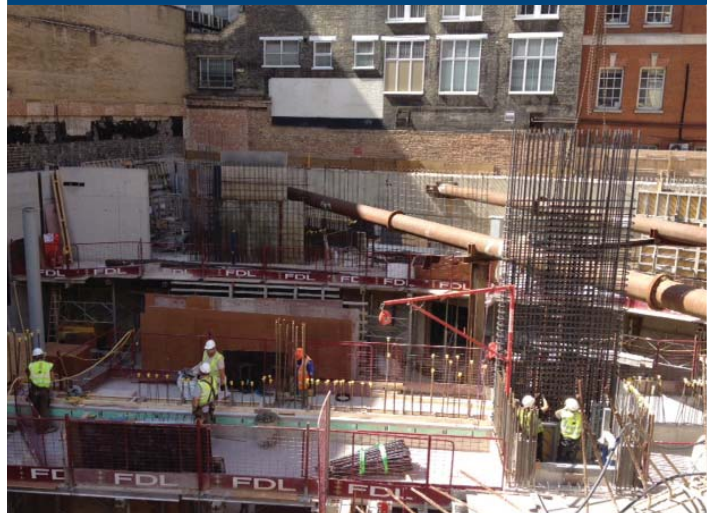


Newsletter

LSE - New Students' Centre



Welcome to the June issue of the residents' newsletter for the construction of the New Students' Centre for the London School of Economics and Political Science.

PROJECT AND PROGRAMME

This past month has seen the concrete frame progress, with the lower basement walls now constructed. The first area of mezzanine slab has recently been built – as seen in the photograph above – which will lead on to the construction of the mezzanine walls and staircases. Next week will see a key milestone with the commencement of the erection of the events space steel frame. This will be erected using a mobile crane, whilst the tower crane continues to service the other areas of the project.

We would like to thank you again for your patience regarding vehicle and material movement in to and out of the site, during which is a very important period for the project. Moving into July, the events space steel frame will be completed, allowing for the concrete structure to progress around and above it. Other items, such as the plant room steel frame, and the events space staircase, will also be erected.

MINIMISING DISRUPTION

Whilst works deemed to be very noisy – such as breaking out concrete – has reduced, we understand and appreciate that the construction project still has an impact on our neighbours and surrounding residents, particularly during warm weather when windows may be open. We are continuing to plan ahead with various subcontractors and suppliers, and remain to work closely with the Local Authority and the LSE regarding our strategy that will produce the least amount of nuisance as possible to you. The designated site working hours are 8am-6pm Monday to Friday, and 8am-1pm on Saturdays, and any noisy works are restricted to 8am-10am, 12pm-2pm, and 4pm-6pm Monday to Friday and 8am-1pm Saturday.

KEEPING UP TO DATE

If you would like to see the project, discuss anything of interest, or just meet the site team over refreshments, the **next monthly drop in day is on Friday 6th June 2012 between 2pm and 3pm**. This is held in the Osborne project office, which is situated on the first floor of the Parish Hall – a map of this can be found on the display boards on the site hoarding.

Also you can keep up to date via the LSE's project specific website (www2.lse.ac.uk/intranet/students/NewStudentsCentre/Home.aspx), where you can find information on the design, contact information and a live webcam feed of the construction site. Alternatively you can remain updated with the daily activity or get in touch by our Twitter page (below).

An additional newsletter will be circulated in the coming weeks, which will explain to surrounding neighbours and residents how we plan to manage the impact of the Olympic Games.



Registered site
www.ccscheme.org.uk

CONSIDERATE CONSTRUCTORS

The site has been registered with the Considerate Constructors Scheme (CSS), which will mean that how we interact with our neighbours and operate our site will be regularly assessed by an independent body.

KEY CONTACTS

Graham Potts
Osborne Project Manager
Tel 020 7748 6919
Email graham.potts@osborne.co.uk

Emma Lovegrove
LSE Project Manager
Tel 020 7955 7747
Email e.j.lovegrove@lse.ac.uk



follow us at:
[Twitter@OsborneLSEnsc](https://twitter.com/OsborneLSEnsc)

