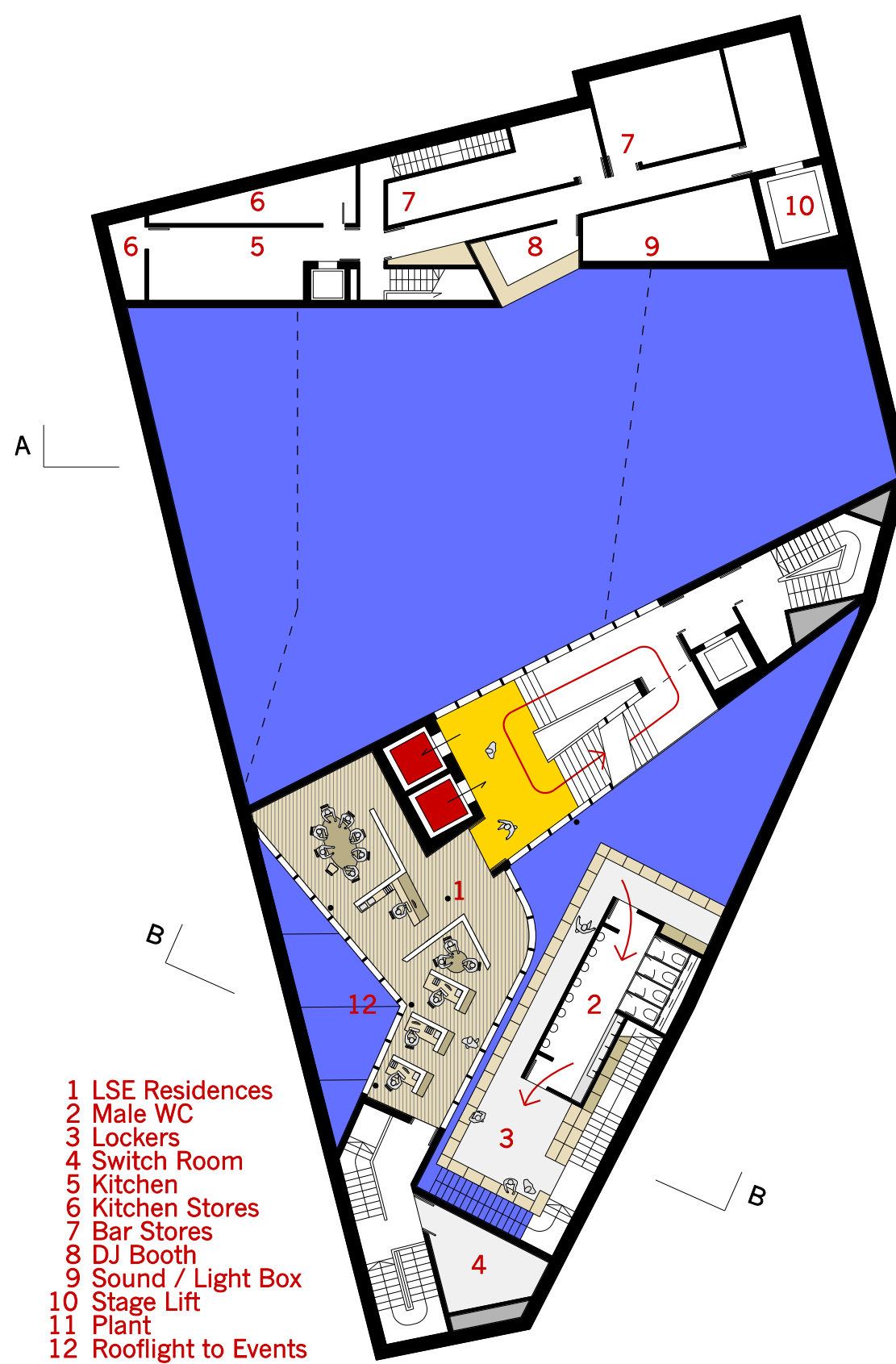
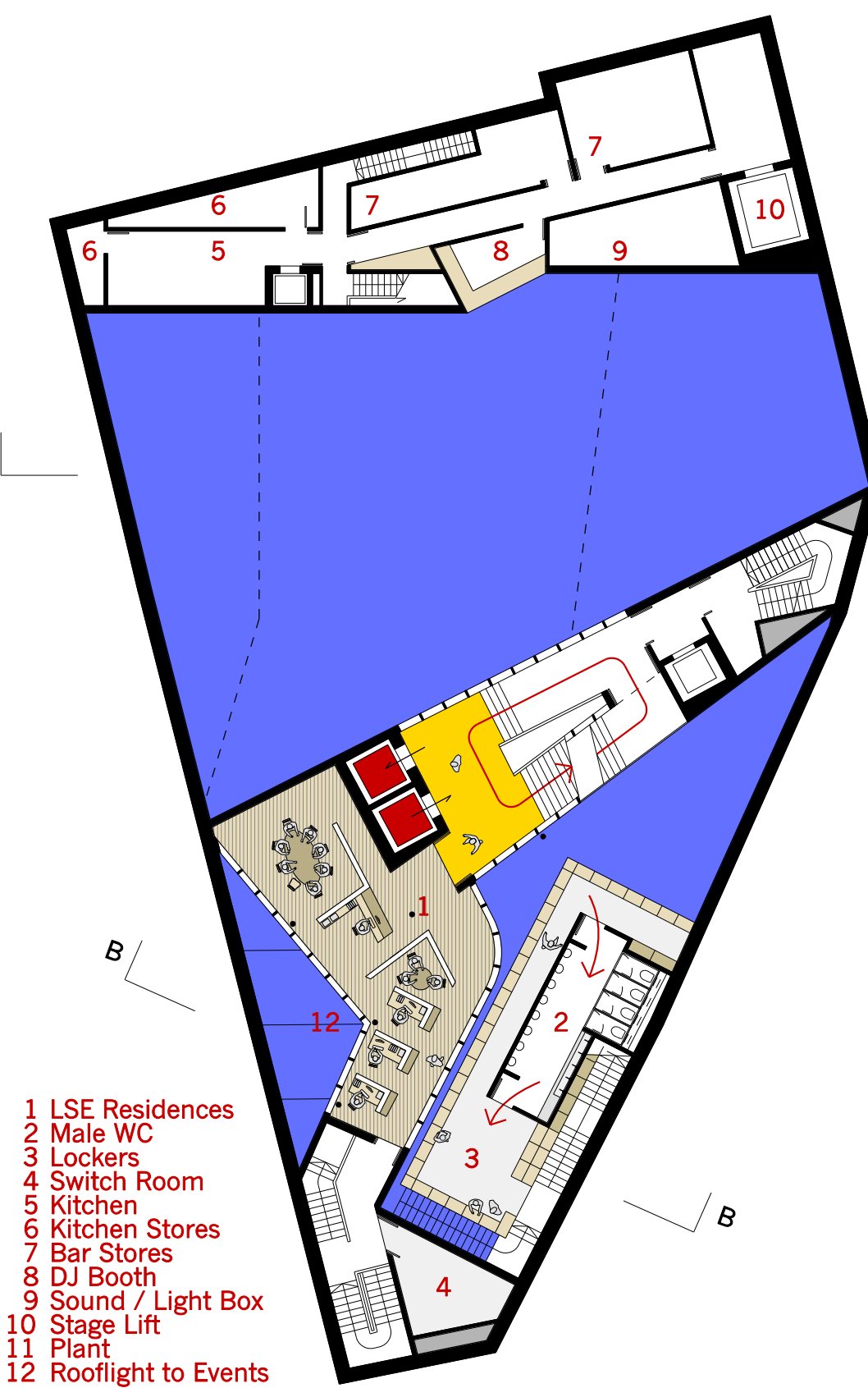


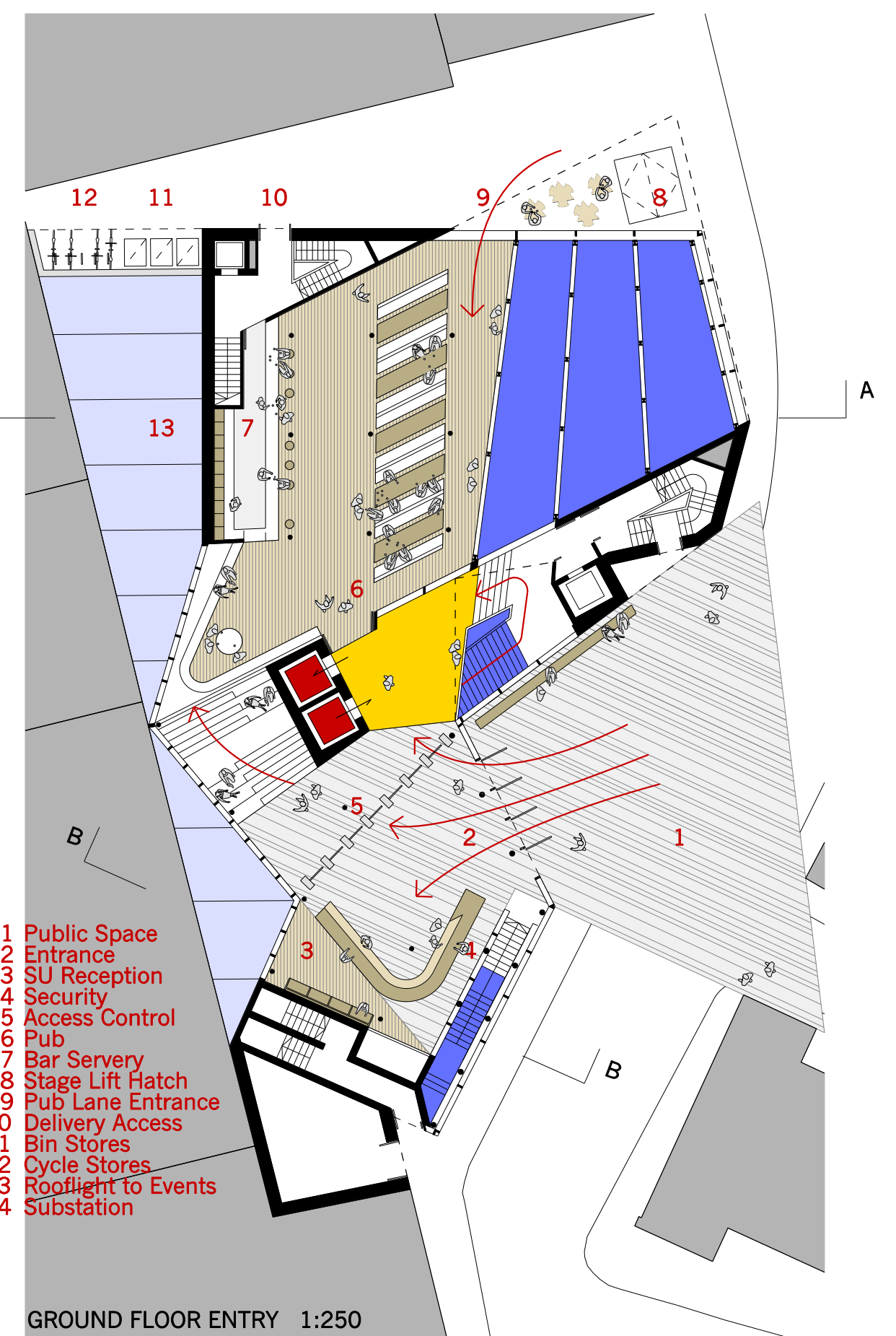
BASEMENT EVENTS 1:250



SUB BASEMENT PLANT 1:500



BASEMENT MEZZANINE 1:250



GROUND FLOOR ENTRY 1:250

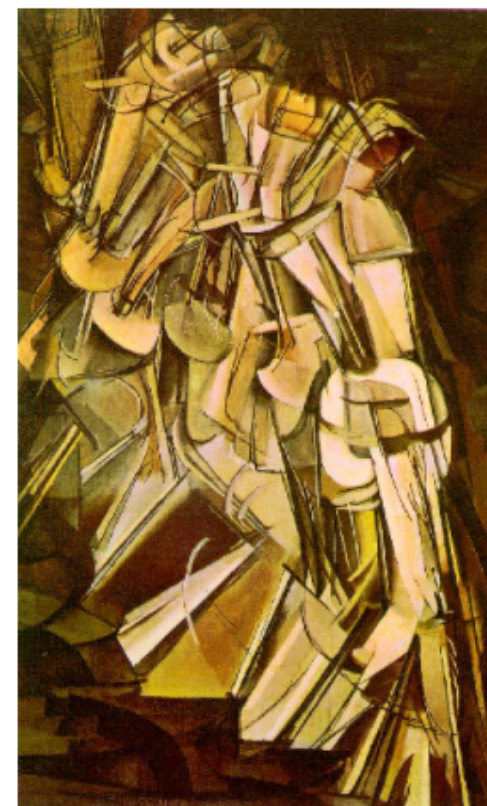
LSE STUDENT UNION

The site is located at the knuckle point convergence of the network of narrow streets that characterise the LSE city centre campus. We propose a public space at the threshold of the Student Union on axis with St Clement's Lane, to create a place of exchange; a spatial bowtie that intertwines circulation routes, splicing visual connections between internal and external movement, and pulling pedestrian street life into and up the building.

It is this conceptual corkscrew that allows a vertical building to work as a single organism; like a tree you keep climbing up and out into the branches from which you view your next move.

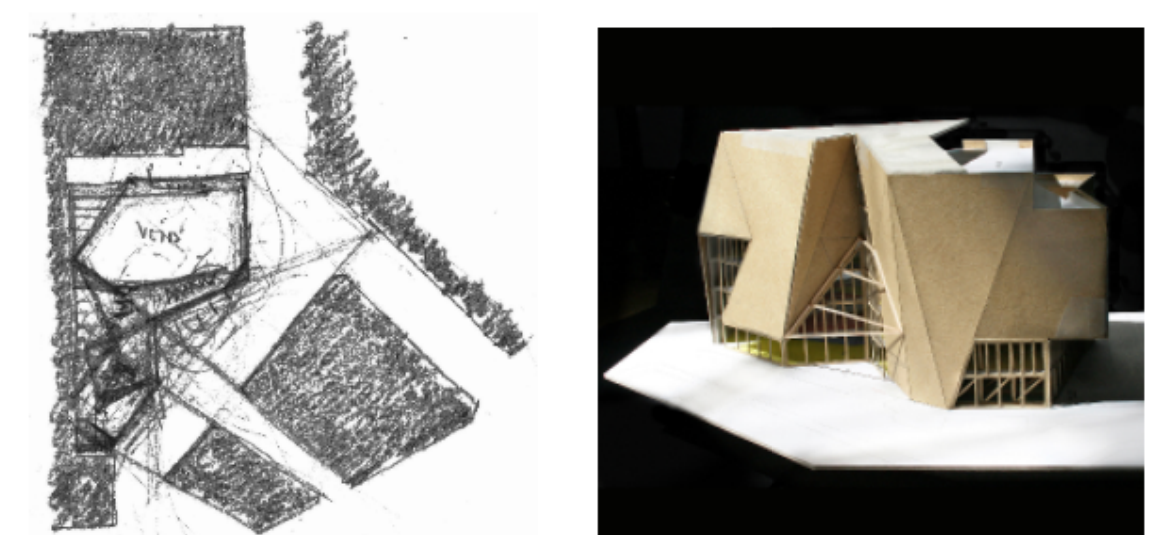


PAUL KLEE
Through a Window



MARCEL DUCHAMP
Nude Descending Staircase

LATTICE LANTERN
A brick basket



FIRST CONCEPT SKETCH

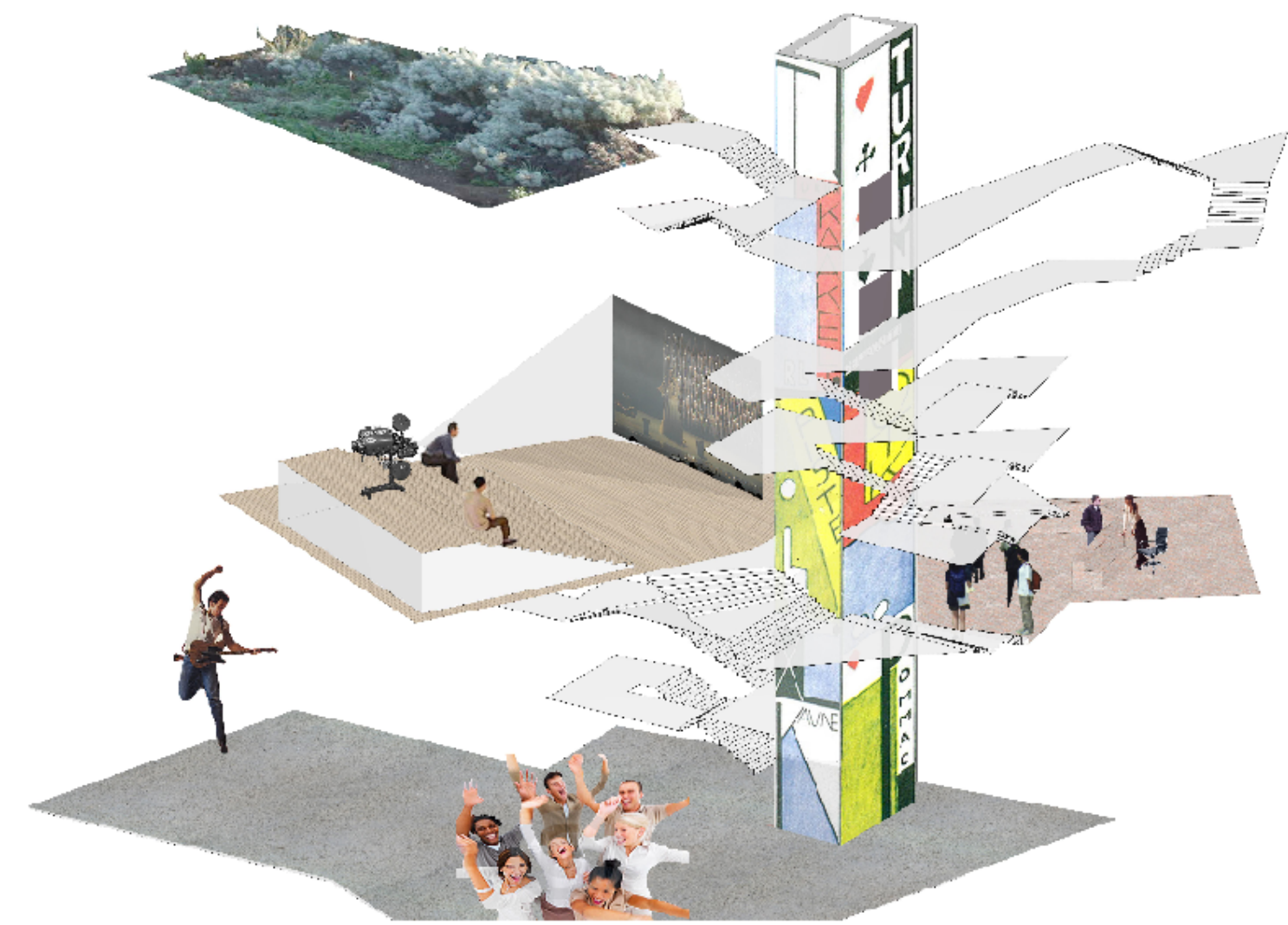
STUDY MODEL

Once inside the entrance hall, open stairways spiral around the central lift shaft that forms a skewering pivot-point at the centre of gravity of the plan. The entrance hall overlooks the large events space below, through sound proof glazed screens, and is itself overlooked by the cafe space on the first floor above. Wide stairs with slow steps and integrated seating make a flowing continuous ribbon of movement from street to roof garden uninterrupted by fire lobbies or other unwanted obstacles to visual legibility.

London is a city of bricks. Our design relates to the resilient characteristics of a city's architecture by a combination of old and new, with familiar materials made strange. We propose to clad the exterior walls of the new Student Union in material recycled from the old St Philips Hospital buildings. Old bricks used in a new way, with each brick offset from the next creating dappled day-lit spaces on the inside and the effect of a glowing lattice lantern when seen from the streets at night.



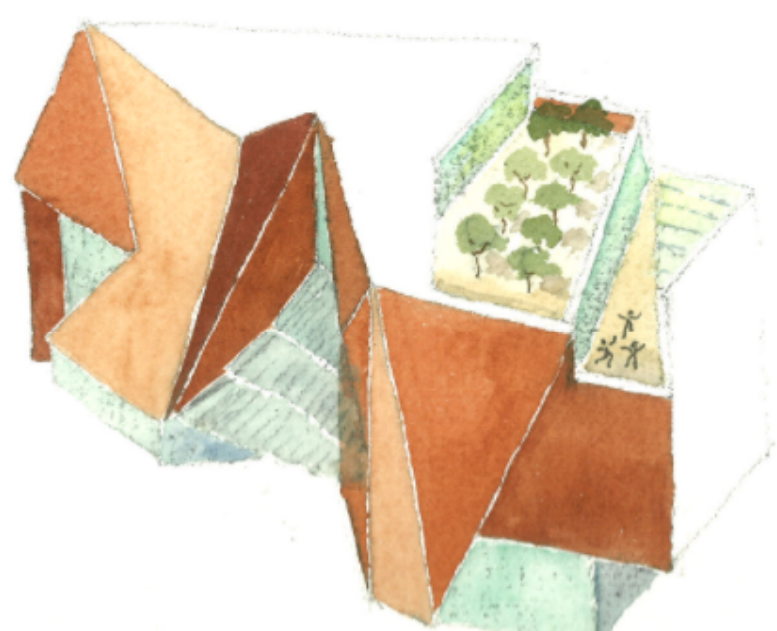
NIGHT VIEW FROM LINCOLN'S INN FIELDS
The building is seen from the streets like a glowing lattice lantern



CONCEPTUAL CORKSCREW



SITE PLAN 1:1,000
Convergent routes



DESIGN SKETCH
Bird's-eye view