



News & views

October 2007

Music, art and more

BY PROFESSOR SARAH WORTHINGTON, PRO DIRECTOR AND CHAIR, ARTS ADVISORY GROUP

While LSE does not teach the arts or music, there is a vibrant cultural side to the School – from weekly free music concerts in the Shaw Library, and an LSE orchestra and choir with their own professional conductors, to various film, art, dance and photographic student societies, and artist-in-residence projects.

In addition, many of our students and staff are talented musicians, actors, artists, film-makers and writers. Their creativity is an inspiration. It often leads to fascinating ideas and innovative projects which contribute to LSE's broader sense of engagement with the wider world.

Also, our campus is perhaps not the prettiest university space. However, what you will find around the School and its residences are many paintings, sculptures, photographs and mini-exhibitions. Can I encourage you all to explore LSE's arts and music programme and discover the School's cultural talent and diversity for yourself.



A very warm welcome to...

Richard Hylton will take up his position as the School's arts co-ordinator on Monday 8 October.

This new position has been established to expand LSE's flourishing arts and music programme, and enhance the student and staff experience.

Richard previously worked as curator at the Unit 2 Gallery at London Metropolitan University. He graduated from Plymouth University with a BA in Fine Art and completed a MA History of Art from Goldsmiths College, London.

Email Richard at: r.a.hylton@lse.ac.uk



Marina Benjamin, LSE's first Royal Literary Fellow, joins the School this autumn. The fellowship is offered by the Royal Literary Fund, enabling established writers to spend two days a week in academic institutions to provide support to students with improving their writing.

Marina was previously arts editor of the *New Statesman* and deputy arts editor at the *Evening Standard*. Her book, *Rocket Dreams*, was shortlisted for the Eugene Emme Literature award. Her latest book is *Last Days in Babylon: the story of Jews in Baghdad* (Bloomsbury).

See: www.bloomsbury.com/marinabenjamin



Highlights of Michaelmas term

Psychoanalysis@LSE 2007 public debate

ANTONY GORMLEY IN CONVERSATION WITH DARIAN LEADER AND RENATA SALECL

Public Space and the Body

Tuesday 16 October, 6.45-8pm, Old Theatre

Over the last 25 years, Antony Gormley has revitalised the human image in sculpture through a radical investigation of the body as a place of memory and transformation. This work provides a unique means of exploring the theme of public space and the body.

Antony Gormley was awarded the Turner Prize in 1994 and the South Bank Prize for Visual Art in 1999. Darian Leader is a psychoanalyst and author. Renata Salecl is centennial professor of law at LSE and a senior researcher in criminology at the University of Ljubljana, Slovenia.

This event is free and open to all with entry on a first come, first served basis.

Public lecture

HOWARD DAVIES

Judging the Booker Prize: what concerns novelists in English today (and what does not)

Tuesday 6 November, 6.30-8pm, Hong Kong Theatre

LSE Director Howard Davies is chair of judges for the 2007 Man Booker prize. A regular fiction reviewer for *The Times*, he launched LSE's *Reading for the Future* series at the Hay Festival in May this year.

In this lecture, he considers the process of judging novels and the themes written about.

The winner of the Man Booker prize will be revealed on Tuesday 16 October at an awards ceremony to be held at the Guildhall, London.

See Howard Davies's blog at: www.themanbookerprize.com

This event is free and open to all with entry on a first come, first served basis.

Global Civil Society Yearbook exhibition

Voices of Global Civil Society: cartoonists, comic strip artists and graphic novelists

Wednesday 10 October-Thursdays 29 November
Atrium, Student Services Centre

Featuring artists from around the world, this free exhibition complements the launch of *Global Civil Society 2007-8*, which is themed on communicative power and democracy.

A public panel discussion on Wednesday 10 October will mark the launch of this year's edition, followed by the opening of the cartoon exhibition at a reception in the Atrium.

See: www.lse.ac.uk/Depts/global/2gscevents.htm for more information.



Concerts, choir and orchestra

Music is an important part of LSE life. The School has its own orchestra and choir, both conducted by professional musicians, which rehearse weekly and give public performances at the end of the Michaelmas and Lent terms. If you want to know more about the orchestra and choir, or are interested in joining, then please email: su.soc.music@lse.ac.uk

The first orchestra rehearsal will be in the Shaw Library, 6th floor, Old Building at 6.45pm on **Monday 8 October**, the first choir rehearsal will be in the same venue but at 6pm on **Tuesday 9 October**.

There is also a series of free weekly classical lunchtime recitals which offers the opportunity to staff, students, alumni and members of the public to listen to concerts, often by distinguished international artists, in the intimate surroundings of the Shaw Library.

Keep in touch with concerts and other arts events at:
www.lse.ac.uk/collections/artsAndMusic



LUNCHTIME CONCERTS (Free and open to all. Entry on a first come first served basis)

Thursday 11 October, 1.05pm, Shaw Library

Anna Polonsky (piano) will play Schumann Arabeske Op18, Blumenstück Op19, and Intermezzi Op4, and Chopin Three Mazurkas Op 50, Adagio and Rondo.

This outstandingly accomplished artist has appeared in major international music festivals and has been described as 'a musician of exceptional refinement' (*New York Times*).



Thursday 22 November, 1.05pm, Shaw Library

Adam Walker (flute) and **John Reid** (piano) will perform JS Bach Flute Sonata, Debussy Epigraph Antiques, Martinu Scherzo, and Prokofiev Sonata in D, Op 94 (1943).

At 14, Adam was the youngest winner of the British Society Flute Competition and concerto finalist in the BBC Young Musicians Competition.



Thursday 18 October, 1.05pm, Shaw Library

One of the outstanding quartets of their generation, the **Doric String Quartet** will perform Barber String Quartet and Brahms String Quartet in C minor Op51/1.

Thursday 25 October, 11.05pm, Shaw Library

Violinist **Cecilia Ziliacus**' performance will include the works of Mozart, Debussy and Bartok

This internationally acclaimed Swedish violinist has played in the world's major concert halls. Her recent CD earned her the Best Classical Artist of the Year award.



Thursday 29 November, 1.05pm, Shaw Library

Martyna Jatkaukaite (piano) will perform Beethoven 32 variations in C minor, Liszt, Concert Etudes No 2 *La Leggerezza*, No 1 *Il Lamento*, Albeniz from *Iberia* Bk 4 Malaga, Prokofiev Sonata No 7 op 83.

This Lithuanian pianist is a winner of first prizes in international competitions in Greece, Rome, Vilnius and Bucharest.

Thursday 6 December, 1.05pm, Shaw Library

Matan Porat (piano) will perform Beethoven Sonata in D, Op 28 *Pastorale*, and Brahms Intermezzi Op 118.

Porat is an outstanding pianist of great insight and sensitivity who has performed with major orchestras and is currently studying with Murray Peraia.



Thursday 1 November, 1.05pm, Shaw Library

Bartholomew Lafollette (cello) and **Alasdair Beatson** (piano) will perform Liszt La lugubre Gondola, Janacek Pohadka, and Brahms Cello Sonata No1 in E minor, Op38.

Winner of several prizes, Bartholomew has performed as soloist and with orchestras throughout Europe.

Thursday 8 November, 1.05pm, Shaw Library

The Abbott O'Gorman Piano Duo comprising Jocelyn Abbott and Laura O'Gorman will perform Dvorak 3 Slavonic Dances, Ravel Mother Goose Suite, and Gershwin Rhapsody in Blue.

This duo's CDs have been very well reviewed.



Thursday 15 November, 1.05pm, Shaw Library

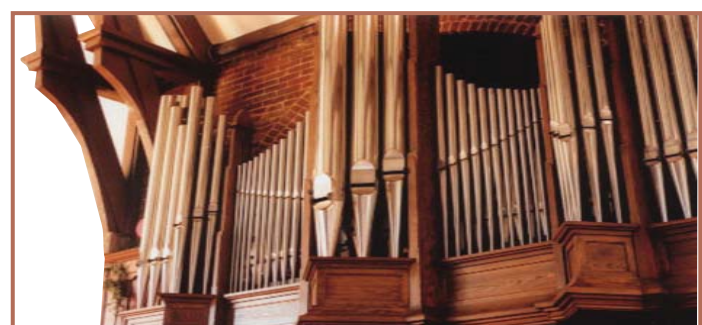
Ahmed Dickinson plays guitar music from Cuba, Venezuela, Argentina and Spain and features the works of Piazzolla, Lauro, Rojas, Pujol and Martin.

Ahmed is a talented performer and transcriber of Cuban and Latin American guitar music and has won several prizes.



Thursday 13 December, 1.05pm, Shaw Library

This exciting new jazz group – the **Dialogues Trio** – plays original compositions fusing classical structures with improvised jazz. The group comprises **Bruno Heinen** (piano), **Andrea Di Biase** (bass) and **John Scott** (drums).



Evening concerts

Wednesday 31 October, 7pm, Shaw Library

The LSE Gala Concert will feature **Jennifer Pike** (violin) and **Daniel Tong** (piano). Their Shaw Library programme comprises Debussy Violin Sonata (1917), Beethoven Sonata No 7 in C minor, Op 30 No 2, Ysaye Sonata No 2 in A minor Op 27 No 2, and Elgar Violin Sonata in E minor, Op 82.

Regarded as one of Britain's finest violinists, Jennifer was, at just 12 years old, the youngest ever winner of the BBC Young Musicians Competition in 2002.



Saturday 1 December, 7.30pm, Clement Danes Church, Strand, Winter Concert

This joint concert by the LSE choir and the university choir of St Gallen will include *O Magnum Mysterium* by Victoria, *Ave Maria* by Bruckner, folksongs from Switzerland, various winter carols, and Handel's *Dettingen Te Deum*.

This event is ticketed. Tickets cost £4 for LSE and St Gallen staff, students and alumni and £7 for members of the general public. There are three ways to request a ticket – online at www.lse.ac.uk/events by email at events@lse.ac.uk or by calling 020 7955 6100.



Wednesday 28 November, 7pm, Shaw Library

This LSE Gala Evening Concert will feature the talents of the **Rosamunde Piano Trio** comprising **Martino Tirimo** (piano), **Ben Sayevich** (violin) and **Daniel Veis** (cello). The trio will perform Beethoven Piano Trio in B flat Op 11, Peter Fribbins *Softly in the dusk* (2007) and Brahms Piano Trio in B Op 8.

The Rosamunde Piano Trio, which has delighted LSE audiences before, was formed in 2003 by the outstanding virtuoso pianist, and renowned Schubert player, Martino Tirimo. Daniel Veis is the Czech Republic's finest cellist and Ben Sayevich is professor of music at University of Kansas.

Both the above evening concerts are ticketed. Tickets cost £4 for LSE students and staff, and £10 for general public. They are available either by email from events@lse.ac.uk or by calling 020 7955 6100.

Wednesday 5 December, 7.30pm, St Clements Danes Church, Strand, Christmas Concert

This concert features the LSE choir and orchestra whose performances will be under the guidance of renowned conductor Matthew Taylor and choirmaster Andrew Campling. Their programme will comprise a selection of Christmas carols and *Dettingen Te Deum* by Handel as well as Cy Lloyd Prelude and Fugue (world premiere), Tchaikovsky Variations on a Roccoco Theme, and Schumann Symphony No 4.

This event is ticketed. Tickets are £4 for LSE staff, students and alumni and £6 for members of the public. There are three ways to request a ticket – online at www.lse.ac.uk/events by email at events@lse.ac.uk or by calling 020 7955 6100.



LSE photography competition

When the School's Arts Advisory Group and the SU Arts Forum decided to hold a photography competition in Michaelmas term 2006, the response was amazing.

More than 400 entries were received within two weeks. The prize for many of the student and staff photographers was to see their print on display in an LSE classroom. Around 100 of the entries have been chosen by LSE full-time staff photographer Nigel Stead to be installed in School classrooms.

Nick Byrne, director of the LSE Language Centre and a member of the Arts Advisory Group, and Tom Eshelby, chair of the LSESU Arts Forum, had the difficult task of choosing their 24 favourites from the 100 entries.

Then international photographer Ali Kepenek and Anne Williams, course leader of MA Photography at London College of Communication, whittled it down to one overall winner, two joint runners up and a third place winner. The overall winner, Knut Magnus Koren, won £100, the joint runners up £50 each, and the third place winner £25.

The winners can be seen online at www.lse.ac.uk/collections/artsAndMusic/LSEphotocompetition.htm

The competition will be held again in the 2007-8 academic year with more information available at: www.lse.ac.uk/collections/artsAndMusic/



Top: winner: *Danger and Disillusion (Chernobyl)* by Knut Magnus Koren.

Middle: joint runner up: *Regents' Canal* by Juana Schlenker

Bottom: joint runner up: *Littlest Things* by Sandra Renard

Sculptures on campus

The last academic year saw new sculptures appear around campus.

A baby elephant stands on the steps in Clare Market, and an eagle's head by the steps down to Tower One. There is also the penguin outside the Economists' Bookshop, and a tiger's head in Bankside hall.

Why are they here? The statues are a donation from Canadian businessman Louis Odette, a 1944 alumnus of the General Course and a noted patron of sculptures to public spaces. The Odette Sculpture Park in Windsor, Canada, was made possible through his and his wife's generosity and that of the P & L Foundation.

Their installation was generously assisted through donations from the School's alumni to the Annual Fund. The Annual Fund raises vital unrestricted funds to support scholarships, student services and facilities at the School.

For more information about all the sculptures, see: www.lse.ac.uk/collections/artsAndMusic



For a detailed listing of this term's events, see the *Events* leaflet (out at the beginning of every term) or *News&Views* (out every week during term time).

For information on, or to contribute to, the *Events* leaflet, please contact Esther Adediran, ext 7060, email: e.adediran@lse.ac.uk

For information on, or to contribute to, *News&Views*, please contact Toni Sym, ext 7417, email: t.sym@lse.ac.uk

LSE Perspectives

LSE Perspectives is an online gallery featuring images contributed by students and staff, reflecting some of the fascinations, concerns, quirks and artistic sensibilities of the LSE community.

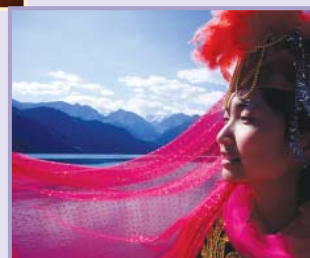
Each month a new selection of photographs will be selected by the arts co-ordinator.

You can find out more about how to submit your contribution at: www.lse.ac.uk/collections/artsAndMusic/LSE_Perspectives/



Two examples of photographs on the Perspectives site.
Above: *Fire* by Amanda Nunn.

Right: *Tribal Girl at Tian Chi* by Emma Yan Perry



Student societies

There are a whole host of societies who are involved in the arts – ranging from the drama society to the music society.

To find out more about these societies and who to contact, see: www.lsesu.com/display/lse/Societies