



News & views

New HR Director

The School's new director of Human Resources, Barbara Bush (pictured right), took up her position on 18 August.

Barbara joined the School from the Treasury where she has spent the past three years as senior HR business partner.

Her previous posts have included director of Human Resources at Sussex University and director of Personnel at the School of Oriental and African Studies. She also has senior experience in the private sector, including Lloyds TSB.

Barbara is a fellow of the Chartered Institute of Personnel and Development and holds an MSc in Computation from UMIST and a BA in English Language and Literature from Newcastle University.



Times Higher Education (THE) awards

The research project *How Well Do 'Facts' Travel?*, led by Professor Mary Morgan (pictured below) and sponsored by SAGE, won Highly Commended in the THE Research Project of the Year category. The Staff Development Unit, led by Chris Connelly (pictured right), was shortlisted in the Outstanding Contribution to Leadership Development category.

RESEARCH PROJECT OF THE YEAR

A multidisciplinary team dominated by young researchers has been 'hunting' facts. They have been trying to discover why some seem to lend themselves to misinterpretation or are seen as gossip or embroidered as rumour, while others manage to retain their integrity as they travel.

The project concludes that to survive well, facts need 'good companions' (labels, good associates) striking characteristics or 'functional roles'. Well-travelled facts have differing characteristics according to the academic discipline to which they relate.



OUTSTANDING CONTRIBUTION TO LEADERSHIP DEVELOPMENT

In 1999, the School began a drive to improve management training and develop world-class leaders and managers. This resulted in the establishment of the Staff Development Unit (SDU) which runs an Introduction to Leadership and Management course. This is open to every aspirant manager in the School and has run every term since 1999, attracting 200 participants.

LSE has not neglected the most senior managers, 90 of whom have taken up the services of an in-house Coaching Academy. Senior managers receive 360 degree reviews delivered by external facilitators.

These initiatives helped Central Admin to achieve Investors in People status.

Pro-director Sarah Worthington said: 'It is rewarding to have such public recognition of these LSE activities, which demonstrate refreshing innovation in research and its dissemination, and in staff development.'



Prize for for LSE academic



Internationalisation and Economic Institutions: comparing the European experiences (OUP, 2007), by Professor Mark Thatcher of the Government Department, was awarded the 2008 Charles H Levine memorial book prize by the

International Political Science Association's Research Committee on the Structure of Governance.

Professor Thatcher argues against views that institutional change is driven by external technological and economic forms of internationalisation. Rather, he argues that policy forms of internationalisation are key determinants, because they become part of domestic decision making.

The prize is given in honour of Charles H Levine, who was a distinguished member of the Research Committee and served on the editorial board of its official journal, *Governance*.

Professor Thatcher said: 'I am immensely honoured by this award that recognises the value of comparative and historical research.'

Academics abroad

Professor Bridget Hutter and Dr Jeanette Hofmann (Centre for Analysis and Risk Regulation) presented at the ISA World Forum of Sociology, Barcelona, 5-8 September.

Professor Hutter organised the *Rationalities of Governance and Regulation* stream and gave a keynote talk on *Anticipating Risk and Organising Risk Regulation: governance in public and private spaces*.

ICEF graduation

On 18 September, Dr Laurie Bristow, deputy ambassador to the Russian Federation, hosted the eighth graduation ceremony of the International College of Economics and Finance (ICEF) in Moscow.

ICEF was established in 1997 as a joint venture between LSE and the Higher School of Economics in Moscow, with LSE sharing responsibility for academic management and the appointment of teachers. The college teaches degree programmes in economics, finance, banking and management leading to both Russian and University of London external degrees, and last year launched its own MSc programme.

Of the 79 students graduating this year, no fewer than 24 were awarded first class degrees by the University of London – an unprecedented achievement. Of these, 33 have secured places for graduate study in universities in the west (including eight at LSE) and 28 will pursue further studies in the Russian Federation. ICEF graduate Vladimir Mukharlyamov, who is starting an MSc in Finance and Economics at LSE, has been

awarded the Lord Dahrendorf Scholarship.

The School has played a critical role in the success of the college. LSE academics visit the college to teach, offer advice on teaching methods, participate in research seminars

and to give public lectures. In November, Director Howard Davies will also visit ICEF where he will meet with its directors, teachers and students as well as present a lecture on the current financial crisis.

For more information about ICEF, email Claire Gordon at: lse.icef@lse.ac.uk or go online to: <http://new.hse.ru/C4/ICEF/default.aspx>



Public Lecture

free and unticketed unless otherwise stated

School public lecture

LORD OWEN

In Sickness and In Power

Monday 27 October, 6.30-8pm, Old Theatre

Lord Owen was British foreign secretary (1977- 1979).

School public lecture

BARTON GELLMAN

The Cheney White House: lessons for the next US president

Monday 27 October, 6.30-8pm, Sheikh Zayed Theatre
Barton Gellman is a special projects reporter at *The Washington Post* who shared the 2002 Pulitzer Prize.

LSE Arts Talking Pictures

JOY GERRARD

Joy Gerrard: works for public spaces

Tuesday 28 October, 1-2pm, Shaw Library

Artist Joy Gerrard devised and sculpted the two pieces now installed in the New Academic Building.

LSE Space for Thought

PROFESSOR ANNE-MARIE SLAUGHTER

America's Edge: a global country in a global century

Tuesday 28 October, 6.30-8pm, Sheikh Zayed Theatre
Anne-Marie Slaughter is dean of the Woodrow Wilson School of Public and International Affairs, Princeton University.

Law Department Officers of the Law

PROFESSOR WALTER VAN GERVEN

Legal Scholarship, Legal Practice and Policy: bridging the unbridgeable?

Tuesday 28 October, 6.30-8pm, Hong Kong Theatre
Walter Van Gerven is professor of law at Katholieke Universiteit Leuven and a former advocate-general of the European Court of Justice, Luxembourg.

School public lecture

DAVID MARQUAND

Britain since 1918: the strange career of British democracy

Wednesday 29 October, 6.30-8pm, Sheikh Zayed Theatre

David Marquand is a former Labour MP, chief adviser in the European Commission and a leader writer for *The Guardian*.

School public lecture

SPEAKER: LORD LAWSON

DISCUSSANT: DR SIMON DIETZ

An Appeal to Reason: a cool look at global warming

Wednesday 29 October, 6.30-8pm, Old Theatre
Lord Lawson served as chancellor between 1983 and 1989, prior to this he served as secretary of state for energy. Simon Dietz is deputy director of The

Debates

free and unticketed unless otherwise stated

Health Equity Network/LSE Health

PROFESSOR JULIAN LE GRAND,

PROFESSOR MICHAEL MARMOT

Inequalities in Health in a Global Context

Thursday 30 October, 6.30-8pm, Hong Kong Theatre

Julian Le Grand (pictured right) is Richard Titmuss Professor of Social Policy at LSE. Michael Marmot is professor of epidemiology and public health and director of the International Centre for Health and Society, University College London.

Pre-registration is required for this event. Please email: a.j.oliver@lse.ac.uk



Dharavi Films@LSE/Centre for the Study of Global Governance

RAMCHANDRA KORDE, DR PETER LEE-WRIGHT, PROFESSOR ANJALI MONTEIRO

Urban Spaces On Screen: the challenges of capturing social complexity

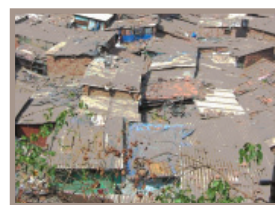
Thursday 30 October, 6.30-8pm, New Theatre

Inspired by two award-winning films (see screening below) about conflict and its resolution in Dharavi, Mumbai, the speakers consider the challenges of representing the nuances of human experience, and the efficacy of film as a tool for community cohesion and creativity.

Ramchandra Korde is co-director of Ekta Sandesh and a neighbourhood peace committee organiser in Dharavi, Mumbai. Peter Lee-Wright is senior lecturer and course convenor of the MA in Television Journalism at Goldsmiths. Anjali Monteiro is a professor at the Centre for Media and Cultural Studies, Tata Institute of Social Sciences (TISS), and co-director of Naata.

Public screening

There will be a screening of the films *Naata* (the Bond) and *Ekta Sandesh* on Friday 31 October, 6-8pm, in the Hong Kong Theatre.



These films explore community attempts to prevent conflict in Asia's largest slum, Dharavi, encompassing issues of identity, community, migrancy and home.

A Q&A session will be held after the screening with Anjali Monteiro and KP Jayasankar, co-directors of *Naata*, and Ramchandra Korde and Waqar Khan, co-directors of *Ekta Sandesh*.

Grantham Research Institute on Climate Change and the Environment.

Centre for Philosophy of Natural and Social Science

PROFESSOR IVOR GRATAN-GUINNESS

Bertrand Russell (1872-1970), Man of Dissent

Wednesday 29 October, 6.30-8pm, Hong Kong Theatre
Ivor Grattan-Guinness is emeritus professor of the history of mathematics and logic at Middlesex University. He has written widely on Russell's logic and philosophy.

School public lecture

HOWARD DAVIES

Central Banking and the Credit Crunch

Thursday 30 October, 6.30-8pm, Sheikh Zayed Theatre

LSE Director Howard Davies is working on a book on this topic to be published in 2009.

noticeboard

New member of BHU

Stewart Fleming, former journalist at the *Financial Times*, joined the Business History Unit as a visitor in September. His area of research is Trans-Atlantic relations in the 1970s and 1980s, with particular reference to the dollar stabilisation crisis of the late 1970s.

PhD Health brochure

LSE Health's PhD programme is part of a wider programme of the Department of Social Policy. Students who specialise in health policy and economics are fully integrated into the life of the Centre's activities. The LSE Health Research Programme brochure outlines current students' PhD research work and their involvement in policy related activities. In the past five years, LSE Health has invested £400,000 to support PhD students. The Department aims to offer and maintain a stimulating and intellectual environment for PhD students, as well as ensuring access to high quality facilities/resources, thus enabling them to produce the highest possible quality research. To download a copy of the brochure, go to: www.lse.ac.uk/collections/LSEHealth/pdf/LSE_Health_research_student.pdf



PhD travel bursaries for India

The India Observatory has two bursaries available to allow interested PhD students to travel to India for their research. Applicants will be required to engage with the Tata Institute of Social Sciences (TISS) in the course of their time in India. Those interested should send their CV and research proposal to the Asia Research Centre Manager at: s.shurtleff@lse.ac.uk The proposal should specify how their time in India will directly impact their research as well as indicate likely research contact at TISS. The deadline is 20 November.

Lunchtime concert

On Thursday 30 October, 1.05pm, in the Shaw Library, Althea Ifeka (oboe) and Dominic Saunders (piano) will perform Benjamin Britten *Temporal Variations* (1936), Jonathan Dove *Music for a Lovelorn Lennanshee* (1993), Johannes Brahms *Klavierstücke* Op.118 nos 1 and 2 for solo piano, Georg Philipp Telemann *Fantasia* No 9 for solo oboe d'amore, and Anton Reicha *Scene for cor Anglais* and piano. Althea Ifeka will perform a wonderfully varied programme on cor Anglais, oboe and oboe d'amore.



Halloween party

The LSE SU Albanian Society (awarded Best Overall Society, 2007-8) is organising a Halloween Party – Albanian Style on Thursday 30 October, 7-11pm, Underground Bar. Featuring Albanian pop, House, etc. Everyone is invited!

Small ads

To rent: spacious flat, modern block, Highgate. Double bedroom, large living room, fully equipped kitchen and bathroom. Ground floor with balcony and bright, sunny aspect. Gas c/h. Internet access. Close to tube. 24-hr buses into London. Short let to 20 December. £175 p/w. Email: jeni@inthepub.demon.co.uk tel: 020 8444 9228/07836 759975.

Rapid transcriptions: an accurate and confidential academic transcription service for over 10 years. Acronyms no problem. Any format: digital recordings, minidisc, tapes, video. Transcripts to suit different budgets. Secure file transfer. Contact Alanna Ivin, tel: 07801 569045, email: Rapid.Transcriptions@pobox.com See: www.rapidtranscriptions.co.uk

Training opportunities at LSE

Academic, personal and professional development courses are available for all LSE staff and students. Courses on offer this month include:			For further details and a full listing of what is available, including booking information, see: www.lse.ac.uk/training		
Tuesday 28 October			For training in:		
<i>Project 2003: managing resources</i>		10am	European information , please email Maria Bell at: m.bell@lse.ac.uk		
Wednesday 29 October			Business Information , please email Barbara Humphries at: b.humphries@lse.ac.uk		
<i>Word 2003:</i>			US Government publications , please email Clive Wilson at: clive.wilson@lse.ac.uk		
<i>long documents – referencing</i>		10am	UK Government publications , please email Ken Gibbons at: k.gibbons@lse.ac.uk		
<i>Moodle Next Steps Training</i> (staff only)		10am			
Thursday 30 October					
<i>PowerPoint 2003:</i>					
<i>images, tables and charts</i>		10am			
<i>Moodle Basics Training</i> (staff only)		10am			
Tuesday 28 October					
<i>Using a Range of Digital Media for Teaching</i> (PhD/staff only)		12.15			
Monday 3 November					
<i>Excel 2003: data analysis</i>		1pm			
<i>Moodle: basics training</i> (staff only)		2pm			

Call for papers

LSE's BIOS Centre is organising an international conference, *Vital Politics III: the politics of the life sciences in an 'age of biological control'* to be held 16-18 September 2009 at the School. The aim of the conference is to provide a comparative and global perspective on present forms of practice in the life sciences. Papers should seek to make empirically based and conceptually innovative contributions to the exploration of the character and genealogy of transformations in health, illness, vitality, pathology and politics. Papers that relate to the themes below are also welcome as well as those which address the topic of the conference but may not align with these themes:

- biological citizenship in a global political economy
- identities and power in a neuro-age
- biopolitics in an age of regenerative and synthetic technologies.

Discretionary bursaries may be available for travel and accommodation. Deadline for abstract submissions is 1 December, see: www.lse.ac.uk/collections/BIOS/events/Vitalpolitics3.htm To attend only, please fill in the Registration Only form also on the website. If you have any queries please contact Victoria Dyas, email: bios@lse.ac.uk

The Cold War Studies Centre at LSE IDEAS, the George Washington University Cold War Group (GWCW), and the Center for Cold War Studies (CCWS), University of California Santa Barbara, are inviting papers for their joint *2009 International Graduate Student Conference on the Cold War*. This will take place at School on April 24-26 2009. The conference is an excellent opportunity for graduate students to present papers and receive critical feedback from peers and experts in the field. A two-page proposal and a brief academic CV (in Word or PDF format) should be submitted to: IDEAS.cwc2009@lse.ac.uk by 25 January 2009 for consideration. Further details can be found at: www.lse.ac.uk/collections/IDEAS/ For further information on submissions, email conference co-ordinator, Artemy Kalinovsky, at: IDEAS.cwc2009@lse.ac.uk

The British Journal of Industrial Relations (BJIR) is planning a conference and special issue in honour of Professor Richard Hyman who is retiring next year. Richard has been one of the most prominent figures in British and European employment



relations research for almost four decades. He has written extensively on trade unions, industrial conflict, and comparative industrial relations with his path-breaking *Understanding European Trade Unionism: between market, class, and society* (2001) bringing these career-long interests together to great effect. *BJIR* is calling for papers which either engage with Richard's own work or would add new value in his areas of interest. Main themes include:

- labour and employment relations theory
- comparative European and international employment relations
- trade union organisation and strategy
- strikes and industrial conflict
- the relevance of history to employment relations research
- Richard Hyman's contributions to employment relations and related fields.

A selection of papers will be chosen for presentation at a special conference to be held at the School in May 2009 and included, subject to *BJIR*'s refereeing process, in a special issue of the journal to be published in 2010. Papers should be submitted via: <http://editorialexpress.com/bjir> which must be recieved by Friday 19 December. To discuss a proposed paper, please email Carola Frege at: c.m.frege@lse.ac.uk or Pat McGovern at: p.mcgovern@lse.ac.uk

Library news

ATHENS PASSWORD REMINDER
The 'Athens' password is no longer required for off-campus access to electronic resources as it is due to be discontinued in the near future. Instead, you just need to use your LSE login (network username and password) to access Library resources off-campus. Always use the Library gateways to access resources – via the electronic resources page available at: www.lse.ac.uk/library/eelib.htm

- To access your chosen ejournals off-campus please continue to access via the Ejournals portal where you will be prompted for your LSE login.
- To access all other types of eresources, select via the options on the electronic resources page, then look for the 'Institutional login' or 'UK federation' option.

NOTE: you may still be offered an Athens logon option. This is because some universities are continuing to use Athens in the short term while they prepare to move to another system.

Please use your LSE login instead.
For more information see: www.lse.ac.uk/library/passwords/passwordfaqs.htm
If you experience any problems accessing resources or have any queries, please email: library.password.enquiries@lse.ac.uk



New MSc in accounting

The Department of Accounting has launched an exciting new MSc programme: Accounting, Organisations and Institutions and is built explicitly on the research expertise for which the Department has an unrivalled international reputation. Accounting is now an influential technology in almost all institutional settings and a pervasive instrument of institutional governance. It is implicated in decision-making, performance management, organisational control, risk management and institutional evaluation and assessment. Moreover, accounting extends its reach into government agencies, regulatory bodies, and management consultancies, as well as into an increasing number of assurance agencies operating in transnational fields much broader than those traditionally associated with financial auditing and the preparation of accounts. In short, accounting is much more than bookkeeping. This exciting masters programme will seek to understand the many faces of accounting and accountants, and their role in shaping organisations and institutions. This new course differs from others offered by the Department in that it does not require prior knowledge of accounting, rather it offers an opportunity for those who want to understand more about the multiple roles of accounting, whether they wish to become accountants or not. For further information, please see: www.lse.ac.uk/collections/accounting/news/newmscprogramme.htm

1-2.30pm. R405. Urban and Regional Economics seminar. Tony Champion: *The Escalator Region Hypothesis and the Regional Cities of England: a research agenda.*

Monday 3 November
5.30pm. H615. BHU seminar. Peter Scott and Anna Spadavecchia: *Did the Introduction of the 48-Hour Week damage Britain's Relative Competitiveness?*

Diary

Open to all unless otherwise stated

Tuesday 28 October
12.45-2pm. R405. CEP Labour Market workshop. Fabian Waldinger: *Peer Effects in Science: Evidence from the dismissal of scientists in Nazi Germany.*
1pm. M101. CsGG research seminar. Maximillian Hänska-Ahy: *Civil Society, Communication and Iran.*
5-6.30pm. R405. CEP/LSE Money-Macro workshop. Ellen McGrattan: *Technology Capital and the Transition of Developing Economies.*
6-7.30pm. A607. Anthropology of Africa seminar. Deborah James: *Rights, Responsibilities and 'Cultural Citizenship' in South African Land Reform.*

Wednesday 29 October
12.30-2pm. R405. CEP/LSE International Economics seminar. Udo Kreickemeier: *Fairness, Trade, and Inequality.*
5.30-7pm. T206. Choice Group seminar. Roman Frigg: *Models and Fiction.*

Friday 31 October
10.30am-12.30pm. Anthropological Theory research seminar. Patrick Eisenlohr: *Technologies of the Spirit: devotional Islam, sound reproduction, and the dialectics of mediation and immediacy in Mauritius.*