



# News & views

## World Cup bid 2018



Lord Nicholas Stern, IG Patel Professor of Economics and Government and chair of the Grantham Research Institute on Climate Change and the Environment, has become one of the latest vice presidents of the bid to bring the World Cup tournament to England in 2018.

Lord Stern joins a prestigious list of vice presidents who will support the Executive Board in an

ambassadorial role: David Beckham; former international John Barnes; England National Women's coach, Hope Powell; England

coach Fabio Capello; Geoff Thompson, former FA Chairman and member of FIFA's Executive Committee; Peter Kenyon, chief executive, Chelsea Football Club; Gordon Taylor, Honorary President, FIFPro; Sir Terry Leahy, chief executive, Tesco PLC.

Lord Stern said: 'We can make this the most powerful force for the international development of sport, in poor and rich nations, that the world has ever seen. And in so doing, we can make it the greenest.

'For example, we can keep greenhouse gas emissions to a minimum through our organisation of transport in the UK. And we can offset the inevitable emissions from aircraft via the best of economic development programmes.

'The feast of football must be shared and it must be kind to the planet. It is an honour to be part of a bid that can deliver a festival for the UK, a leap forward for world football and a major contribution to the world's economic development.'

cheerful confidence of her group, who ultimately refuse to be tyrannised and leave.

To download the report, see: [www.lse.ac.uk/collections/media@lse/pdf/EWP13\\_final.pdf](http://www.lse.ac.uk/collections/media@lse/pdf/EWP13_final.pdf)

**'Life after Death' (in *Journal of Evolutionary Psychology*, Sept 2008), by Paul Matthews and Rebecca Sear**

By testing whether 'mortality priming' results in a marked increased desire for more children, this research found that fear of death makes men want more children.

The study used 872 LSE students randomly divided into two groups. One group was asked 11 questions on death and dying before being asked several questions about having children. The second group was asked the questions on death and dying after the questions on children.

The number of children that male participants in the mortality primed group wanted was ten per cent higher than the number of children that male participants wanted in the control group, whilst there was virtually no effect for female participants.

Lead researcher Paul Mathews said: 'This study shows that what matters is not actual mortality but perceived mortality. For example, in developing countries, urbanisation and increasing population densities might actually make people think they and their children are at greater risk, even if the reverse is true. This, in turn could have important consequences for the maintenance of high fertility.

To download a copy of the report, see: [www.lse.ac.uk/collections/pressAndInformationOffice/PDF/LifeAfterDeath.pdf](http://www.lse.ac.uk/collections/pressAndInformationOffice/PDF/LifeAfterDeath.pdf)



## Reshaping the world



LSE had a strong presence at the largest ever brainstorming event on the Global Agenda, held in Dubai, 7-9 November which brought together 700 of the world's top thought leaders from business, government, academia and civil society.

Participants concluded that the world needs to examine the basic operating systems that drive its economies, markets and societies. It must aim for a 'fundamental reboot' to establish a fresh platform based on renewed confidence and trust, and on sustainability,

responsibility and ethical principles.

Members of LSE who participated on the various panels included: LSE Director, Howard Davies; Bridget Hutter (above), director of the Centre for Analysis of Risk and Regulation; David Held, director of the Centre for the Study of Global Governance; Conor Gearty, director of the Centre for Human Rights; Mary Kaldor, programme director of the Centre for the Study of Global Governance; and James Putzel, director of the Crisis States Reseach Centre.

To read about the event in detail, see: [www.weforum.org/en/index.htm](http://www.weforum.org/en/index.htm)

## UN elects new judge

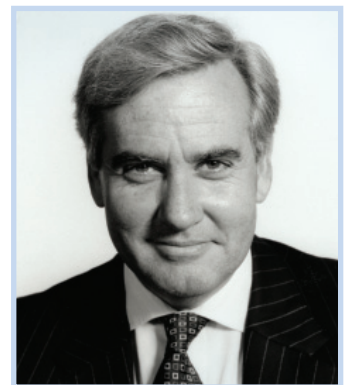
Professor Christopher Greenwood, Law, has been elected a judge at the International Court of Justice (ICJ). He will serve a nine-year term hearing cases that range from territorial disputes and allegations of racial discrimination to genocide and environmental protection.

Professor Greenwood, an authority in international law who has taught at LSE for 12 years, is also a practising barrister and has been a QC since 1999. He has appeared as an advocate in several cases at the ICJ. He said: 'The ICJ is sometimes described as 'the world's court' and I think that's a good description.'

New judges have to be elected by a majority in both the Security Council and the General Assembly of the United Nations and this time, five judges were elected from eight candidates. Professor Greenwood came second in the poll in the General assembly, with 157 votes, and was the only candidate to obtain all 15 votes in the Security Council.

Professor Greenwood will leave LSE to take up his appointment in the new year. He follows in the footsteps of Rosalyn Higgins, the current president of ICJ, who was Professor Greenwood's predecessor as Professor of International Law at LSE.

For full details, see: [www.icj-cij.org/presscom/index.php?pr=2088&pt=1&p1=6&p2=1&PHPSESSID=8f5529f1c48d94879c3b004719e6e722](http://www.icj-cij.org/presscom/index.php?pr=2088&pt=1&p1=6&p2=1&PHPSESSID=8f5529f1c48d94879c3b004719e6e722)



## Research from LSE



**'I Can't Believe You Just Said That': figuring gender and sexuality in Little Britain** by Deborah Finding, PhD, Gender Institute

This study, suggests that far from being ironic or 'alternative', *Little*

*Britain* has more in common with Bernard Manning than the subversive comedians who followed in his wake.

The research applies a technique called figurative analysis to the comedy's characters – showing how their physical traits are often projections of 'nasty ideas' rooted in fears about the working class, homosexuals or other less powerful groups.

For example, in laughing at Vicky Pollard – a fat, chain-smoking, single mother – we are expressing our fear and hatred of a group by projecting onto her stereotypical body the perceived qualities of all working-class single mothers – feckless, stupid and promiscuous.

Even Daffyd, the self-proclaimed 'only gay in the village', is a character who connects the idea of being homosexual with being ridiculous and therefore relies on 'mainstream' fears about gayness, despite the fact that Daffyd is the creation of comedian Matt Lucas who is himself gay.

Finding said: '*Little Britain* is the comedy equivalent of junk food. It is clear that... we are laughing at not only the figures on screen but at entire groups of people whom they come to represent.'

However, the study does pick out some sketches in which the joke is on the apparently powerful – including the bullying weight-loss group leader Marjorie Dawes. Here, the comedy lies in Marjorie's own racism, hypocrisy and self-disgust which is at odds with the

## Public Lecture

free and unticketed unless otherwise stated

**Ralph Miliband: Sustainability, Social Justice, and the Global Order**

PROFESSORS LORD MEGHNAD DESAI, DAVID HARVEY, LEO PANITCH

**Revisiting Marx: is Marxism still relevant?**

Tuesday 18 November, 6.30-8pm, Sheikh Zayed Theatre  
Meghnad Desai is emeritus professor of economics at LSE. David Harvey is professor of anthropology at the Graduate Center of the City University of New York. Leo Panitch is professor of political science at York University, Ontario.

**Urban Age**

PETER HENDY

**The Politics of Mobility**

Tuesday 18 November, 6.30-8pm, Old Theatre  
Peter Hendy is commissioner of Transport for London.

**European Institute; Sciences Po, Paris; French Embassy: Franco-British Europe Dialogue**

DR KAROLINE POSTEL VINAY

**The European Invention of 'Globality' in International Relations**

Tuesday 18 November, 6.30-8pm, The Wolfson Theatre  
Karoline Postel-Vinay is research director at CERI-Sciences Po, Paris.

**LSE IDEAS**

LORD PATTEN

**What Next? Surviving the Twenty-first Century**

Wednesday 19 November, 6.30-8pm, Sheikh Zayed Theatre  
Lord Patten is the author of *What Next? Surviving the Twenty-first Century*.

**FT Business - LSE European Institute The Future of Europe in association with LSESU Finnish Society**

ALEXANDER STUBB

Thursday 20 November, 6.30-8pm, Old Theatre  
Alexander Stubb, Finland's foreign minister and current chairman of the Organisation for Security and Co-operation in Europe (OSCE) is a graduate of the LSE. He became minister for Foreign Affairs in April this year. Before that he served for four years as a member of the European Parliament.

**LSE Space for Thought**

PROFESSOR BILL MCGUIRE

**Seven Years to Save the Planet?**

Thursday 20 November, 6.30-8pm, Sheikh Zayed Theatre  
Bill McGuire is professor of geophysical hazards at University College London and director of the University's Benfield UCL Hazard Research Centre.

**BJIR Annual Lecture 2008**

PROFESSOR KATHLEEN THELEN

**Institutional Change in Advanced Political Economies**

Thursday 20 November, 6.30-8pm, The Wolfson Theatre

Kathleen Thelen is Payson S Wild Professor of Political Science at Northwestern University.

**LSE Arts 'Revolution Time'**

COLIN GRANT

**Marcus Garvey: demagogue or messiah?**

Thursday 20 November, 7pm, Shaw Library  
Colin Grant has written and produced numerous plays including *The Clinic*.

**LSE Space for Thought**

PROFESSOR PETER DONNELLY

**The Genetics of Common Human Diseases: recent discoveries and their implications**

Monday 24 November, 6.30-8pm, Sheikh Zayed Theatre

Peter Donnelly is director of the Wellcome Trust Centre for Human Genetics and professor of statistical science at the University of Oxford.

## Director's dialogue

**Howard Davies in Conversation with Cherie Blair**

Wednesday 3 December, 6.45-7.45pm, Sheikh Zayed Theatre

Cherie Blair will talk to Howard Davies about her autobiography *Speaking for Myself*.

Alumna Cherie Blair is a barrister and QC, and a governor and honorary fellow of the School. Free but ticketed. See: [www.lse.ac.uk/events](http://www.lse.ac.uk/events)

## Debates

free and unticketed unless otherwise stated

**CPNSS: Voting Power in Practice**

PROFESSORS ARIEL BUIRA AND DENNIS LEECH

**Reforming the voting systems of the IMF and World Bank**

Thursday 20 November, 6.30-8pm, Hong Kong Theatre

Ariel Buira will argue for radical voting reforms to achieve democratic legitimacy and effectiveness; Dennis Leech will present voting power analyses of recent reform proposals.

Ariel Buira is a member of the Mexican Council on Foreign Relations and former executive director of the International Monetary Fund. Dennis Leech is professor of economics, University of Warwick and co-director, of Voting Power and Procedures, CPNSS.

Sponsored by The Leverhulme Trust.



noticeboard

Max Plank fellowships

The Max Planck Institute for the Study of Societies is calling for applications for their postdoctoral fellowships. The fellowships will start in October 2009 and will be awarded for one year. The programme is open to researchers from a variety of social science disciplines, in particular, but not exclusively, sociology and political science. The deadline for applications is 31 January 2009. For more information see: www.mpihg.de/aktuelles/ausschreibungen\_en.asp#Post-Doc

Surprise surprise

Vetran comedian Robin Williams made a surprise appearance at the Chuckle Club on Saturday 8 November where he performed his routine as a warm-up for his West End appearances at the Gielgud Theatre, 13 and 14 November.

Lunchtime concert

Anna-Liisa Bezrodny (violin) and David Cohen (cello) will be performing on Thursday 20 November, 1.05pm, in the Shaw Library. Their programme comprises Kodaly Sonata for violin and cello, Handel/Halvorsen, Passacaglia. Anna-Liisa Bezrodny is a superb violinist, international performer, broadcaster and prizewinner. David Cohen is a soloist and principal cellist of The Philharmonia.



Evening piano duo recital

On Wednesday 26 November, 7.30pm, in the Shaw Library, The outstanding Abbott-O’Gorman piano duo, comprising Jocely Abbott and Laura O’Gorman, will perform major piano duo classics by Brahms, Schubert, Gershwin, Bernstein and Ravel. Tickets cost £4 for LSE staff, students and alumni and £12 for members of the public. To request a ticket visit: www.lse.ac.uk/events or email: events@lse.ac.uk

Small ads

**Short-term rental:** charming flat with balcony and a view of the Tour Eiffel in the lively Batignolles area in the 17th arr. Tastefully decorated, fully furnished, sleeps four. 100-150 EUR daily. Minimum stay of three days preferred. For more information see: http://marcella.deluca.free.fr/flat.html

**Wanted:** north or central London flat for LSE academic visitor, mid-December 2008 to early January until June/July 2009, furnished, suitable for a couple. Please contact Dr Ben Wisner, email: bwisner@igc.org copy to Dr Sonia Kruks, email: sonia.kruks@oberlin.edu or phone 0191 3343397.

**Rapid transcriptions:** an accurate and confidential academic transcription service for over ten years. Acronyms no problem. Any format: digital recordings, minidisc, tapes, video. Transcripts to suit different budgets. Secure file transfer. Contact Alanna Ivin, tel: 07801 569045, email: Rapid.Transcriptions@pobox.com See: www.rapidtranscriptions.co.uk

Training opportunities at LSE

Academic, personal and professional development courses are available for all LSE staff and students. Courses on offer this month include:			
<b>Tuesday 18 November</b>			
Word 2003: essential formatting skills	2pm	HTML: formatting and layout	2pm
PowerPoint 2003: creating a presentation	2pm		
<b>Tuesday 18 November</b>		<b>Monday 24 November</b>	
Moodle: basics training (staff)	10am	Excel 2003: shortcuts and basic formulas	10am
Keeping Up To Date: tools and tips for your research	12pm		
<b>Wednesday 19 November</b>		<b>For further details</b> and a full listing of what is available, including booking information, see: <b>www.lse.ac.uk/training</b>	
FrontPage 2003: creating a personal website	10am		
<b>Thursday 20 November</b>		<b>For training in:</b>	
RDP 2: planning a publishing strategy (staff)	11am	<b>European information</b> , please email Maria Bell at: m.bell@lse.ac.uk	
Managing Internet Resources: introduction to social bookmarking	12pm	<b>Business information</b> , please email Barbara Humphries at: b.humphries@lse.ac.uk	
Staff IT Training Workshop	2pm	<b>US Government publications</b> , please email Clive Wilson at: clive.wilson@lse.ac.uk	
<b>Friday 21 November</b>		<b>UK Government publications</b> , please email Ken Gibbons at: k.gibbons@lse.ac.uk	
Blogging for Beginners: using blogs to promote your research	12pm		

External Study reception

Professor Janet Hartley presented this year’s External Study Scholarships for masters level at a reception held on Wednesday 5 November. Adem Atmaz was teaching in Japan while he studied for the University of London External System BSc Mathematics and Economics. On the basis of his outstanding degree results he was awarded a full scholarship to study at the School. He was also jointly awarded the annual Sir Edward Stern Prize with a candidate from Queen Mary which is given to the best candidate(s) who offer a subject of commercial interest in the final examination of a University of London first degree. Adem gained one of ten places on the new MSC Financial Mathematics programme which had over six hundred applications. Vladimir Mukharlyamov studied at ICEF in Moscow and was awarded two scholarships to study the MSc Finance and Economics at LSE: the Dahrendorf Scholarship and an External Study Scholarship. He was jointly awarded the annual Gerstenberg Memorial Prize in Political Economy with a candidate from Birkbeck. This prize is given to the best candidate(s) who have taken a University of London first degree in which at least half the papers taken are in economics. The reception was also the occasion to say thank you to Professor Susan Dev on her retirement from the External System. Professor Dev has been involved with External Study for more than 30 years, and has been chairman of the Board of Examiners for over 16 years. She presented students with Academic Achievement Awards for overall performance. This year, the University of London External System

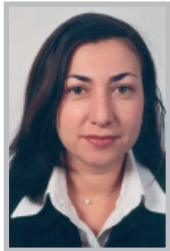


L-r: Rosemary Gosling (director, LSE External Study), Adem Atmaz, Janet Hartley, Vladimir Mukharlyamov, Susan Dev

also awarded prizes to commemorate the 150th year of its operation. Vladimir and Adem were two of the 14 students on the Economics, Management Finance and Social Sciences programmes who were awarded these prestigious prizes. Cameron Paige who is now studying an MSC in Sociology at LSE, was awarded one of these anniversary prizes for her overall performance in the BSc Sociology.

Academics abroad

**Dr Armine Ishkanian**, Centre for Civil Society, presented a paper entitled *The Sustainability of Civil Society Organisations: issues and challenges* at the fifth Annual DECIM Roundtable of Public and Private Donor Agencies Supporting Civil Society Development. The event, organised by the World Bank and the European Commission, was held in Paris, 28-29 October.



**Dr David Lane**, OR, gave the opening plenary talk, *On The Linkage Between Operational Research and System Dynamics*, in Frankfurt on 13 November at a joint meeting of the Gemeinsamen Fachtagung der Gesellschaft für Operations Research and der Deutschen Gesellschaft für System Dynamics.

**Mike Power**, CARR, will be giving a paper on *Organisations and the Logic of Auditability* at the 20th Anniversary of SCANCORE conference, Stanford University, California, 21-23 November.



**Professor Nikolas Rose**, BIOS, is to speak at the *Global Minds: subjectivity and the new regimes of knowledge in the 21st century* conference being held at Aarhus University, Denmark, 28-29 November. Professor Rose’s lecture, *The Social Brain* discusses recent developments in the neurosciences that appear to overcome neuro-reductionism.



Media bites



‘Premium fares on the railway are already high enough to stimulate growth in air transport. If you take on all the difficulties of airlines by making it reservation only and then charge twice as much, it does not make sense.’ **Tony Travers**, *The Guardian*, 1/11/08

‘I think all of the governments are uncomfortably aware that they have got very, very nervous electorates... people like Sarkozy, in particular, and Brown know that their future depends on it appearing that they are responding adequately to this crisis.’ **Howard Davies**, *Washington Post*, 2/11/08

‘The immediate effect [of Britain using anti-terrorism laws to freeze its assets in a failing Icelandic bank] was to trigger an almost complete freeze on any banking transactions between Iceland and abroad.’ **Jon Danielsson**, *Skynews*, 2/11/08

‘Storytelling is one of humanity’s oldest methods of possessing information and representing reality. The stories, poems and plays we categorise as literary fiction were once accepted in much the same way that scientific discourse is received as authoritative today.’ **David Lewis**, *Hero.ac.uk*, 7/11/08

‘I predict that men will continue to dominate in the workforce and public life while women will continue to dominate in family life, even in the absence of sex discrimination, because there are some residual differences in tastes, values and lifestyle choices that have a cumulative impact. So why do feminists continue to demand a strengthening of gender equality laws? Largely because feminists continue to manufacture myths about women’s oppression.’ **Catherine Hakim**, *Daily Mail*, 8/11/08

Diary

Open to all unless otherwise stated

<b>Tuesday 18 November</b> <b>12.45-2pm.</b> R405. CEP Labour Market workshop. Olmo Silva: <i>Unobservables and Matching as an Evaluation Method: Evidence from an education intervention.</i> <b>1pm.</b> M101. CsGG research seminar. Martin Albrow: <i>Finding Principles for Global Governance.</i> <b>Wednesday 19 November</b> <b>4-6pm.</b> A607. Anthropology of South Asia seminar. Anna Laine: <i>In Conversation with the Kolam Practice: home making and artistic experiences among women in Tamilnadu, India.</i> <b>4.30-6pm.</b> R505. Social Exclusion seminar. Polly Toynbee: <i>Unjust Rewards: inequality and the rich.</i> <b>5.15pm.</b> J116. Cañada Blanch and Department of Spanish and Spanish American Studies, King’s College seminar. Mike Thompson: <i>Theatre Censorship in Franco’s Spain.</i>	<b>Thursday 20 November</b> <b>2-4pm.</b> A607. Anthropology of East and Inner Asia seminar. Hyun-gwi Park: <i>Fractal Korea in East Asia with the Case of Korean Diasporas in the Russian Far East.</i> <b>Friday 21 November</b> <b>4pm.</b> Hong Kong Theatre. DESTIN Friday visiting speaker seminar. Cathy Campbell: <i>Political Will to Implement Effective Social Development Programmes? Participatory HIV Prevention Amongst Sex Workers in South Africa.</i> <b>10.30am-12.30pm.</b> Anthropological Theory research seminar. Daniel Washburn: <i>Religious Experience and the Process of Enculturation in Post-Soviet Russia.</i> <b>6pm.</b> NAB 1.07. LSE/Sciences Po Languages and E-learning seminar. Olivier Duhamel: <i>Why E-learning at Sciences Po?</i>
---	---