

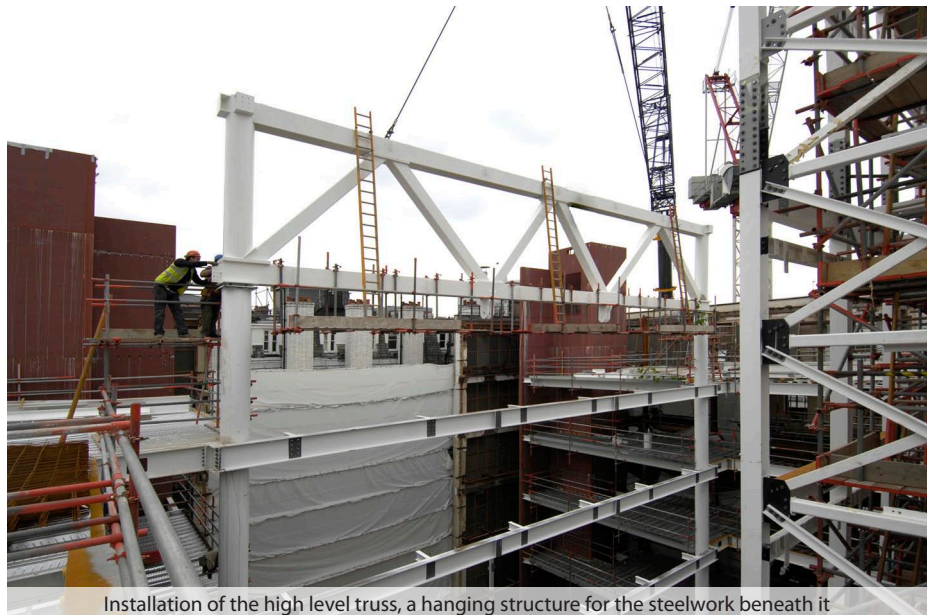
A Message from the Site Team

Welcome to Issue 2 of our newsletter for the New Academic Building at 24 Kingsway.

We are producing a newsletter to keep you, our neighbours, informed of important activities. This current issue details the work taking place between June and August 2007.

We're aware that construction work is disruptive but you'll be glad to know that the noisy and dusty activities are mostly complete. Here's our number if you need to speak to us directly.

☎ 020 7831 1984



Installation of the high level truss, a hanging structure for the steelwork beneath it

Commencement of Concrete and Steel

Work started on the New Academic Building in Summer 2006. With a year or so of construction remaining, we will convert the existing Edwardian building into a £46m modern teaching environment fit for a world-class institution. The facility will enable LSE to more than double its teaching space when it opens in Autumn 2008.

Since our last update in January, site works have progressed to schedule. Demolition of the existing structure was completed on time allowing us to construct the new build elements.

Some of you may have witnessed the craning-in of large red steel boxes. These were in fact two lift shafts arriving in prefabricated sections (see photo opposite). Each lift shaft stands eleven storeys high and both were installed in just three weeks. The project is one of the first in the UK to use this technology and has been featured on the front page of *Contract Journal* magazine.

We have also been building the structure for the 450-seat basement

lecture theatre. On the weekend of the 16th and 17th of March we lowered into position eight precast concrete beams, each measuring 18m long and weighing 17 tonnes. A huge mobile crane lifted the beams into position and we liaised with Westminster Council and Metropolitan Police to ensure that road closures and diversions were established to allow the crane to arrive on site.

Finally during this busy period, the steel frame has been erected up to roof level. A 15 tonne truss has been lifted into position and will be used to support the hanging sections of the steel structure.

"The New Academic Building will provide LSE with an exemplary academic environment, which promotes learning and social interaction. Subtle interventions in the existing facade and the vibrant new forecourt will enhance LSE's presence and connect with the surrounding urban context of Lincoln's Inn Fields and Kingsway".

Neven Sidor
Director in Charge, Grimshaw



One of the prefabricated lift shafts

Summary Programme of Scheduled Works

Name	2007																											
	June							July							August							September						
	4	11	18	25	2	9	16	23	30	6	13	20	27	3	10	17	24	1	8	15	22	29	5	12	19	26	3	10
Steel Frame																												
Concreting Works																												
Screed and Blockwork																												
Mechanical and Electrical Installations																												
Works to electrical Sub station in Kingsway																												
External Facade and Curtain Walling																												



Progress Report

General Statement

Demolition complete and prefabricated lift cores erected. Concrete walls and beams to basement lecture theatre constructed. Steelwork erection and concreting of floors underway.

Steel Frame – to June 2007

The steel erection has been progressing slightly faster than programmed. Steelwork is now up to roof level and the top truss has been lifted into position, allowing the hanging structure to be constructed below. Target completion end of June 2007.

Concreting Works – to July 2007

Floors and walls cast at basement level; precast beams lifted into position. Waterproof screed laid at basement level allowing blockwork to begin; other waterproofing works underway. Ground Floor concrete slab poured. Metal decking for upper levels being prepared in advance of concreting.

Mechanical and Electrical Installations – June 2007 to Summer 2008

Mechanical and Electrical subcontractor appointed; detailed design is being produced with installations due to start in June 2007.

External Façade and Curtain Walling – July 2007 to October 2007

Externally, the works to the lead-covered dormer windows and slate mansard roof have finished. Cleaning and stone repairs to the existing façade are progressing and openings have been extended for new doorways. The lightwell curtain walling is due to start in July 2007.

Building watertight October 2007.



Installation of the precast beams forming the roof of the basement lecture theatre