

A Message from the Site Team

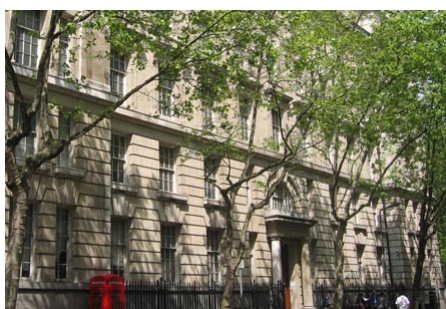
Welcome to our first newsletter for the New Academic Building at 24 Kingsway.

We are producing a quarterly newsletter to discuss our progress on site and to keep you informed of any important activities. This current issue details the work taking place between January and March 2007.

We're aware that construction work can be a little disruptive so we thank you for your continuing patience. Here's our contact number if you need to speak to us directly. ☎020 7831 1984



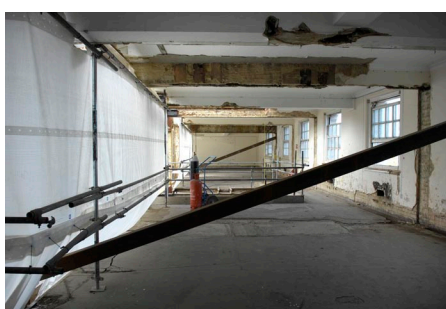
Making Good Progress at 24 Kingsway



Work started on the New Academic Building in Summer 2006. Over the next eighteen months we will convert the existing Edwardian building into a £46m modern teaching environment fit for a world-class institution. The facility will enable LSE to more than double its teaching space when it opens in Autumn 2008.

The project approach is very 'green' with the team required to deliver high levels of environmental sustainability.

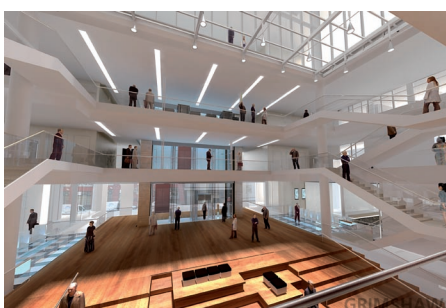
Opportunities for daylighting and natural ventilation are maximised including the use of openable windows. Solar hot water collectors and ground water cooling via 100m deep boreholes will reduce energy consumption and photovoltaic panels are planned to provide additional power. Existing building materials are salvaged and recycled and a significant proportion of the existing building is reused. The facility is targeting an 'Excellent' rating under the BREEAM environmental assessment system.



Grimshaw Architects have developed a dramatic scheme that involves a complete remodelling of the existing building; formally the Public Trust Office built in 1912. It is an eight-storey U-shaped structure incorporating an atrium, roof pavilion and a revamped forecourt area. The scheme will provide four new lecture theatres, 18 classrooms and research facilities with academic offices on the upper floors.

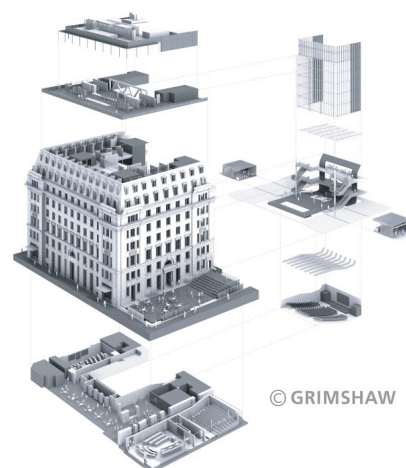
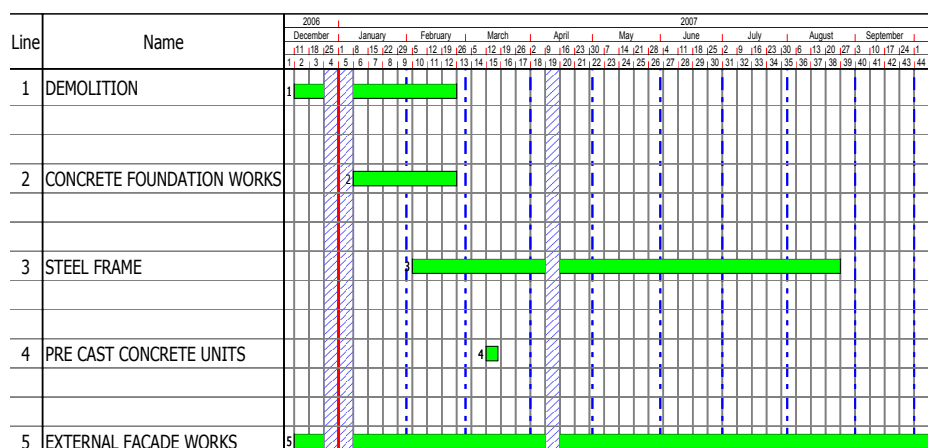
"We are delighted to be working on this prestigious project. It gives us the opportunity to demonstrate our skills in integrating modern construction processes within an existing Edwardian structure. We'll aim to ensure our local neighbours are kept informed of our works at all times, causing as little disruption as possible."

Cliff Thomas
Divisional Director, Osborne London Region



The single most important change offered by the New Academic Building is to unlock the very tight and overcrowded centre of the campus, giving it breathing space and letting departments with similar interests come together.

Summary Programme of Scheduled Works



Progress Report

General Statement

The steel frame is due to complete at the end of July 2007 allowing the external envelope works to commence including the atrium glazing. Once water-tight we will move inside the building to start the internal fit-out.

Demolition – to February 2007

The main demolition works to the building will be coming to an end in early February 2007. This will see a drop in noise to levels normally associated with general construction activities.

Concrete Foundation Works – January to March 2007

Upon completion of the demolition works the next operation will be the concreting of the piled foundations and structural walls in the basement area. The walls form the new basement lecture theatre and part of the structure supporting the Ground Floor. This work will involve the use of a crane to skip concrete in from Lincolns Inn Fields to the foundations and walls.

Steel Frame – February to July 2007

The steelwork for the new frame will be erected starting February 2007. An important activity will be the installation of the prefabricated steel lift shafts. This is a new method that has only been trialled on a few projects in the UK.

The are additionally some heavy steel sections which will require the use of a large mobile crane to lift into position. The crane will be situated in Lincolns Inn Fields and the lifts carried out over the weekend to minimise disruption.

Concrete Planks to Lecture Theatre – March 2007

During March 2007 we will crane into position eight 17 tonne concrete planks forming the ceiling of the new lecture theatre. We will need to use a 500 tonne mobile crane for this activity. The appropriate road closure notices will be posted by LB Camden early in the New Year and we have scheduled the activity for the weekend to minimise disruption.

External Facade – December 2006 to August 2007

The perimeter scaffold has been completed allowing us to clean the existing portland stone facade. Once cleaned, new windows will be installed in the existing openings. All this work will be carried out from within the sheeted scaffold.

