



16th/17th C Bartman or Bellarmine bottle tops with decorative faces



Worked bone comb, possibly of Anglo Saxon date



19th C Ink bottle with spout for dispensing ink into inkwells



Globular headed Roman hair pin

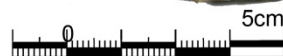


Most of a finely worked bone spoon, probably late medieval in date



19th C Stoneware bottles including a complete ink bottle and smaller bottle base fragments.

Anglo Saxon loom weight, used in textile production.



A selection of the animal bone found on site, which includes waste from butchery and bone working.

