



## RSHP Wins Planning for Massive LSE Redevelopment

**18 MAR**  
2015

by Karissa Rosenfield

 ArchDaily Architecture News  
 London London School of  
 Economics LSE Rogers Stirk  
 Harbour + Partners UK

10

Like

50

Tweet

2

8+1

12



© RSHP

The Westminster City Council has granted [Rogers Stirk Harbour + Partners](#) planning permission for their competition-winning scheme to redevelop part of [The London School of Economics and Political Science \(LSE\) campus](#). The largest project in the school's 120-year history, the "Center Building Redevelopment" plan will replace an existing cluster of LSE buildings along Houghton Street – Clare Market, The Anchorage, the East Building and part of St. Clements – with a modernized, sustainable and multifunctional academic building.



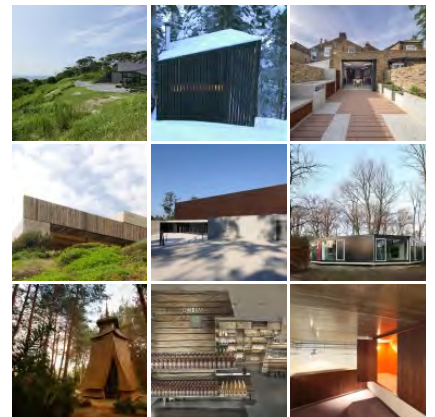
© RSHP

Director of Estates Julian Robinson said: "This is a major milestone in our ambitious program of improving facilities and accommodation at LSE. We are a world class

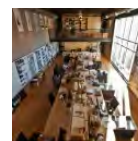
 Studio Apartments  
 Reykjavik


Book Now

### SELECTED BUILDINGS

[MORE PROJECTS ▸](#)

### MOST VISITED OF THE WEEK

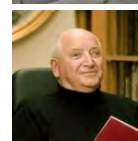


12 Mar 2015

 21 Ways Architects Can  
 Work Smarter, Not  
 Harder


13 Mar 2015

25 Green / Luciano Pia



12 Mar 2015

 Michael Graves Dies at  
 80

16 Mar 2015

Las Vegas vs The Landscape:

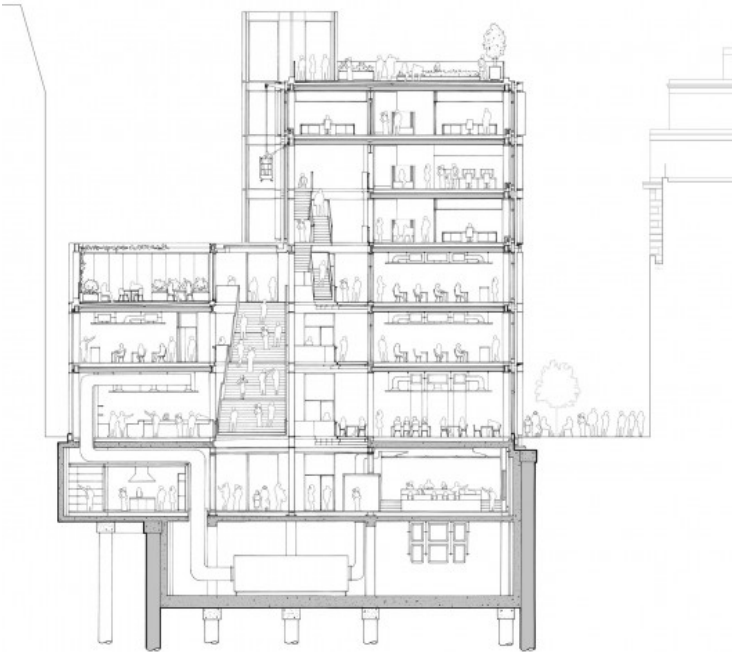
university and the Centre Buildings Redevelopment will provide a new building and public spaces which will reflect this. Its sustainable design will complement and enhance our surroundings while still being uniquely identifiable as LSE."



Photographer Michael Light Exposes the Terraforming of the American Dream



12 Mar 2015  
Renovation of Split-Level Hair Salon & Residential / HAO Design studio



© RSHP

Park Royal Hotel  
Adana

Book from | £ 125

Book Now

Demolition will begin this summer, and completion is scheduled for late 2018. RSHP's £120 million scheme, which was chosen ahead of a [competition shortlist of five international teams](#), aims to animate the street with a new public square and the integration of public programs at its lower levels, including a restaurant, auditorium and large lecture theaters.



© RSHP



© RSHP



© RSHP



© RSHP