

Friday 06 March 2015

Rogers Stirk Harbour scoops £90m LSE project

18 November 2013 | By [Elizabeth Hopkirk](#)

Architect beats OMA, Hopkins, Heneghan Peng and Grafton to land prestige project

Rogers Stirk Harbour & Partners has triumphed in the RIBA contest to design a £90 million scheme for the London School of Economics.



RSHP's winning proposal for the LSE's Global Centre for Social Sciences – Team E

The architect beat OMA, Hopkins, Heneghan Peng and Grafton to win the job of designing the LSE's new Global Centre for Social Sciences in central London.

The announcement comes less than a fortnight after the jury failed to come to a decision because there was no one outstanding scheme.

Director of estates Julian Robinson said both the LSE and the finalists needed to do more work before a winner could be chosen.



RSHP's winning proposal for the LSE's Global Centre for Social Sciences – Team E

He admitted the brief was extremely challenging since it involves the need to demolish and redevelop a number of existing buildings on Houghton Street and Clare Market in the heart of the Aldwych campus.

Announcing the winner he said each proposal contained “innovative design response”.

“We intend this to be a seminal piece of university architecture so it was important we took time to get the decision right. The RSHP proposal goes beyond the school’s brief by giving us a new public square in the heart of the campus,” he said.

“We are looking forward to developing the designs with the RSHP team and are confident that the result will produce a highly sustainable and outstanding piece of architecture.”

LSE director and jury chair Craig Calhoun said: “They have designed beautiful, dynamic buildings around the world and they offered an elegant, thoughtful submission to this competition. RSHP grasped that this would be a building at once for the university and for the city, an enhancement to public as well as academic space.”

He said the practice won the public vote “by an overwhelming margin” and this formed part of the jury’s deliberations.

Ivan Harbour, the senior RSHP partner leading the project, said: “Our new addition to the campus will enrich the urban context and reflect the essence of the LSE.”



Follow @bdonline

50.6K followers

Like

0

Readers' comments (3)

e

[sunshine](#) | 19 November 2013 6:24 pm

These look like design proposals to at least Stage 2 have LSE paid fees to all the teams which submitted proposals?

[Henry Luker](#) | 19 November 2013 10:26 pm

I particularly like the image of the chap struggling to get the blind down on the south facing floor to ceiling glazing! Do the windows open?



[urbansurgery](#) | 20 November 2013 10:04 am

What irony when the LSE goes over its budget?

bdproductsearch.co.uk

LATEST CASE STUDIES



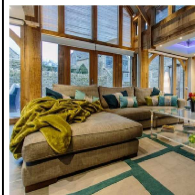
Uponor heats up
NHL star's log
cabin

[Read More](#)



The Product
People at MK
Dons Football
Club

[Read More](#)



Grand Design
Blinds feature at
stunning
Gloucestershire
home

[Read More](#)

[Desktop Site](#) | [Mobile Site](#)