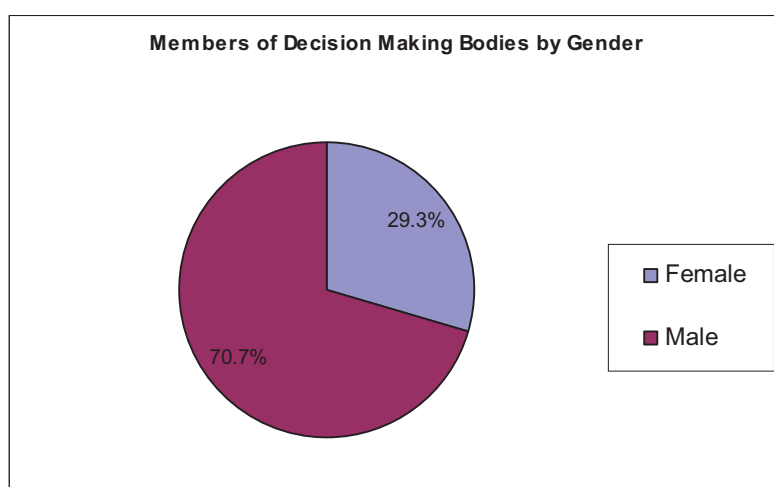


## Members of decision making bodies/committees

These tables show the division of staff who are members of decision making bodies or committees, against the protected characteristics of gender, disability, ethnicity and age. This group includes staff who are members of the Directors Management Team, Heads of Departments, Heads of Services and School Office Holders. Please note that some decision making bodies and committees include members who are not on the LSE Payroll, therefore we do not hold information regarding their protected characteristics and they have not been included in this data.

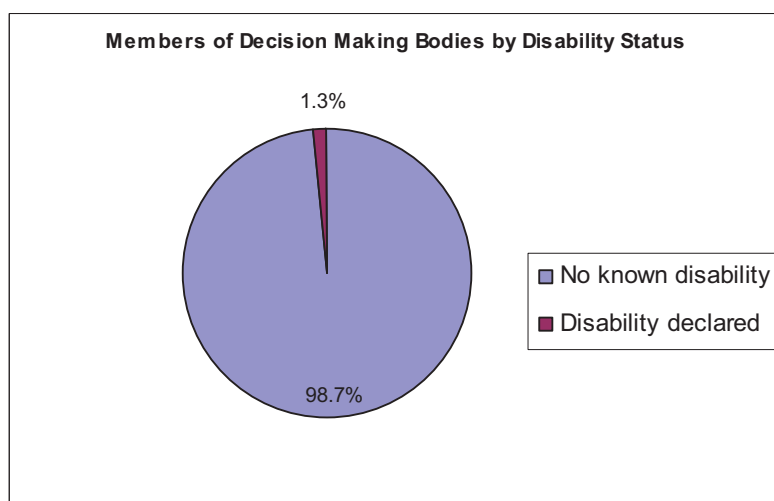
### Staff by gender and decision making bodies

Gender	Headcount	Percentage
Female	22	29.3%
Male	53	70.7%
Grand Total	75	100.0%



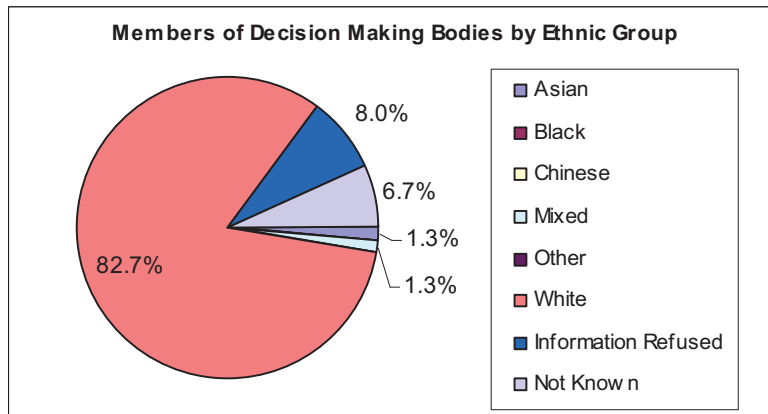
### Staff by disability status and decision making bodies

Disability Status	Headcount	Percentage
No known disability	74	98.7%
Disability declared	1	1.3%
Grand Total	75	100.0%



### Staff by ethnic group and decision making bodies

Ethnic Group	Headcount	Percentage
Asian	1	1.3%
Black	0	0.0%
Chinese	0	0.0%
Mixed	1	1.3%
Other	0	0.0%
White	62	82.7%
Information Refused	6	8.0%
Not Known	5	6.7%
Grand Total	75	100.0%



### Staff by age group and decision making bodies

Age Group	Headcount	Percentage
16-24	0	0.0%
25-34	0	0.0%
35-44	6	8.0%
45-54	32	42.7%
55-64	32	42.7%
65+	5	6.7%
Grand Total	75	100.0%

