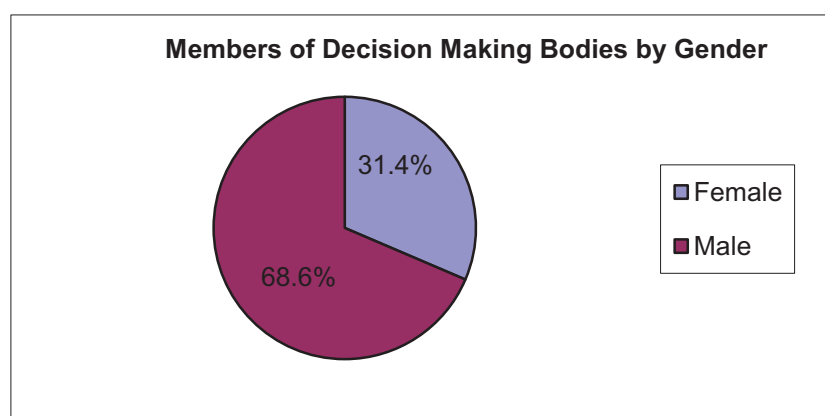


## Members of decision making bodies/committees

These tables show the division of staff who are members of decision making bodies or committees, against the protected characteristics of gender, disability, ethnicity and age. This group includes staff who are members of the Directors Management Team, Heads of Departments, Heads of Services and School Office Holders. Please note that some decision making bodies and committees include members who are not on the LSE Payroll, therefore we do not hold information regarding their protected characteristics and they have not been included in this data.

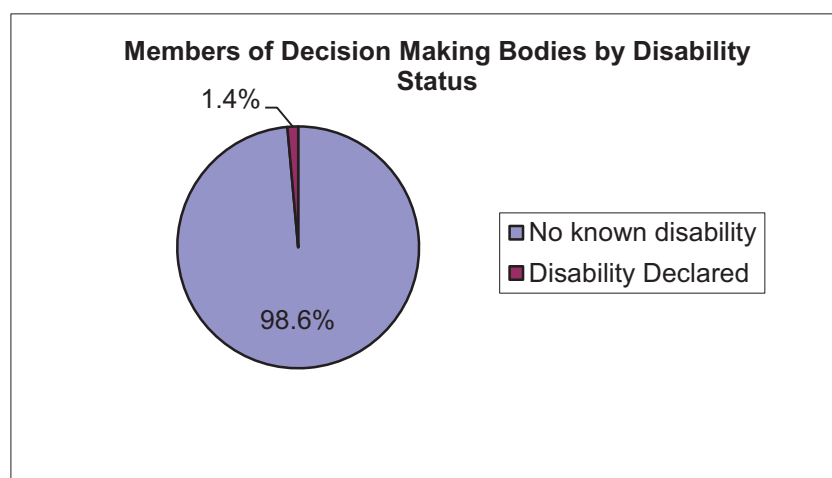
### Staff by gender and decision making bodies

| Gender      | Headcount | Percentage |
|-------------|-----------|------------|
| Female      | 22        | 31.4%      |
| Male        | 48        | 68.6%      |
| Grand Total | 70        | 100.0%     |



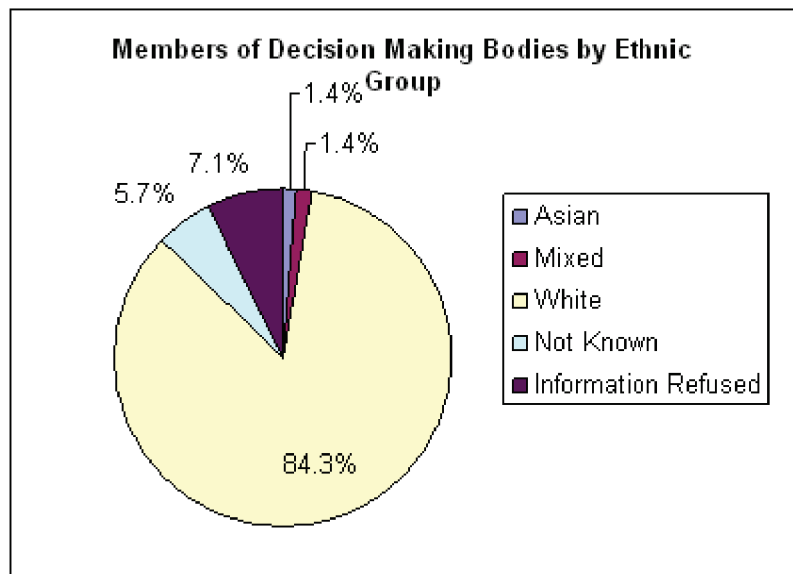
### Staff by disability status and decision making bodies

| Disability Status   | Headcount | Percentage |
|---------------------|-----------|------------|
| No known disability | 69        | 98.6%      |
| Disability Declared | 1         | 1.4%       |
| Grand Total         | 70        | 100.0%     |



### Staff by ethnic group and decision making bodies

| Ethnic Group        | Headcount | Percentage |
|---------------------|-----------|------------|
| Asian               | 1         | 1.4%       |
| Black               | 0         | 0.0%       |
| Chinese             | 0         | 0.0%       |
| Mixed               | 1         | 1.4%       |
| Other               | 0         | 0.0%       |
| White               | 59        | 84.3%      |
| Not Known           | 4         | 5.7%       |
| Information Refused | 5         | 7.1%       |
| Grand Total         | 70        | 100.0%     |



## Staff by age group and decision making bodies

| Age Group   | Headcount | Percentage |
|-------------|-----------|------------|
| 16-24       | 0         | 0.0%       |
| 25-34       | 0         | 0.0%       |
| 35-44       | 11        | 15.7%      |
| 45-54       | 30        | 42.9%      |
| 55-64       | 25        | 35.7%      |
| 65+         | 4         | 5.7%       |
| Grand Total | 70        | 100.0%     |

