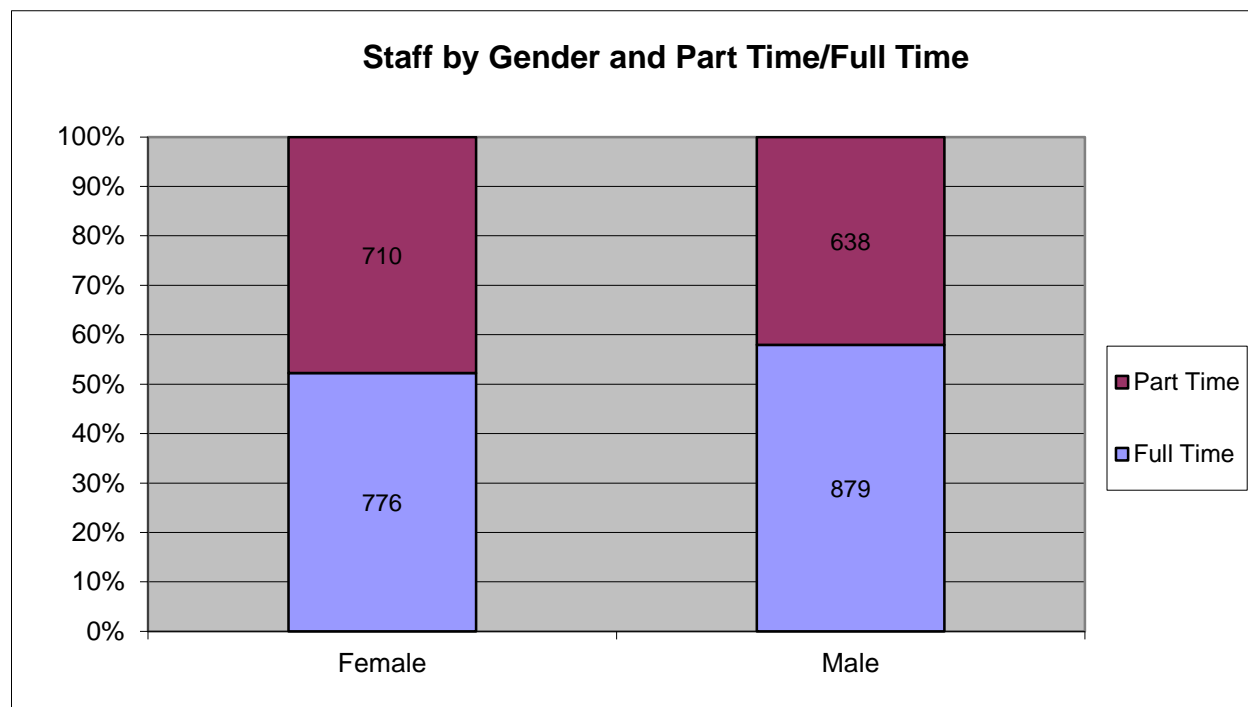


Full-Time/Part-Time

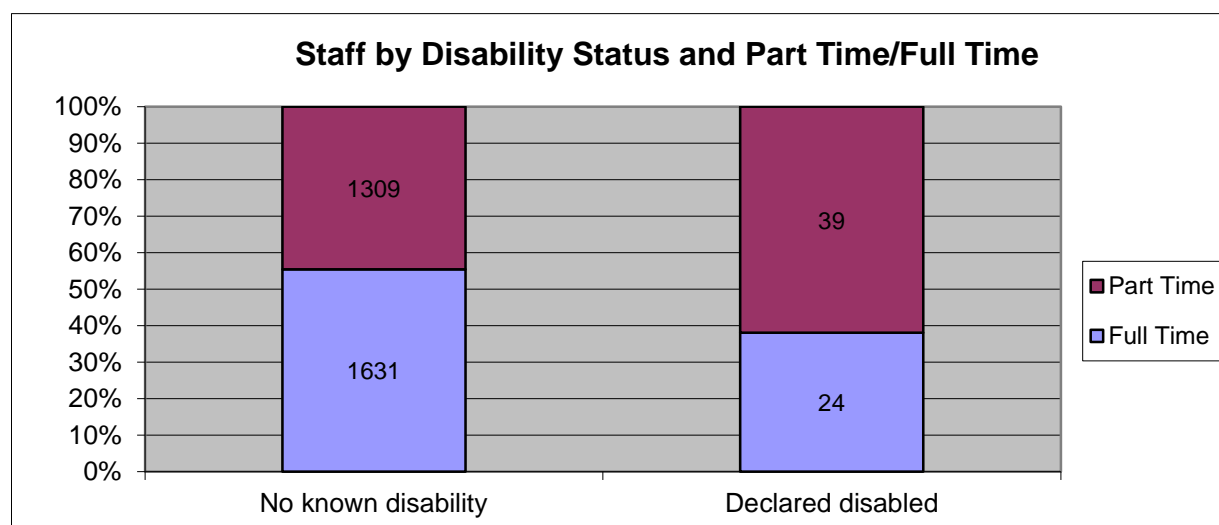
The tables below show the split of full time and part time staff against the protected characteristics of gender, disability, ethnicity and age. Data is based upon a headcount of staff at the LSE as at 31st October 2011. Part time staff are those who are contracted to work less than 35 hours per week.

Staff by Gender and Full-Time/Part-Time



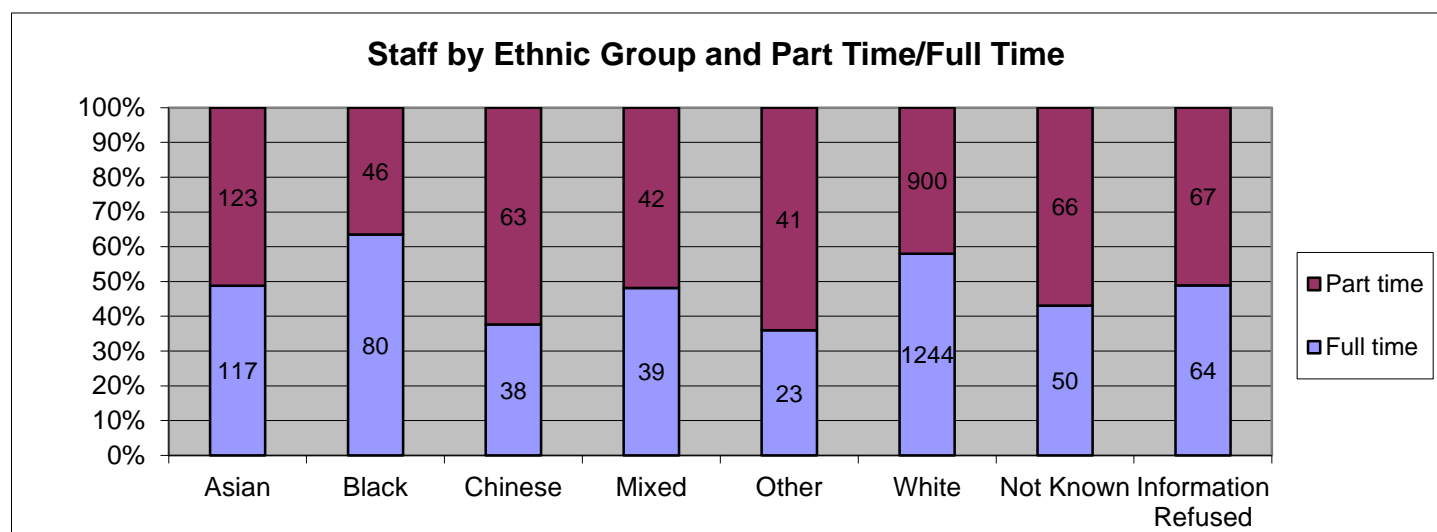
Full Time/Part Time	Female	Male	Total
Full Time	776	879	1655
Part Time	710	638	1348
Grand Total	1486	1517	3003

Staff by Disability and Full-Time/Part-Time



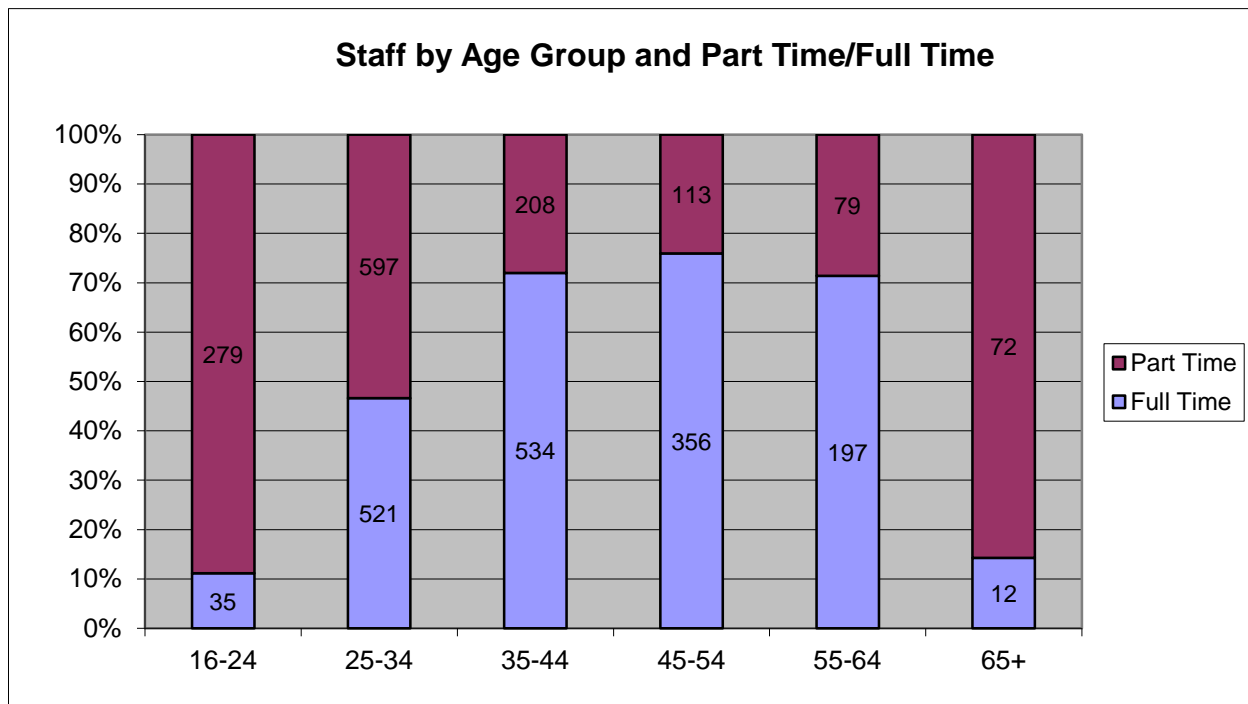
Full Time/Part Time	No known disability	Declared disabled
Full Time	1631	24
Part Time	1309	39
Grand Total	2940	63

Staff by Ethnic Group and Full-Time/Part-Time



Ethnic Groups	Full Time	Part Time
Asian	117	123
Black	80	46
Chinese	38	63
Mixed	39	42
Other	23	41
White	1244	900
Not Known	50	66
Information Refused	64	67
Grand Total	1655	1348

Staff by Age Group and Full-Time/Part-Time



Age Range	Full Time	Part Time
16-24	35	279
25-34	521	597
35-44	534	208
45-54	356	113
55-64	197	79
65+	12	72
Grand Total	1655	1348