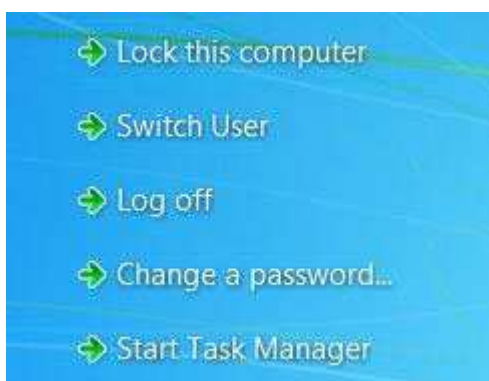


How to Change Your LSE Password

On a campus Windows PC

1. Log on as normal. Once you are logged in, press **<CTRL>+<ALT>+**
2. Choose the **Change password** option



3. Your username will appear automatically. You will be asked to enter your old password, your new password and your new password again to confirm.



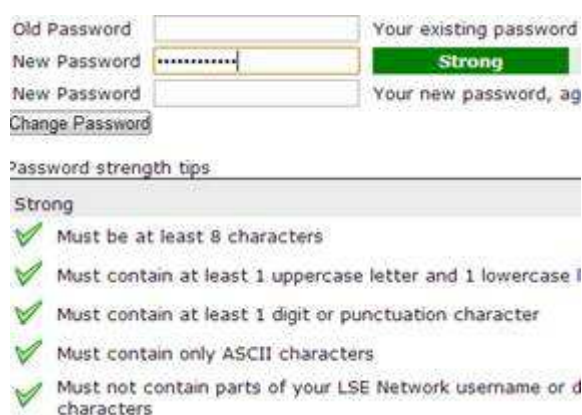
4. If you have entered something incorrectly, you will be notified and given the chance to make corrections. You will also be notified if your password change has been successful.

Off-campus, or with a Mac or your own laptop, using LSE For You

1. Log in to [LSE For You](#) with your existing username and password. From the left hand menu, select **Account Management** and then **Change Password**



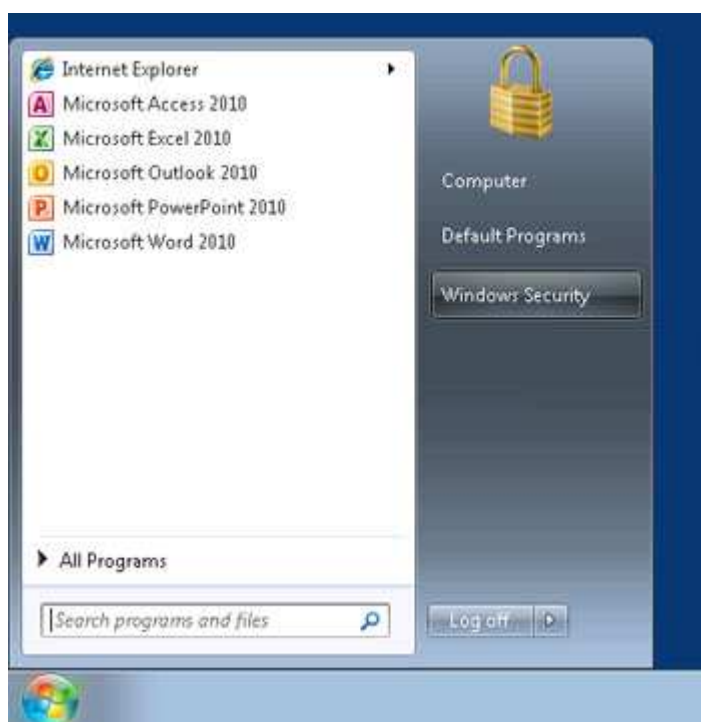
2. At the bottom of the page are three input boxes: one for your old password, one for your new password and one for a repeat of the new password.
3. Enter your new password. As you do so, the red crosses below will become green ticks if your new password meets all the appropriate rules

A screenshot of the password change form. It features three input fields: 'Old Password' (with the label 'Your existing password'), 'New Password' (with a strength indicator showing 'Strong'), and another 'New Password' field (with the label 'Your new password, ag'). A 'Change Password' button is located below the fields. Below the form is a section titled 'Password strength tips' with a 'Strong' status. The tips are: 'Must be at least 8 characters', 'Must contain at least 1 uppercase letter and 1 lowercase l', 'Must contain at least 1 digit or punctuation character', 'Must contain only ASCII characters', and 'Must not contain parts of your LSE Network username or d characters'. Each tip is preceded by a green checkmark.

4. Once you've entered your new password into both boxes, click the **Change Password** button and your password will be changed.

Off-campus, or with your own laptop via the Remote Desktop

1. Access the Remote Desktop. See our guidance for accessing the Remote Desktop from your system:
 - [using Linux](#)
 - [using Apple Mac OS X](#)
 - [using Windows 2000/XP/Vista/7](#)
2. Once you are logged in, click on **Start > Windows Security**



3. Choose the **Change Password** option. You will be asked to enter your old password, your new password and your new password again to confirm.
4. If you have entered something incorrectly, you will be notified and given the chance to make corrections. You will also be notified if your password change has been successful.

After you have changed your password, and if you have not already done so, you may find it helpful to [set up your security questions in LSE for You](#) in case you forget your password in the future.