

## Introduction

These installation instructions are to accompany the **Atlas.ti 5 CD** issued by IT Services to students and staff of the London School of Economics.

This version of Atlas.ti will run on a Windows 2000 and a Windows XP PC. Your computer should have at least 128 Mbytes of Ram and, of course, you must have a CD-ROM drive.

## Purchasing a CD

Copies of the CD can be purchased from the IT Help Desk (Library Lower Ground Floor) for £10, which covers the cost of administration.

Upon purchasing a CD from the Help Desk you will find a unique **Activation Number** on the CD case.

Take this number with you and at an LSE networked computer, login as yourself and go to the following website via Internet Explorer:

<http://www.atlasti.com/users/>

*You will be prompted to provide an institution name.*

1. Enter **LSE** as the institution name and your **activation number** as password.
2. Select **Login** and then follow the on-screen instructions.  
*You may wish to maximise the window in order to be able to see the form which you have to complete to register the software.*
3. You will need to enter your LSE email address and LSE internal ID number - the unique number at the top left corner of your staff or student id card (not the barcode number).

4. Enter the LSE address as :

Houghton Street

London WC2A 2AE

5. After activating the licence (by clicking on the "Activate" button on the user main page), you will receive an email message containing an actual Atlas.ti serial number which you will use to install the software.  
***Please keep this email in a safe place for future reference. It may be a good idea to print out a copy as well.***

The licence agreement allows you to use Atlas.ti 5 for up to one year. After this time, you will be required to deactivate the licence by going back to the same web page, logging in with the same credentials and deactivating the licence.

*Please note that the number of licences being handed out is being strictly monitored and you are likely to receive e-mail notification from IT Services if your copy has not been deactivated at the appropriate time.*

**Turn the page over for installation instructions**

## Instructions

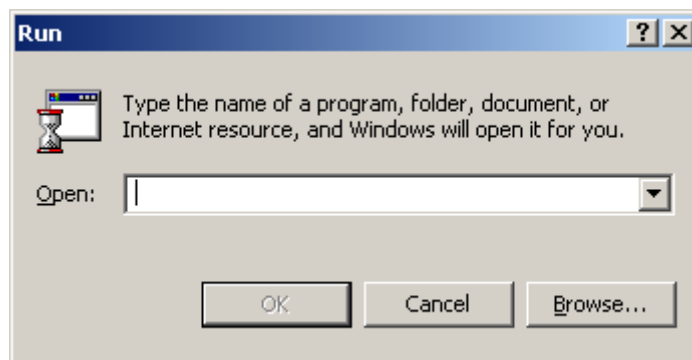
**Note:** During the installation process, you will be asked for the serial number which you received via e-mail. Please have this to hand.

### TO INSTALL ATLAS.TI 5 ON YOUR COMPUTER:

1. Insert the Atlas.ti 5 CD in the CD ROM drive of your PC and wait for the installation process to start automatically.

*If this doesn't happen automatically:*

Click on **START | RUN**



Enter x:\autoplay (x: is the letter assigned to the CD-ROM drive on your computer, for example D:, E: or F).

2. If the installation has started automatically, select **Install Atlas.ti** and follow the on-screen instructions.

**Note:** As you will be installing the software onto a local hard disk. uncheck **LAN-Aware mode** if it appears during installation.

3. Choose **Typical** for the Atlas.ti installation options.  
*Once the installation process is complete Atlas.ti 5 build 60 will be installed on your computer.*

## Service Packs

Atlas.ti sends out Service Pack updates on a very regular basis and you are advised to check if there are any Service Pack Updates which need to be applied to your software. Build 60 was already out of date when the software arrived on site at LSE.

### TO UPDATE YOUR SOFTWARE WITH THE LATEST SERVICE PACK

1. Download the latest service packs from:  
[www.atlasti.de/servicepacks](http://www.atlasti.de/servicepacks)
2. Save the downloaded file to:  
C:\Program Files\Scientific Software\Atlasti\
3. Open Atlas.ti 5 and click on **Tools | Service Pack Manager**.
4. Follow the on-screen instructions to update your software.