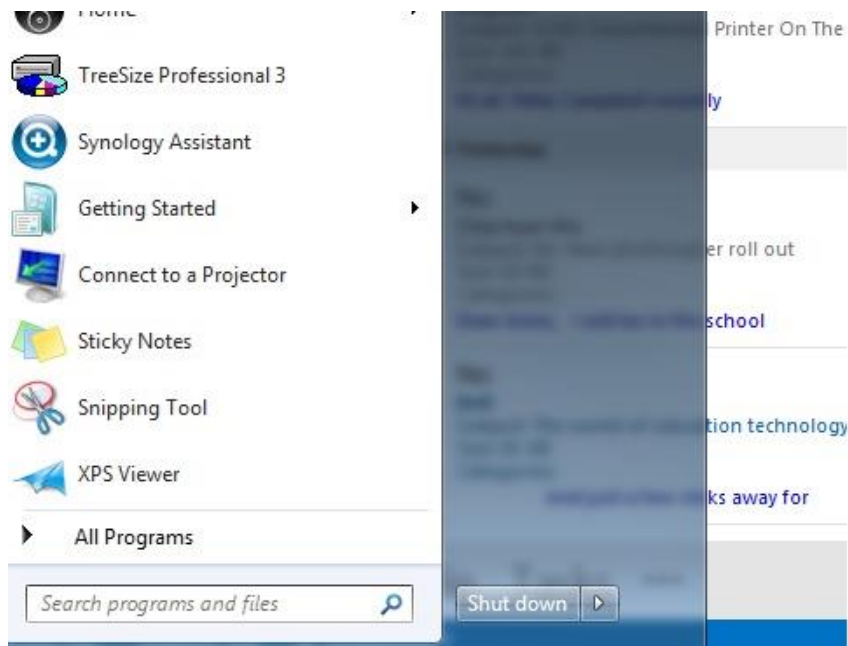


# Printing on Windows Laptops

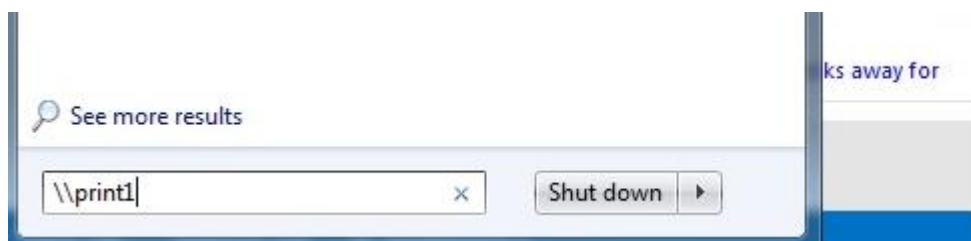
<http://www.lse.ac.uk/IMT>

This guide provides instructions on setting up printing from a LSE-owned Windows laptop:

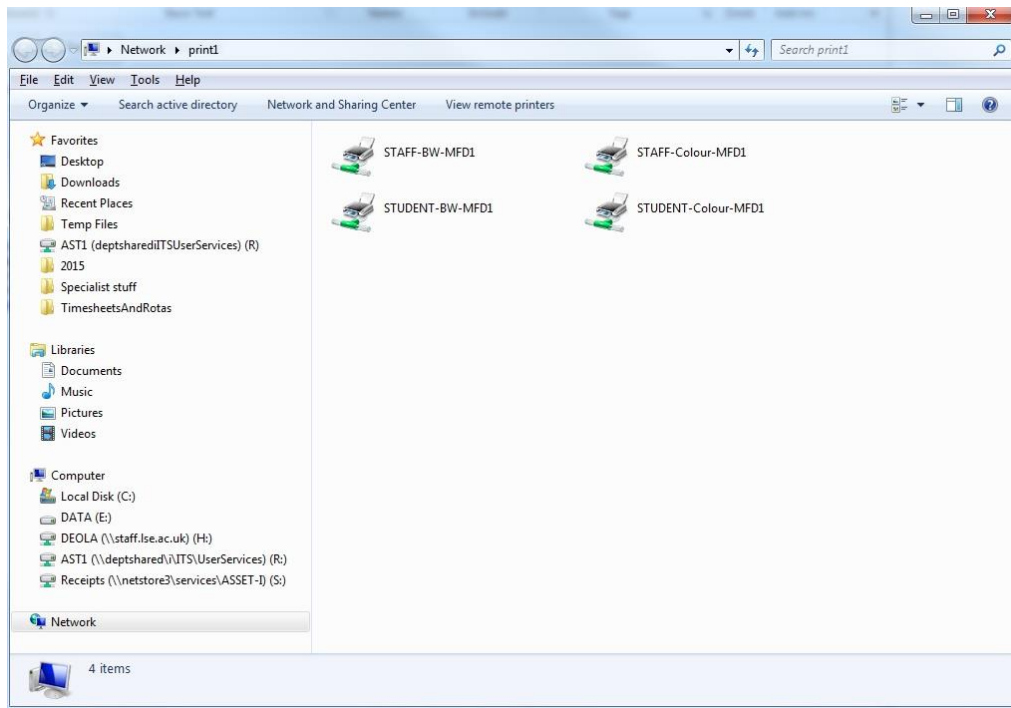
1. Open the **Start** menu.



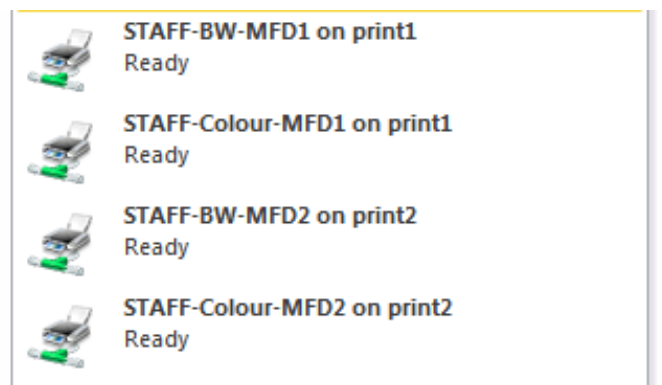
2. In the **Search programs and files** box, type **\\print1** or **\\print2** and press **Enter**.\*



3. In the window that pops up, double click on **STAFF-BW-MFD1** and **STAFF-Colour-MFD1** to install the print drivers.



4. You will now be able to print to any Canon printer on campus from your laptop using your LSE ID card.



\* Both [\\print1](#) and [\\print2](#) will allow you to print to the staff printing queues. If you experience issues printing to either print queue, try installing the drivers for the other queue. If you continue to experience problems, please contact the IT Service Desk for assistance.