

# London's Migration across the Recession

LSE London

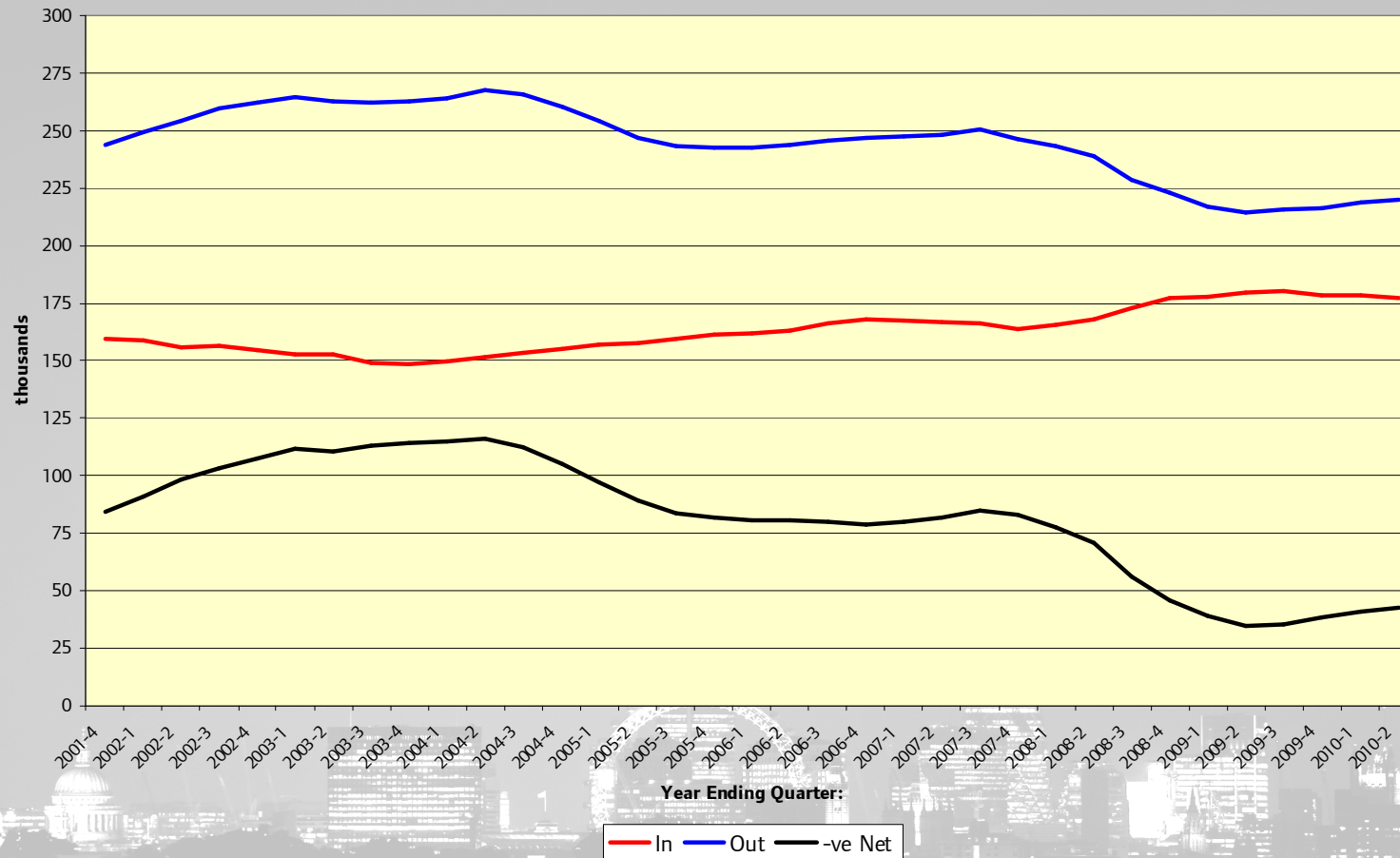
22<sup>nd</sup> March 2011



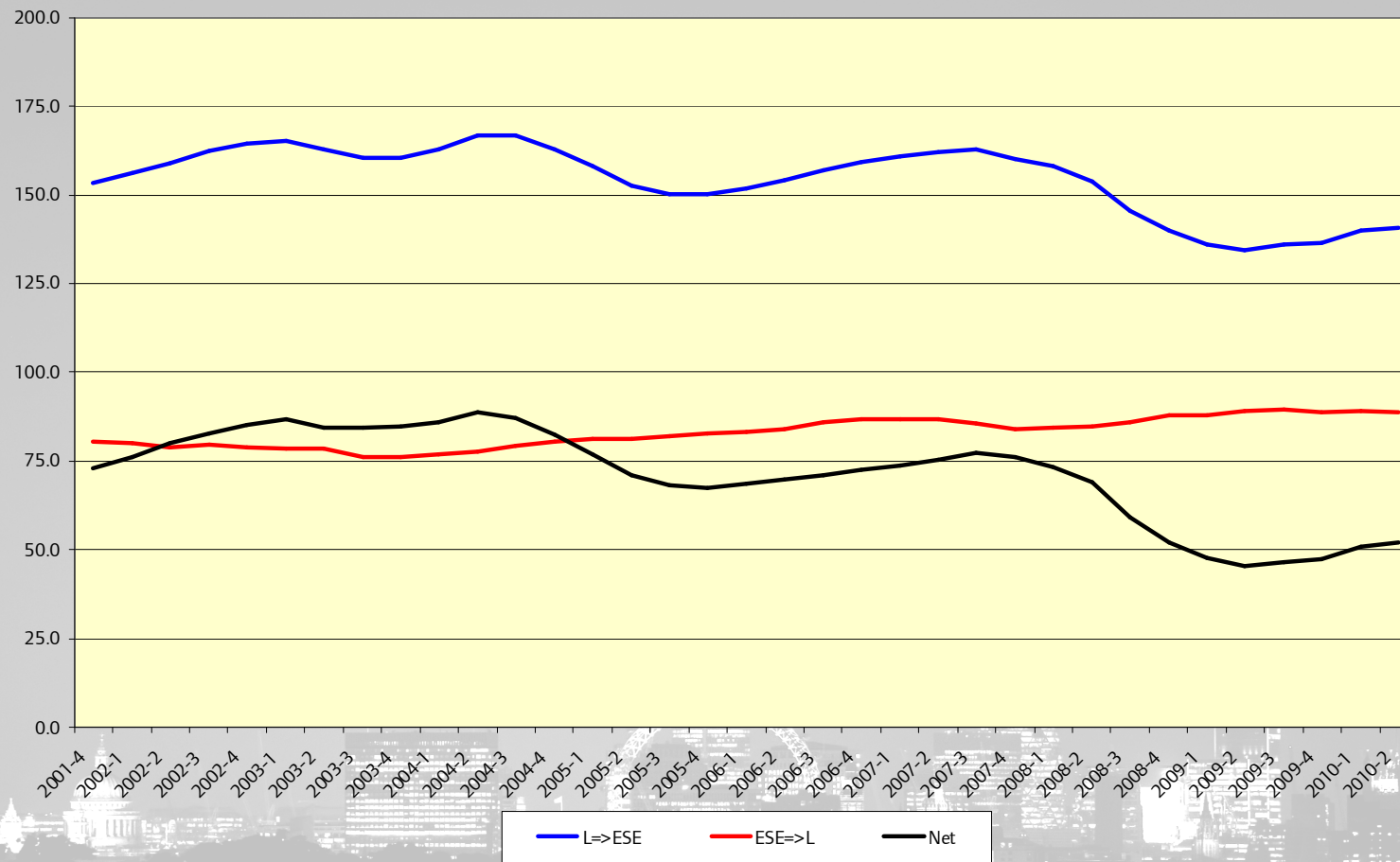
# Outline

- Internal Migration
  - Rest of UK and adjacent regions
  - Age patterns
- Long-Term International Migration
  - London numbers
  - UK details
- Overall Migration
- Other Evidence
  - NHS Flag 4s
  - National Insurance
- Conclusions?

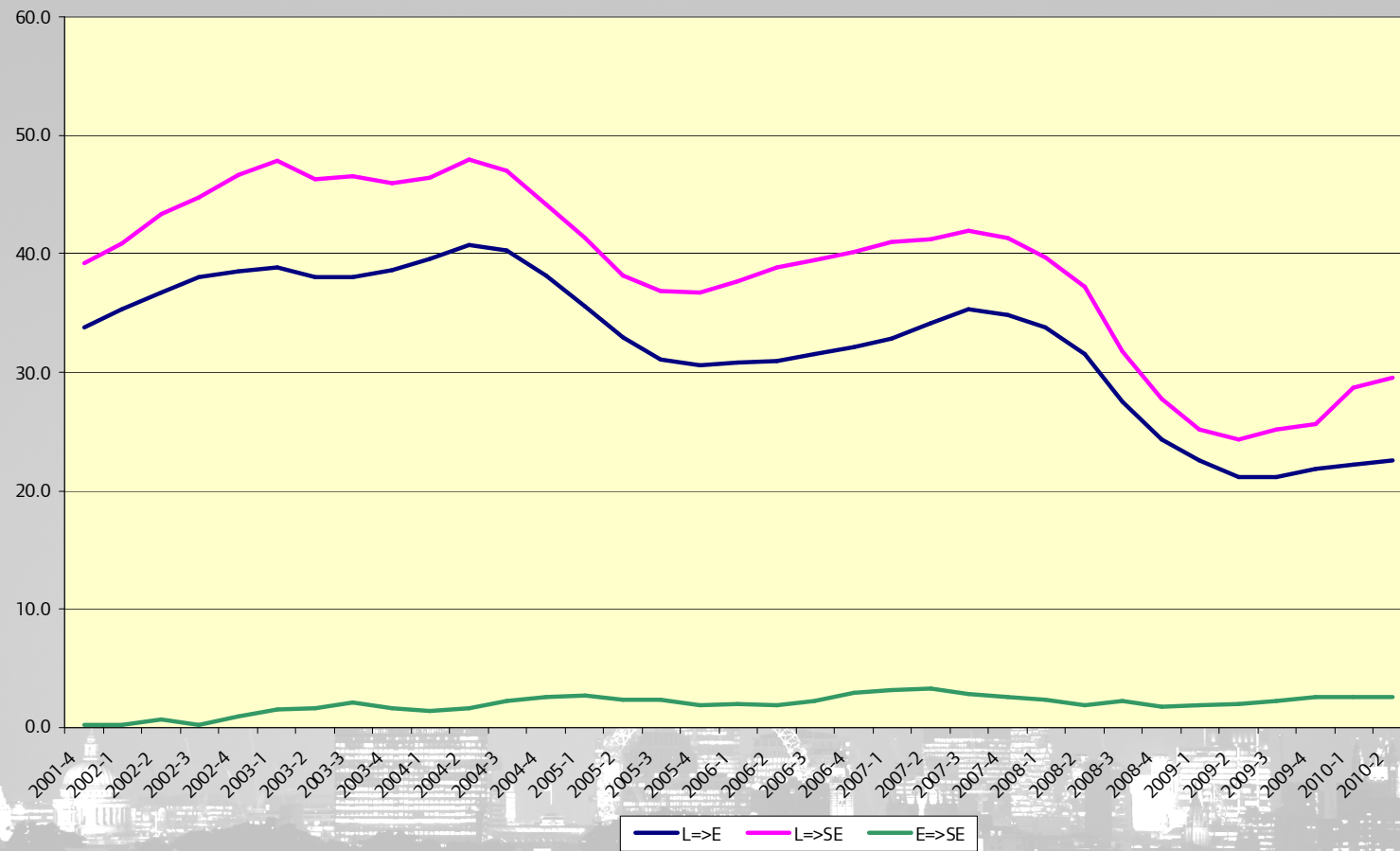
# London: Internal Migration Trends



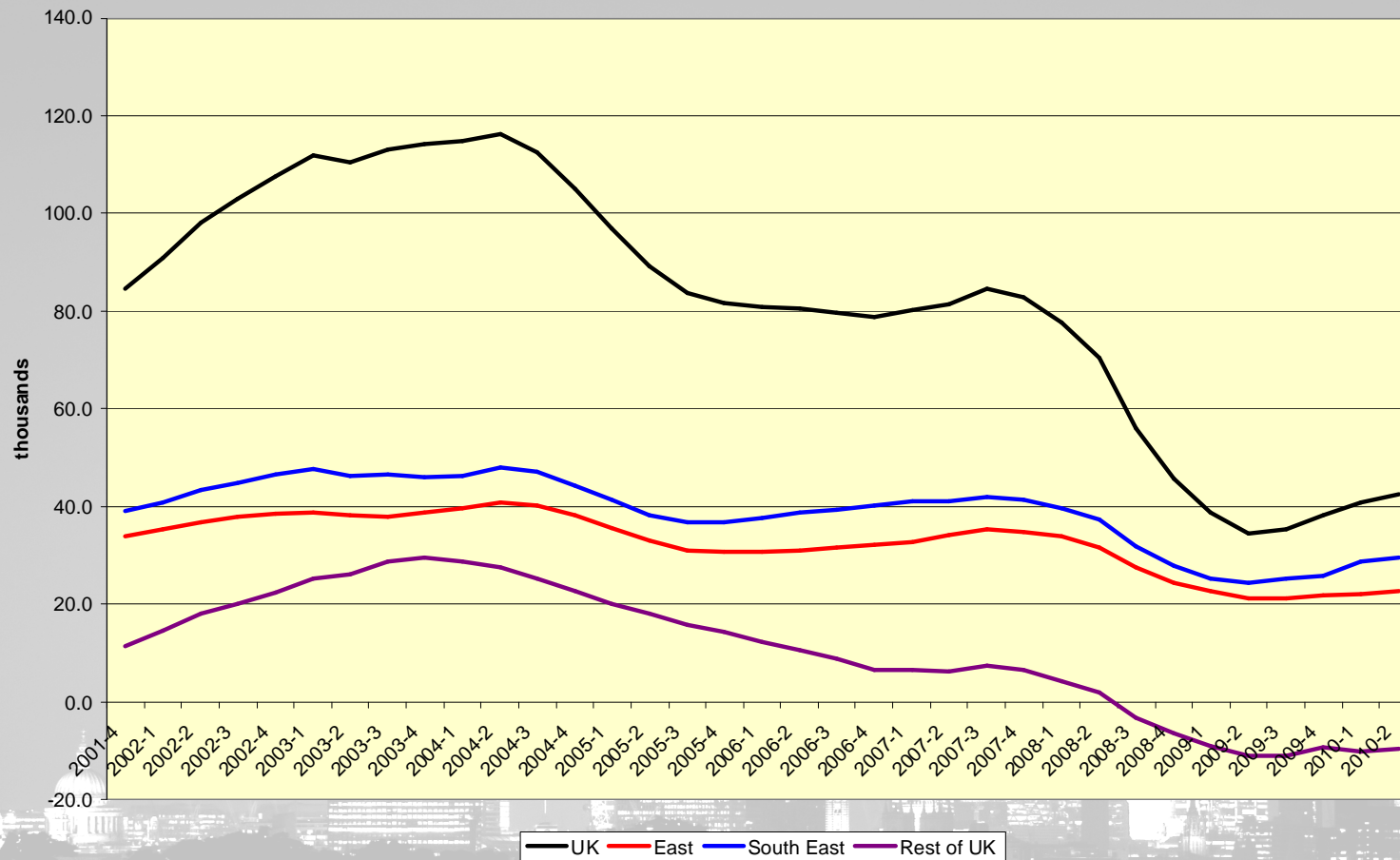
# London: Adjacent Regions (thousands)



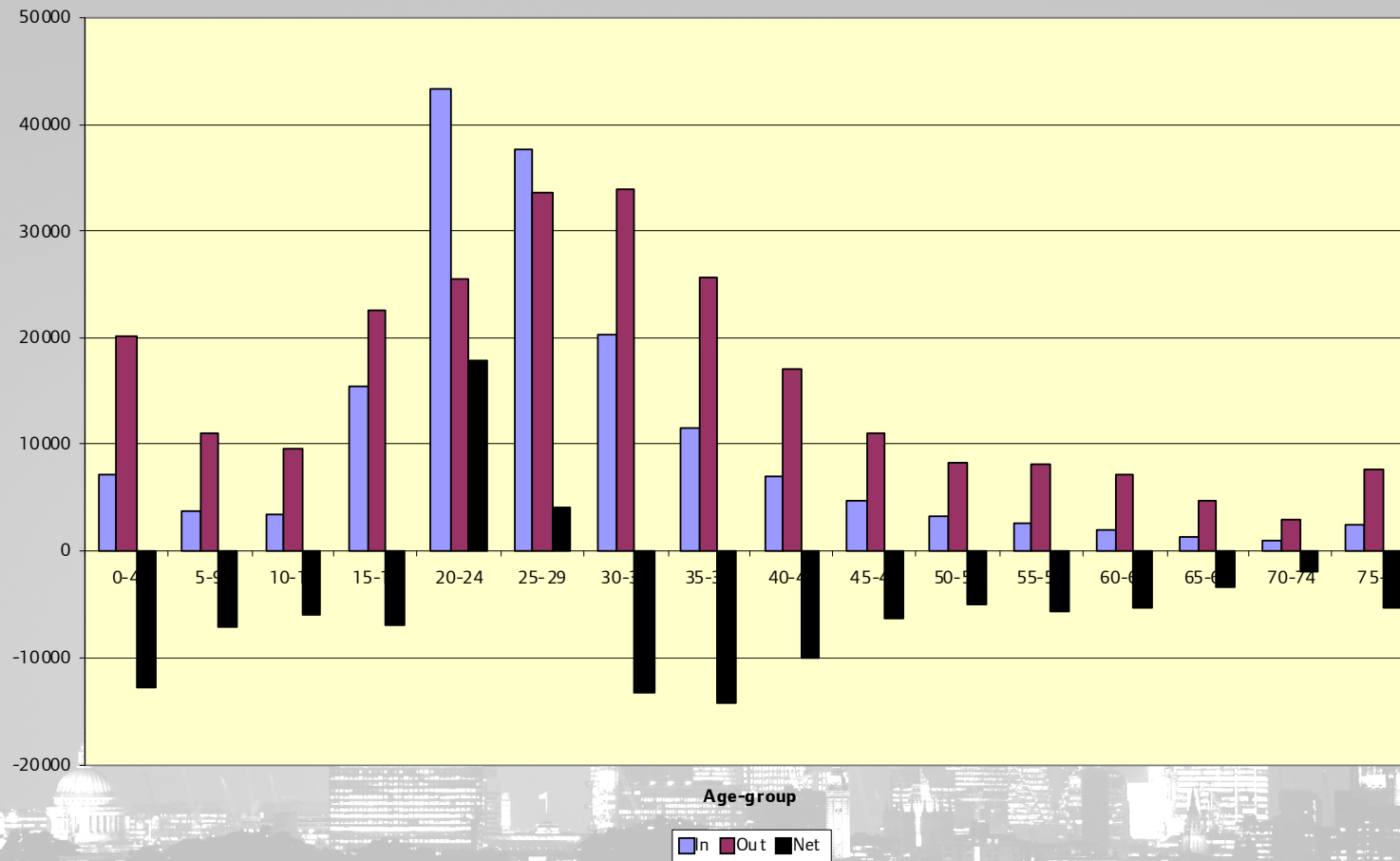
# London: Net Moves in 'South East' (thousands)



# London: Net Moves with Rest of UK

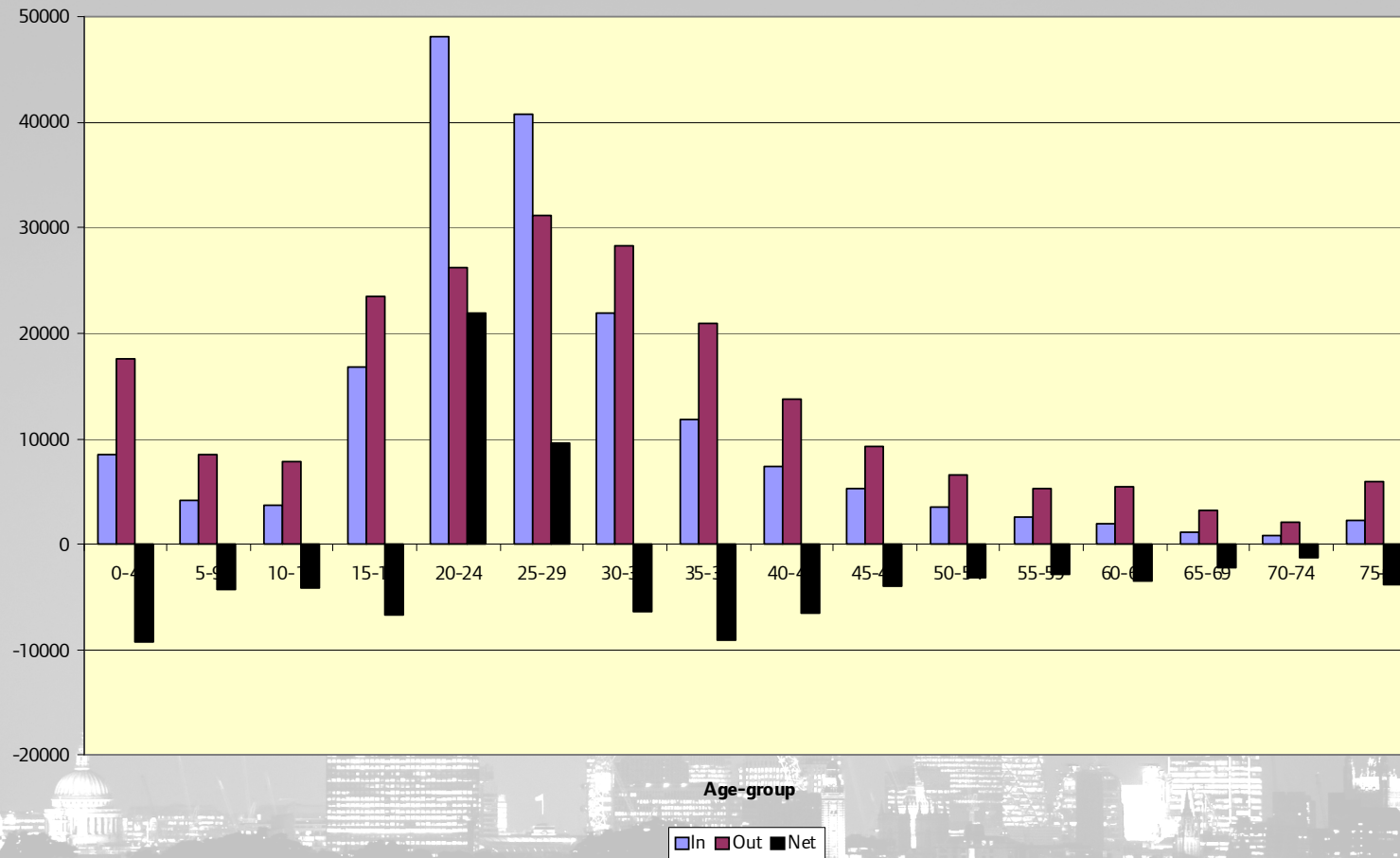


# London Moves with Rest of UK: 2007 Q2



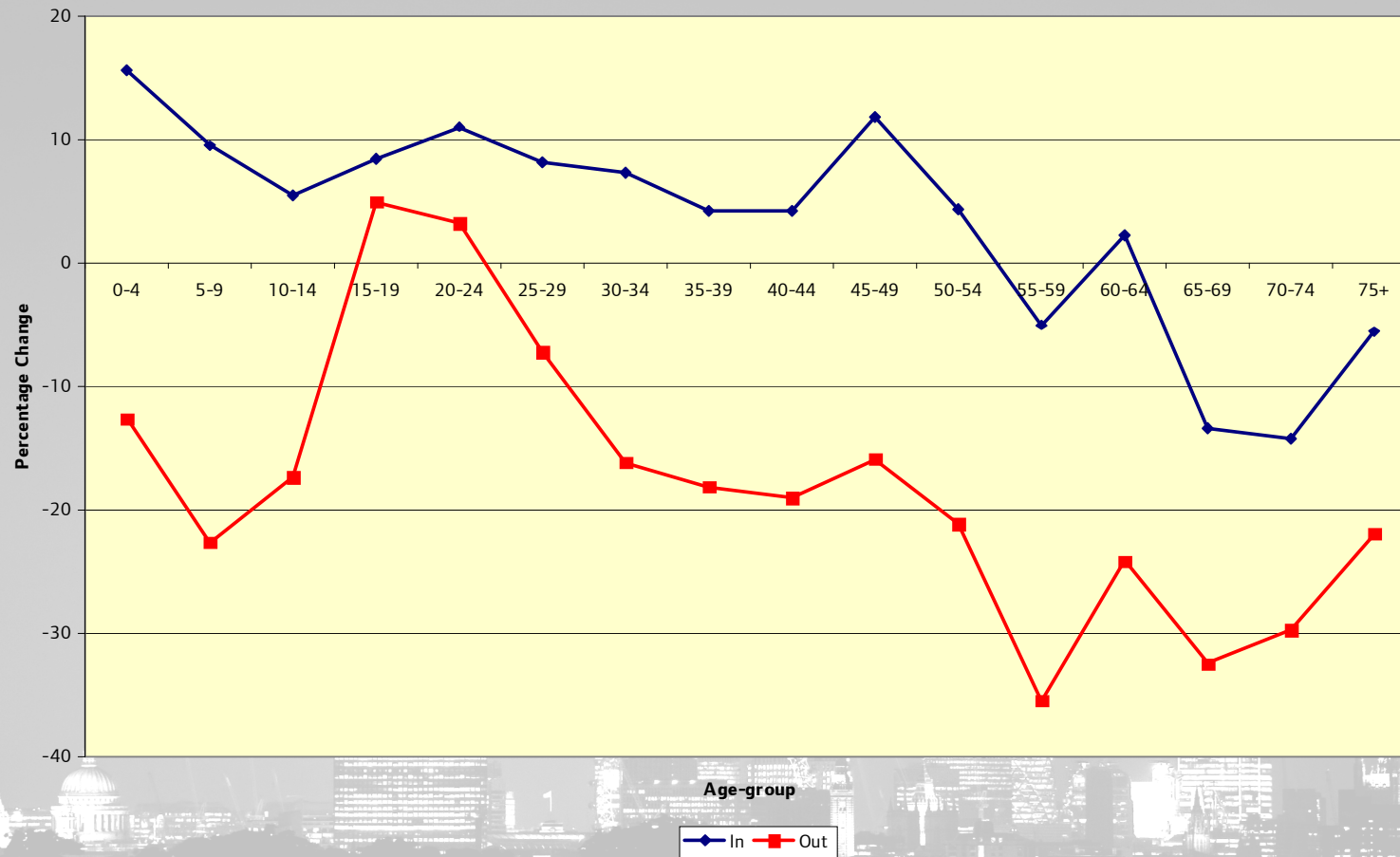


# London Moves with Rest of UK: 2009 Q3





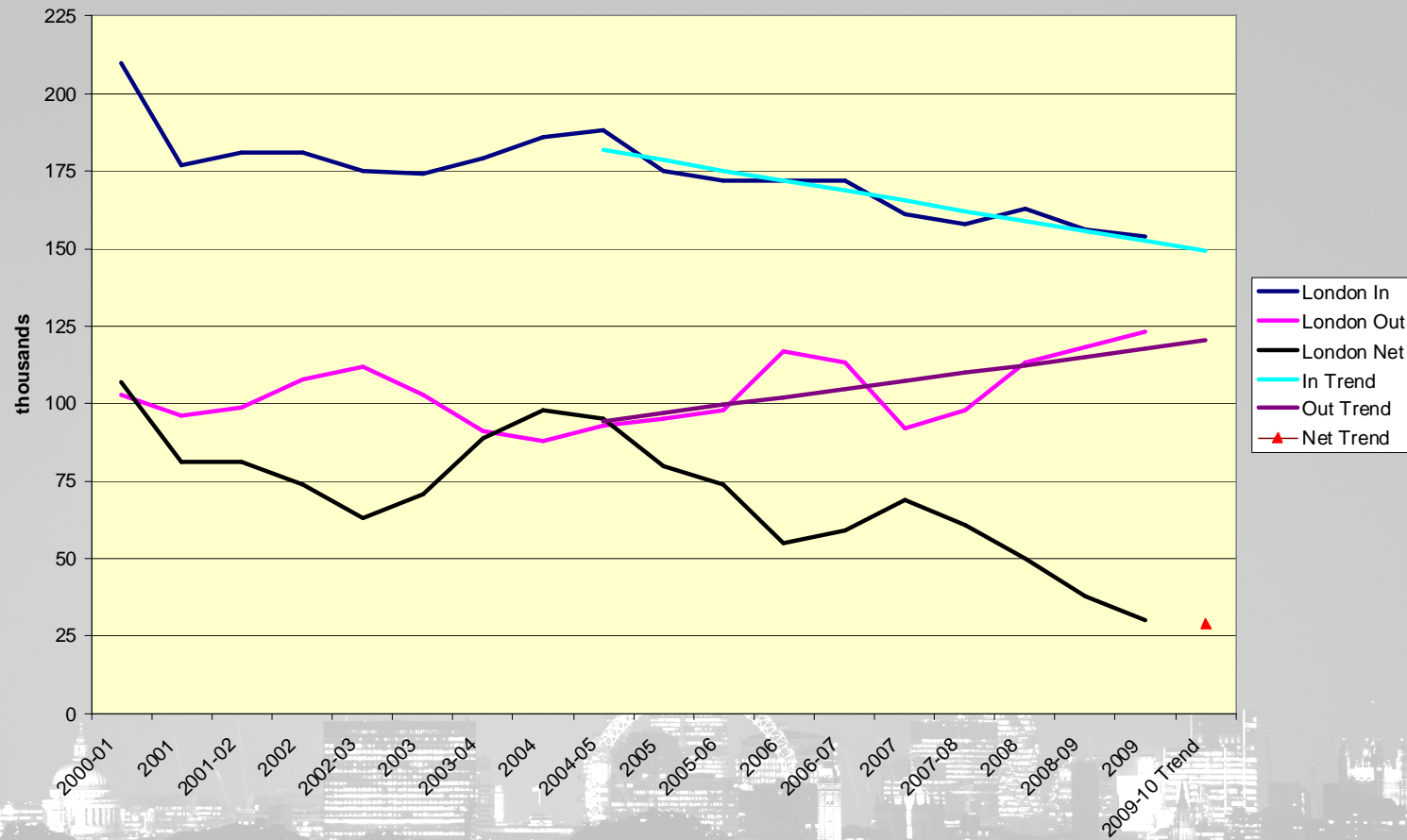
# London - Rest of UK: % Change 07Q2-09Q3



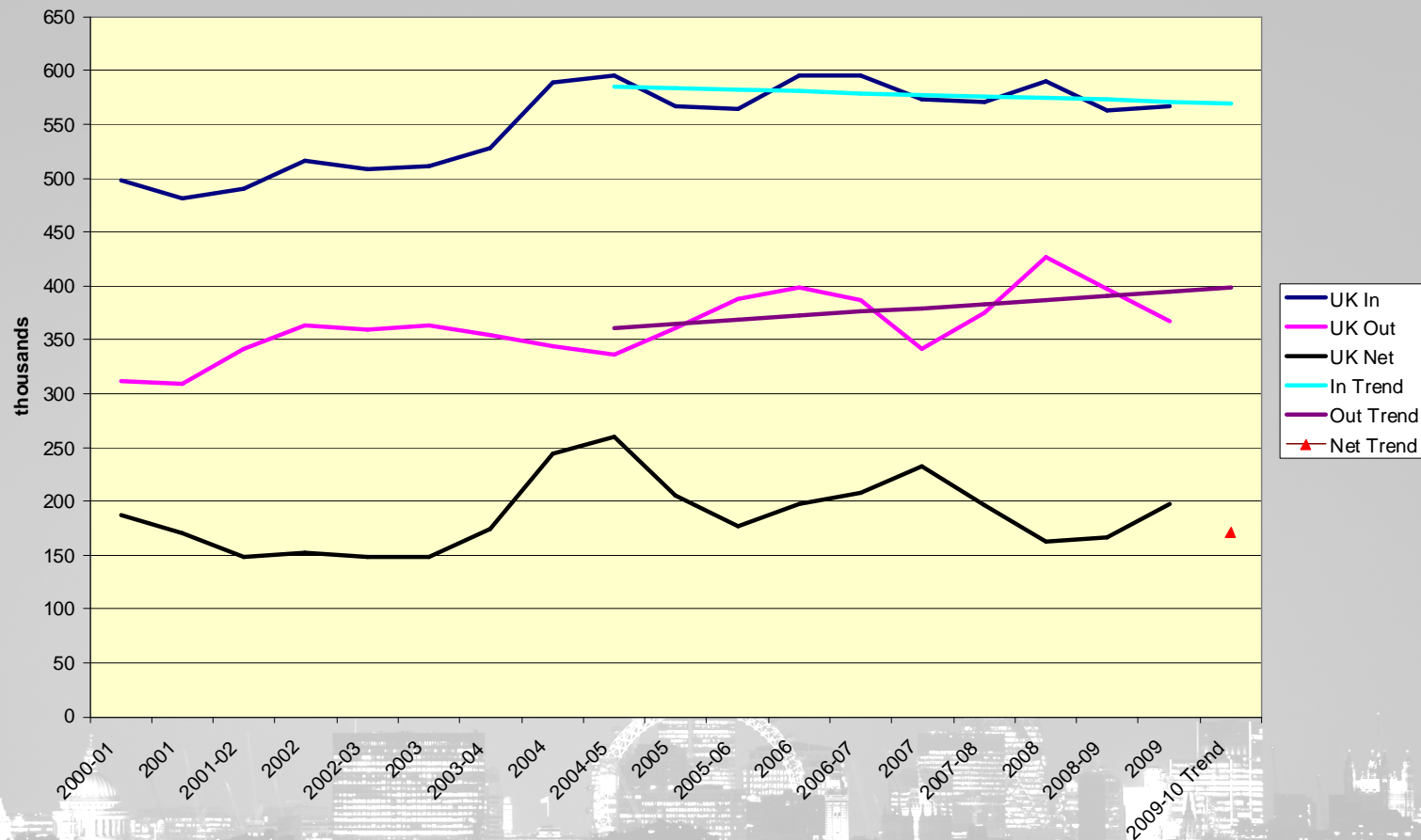
# 'South East': % Changes: 2006-07 to 2009-10

		From:				
		East	London	S East	Rest UK	Total
To:	East	-	-16.2	-5.8	-1.1	-8.7
	London	3.2	-	1.8	10.2	6.1
	South East	-7.5	-11.0	-	-3.5	-7.3
	Rest UK	-10.0	-8.6	-12.1	-	-
	Total	-6.2	-11.5	-7.5	-	-5.5

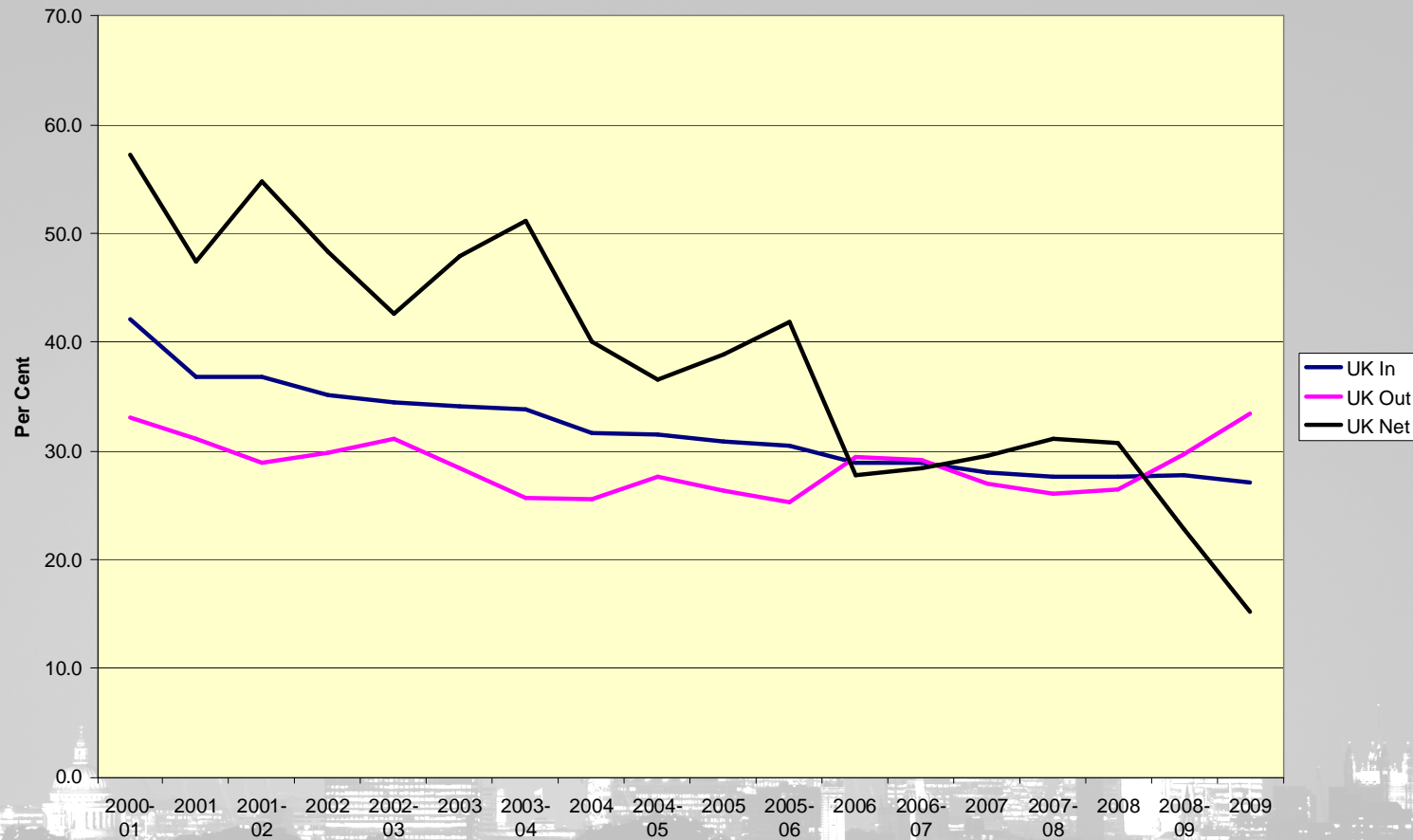
# London: International Trends (LTIM)



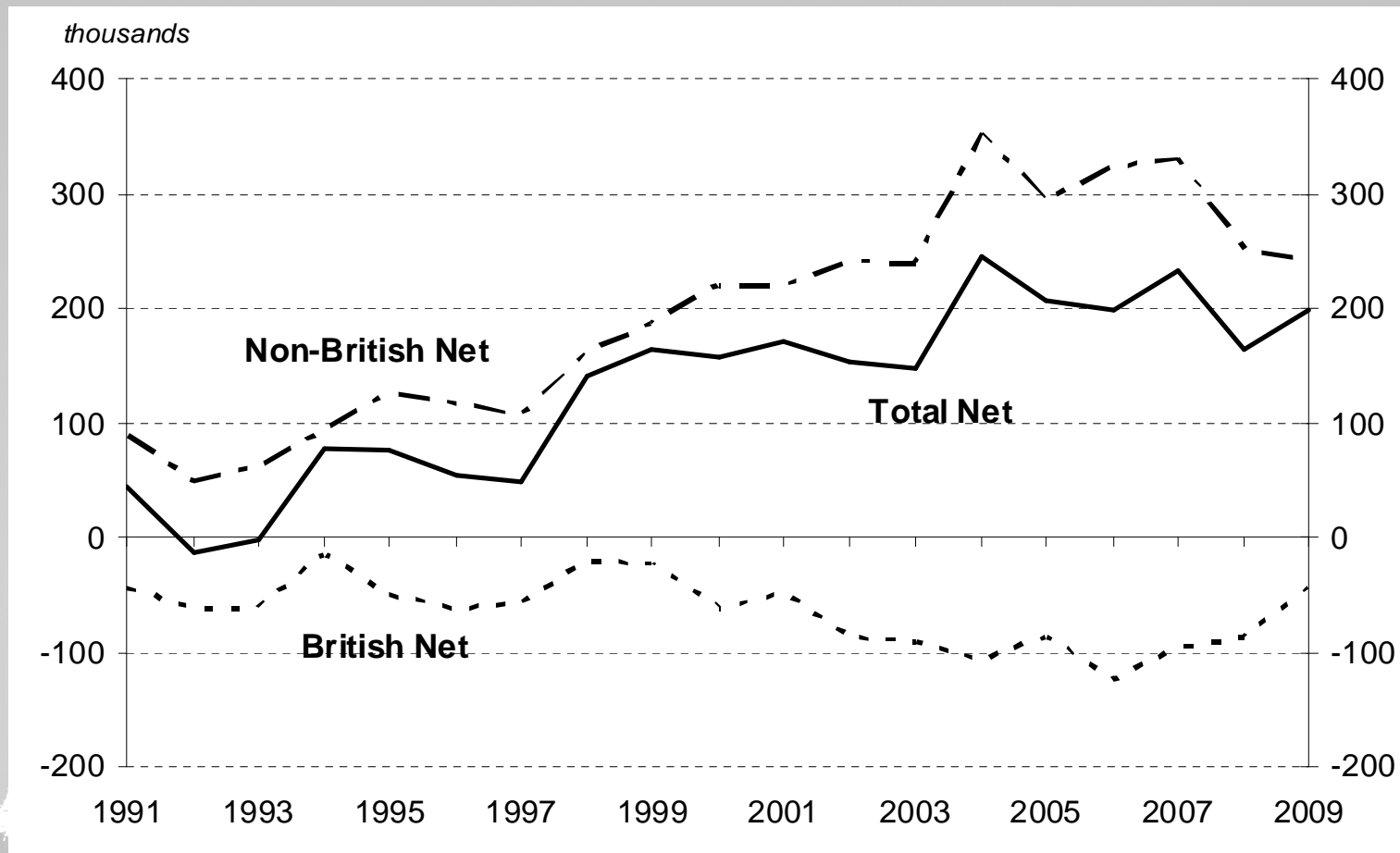
# UK: International Trends (LTIM)



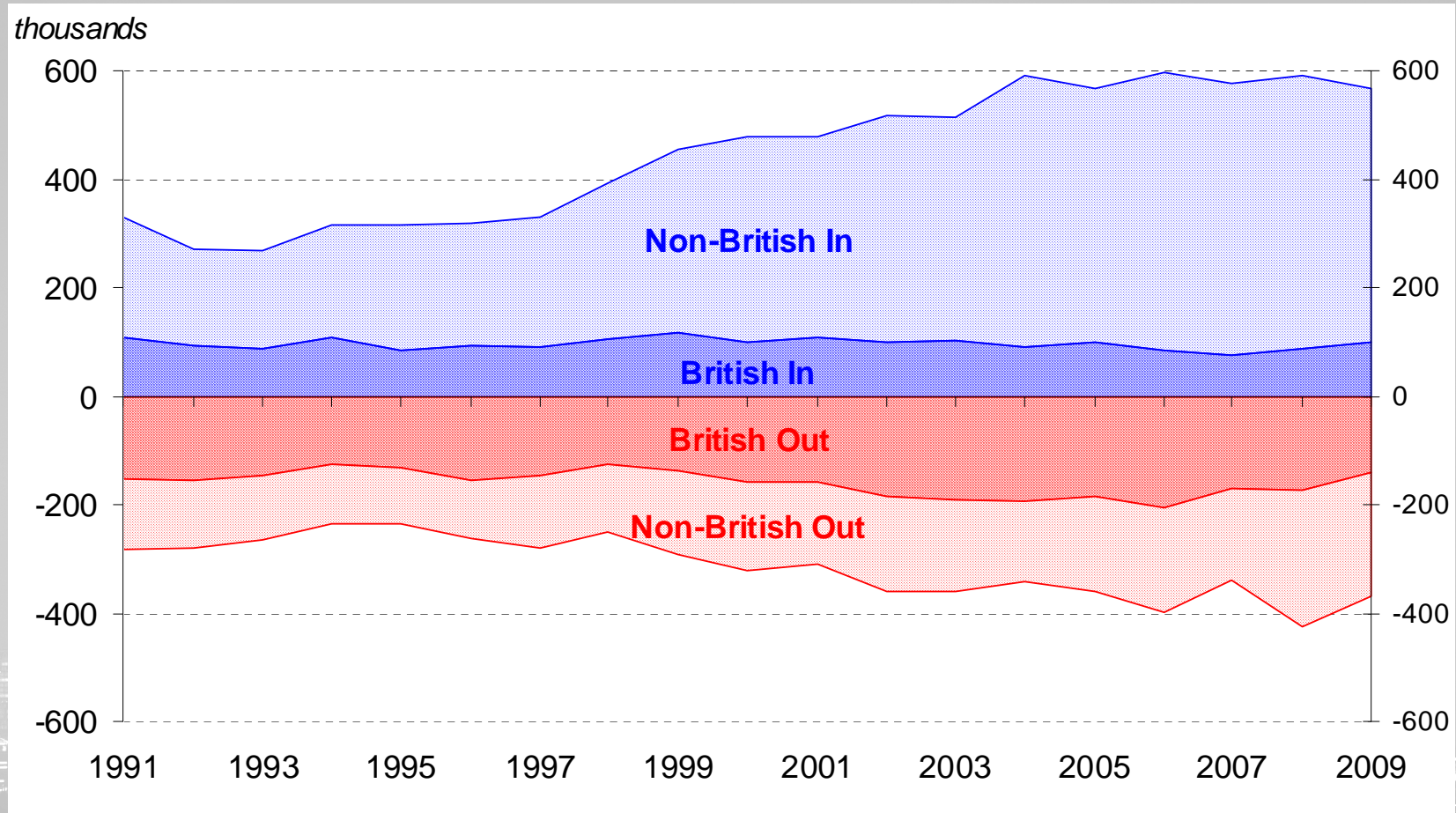
# London: International Flows: Percentage of UK



# UK: Net Flow by Citizenship (ONSCD Chart)

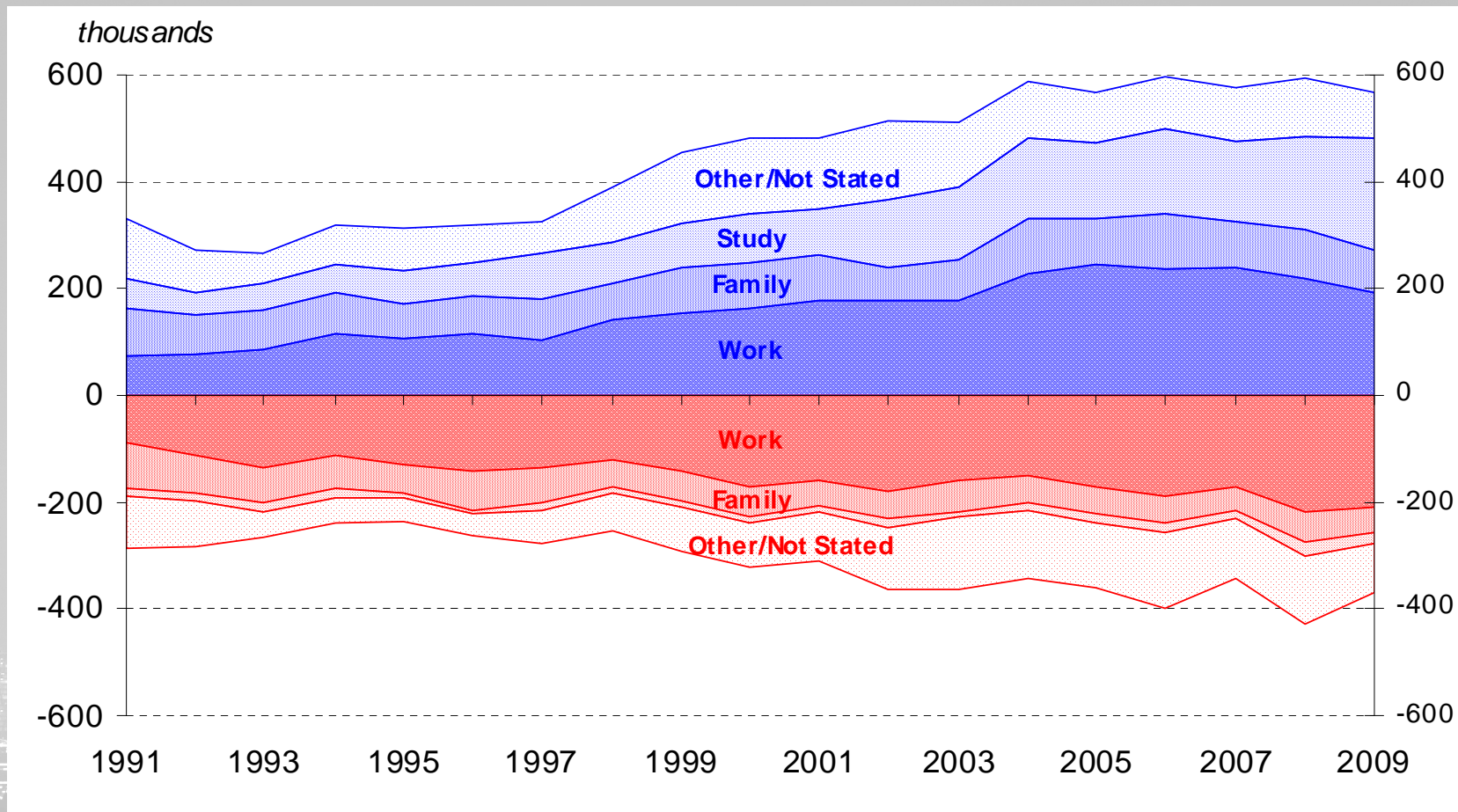


# UK: Gross Flows by Citizenship (ONSCD Chart)

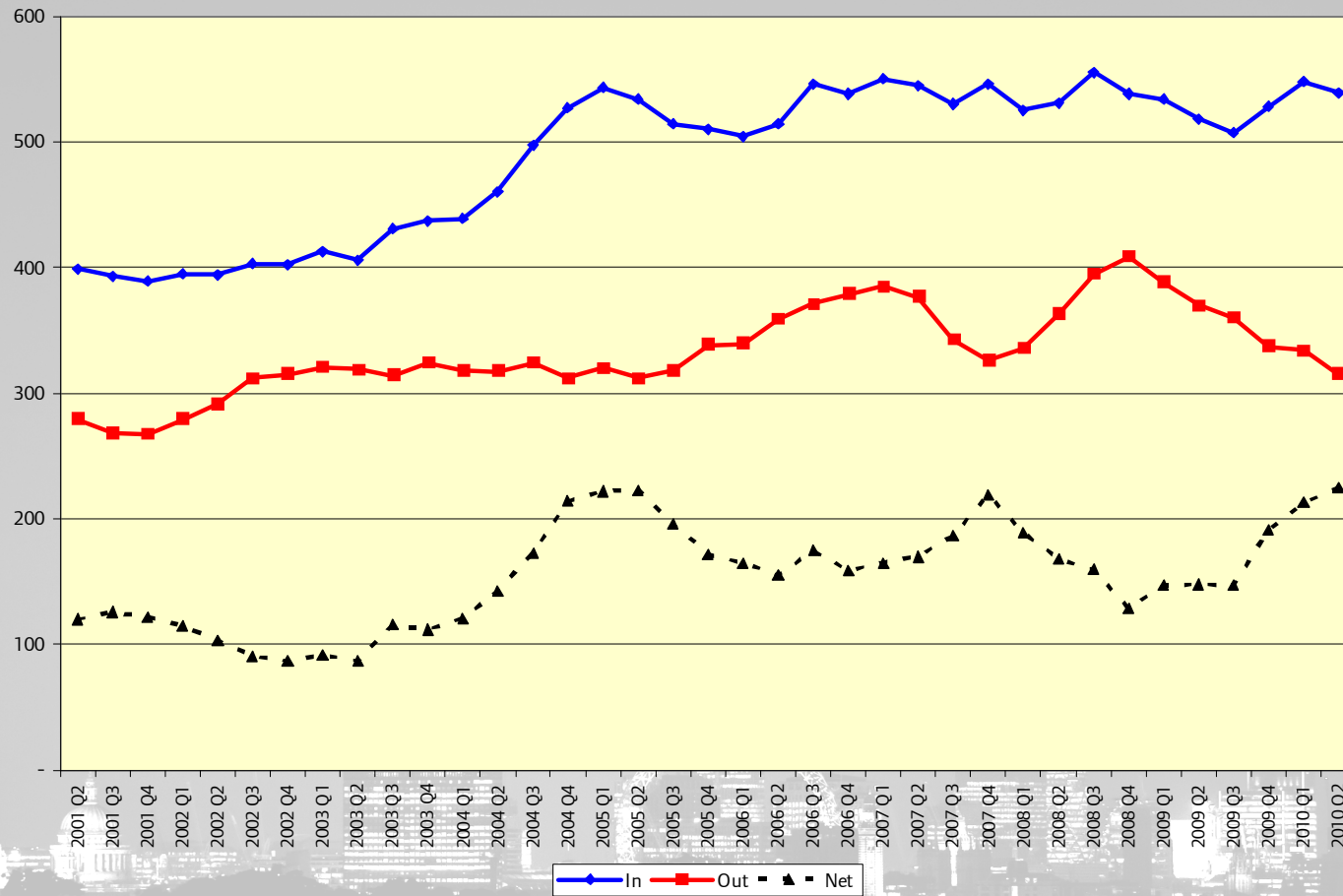




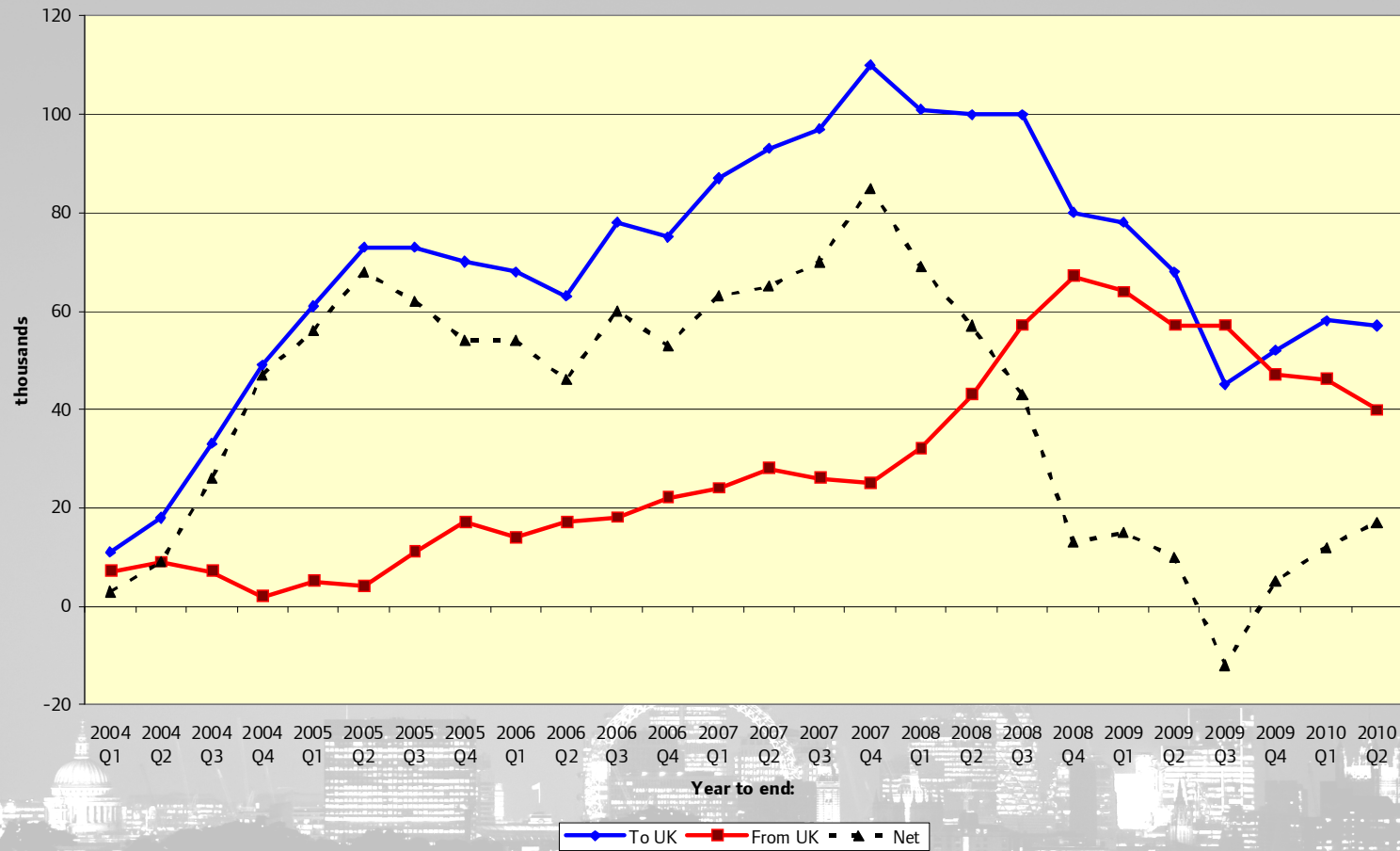
# UK: Gross Flows by Reason (ONSCD Chart)



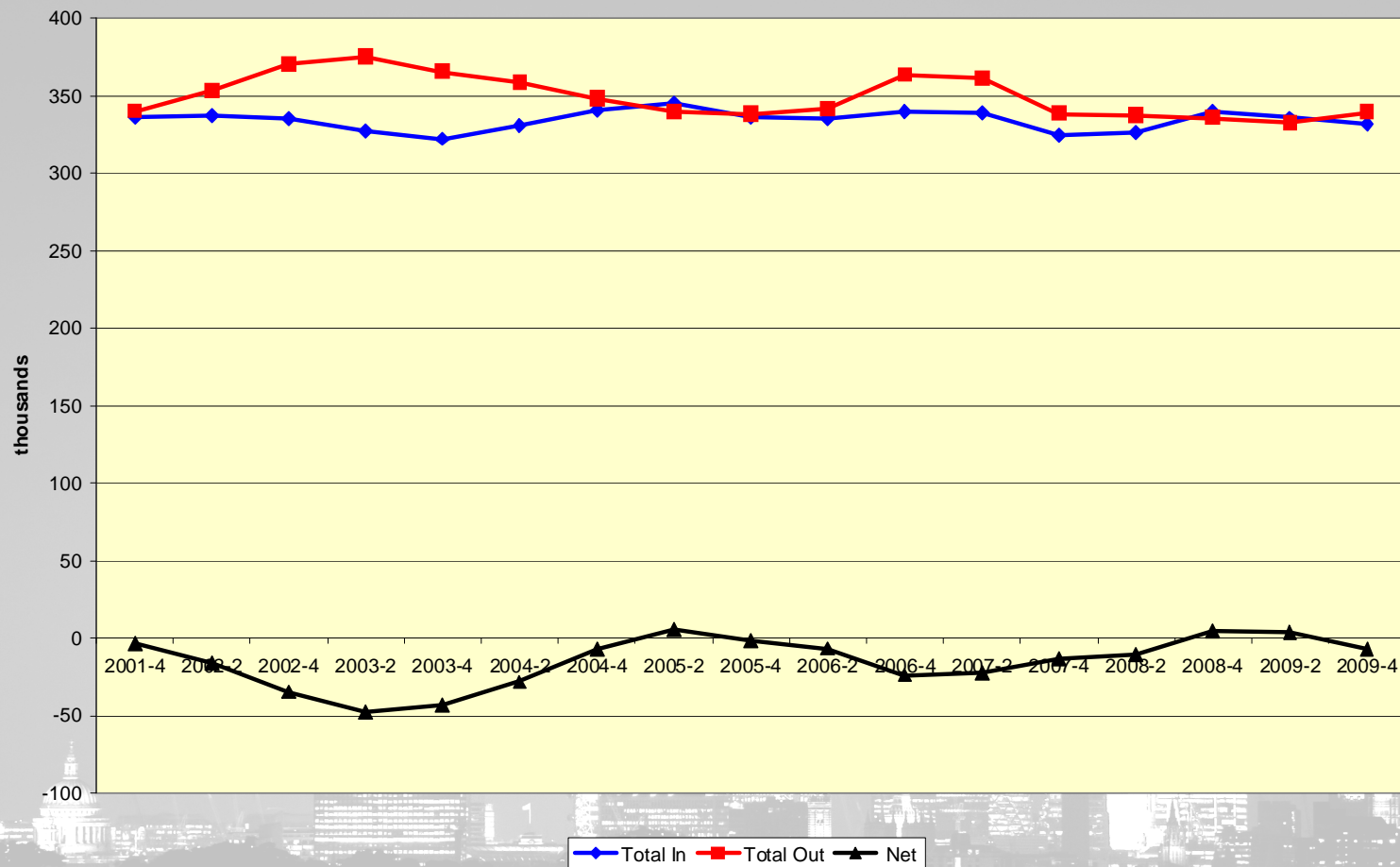
# UK: IPS Trends (thousands)



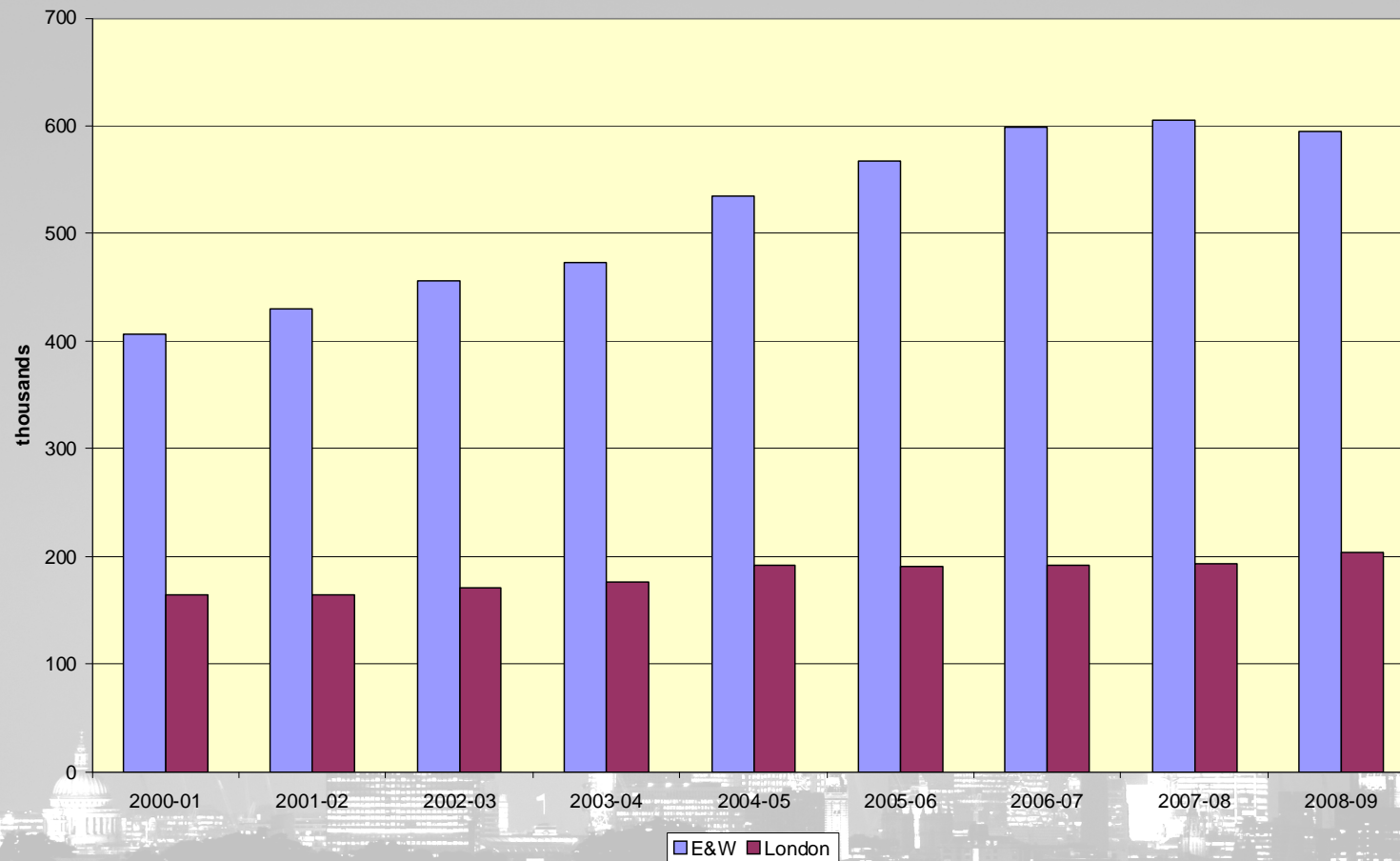
# UK: A8 Migration Trends (IPS)



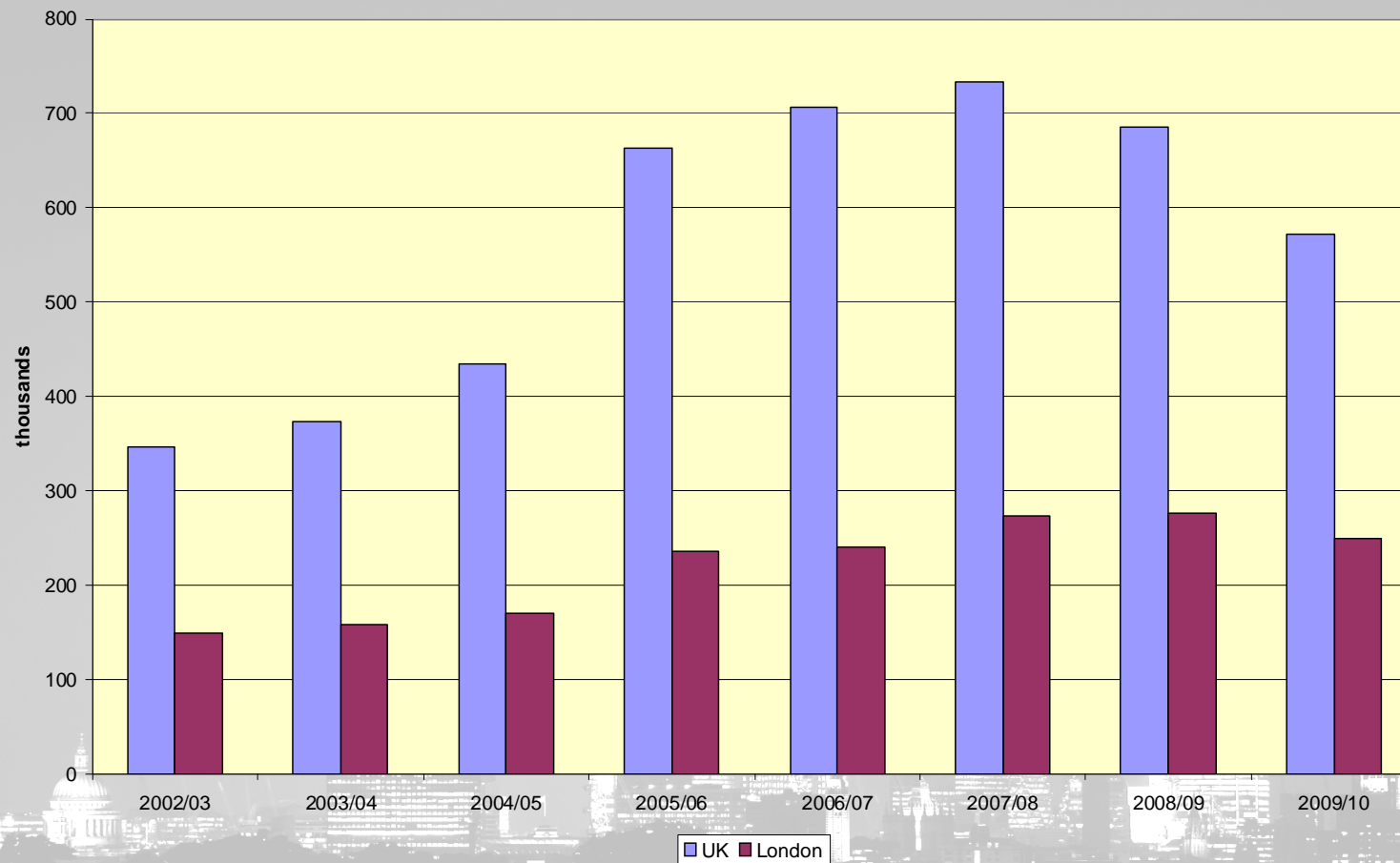
# London: Total Migration Flows



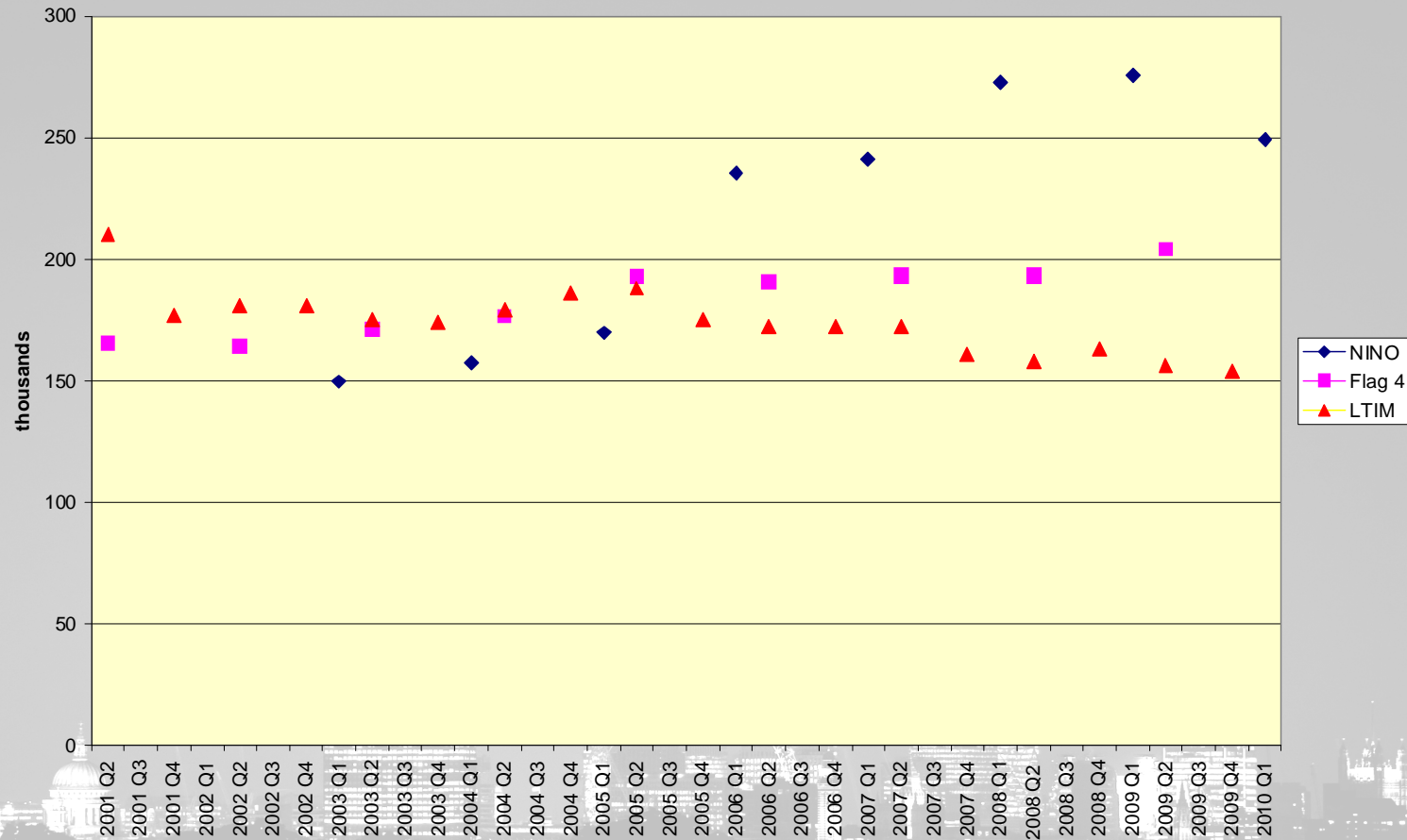
# NHS Flag 4s: London and E&W



# NINos: London and UK



# London 'Inflow' Comparisons





# Conclusions?

- Recession impact seen with internal migration
  - Record inflows
  - Net inflows from beyond 'South East/East'
  - Triple whammy on Reception class demand
  - Retirement moves collapse
- International migration – London going its own way
  - Declining inflow – rising outflow – reduced net inflow
- Consistency of data sources?

# Contact

**John Hollis**

**[John.hollis@london.gov.uk](mailto:John.hollis@london.gov.uk)**

**020 7983 4604**

A grayscale, semi-transparent image of the London skyline at night, featuring the Gherkin, the London Eye, and St Paul's Cathedral.

**GLAINTELLIGENCE**