

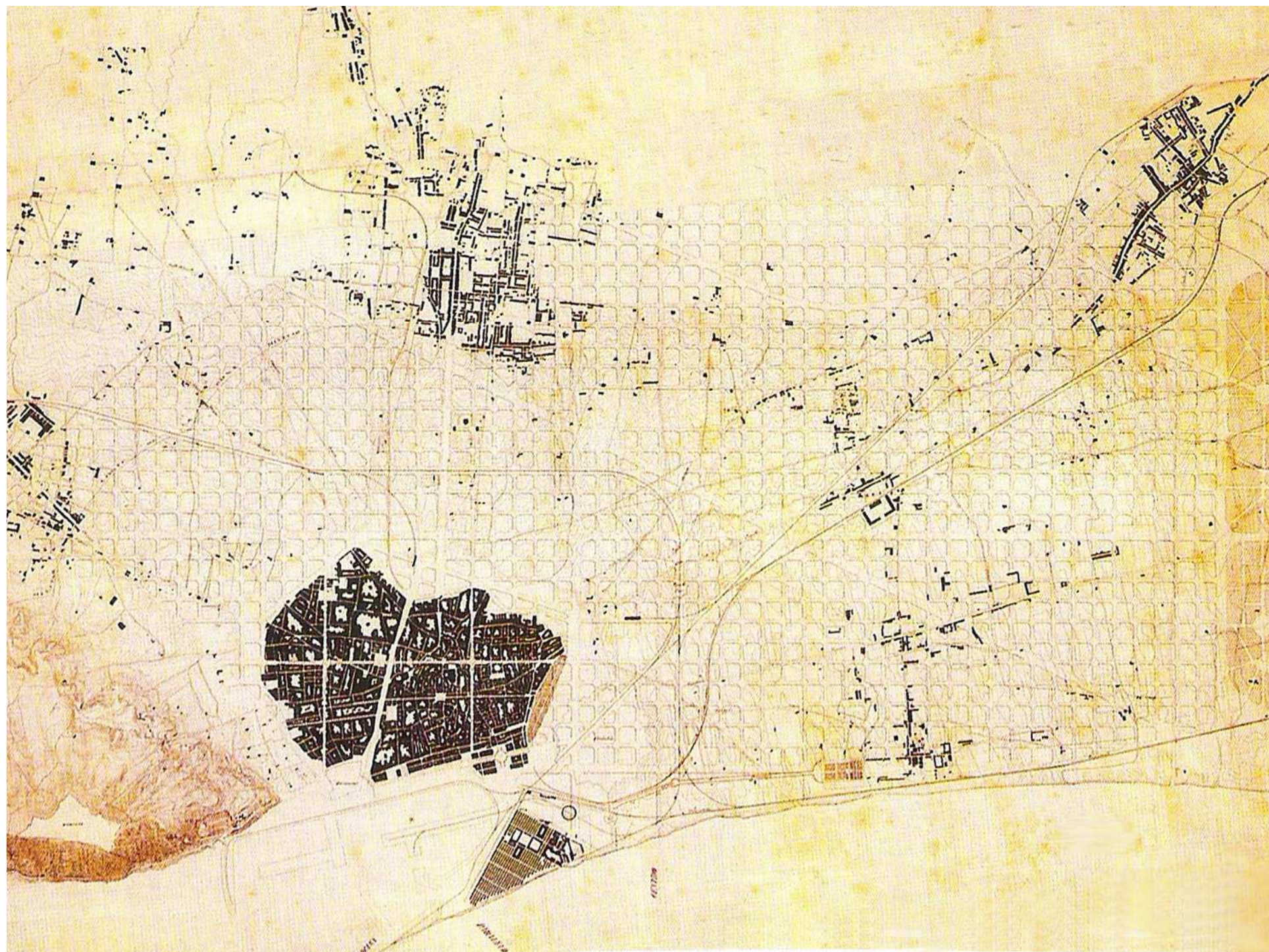
NATURBAN

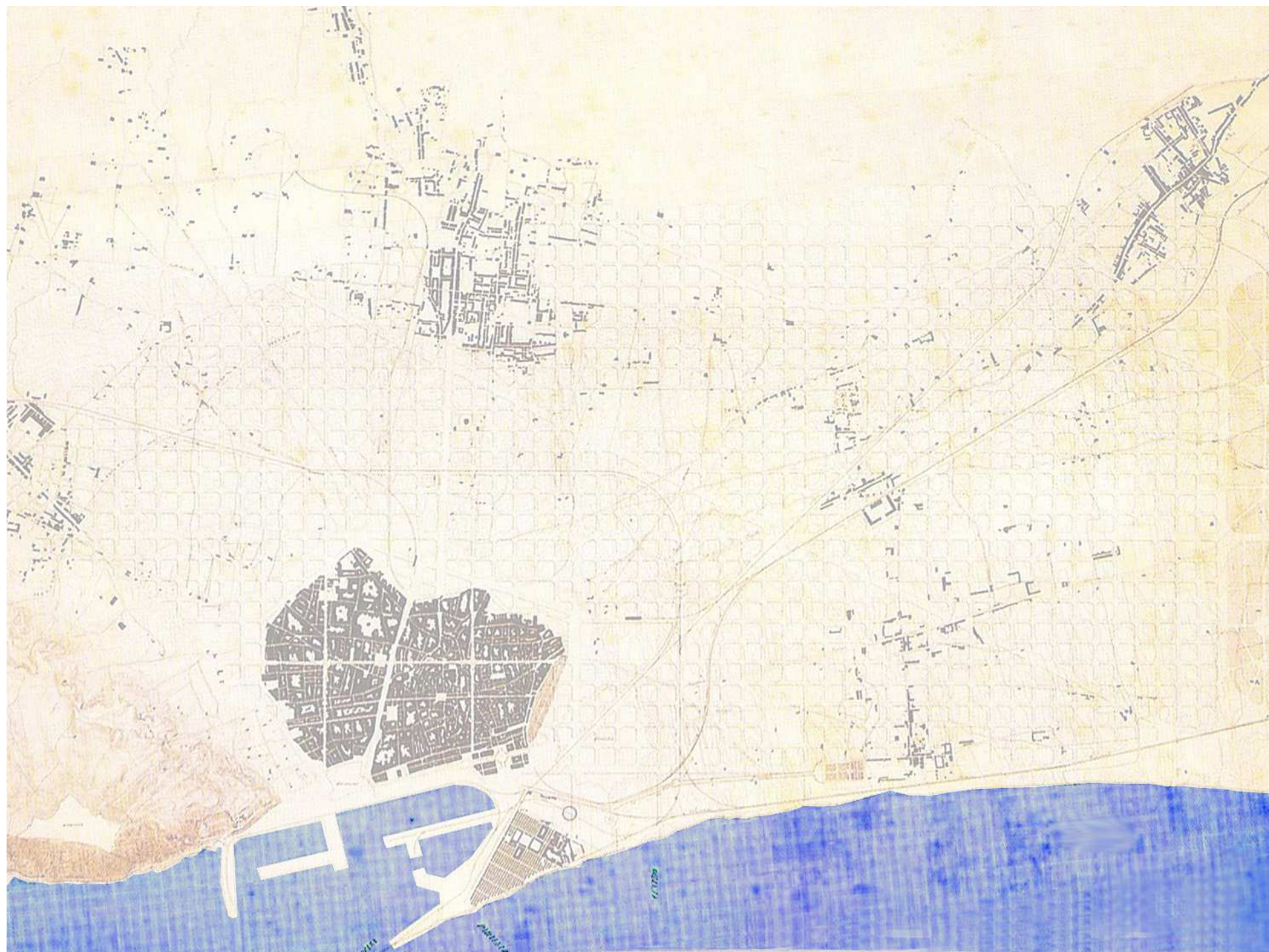
BARCELONA AND ITS NATURAL BOUNDARIES, A REDISCOVERED RELATION

ADOLF SOTOCA, PhD, UPC_BARCELONATECH
TUESDAY, 10 MARCH 2015

CATALAN OBSERVATORY, LONDON SCHOOL OF ECONOMICS AND POLITICAL SCIENCE
SEMINAR: OPENING UP BARCELONA TO NATURE, TRANSITIONS ON THE EDGE







metropolitan
infrastructure

urban services
implementation

citizenship
participation

unprecedented
landscape

city scale
mobility

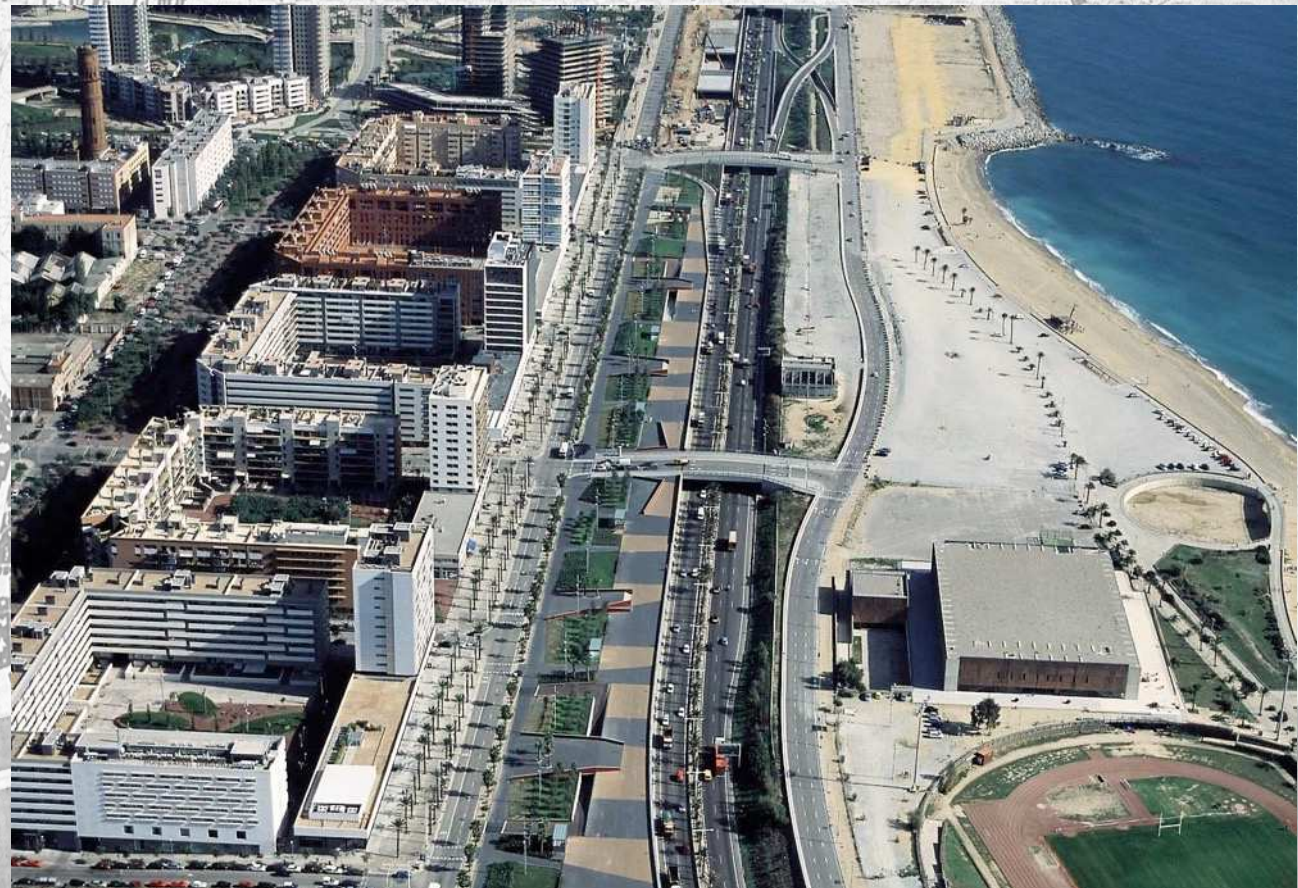
high **standard**
public space

urban fabric
remodelation

facilities
provision

systemic
planning

recreational
space



metropolitan
infrastructure

urban services
implementation

citizenship
participation

unprecedented
landscape

city scale
mobility

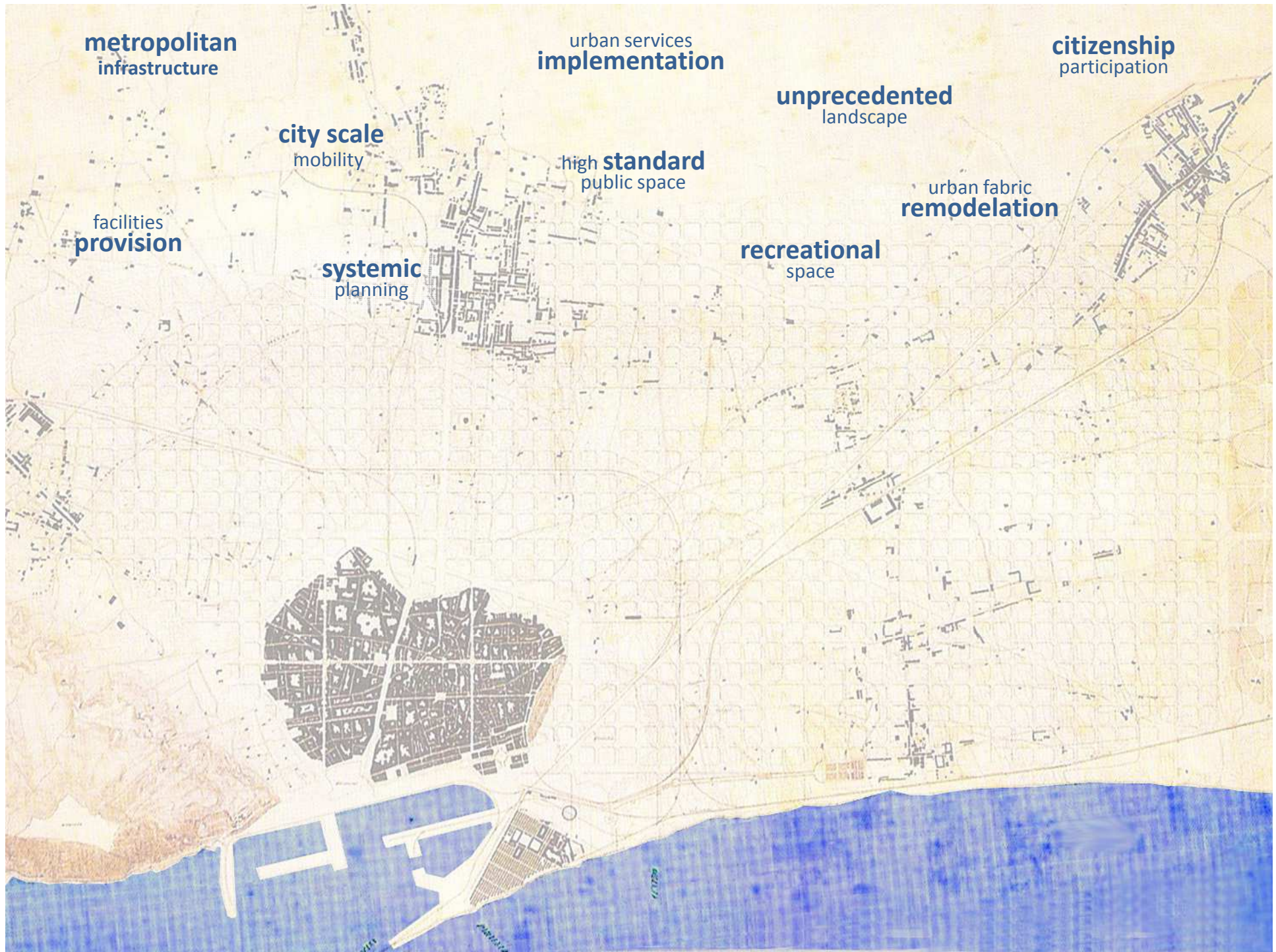
high **standard**
public space

urban fabric
remodelation

facilities
provision

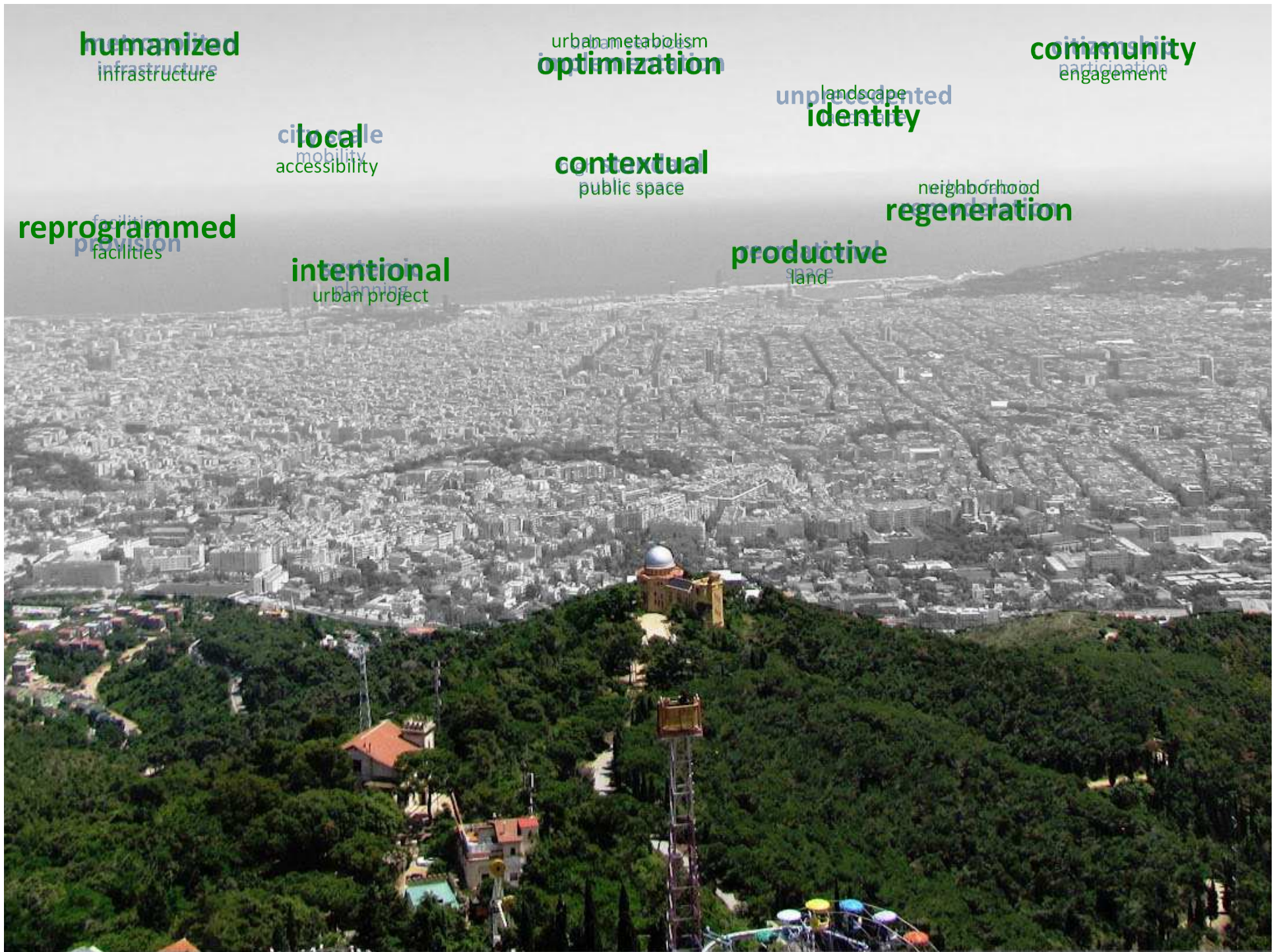
systemic
planning

recreational
space



?





humanized
infrastructure

urban metabolism
optimization

community
engagement

local
mobility
accessibility

contextual
public space

unplanned
identity

neighborhood
regeneration

reprogrammed
facilities

intentional
urban project

productive
land

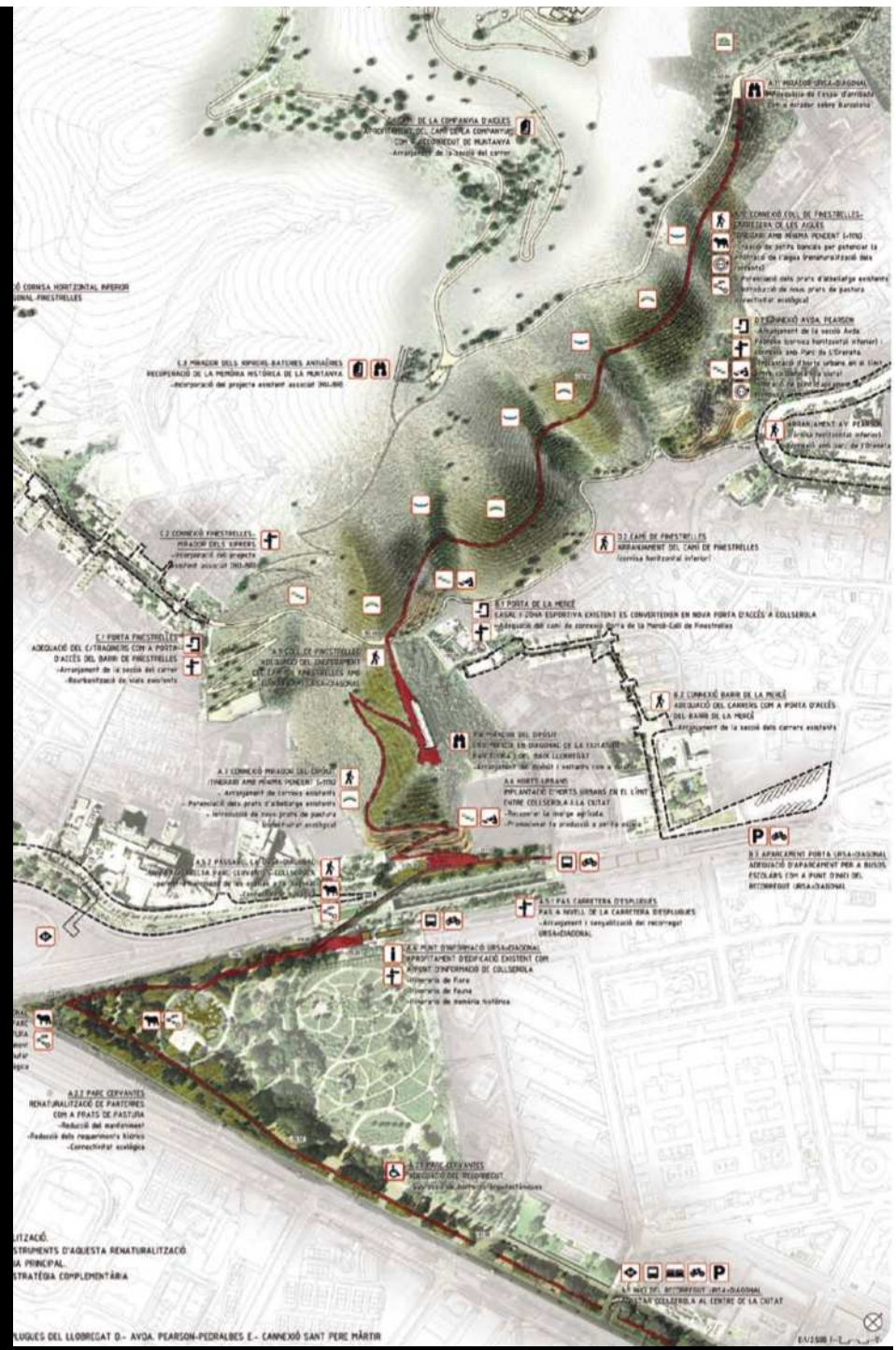
HUMANIZED INFRASTRUCTURE



REPROGRAMMED FACILITIES



A black and white photograph of a hillside with dense vegetation. In the foreground, there are tall, thin grasses and a large, central plant with broad, pointed leaves. The hillside is covered in various types of vegetation, including trees and shrubs. The text "LOCAL ACCESSIBILITY" is overlaid in the top left corner.



CONTEXTUAL PUBLIC SPACE



NEIGHBORHOOD REGENERATION

112

CROSS-TRANSECT 2

L5

[illegible]

"Recorregut durant el qual s'escriu i s'expliquen esdeveniments referits a la varietat de situacions, des del més urbà al més natural"

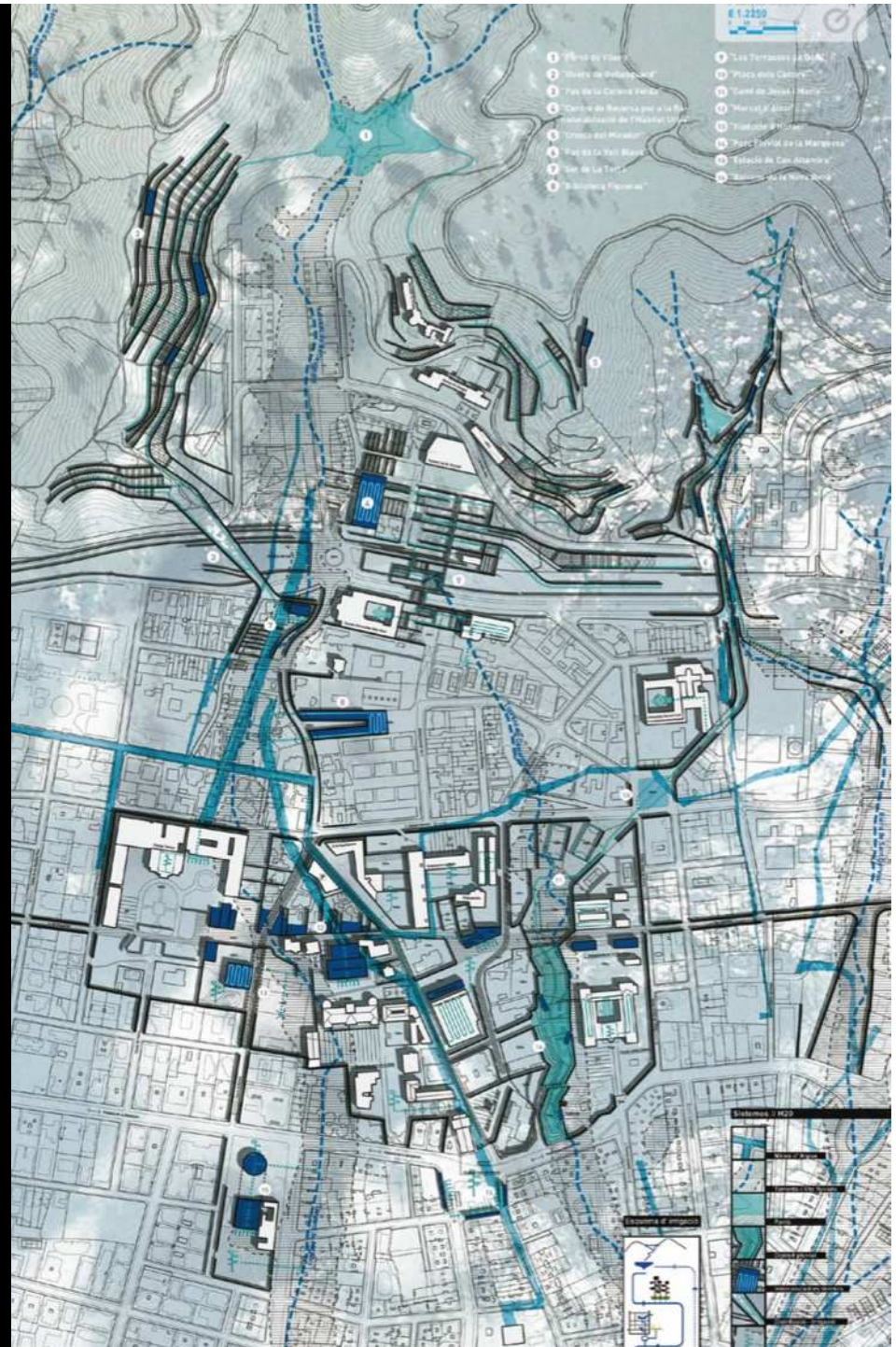
LANDSCAPE IDENTITY



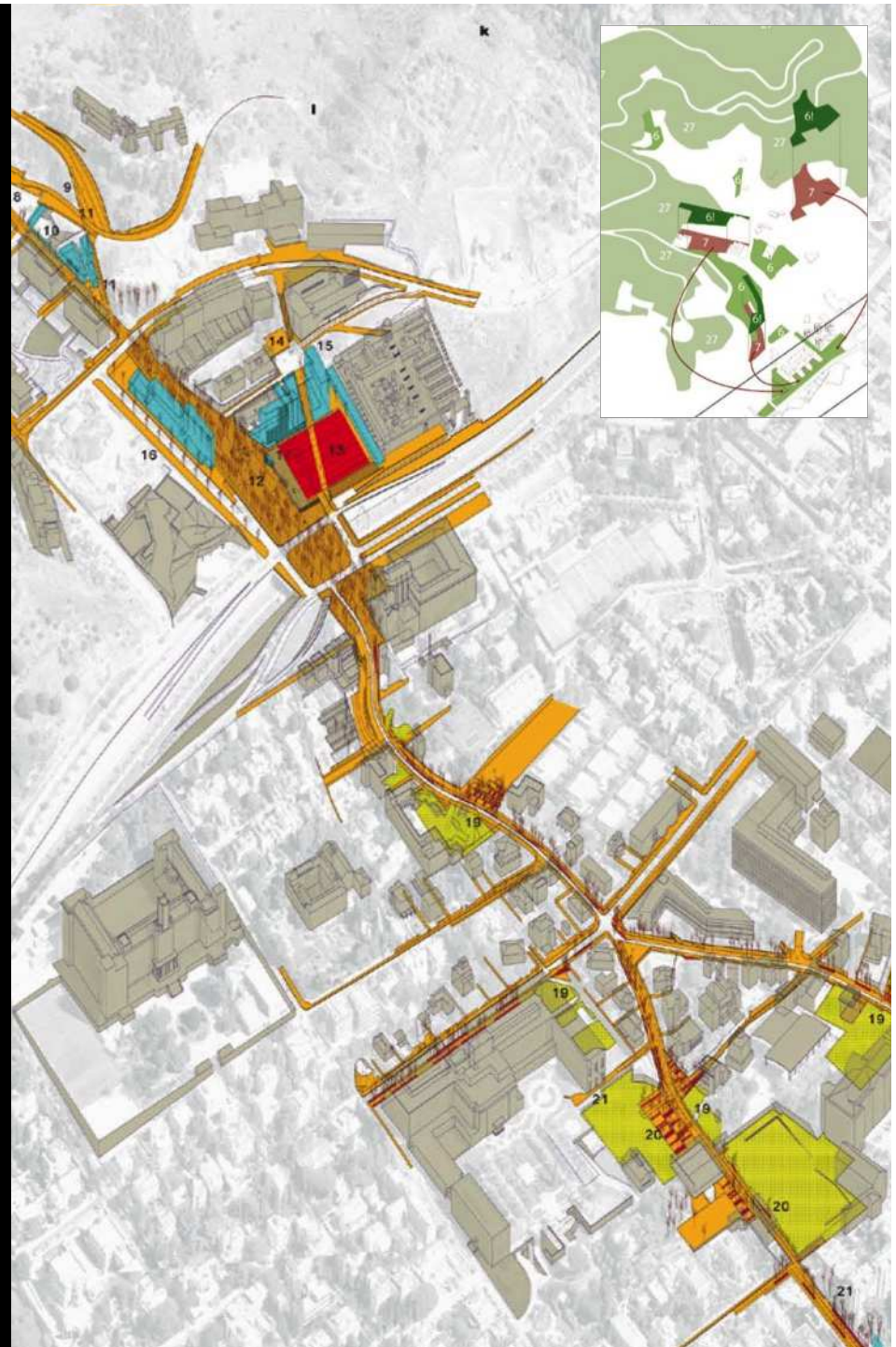
PRODUCTIVE LAND



URBAN METABOLISM OPTIMIZATION



INTENTIONAL URBAN PROJECT



COMMUNITY ENGAGEMENT



D Com gestionem els espais?

Diagnosi

- Tothom té una percepció de la realitat condicionada pel context actual de crisi econòmica.
- El districte és conegut per la densitat d'espais aconseguits per reivindicacions i espais autogestionats de qualitat.
- Existeix la necessitat d'un relleu generacional en el teixit associatiu i reivindicatiu del barri.
- La conservació del patrimoni natural és un valor compartit pels veïns però en l'actualitat no s'està realitzant.
- El territori compta amb iniciatives agro-ecològiques autogestionades com poden ser els horts comunitaris i les experiències de permacultura.
- Existeix una demanda real creixent per poder participar en iniciatives agrícoles comunitàries: horts urbans i rurals.

Criteris d'actuació



Fomentar l'autogestió. Si hi ha disponibilitat social, potenciar la gestió comunitària per a barris més participatius.



Apostar per la cessió d'espais. Regriduir les experiències positives d'autogestió d'espais per a entitats locals.



Fomentar la intergeneracionalitat. Generar projectes i espais plurigeneracionals per a l'intercanvi d'experiències.



Potenciar la col·laboració. Millora de les relacions entre el teixit local i les administracions que gestionen el territori.



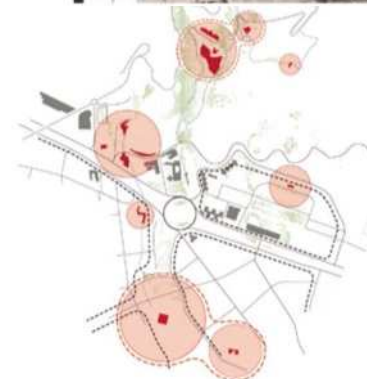
Treballar pel respecte a la natura. Fer sensibilització i formació entorn una convivència respectuosa amb la natura.



Augmentar la ocupació. Creació de llocs de treball als barris i incorporar activitats productives per equilibrar-los.



Apostar per la rehabilitació. Suprar el paradigma del creixement il·limitat i rehabilitar abans que construir de nou.



C Com es relacionen els "barris de muntanya"?

Diagnosi

- Els equipaments esportius són una focus d'activitat molt importants, per tant, són un espai de relació entre els veïns dels diferents barris.
- La construcció dels equipaments previstos en el planejament i la preservació dels ja existents constitueix una prioritat pels veïns.
- Existeix un sentiment identitari dels veïns vers el seu barri i els límits d'aquests són sempre força presents.
- Existeix un moviment important de vianants de recorregut transversal entre els barris de muntanya.
- El cobriment de la ronda ha permès una comunicació més fluida entre Canyelles i la Guineueta i ha generat un espai amb un potencial molt gran que es podria explotar molt més.

Criteris d'actuació



Millorar la connectivitat. Potenciar l'enllaç peatonal entre els espais de centralitat dels barris de muntanya.



Equipar amb proximitat. Mantenir els equipaments propers a les zones residencials per a un ús de proximitat.



Generar punts de trobada. Desenvolupar focus d'activitat en els límits entre barris per a generar usos compartits.



Reduir la contaminació acústica. Aplicar mesures per a reduir el soroll provocat per les vies més transitades.



COMMUNITY ENGAGEMENT



10 REFLECTIONS, 111 PROPOSALS



10 REFLECTIONS, 111 PROPOSALS

The image is a composite. The background is a black and white aerial photograph of a city, likely Santiago, Chile, showing a river (Mapocho) flowing through a valley with hills in the background. Overlaid on this are several elements:

- Top Left:** The text "10 REFLECTIONS, 111 PROPOSALS" in white, bold, sans-serif font.
- Top Right:** A map of the city area with blue lines indicating waterways or proposed routes. Several small inset images show landscape design concepts, including a park with a bridge and a modern building.
- Center:** A large, semi-transparent map overlay showing a network of red and green lines, possibly representing proposed transit or pedestrian routes. A small inset image shows a modern building with a green roof.
- Bottom Right:** A detailed map overlay with orange and yellow lines, highlighting specific areas of interest. Several inset images show landscape design concepts, including a park with a bridge, a modern building, and a park with a bridge.
- Other Inset Images:** Various other small images are scattered throughout, showing different urban infrastructure and landscape design proposals, such as a modern building, a park, and a bridge.

10 REFLECTIONS, 111 PROPOSALS

RENATURALISATION BARCELONA

Engaging Citizens

The urban landscape is not just a collection of buildings and infrastructure, but a living organism that evolves over time. Engaging citizens in the process of urban transformation is essential to create a more resilient and sustainable city. This reflection explores the challenges and opportunities of involving citizens in the process of urban transformation, and the results of the project's citizen engagement activities.

Optimising the Urban Metabolism

The urban metabolism is the process by which the city consumes resources and produces waste. Optimising the urban metabolism is essential to create a more sustainable city. This reflection explores the challenges and opportunities of optimising the urban metabolism, and the results of the project's urban metabolism analysis.

Rediscovering the Landscape

The urban landscape is the result of the interaction between the city and the natural environment. Rediscovering the landscape is essential to create a more sustainable city. This reflection explores the challenges and opportunities of rediscovering the landscape, and the results of the project's landscape analysis.

Recovering Agricultural Uses

Agricultural activity around cities has been gradually and significantly reduced in the last century, mainly due to the pressures of urbanisation and the loss of agricultural land. However, the growing awareness of the importance of agriculture in the urban landscape, and the challenges of distribution and consumption patterns, have opened up new perspectives for the introduction of agriculture in metropolitan areas. Recovering Agricultural Uses is a common approach in many proposals, which is justified both functionally and socially and which translates into a wide range of specific interventions.

THE EDGES OF BARCELONA: FROM THE SEA TO THE MOUNTAINS IN 10 REFLECTIONS

Adolf Sotoca - Oscar Carracedo

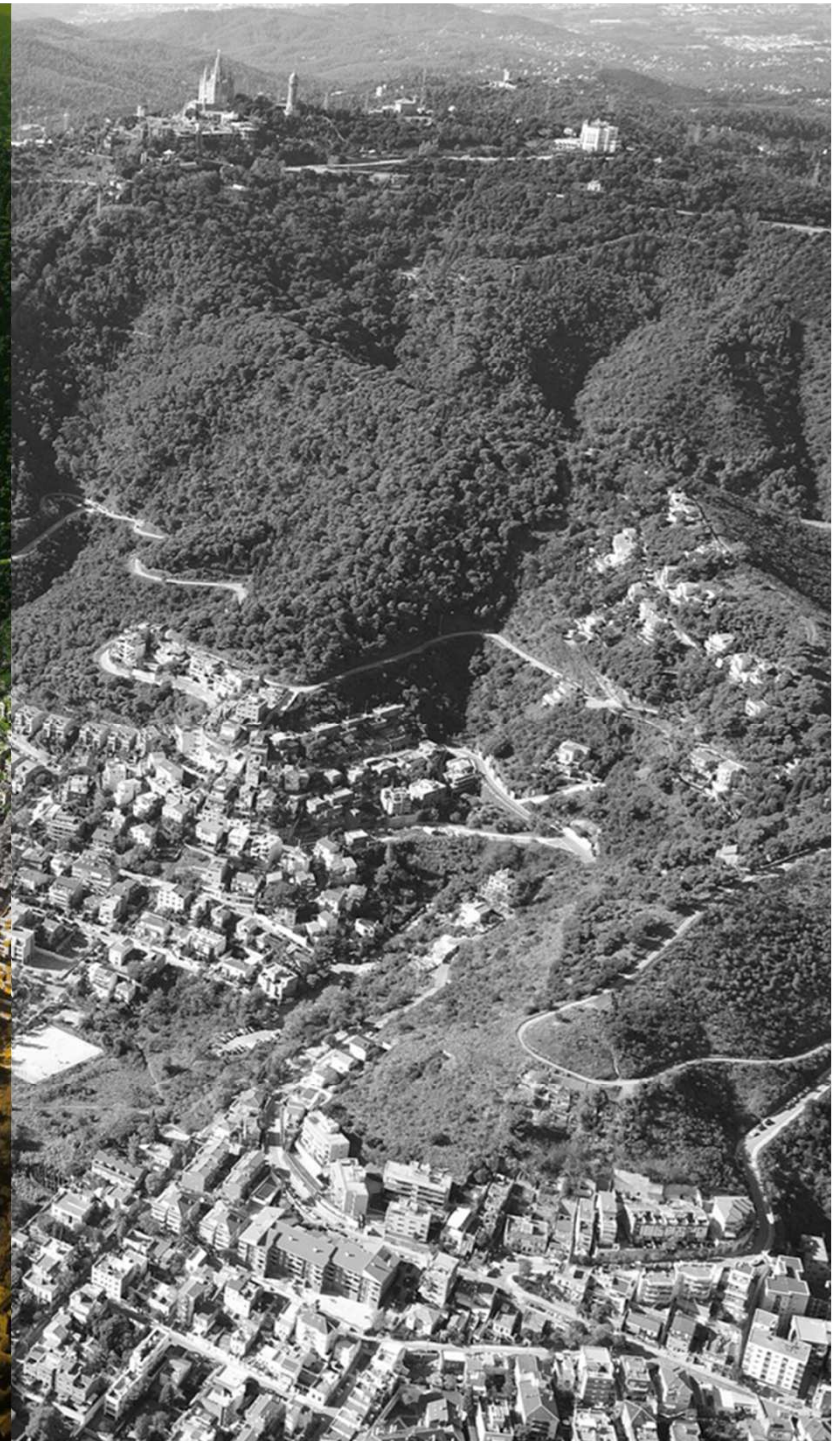
NATURBAN

**BARCELONA'S
NATURAL PARK**
A REDISCOVERED RELATION

10
REFLECTIONS

111
PROPOSALS

IDEAS COMPETITION FOR THE GATES
TO COLLSEROLA NATURAL PARK



Adolf Sotoca – Oscar Carracedo

NATURBAN

**BARCELONA'S
NATURAL PARK**
A REDISCOVERED RELATION

10
REFLECTIONS

111
PROPOSALS

**IDEAS COMPETITION FOR THE GATES
TO COLLSEROLA NATURAL PARK**

Twenty years after recovering its seafront, Barcelona is taking on a challenge that is comparable in its impact and its ambition: reconnecting the city with its mountains. The launch of the "Ideas Competition for the Gates to Collserola Natural Park" marked the beginning of an unprecedented reflection in our city, focused on the transition between natural spaces and the urban fabric. NATURBAN compiles the collective efforts that resulted from the ideas competition and presents the key questions for the future of the city's re-naturalisation. The 112 proposals contained in this volume, in addition to the input from experts regarding ten key concepts, are Barcelona's contribution to the debate on the relationship between the urban milieu and the natural environment in our contemporary metropolis.

With texts by:

Antoni Alarcón, Jaume Barnada, Ramon Bosch, Bet Capdeferro, Oscar Carracedo, Carles Casamor, Andreu Esquius, Ricard Fayos, Carlos Ferrater, Ramon Folch, Teresa Franquesa, Beth Galí, Vicente Gualart, Jordi Mansilla, Josep Mascaró, Laia Mestre, Judit Requena, Maria Sisternas, Adolf Sotoca, Laia Torras and Andreu Ulied.

Published by



With the collaboration of



ISBN: 978-84-96842-62-5



9 788496 842625

Adolf Sotoca – Oscar Carracedo

NATURBAN

BARCELONA'S
NATURAL PARK
A REDISCOVERED RELATION

10
REFLECTIONS

111
PROPOSALS

IDEAS COMPETITION FOR THE GATES
TO COLLSEROLA NATURAL PARK

Twenty years after recovering its seafront, Barcelona is taking on a challenge that is comparable in its impact and its ambition: reconnecting the city with its mountains. The launch of the "Ideas Competition for the Gates to Collserola Natural Park" marked the beginning of an unprecedented reflection in our city, focused on the transition between natural spaces and the urban fabric. NATURBAN compiles the collective efforts that resulted from the ideas competition and presents the key questions for the future of the city's re-naturalisation. The 112 proposals contained in this volume, in addition to the input from experts regarding ten key concepts, are Barcelona's contribution to the debate on the relationship between the urban milieu and the natural environment in our contemporary metropolis.

THANK YOU

With texts by:

Antoni Alarcón, Jaume Barnada, Ramon Bosch, Bet Capdeferro, Oscar Carracedo, Carles Casamor, Andreu Esquius, Ricard Fayos, Carlos Ferrater, Ramon Folch, Teresa Franquesa, Beth Galí, Vicente Gualart, Jordi Mansilla, Josep Mascaró, Laia Mestre, Judit Requena, Maria Sisternas, Adolf Sotoca, Laia Torras and Andreu Ulied.

Published by

With the collaboration of

ISBN: 978-84-96842-62-5



CATALAN OBSERVATORY, LONDON SCHOOL OF ECONOMICS AND POLITICAL SCIENCE
SEMINAR: OPENING UP BARCELONA TO NATURE, TRANSITIONS ON THE EDGE