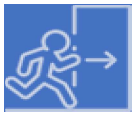


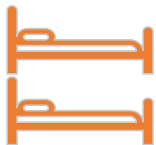
Outcomes*



5.1%



7.1%



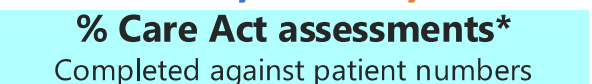
50 beds



1 day



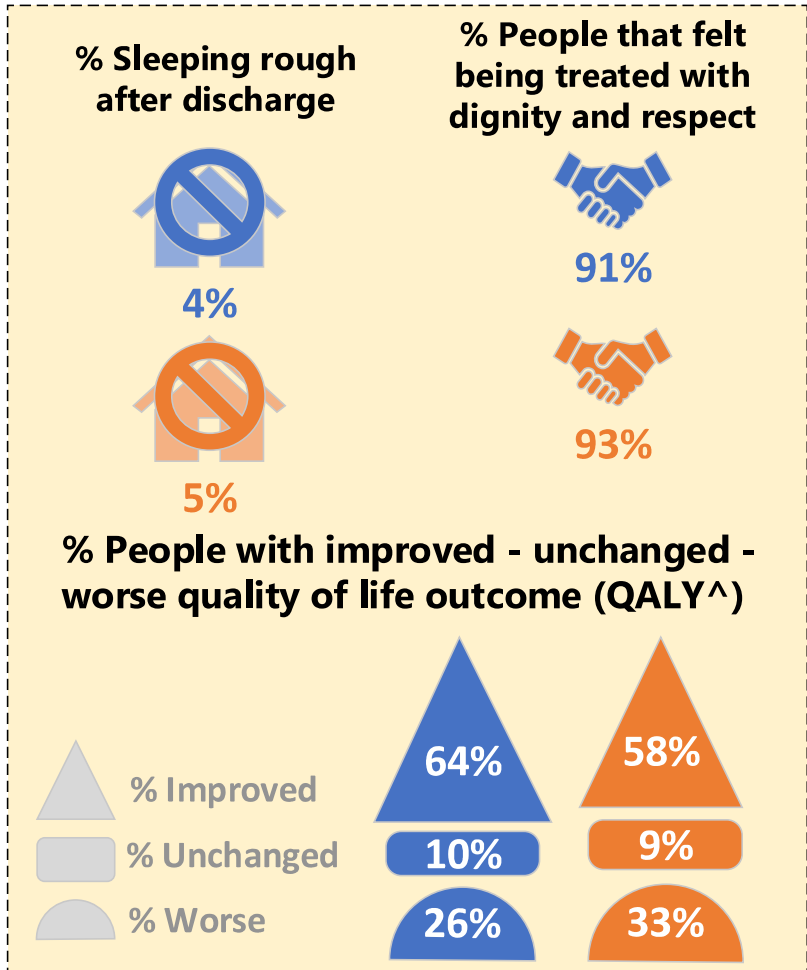
7 days



13.0%



40.5%



Note: The metrics refer to the 10 sites that have provided a complete set of information. More details: <https://www.lse.ac.uk/cpec/research/OOHCm/integrated-management-dashboards>
 *We calculated the total estimate for the entire period 2021-23, rather than the average estimates between the two financial years ^Quality-adjusted life years.