



THE LONDON SCHOOL
OF ECONOMICS AND
POLITICAL SCIENCE ■



DEPARTMENT OF LAW

**MSc Law and Accounting
Programme Handbook**

2016/2017

GENERAL NOTES

Important MSc Law and Accounting Dates		
Michaelmas Term	26 September 2016	Michaelmas term teaching starts
	8 November 2016	Herbert Smith Freehills – Annual Prize Reception
	6 December 2016	Deadline for students to submit long essay title
	9 December 2016	Michaelmas term ends
Lent Term	9 January 2017	Lent term teaching starts
	27 January 2017	1st supervision meeting of long essay to be held by Week 3
	23 February 2017	MSc Law and Accounting Annual Dinner
	24 March 2017	2nd supervision meeting of long essay to be held by end of Lent Term
	24 March 2017	Lent term ends
Summer term	May and June 2017	Examination period
	9 June 2017	Summer term ends
	15 August 2017	Submission deadline for long essay

LSE Term Dates and School Closures - Academic Year 2016/2017

Michaelmas Term (MT)

Thursday 22 September – Friday 9 December 2016 (teaching begins on Monday 26 September 2016)

Lent Term (LT)

Monday 9 January – Friday 24 March 2017

Summer Term (ST)

Monday 24 April – Friday 9 June 2017

The School will also be closed on English public holidays. In 2016/2017 these will be:

Christmas Closure	Thursday 22 December 2016 – Tuesday 3 January 2017
Easter Closure	Thursday 13 April – Wednesday 19 April 2017
May Bank Holiday	Monday 1 May 2017
Spring Bank Holiday	Monday 29 May 2017
Summer Bank Holiday	Monday 28 August 2017

Some facilities, such as the Library, may open on some of these dates. The School will issue updates throughout the year.

Twitter: @LSELaw

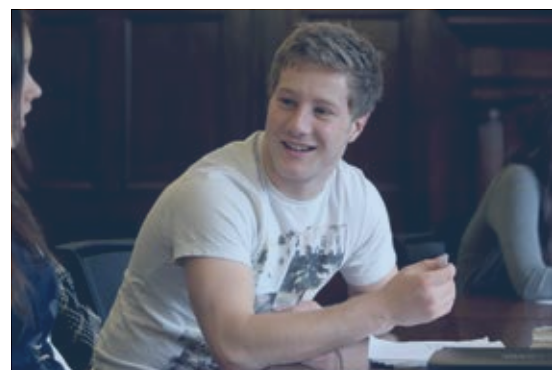
Facebook: facebook.com/LSELaw

Pinterest: pinterest.com/LSELaw

Instagram: Instagram.com/LSELaw

CONTENTS

LSE Law Welcome	4
Programme Director Welcome	5
The MSc Law and Accounting Programme	8
Key Programme Contacts	10
Administrative Information	11
Regulations, Assessment and Grading	15
IT, Moodle and LSE for You	17
Services and Facilities	18
Sources of support for students	19
Appendix 1 – Law Courses	21
Appendix 2 – Accounting and Finance Courses	22





Dear Incoming Student

Welcome to LSE Law at the London School of Economics and Political Science. We are one of the largest and most vibrant departments at LSE, and, together with the Department of Accounting, we are very proud of our specialist and interdisciplinary MSc in Law and Accounting. We hope that you will find this course, the Department and the wider LSE community an exciting intellectual environment for your postgraduate studies.

Starting a new course always involves challenges, but your teachers, the MSc academic advisers and the academic support staff in the Department are here to help. Do ask if anything isn't clear or you would like more advice.

During your time at LSE, make the most of everything that the School and the Departments of Law and Accounting have to offer. I wish you every success in your studies and hope that your year at LSE will be engaging, inspiring and fun.

Professor Jeremy Horder
Head of Department

PROGRAMME DIRECTOR WELCOME



Dear MSc Law and Accounting Class of 2016-17

We welcome you to this degree programme and congratulate you on gaining your place on the MSc.

The London School of Economics and Political Science is one of the world's leading social science institutions and, since the foundation of LSE just over a century ago, the study of law and accounting have been an integral part of the School's mission.

We are confident that this will make your studies an enriching experience. You will be challenged and stimulated by the MSc programme, which will provide you with a highly marketable qualification as well as a firm intellectual grounding for your career.

There will be approximately 30 MSc students this year, studying full-time and part-time. You will find that the great diversity of backgrounds and traditions among your fellow students is one of the most exciting aspects of graduate studies at LSE.

We wish you great success in your studies here at LSE and hope that you will have a stimulating, productive and extremely enjoyable year.

Dr Carsten Gerner-Beuerle (Law Department)
MSc Law and Accounting Programme Director

ABOUT LSE LAW

LSE Law is one of the world's elite law schools. Many of our academics have globally leading reputations. In the 2014 Research Excellence Framework, for instance, LSE Law had the highest percentage of world-leading publications of any UK institution. It enjoys a uniquely privileged international community which attracts academics and students from all over the world.

LSE Law owes much of its distinctive character to its location within Europe's leading school of social sciences. It is well known both for its interdisciplinary approaches to legal scholarship and its contextual approach to legal study and teaching. Academics at LSE believe that to understand the law, its function and effects, it is essential to place it within the political, social and economic context within which it is formed and operates.

The Department organises a rich and diverse series of public lectures in which students are encouraged to play an active part. Most recently LSE Law academics were actively involved as panellists in events with Aung San Suu Kyi, the Dalai Lama and Judith Butler.

The identity of LSE Law is inextricably linked to its geographical location in the heart of UK legal life. Our campus is adjacent to the Royal Court of Justice and Lincoln's Inn, one of the four Inns of Court of which all barristers must be members. It is a short walk away from the Houses of Parliament, the offices of the largest global law firms, and regulatory bodies such

as the Takeover Panel and the Financial Reporting Council. To study law at LSE is to study the discipline within walking distance of the several processes through which law and regulation is made, interpreted and applied. This brings the study of law at LSE alive in a truly unique way.



ABOUT ACCOUNTING

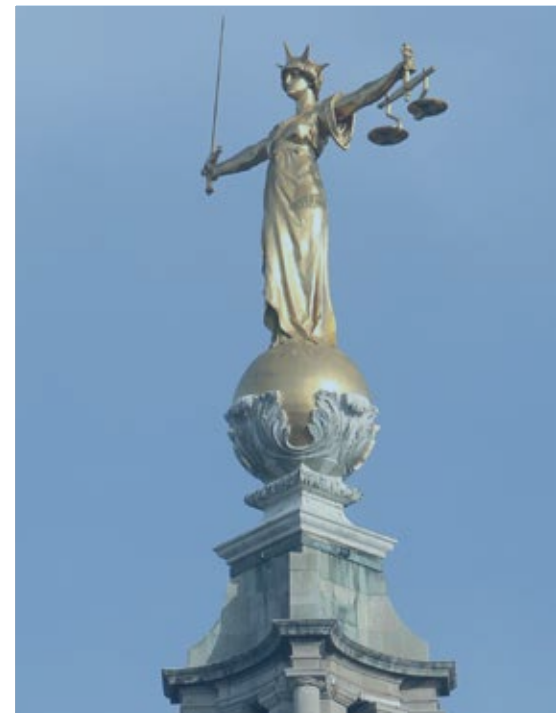
The Department of Accounting is one of the oldest accounting departments in the world and it admits in excess of 200 graduate students each year.

We enjoy a pre-eminent reputation for the excellence of our teaching and research and for our leading role in public policy issues. We are top in the UK for our BSc Accounting and Finance programme and rank fourth in the world in the 2016 QS World University Rankings by Subject.

We maintain that the educational experience is enhanced by effective student-faculty ratios as well as by the diversity and quality of both students and faculty at LSE from around the world.

The department hosts an active seminar series, annual academic/practitioner conferences, and is the home of the Centre for the Analysis of Risk & Regulation (CARR). The department also has close links with other departments and research centres in the School, offering a supportive environment for the exchange of ideas among faculty as well as with practitioners and regulators within the rich context of the social sciences, which is the hallmark of the School's intellectual tradition.

A number of our faculty are involved in editorial roles of leading scholarly journals, as well as in leadership roles of various academic organisations. The department also actively engages with several professional and regulatory bodies.



THE MSC LAW AND ACCOUNTING PROGRAMME

Degree Requirement

The MSc in Law and Accounting is a one year full-time course. The course officially ends on 30 September 2017, ie, the year following registration.

This joint degree is a full/part-time interdisciplinary programme for qualified lawyers, accountants and other suitably qualified individuals. It aims to provide a broader academic context for the understanding of the technical aspects of both law and accounting.

In order to meet the requirements of the Law and Accounting degree programme, students are required to successfully complete courses to the value of four units as follows:

Paper	Paper details	Unit value
1	Core course LL440 Corporate Accountability: Topics in Legal and Accounting Regulation	1
2	<i>One of the following Accounting course options (a or b):</i> a) Students with a background in accounting take AC420 Financial Reporting in Capital Markets. b) Students with no prior knowledge of accounting take AC490 Management Accounting, Decisions and Control which provides students with an introduction to issues of accounting information and cost management, managerial decision-making and performance measurement. <i>Plus</i> AC491 Financial Accounting, Reporting and Disclosure which provides an introduction to financial accounting, and highlights aspects of reporting that are important to users of financial information.	1 0.5 0.5
3	Two 0.5 unit courses in Law. Please choose 2 courses from the list of Law courses in Appendix 1	0.5 0.5
4	Courses to the value of 1 unit. Please choose from the list of courses in Appendix 1 or Appendix 2	1
Total		4 units

1. Core Course

LL440 – Corporate Accountability: Topics in Legal and Accounting Regulation

This is the core course for the programme and is compulsory for all students. Students will be expected to attend all seminars, and the methods of assessment are designed to cover the entire course. The course is designed specifically for this programme. Part-time students should take this course in their first year.

Each session will be led by an interdisciplinary team. Key readings are prescribed and most are available in a course pack which will be provided on registration. A variety of teaching methods will be used but the basis of the course is discussion and the sharing of ideas. Therefore, students will be expected to have studied the readings in advance of the seminar and to be prepared to participate in discussion. Seminar outlines will also be provided.

lse.ac.uk/resources/calendar/courseGuides/LL/2015_LL440.htm

Assessment:

The course will be assessed by both exam and essay.

A two hour exam in May/June requires three questions to be answered and is worth 60 per cent of the marks. A Long Essay of up to 10,000 words is worth 40 per cent of the marks. The deadline is listed on the inside cover and should be submitted to the Postgraduate Programme Administrator, NAB 6.14.

Long Essay topics will be chosen at the end of Michaelmas Term. Students will choose their own topic, which should be based on the core course and so have some interdisciplinary content. Topics will be subject to the approval of the LL440 Course Convener, who will allocate supervision amongst the core course teachers. There will be two meetings between Long Essay supervisors and supervisees: the first is to discuss the topic selected and the second is to discuss progress. Both meetings should be completed by the end of Lent term.

Students are responsible for arranging appointments within the prescribed time frame with their Long Essay supervisor and ensuring that they allow the supervisor adequate time for reading and commenting on any materials which they wish to discuss in the meetings. Students should also leave ample time for preparation of the final version of the Long Essay before the deadline. Note that Long Essay supervisors have many other duties so may not be able to provide feedback on submitted material in less than one week. Teachers may not be available outside term time so careful planning of meetings and the work timetable by students is essential. Further details will be provided about the Long Essay (which forms part of the core course) towards the middle of the Michaelmas Term. Please note that Long Essays must be typed. A full guide to the LL440 Long Essay will be available on the LL440 Moodle page.

2. Accounting Course(s)

You will take either (a) or (b) depending on your previous experience:

(a) Students with a background in accounting take the course:
AC420 Financial Reporting in Capital Markets (1 unit)

lse.ac.uk/resources/calendar/courseGuides/AC/2015_AC420.htm

(b) Students with no prior knowledge of accounting take the following two courses:

AC490 Management Accounting, Decisions and Control (0.5 units)

lse.ac.uk/resources/calendar/courseGuides/AC/2015_AC490.htm

and AC491 Financial Accounting, Reporting and Disclosure (0.5 units)

lse.ac.uk/resources/calendar/courseGuides/AC/2015_AC491.htm

3. Law Courses

The Law courses listed in Appendix 1 have been selected as being those most suitable for combination with the other two compulsory papers. Please choose two half unit courses from Appendix 1.

You are recommended to choose your law courses from this list. Some Lent term courses build on specific courses from Michaelmas term. If your background is not in law it may be advisable to choose two half units that are connecting to each other in that way.

In some exceptional cases, for example where students have a specific interest or experience in an area of law and an appropriate background, permission may be sought from your Academic Adviser in the first instance, in consultation with the course teacher, to take an alternative LSE LLM course.

4. Law, Accounting, Finance or Other Course(s)

You are required to complete either one full unit course or two half unit courses from the lists in Appendix 1 or Appendix 2.

There is a wide choice of subjects for this paper. We recommend that you take one of the papers specifically listed under Appendix 1 or Appendix 2, which have been selected to fit with the aims and objectives of the course. We appreciate, however, that students on this programme may have very varied requirements and so we may be prepared to consider the taking of other options, but only where a strong case for wishing to take them is made to your Academic Adviser and the Programme Director.

KEY PROGRAMME CONTACTS



Miss Mary Wells

MSc Law and Accounting Administrator

Room: NAB 6.14

Email: Law.Msc.Law&Accounting@lse.ac.uk

Tel: 020 7106 1227

Core Academic Staff

	Academic	Contact details
Programme Director Deputy Chair of Exam Sub-board	Dr Carsten Gerner- Beuerle	Email: c.gerner-beuerle@lse.ac.uk Department of Law Room: NAB 5.08
LL440 – Core Course Convener Chair of Exam Sub-board	Dr Julia Morley	Email: j.e.morley@lse.ac.uk Department of Accounting Room: OLD 3.09
	Academic	Contact details
	Professor Bjorn Jorgensen	Email: b.n.jorgensn@lse.ac.uk Department of Accounting Room: OLD 2.17
	Professor David Kershaw	Email: r.d.kershaw@lse.ac.uk Department of Law Room: NAB 7.16
	Professor Richard Macve	Email: r.macve@lse.ac.uk Department of Accounting Room: OLD 3.20
	Dr Eva Micheler	Email: e.micheler@lse.ac.uk Department of Law Room: NAB 7.35
	Mr Christopher Noke	Email: c.noke@lse.ac.uk Department of Accounting Room: OLD 3.29
	Professor Sarah Paterson	Email: s.paterson@lse.ac.uk Department of Law Room: NAB 6.06

Fuller biographies of staff members can be found at:

lse.ac.uk/collections/law/staff/staff-firstpage.htm

lse.ac.uk/accounting/facultyAndStaff/faculty.aspx

ADMINISTRATIVE INFORMATION

Advice and feedback sessions

Teaching staff hold weekly term-time advice and feedback sessions in connection with each course they teach. This represents a means of additional guidance and support to individual students taking their course(s), and may be used for queries on assessed coursework. To book an appointment with an academic in the Department, please log into LSE for You and click on the "Office Hours" application. Office hours of Department of Accounting academics are published on the Departmental website. Most sessions are drop-in and do not require an appointment.

Language Grants

The Law department will be offering limited grants for Law students who wish to take a modern foreign language course at the LSE Language Centre. These grants are for the standard certificate courses listed on the Language centre website at a cost of £240. For details see:

lse.ac.uk/language/ModernForeignLanguages/Certificate/MFLCertificateHome.aspx

Further information will be sent by the administration

Print accounts

The Department adds £60 of funds to your print accounts (part-time students will receive £30 print funds). This will allow you to choose what materials you print and what materials you read on screen. It also allows us to save some trees! The funding will be added to your print accounts by the end of October 2016. This will happen automatically. You do not need to do anything. Please note

that balances remaining at the end of the academic year are non-refundable.

Your First Week

In your first week at LSE, please make sure that you register for your degree programme. Information about registration can be found at:

lse.ac.uk/intranet/students/registrationTimetablesAssessment/Registration/Programme/Newstudents/home.aspx

It is essential that you register before teaching begins, as you will not be able to receive teaching until you are a registered student.

Academic Adviser

By the end of Welcome Week you will have been allocated an academic adviser. Your Academic Adviser is your link with the School and will advise you on course selection and other academic matters affecting your time at LSE. You are expected to see your Academic Adviser at least once a term – see the LSE Code of Practice for Taught Masters Students:

lse.ac.uk/resources/calendar/academicRegulations/codeOfGoodPracticeForTaughtMastersProgrammesTeachingLearningAndAssessment.htm

It will be your Academic Adviser who will normally provide references in the future and you should make sure you keep him/her informed about your progress and any problems you are experiencing. In particular, you should tell your Academic Adviser about any matters such as illness that may affect your work.

Courses

During the first two weeks of Michaelmas Term, you may wish to sample a range of courses from the approved Law and Accounting course options in Appendices 1 and 2 in order to find out more about the subject and the approach that the course teachers propose to adopt. Should you have questions about a particular course, then the most efficient strategy is to put them to the course teacher during Welcome Week or during the very early stages of the course, ideally in week 1. You can also seek the advice of your Academic Adviser, and/or other academics in the Law and Accounting departments.

Choosing courses

Law Options

Details of syllabuses and content of all graduate courses offered at LSE are available online at:

lse.ac.uk/resources/calendar/courseGuides/graduate.htm

Law graduate courses are identified by the "LL4" code.

Accounting courses are identified by the "AC4" code.

More detailed information regarding course choice can be found at:

lse.ac.uk/intranet/students/registrationTimetablesAssessment/Registration/Course/home.aspx

Auditing Courses

You may wish to audit some courses which are not part of your programme, and for which you will not gain credit. You may audit the lectures of any courses in the School in which you are interested, subject to the approval of the teacher responsible. But you may not normally attend seminars or follow-up seminars/classes if you are not registered for the relevant course.

It is courteous to introduce yourself to the teacher responsible for any course you intend to audit regularly.

Making the Choice

In deciding on your course choice, please keep the following in mind.

Your course choice is subject to approval by the MSc Programme Director, who will monitor, for example, the balance of courses between Lent Term and Michaelmas Term. If your selection is unbalanced (more courses taken in one term than another) it may not be approved. The MSc Programme Director will also check that your course choices meet the programme regulations and may request further information as to why you are requesting such a choice.

Course Capping: Controlled Access

All Law Department courses (courses with an LL4 code) are subject to the "controlled access" procedure and are limited to seminar groups of 30 students. This is designed to ensure that groups

allow for discussions between teacher and students. In order to maximise your chances of being enrolled in the courses which you wish to study, it is imperative that you apply to enrol in controlled access courses as early as possible.

The controlled access procedure requires that you request permission to enrol in the course through the Graduate Course Choice application on [LSE for You](#).

Postgraduate Law students have priority access to LL4 courses (so long as these courses fit in with programme regulations) and will be accepted by Course Conveners, on a “first-come, first-served” basis, from Monday of week 1 until 5pm on Friday of week 1. Thereafter, access to “controlled access” courses operates on a “first-come, first-served” basis to all students. Access to courses closes at 12:00 on Monday of week 3.

While every effort is made to avoid overlap of courses, occasionally a clash may be unavoidable due to interdisciplinary nature of this programme. Students are required to check these details before selecting courses.

Seminar sign up

Students are required to enrol for follow-up seminar groups and seminars with more than one group. This is done through the “Seminar Sign Up” facility on [LSE for You](#). More information on “Seminar Sign Up” is available at:

lse.ac.uk/intranet/students/registrationTimetablesAssessment/Registration/Course/Graduate/pgcoursechoice.aspx

Note: the “Seminar Sign Up” system operates in parallel with the Graduate Course Choice system. Where a course requires that you apply for entry through the Graduate Course Choice system (all law courses) and takes the form of weekly parallel seminars or lectures and follow-up seminars, you need to apply first for entrance to the course through the Graduate Course Choice system. If you are accepted on to the course, then the Seminar Sign Up System will be open to you, and you can register for a particular parallel seminar or a follow-up seminar group, as appropriate.

Please note that we may reallocate you to a different seminar/follow-up seminar group for the term/year, where timetabling considerations make this necessary.

You need to attend the seminar/follow-up seminar group to which you are assigned. Our performance monitoring and attendance record systems are based on the group to which you are assigned. Failure to attend your group may therefore impact negatively on your performance record.

Registering Choice of Courses

Course choice opens for browsing during Welcome Week so that you can get used to the system however you will not be able to make any choices during this period.

You will be able to formally register your course choices online through [LSE for You](#) from the end of Welcome Week. The deadline for you to formally register your course choices online 12:00 on Monday of week 3 of the Michaelmas Term.

The MSc Programme Director will authorise all course choices by the end of week 3 of the Michaelmas Term. Please check that your courses have been approved.

Once course choices have been approved they cannot be changed online. If you wish to make late changes, you need to request permission from the MSc Programme Director. Changes will be processed directly by Student Services, subject to proof of permission.



Registering for Moodle

All Law and Accounting graduate courses have a Moodle site. Students are automatically enrolled on Moodle courses based on LSE for You course choices.

Lent Term Course Choice Re-opening

Course choice opens again briefly before the start of Lent Term.

You are allowed to change one Lent Term half unit for another during the first week of Lent Term provided that:

- (i) The new course is within the MSc Law and Accounting approved courses in Appendices 1 and 2.
- (ii) The newly chosen half unit course is not oversubscribed; and
- (iii) You obtain the approval of the course convener of the half unit you wish to join.

Any Lent term course changes that do not meet all three criteria listed above require special permission by the MSc Programme Director.

If you wish to amend your course choice after the online system has been switched off, you will need to request this via a "late course change" form (available from the Student Services Centre).

For more information please see

lse.ac.uk/registration

Teaching Teams, Seminars and Lectures

The relevant Course Guide and the Timetabling page for the course set out the teaching method employed. The Course Guides are available at:

lse.ac.uk/resources/calendar/courseGuides/graduate.htm and the Timetabling page is available at lse.ac.uk/intranet/diaryAndEvents/timetables/home.aspx

Getting the Most from Seminars

We regard active student participation in seminars and follow-up seminars as a central element of our MSc programme. Teachers will expect that you are prepared and ready to engage in the discussions. The more you engage with this form of teaching, the more you will gain from the MSc experience.

Reading lists for individual courses, and in some cases course materials, will be provided either at the start of a course for the entire course, or periodically during the year. All MSc courses are also supported by Moodle sites on which course teachers place course materials.

Your attendance at seminars and follow-up seminars is monitored through the LSE for You system by course teachers. A brief comment on your performance is recorded at the end of the Michaelmas and Lent Terms. Academic Advisers also make a general comment on your performance at the end of these Terms.

Independent Learning

Remember – the teaching in seminars, lectures and follow-up seminars is only the tip of the iceberg in terms of the work you are required to do as a graduate student. Most of your work will involve independent learning, individually or in informal groups, not formal teaching.

The teaching you receive provides useful guidelines and stimulus for your studies, and opportunities for investigating and resolving difficult points. It is not a substitute for independent study.

Moreover, seminars, lectures and classes will not necessarily cover the whole syllabus; you will be expected to manage this by extensive private reading.

The Summer Term

There is usually no formal teaching for graduate students during the Summer Term. Teachers hold revision classes over this period, and you are expected to remain in London during this period.





Extracurricular Events

LSE and both the Law and Accounting Departments organise a large number of events throughout the year that are well worth attending. They are designed to provide background and context to the subjects you have chosen to specialise in. They also help to learn about areas and topics that you do not yet know very much about. Use them to broaden your horizon and develop an understanding of current debates across a wide range of topics.

The following events are of particular interest to Law and Accounting students:

LLM specialist seminar series: LLM specialist seminars are designed to focus on current issues and complement the existing offering of courses. The seminars are organised by area of interest. There are four series:

- Financial, Corporate and Commercial law;
- European Public Law Theory,
- IT, Media and Communications Law
- Public International Law

Information on current events organised in this context can be found on Moodle. To receive regular updates, please subscribe to the course code LL4A1.

The Legal Biography Project is a forum for research and events on the lives and careers of famous legal minds. More information about the project and information about events is available from:

lse.ac.uk/collections/law/projects/legalbiog/lbp.htm

The Accounting Department advertises events on lse.ac.uk/accounting/news/Home.aspx and lse.ac.uk/accounting/Seminars-and-Workshops/Forthcoming-Seminars.aspx

The Department of Finance advertises events on: lse.ac.uk/finance/news/Home.aspx

LSE public events can be found on lse.ac.uk/publicEvents/eventsHome.aspx

Cumberland Lodge Weekend

Cumberland Lodge is a Royal House set in the picturesque surroundings of the Great Park, Windsor. Every year LSE Law

arranges a weekend away for staff and law department students, the purpose of which is to create an informal and friendly environment where issues related to the law can be discussed.

The discussions centre on a series of lectures given by a number of speakers, from the legal profession and academia. The lectures usually cover a diverse range of topics and disciplines, ranging from such things as international human rights and environmental protection to contemporary problems in company law and criminal justice reform.

In addition to the lectures, you will have plenty of free time to get to know your fellow students, stroll the grounds or visit the local attractions. This academic year, the weekend will take place on Friday 13 January to Sunday 15 January 2017. The trip is subsidised by the Law Department. Each student who attends will be required to contribute a sum of £100.00. This price includes accommodation, food and transportation to and from Cumberland Lodge. Students from previous years found the trip stimulating and entertaining, and a worthwhile break from London.

Registration information will be sent to you via email in the Michaelmas Term.

A very limited number of bursaries are available for students who wish to attend Cumberland Lodge but are experiencing financial hardship. Please note that applicants must register and pay in advance for Cumberland Lodge. If their application is successful, a refund will be given.

For more information on Cumberland Lodge please contact Rachel Yarham email law.cumberlandlodge@lse.ac.uk

Department of Accounting Graduate Weekend

MSc Law and Accounting students are entitled to attend the Department of Accounting graduate weekend away to be held at the Cambridge City Hotel.

This academic year, the weekend will take place on Saturday 15 October and Sunday 16 October 2016. Students should register as soon as possible at the start of the Michaelmas Term. For more information, please email Dorothy Richards D.Richards@lse.ac.uk

REGULATIONS, ASSESSMENT AND GRADING

Regulations

MSc Law and Accounting programme regulations can be found at:

lse.ac.uk/resources/calendar/programmeRegulations/taughtMasters/2014_MScLawAndAccounting.htm

Formative Assessment

All courses include a formative assessment component which does not count towards your final degree results but which is compulsory.

Formative assessment components are designed to help you with your studies and provide opportunities for individual feedback from teachers in order to give you an idea of how you are progressing.

The course teachers will provide you with feedback, usually in the form of written comments and a mark. This feedback is invaluable in your preparation for the summative assessments as it should help you to improve and develop.

Summative Assessment

Each course will also have a summative assessment. Summative assessment on the MSc programme is via exam or essay (except LL440 which is assessed by both exam and essay) Please refer to the online course guides:

lse.ac.uk/resources/calendar/courseGuides/graduate.htm or the course Moodle pages (moodle.lse.ac.uk) for specific information regarding assessment criteria. Please be aware that deadlines are final and you should take note of due dates and plan your workload in advance. If you have any questions about assessments or deadlines, please contact the relevant course convener in the first instance. The department is unable to provide feedback on any summative assessment.

Assessment via Exam

The majority of courses that you will take on the MSc Law and Accounting programme are assessed via exam. Non-attendance at an examination will result in a mark of zero. A zero is considered a bad fail and may result in an overall fail for the degree lse.ac.uk/intranet/LSEServices/TQARO/Calendar/SchemeTaughtMasters.pdf.

Assessment via Essay

Some of the courses that you take from the Law and Accounting departments may be assessed via essay. For submission deadlines, word lengths and other information, please refer to the relevant course guide or Moodle page.

The core course LL440 Corporate Accountability: Topics in Legal and Accounting Regulation has an essay component (worth 40 per cent of the overall mark):

- The Word Length is 10,000. Penalties will be incurred for exceeding the word limit. Examiners will apply 1 penalty point for every 100 words over the limit, to a maximum of 9 points.
- The submission deadline is **16:00 on Tuesday 15 August 2017**.
- The Long Essay guide contains information on writing and submitting the essay and you will receive a copy of this in Michaelmas Term. An electronic version will also be available on Moodle.
- Penalties will be incurred for late submission. Examiners will apply 5 penalty points per day for essays that are submitted late.

Deadline Extensions

Extensions to the submission deadline are not the normal practice. However, in highly exceptional circumstances (usually only emergency medical cases), it may be possible to obtain short extensions. You should contact the Postgraduate Exams and Assessment Administrator by email to make this request using law.ilmexams@lse.ac.uk and provide supporting evidence. The decision to permit an extension will be made by the Sub-Board Chair of Examinations and written confirmation of permitted extensions will be sent to students and copied to the Postgraduate Programme Administrator. Applications for extensions will not be considered after the deadline for submission has passed, and unexcused late submissions will attract the normal School penalties.

Examination Dates

Examinations for most courses take place during the Summer Term (May/June) with some held in January. The examination

timetable for January exams will be available by the end of November and the Summer exams timetable will be available in week 7 of the Lent Term. Note that once the examination dates are set by the School, no changes to the schedule can be made. The exams timetable is published on the LSE Website, and you can access your personal examination timetables through [LSEforYou](https://lse.ac.uk/intranet/students/registrationTimetablesAssessment/examinationsAndResults/home.aspx). For detailed information on the examination and assessment process, see:

lse.ac.uk/intranet/students/registrationTimetablesAssessment/examinationsAndResults/home.aspx

Exceptional Circumstances

Each year some students are unexpectedly affected by illness or other circumstances that interfere with their exam preparation and performance. Should you find yourself in this situation you should contact your Academic Adviser and the Examinations Office: exams@lse.ac.uk

The options available to students who experience exceptional circumstances include: Deferral of Assessment, Submitting Mitigating Circumstances and Interruption of Studies. Details can be found at the Examination webpage and the specific links below:

lse.ac.uk/intranet/students/registrationTimetablesAssessment/examinationsAndResults/exceptionalCircumstances/exceptionalCircumstances.aspx

Deferral

lse.ac.uk/intranet/students/registrationTimetablesAssessment/examinationsAndResults/exceptionalCircumstances/Deferral/Deferral.aspx

Interruption of Studies

lse.ac.uk/intranet/students/registrationTimetablesAssessment/Registration/Changes/interruption.aspx

Exceptional Circumstances

lse.ac.uk/exceptionalcircumstances

Results

The LSE Graduate School Board of Examiners meets in November each year to ratify the exam marks and classifications for 12 month masters programmes. Provisional results will be posted on LSE for You by the end of October and finalised results and classifications will be posted on LSE for You at the end of November.

Degree Certificate

For information refer to:

lse.ac.uk/intranet/students/registrationTimetablesAssessment/certificationDocumentation/DegreeCertificate.aspx

Transcript

For information refer to:

lse.ac.uk/intranet/students/registrationTimetablesAssessment/certificationDocumentation/Transcripts/home.aspx

MSc Examination Regulations and Degree Award Schemes

The Regulations for Taught Masters Degrees (students entering in or after 2009/10) can be found below

lse.ac.uk/resources/calendar/academicRegulations/regulationsForTaughtMastersDegrees.htm

Classification Schemes

The following weblink describes the rules used to assess whether a student has obtained a Distinction, Merit or Pass in their MSc degree

lse.ac.uk/intranet/LSEServices/TQARO/Calendar/SchemeTaughtMasters.pdf

MSc Prize

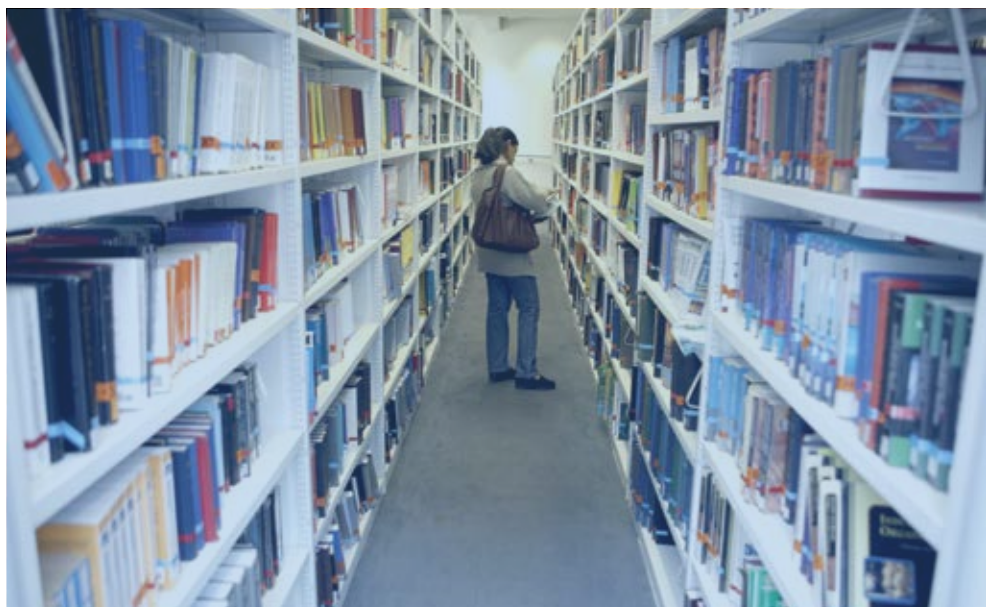
The MSc Law and Accounting awards the Herbert Smith Freehills Prize for the best performance in MSc Law and Accounting each year.

lse.ac.uk/collections/law/students/students-firstpage.htm

Graduation

The MSc Graduation ceremony is held mid-December in the year that you complete the programme. For more information see:

lse.ac.uk/intranet/students/registrationTimetablesAssessment/ceremonies/home.aspx



IT, MOODLE AND LSE FOR YOU

IT Support

Student IT Help Desk – first floor, Library

Contact the IT Help Desk (it.helpdesk@lse.ac.uk) for support for School-owned hardware and software on the LSE network, network and email account issues, and general IT queries.

IT Support for students with disabilities

The School is committed to providing facilities and support for students with disabilities, please visit: lse.ac.uk/imt/accessibility for full details. IMT also provides one-to-one support for students who wish to become familiar with assistive technologies and software. To book a session contact: Sebastiaan Eldritch-Boersen via imt.disabilities.support@lse.ac.uk.

Key information for new students

lse.ac.uk/imt/newstudent

Email

The School will use your LSE email address to communicate with you so you should check it regularly. The email program Microsoft Outlook is available on all student PCs on the LSE network. You can also access e-mail off-campus using webmail and remote desktop or on the move, using email clients for laptops and mobile phones. For instructions on how to access your email off campus, visit

lse.ac.uk/intranet/LSEServices/IMT/remote

Phishing Attacks

Always look out for scam emails which try to fool you into giving away information which can be used to hack your network account, perpetrate identity theft or compromise your financial accounts.

Don't become a victim. Scam emails are often quick and easy to identify:

- Generic greetings
- Urgent wording
- Short, vague messages
- Requests for your personal information
- Poor spelling and grammar

If it matches the above criteria, it's most likely a scam. If in doubt, don't click.

Report it to it.servicedesk@lse.ac.uk and help keep your accounts secure.

Moodle

Moodle is LSE's Virtual Learning Environment (VLE). It is a password protected web environment that contains a range of teaching resources, activities, assignments, information and discussions for your course. The content of Moodle is the responsibility of your teacher and so it will vary from course to course.

You can access Moodle from any computer connected to the internet, on and off campus. Go to moodle.lse.ac.uk and use your LSE user name and password to log in. This page also has links to help/ advice on using Moodle.

You will also find links to Moodle from a number of web pages, including the webpage for "Staff and Students". If you have any technical problems with Moodle you should contact the helpdesk at it.helpdesk@lse.ac.uk

LSE for You

LSE for You is a personalised web portal which gives you access to a range of services. For example, you can:

- view or change your personal details
- reset your Library and network passwords
- monitor and pay your tuition fees online
- check your exam results

You can also access online tutorials on how to navigate and personalise LSE for You via its login page. Use your LSE network username and password to login. Via lse.ac.uk/lseforyou

LSE Study Toolkit

LSE Study Toolkit – lse.ac.uk/studytoolkit – is designed to help you tackle LSE-style study with confidence. Four areas identified by current students as vital to success at LSE – justifying your arguments, studying independently, communicating your ideas and honing your quantitative skills – are addressed with short films and expert guidance that provide the tools necessary for effective and rewarding study.



SERVICES AND FACILITIES

Alumni Association

The LSE Lawyers' Alumni Group comprises alumni of the School who studied law at LSE or have an interest in law having studied another subject at LSE. The group provides a forum for discussion at a variety of events throughout the year, offers opportunities for professional networking and encourages active alumni support for the School. Membership of the group is free, and all alumni of the School are invited to join. If you would like to become a member, please complete our membership form or email the Alumni Relations team on alumni@lse.ac.uk.

For information about all benefits and services available to alumni, please visit LSE Alumni Online or contact the Alumni Relations team on alumni@lse.ac.uk

Writing Coach Scheme

The Law School runs a Writing Coach Scheme which is a resource designed to help students improve the quality of their written work. The programme runs by way of 15 minute slots and is available to discuss any aspects of the process of producing written work including planning, research, stylistic issues, structure and other matters. Advice is also available on working practices, revision for examinations, more efficient ways to read

complex legal materials and any other such problems. Students are invited to bring along previous formative essays if they wish (marked or unmarked) if they have specific questions or issues on the form or style of their written work. No advice on substantive matters can be given.

Students are welcome to book appointments on LSEforYou with Robert Craig (r.j.craig@lse.ac.uk). The slots are currently on Wednesdays but more capacity can be added if there is sufficient demand.

LSE Careers

LSE Careers offers a wide range of seminars, employer presentations, fairs and face-to-face career discussions to help you at every stage of your career planning process – from deciding what you want to do to preparing for interviews and settling into your first job. LSE Careers also works with your department to deliver events and services tailored to you.

For information about career planning, internships, part time vacancies and more, visit lse.ac.uk/careers

You can also browse our Graduate Destinations website (lse.ac.uk/GraduateDestinations) to find out what LSE graduates have gone on to do, organised by department or subject.

For up-to-date information about events, booking, resources, news and vacancies follow us on Facebook facebook.com/lsecareers and Twitter [@LSECareers](https://twitter.com/LSECareers)

LSE Volunteer Centre

The LSE Volunteer Centre is based within LSE Careers and is here to help you develop new skills and new friendships while making an impact through volunteering. We advertise volunteering opportunities at different charities across London and internationally, with positions ranging from one-off opportunities to part-time internships with charities. The annual Volunteering Fair takes place at the beginning of Michaelmas term and is a great opportunity to meet a wide range of charities and get a feel for the work they do. You can find out more, as well as tips and advice about volunteering, on the LSE Volunteer Centre website lse.ac.uk/volunteercentre or [@LSEVolunteering](https://twitter.com/LSEVolunteering)

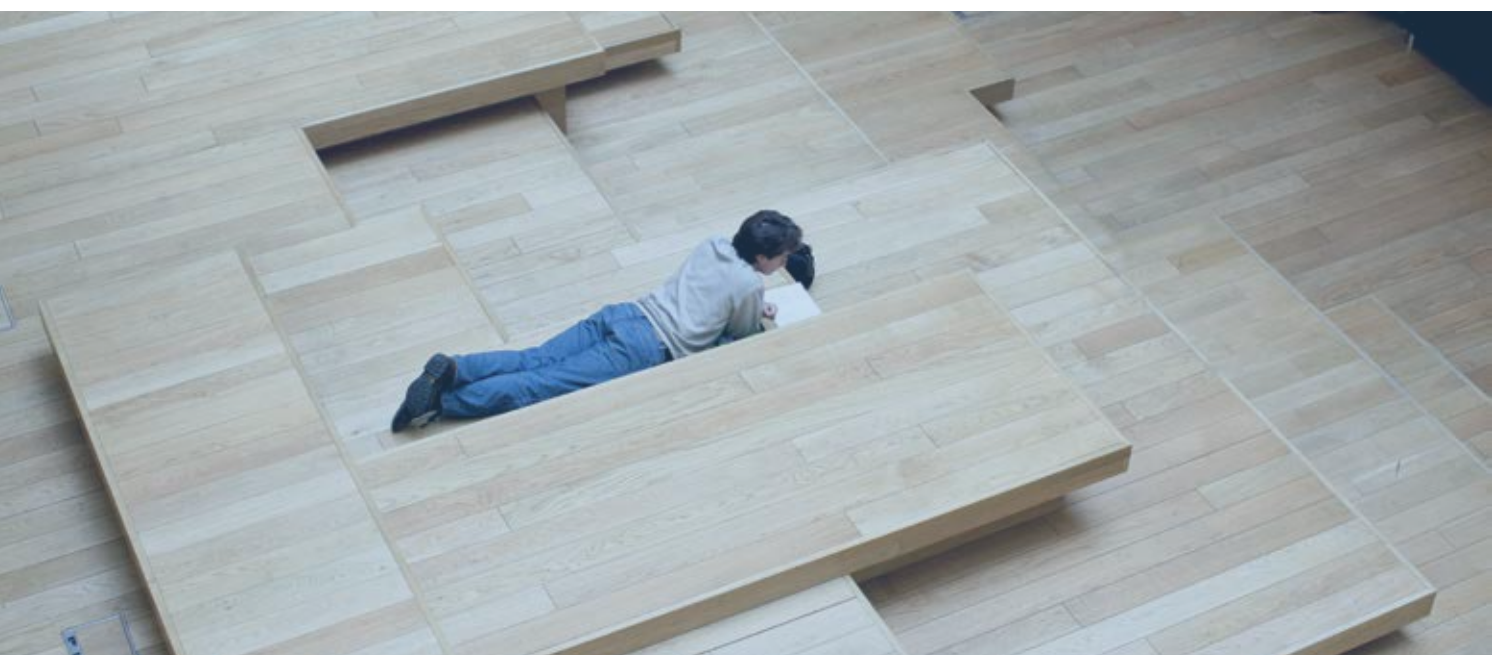
LSE Catering

Information about the wide range of restaurants and cafes available on campus.

lse.ac.uk/intranet/LSEServices/cateringServices/Home.aspx

LSE Library

lse.ac.uk/library



SOURCES OF SUPPORT FOR STUDENTS

In the first instance, your first point of contact with any concerns should be your Academic Adviser. Refer to the section on Key Programme Contacts for details of other contact points within the Programme, such as the Programme Director, in the event that your Academic Adviser is not able to assist you. The list below gives a summary of other sources of support (and the weblinks) within the School.

Academic Support Services:

lse.ac.uk/intranet/students/academicSupportServices/home.aspx

Information about [Library Subject Guides](#), [Moodle](#) and links to [Study Advisers](#).

Careers and Vacancies:

<http://lse.ac.uk/careersService>

Careers guidance, information on graduate employment, and vacancies exclusive to students and alumni, plus jobs at LSE and information on what it is like to work here.

Disability and Well-being:

lse.ac.uk/disability

The Disability and Well-being Service (DWS) runs three specialist services, all of which are free and confidential:

- The Disability Service, for students with physical/sensory impairments and those with long-term or chronic medical conditions
- The Neurodiversity Service, for students with dyslexia, dyspraxia, Asperger syndrome and other neurodiverse conditions
- The Mental Health and Well-being Service, for students with mental health concerns

The DWS can also set up Individual Student Support Agreements (ISSAs), outlining reasonable adjustments such as extended library loans, negotiated deadlines and rest breaks in exams.

Faith Centre:

lse.ac.uk/intranet/LSEServices/faithCentre

For information about religious services, events, support and the [Interfaith Forum](#).

It runs several interest and support groups, for example the Neurodiversity Interest Group and the Circles Network.

For further information please visit lse.ac.uk/disability or email disability-dyslexia@lse.ac.uk

Healthcare:

lse.ac.uk/intranet/students/supportServices/healthSafetyWellbeing/healthIssues.aspx

For information about registering with a doctor or dentist, finding an optician, and where to go for help with emergency health issues.

Health, Safety and Wellbeing:

lse.ac.uk/intranet/students/supportServices/healthSafetyWellbeing/home.aspx

For information about the [Student Counselling Service](#), the [Disability and Wellbeing Office](#), the [Students' Union Advice and Support service](#), and more.

Language Centre:

lse.ac.uk/language/EnglishProgrammes/EnglishHome.aspx

Information about the [Insessional Support Programme](#), [Learning Support Workshops](#), and more.

Lesbian, Gay, Bisexual and Transgender Students:

lse.ac.uk/intranet/students/supportServices/LGBTstudents.aspx

For information about the [Students' Union LGBT Society](#), the LSE Diversity Blog, external support services and more.

Money Matters:

lse.ac.uk/intranet/students/moneyMatters/home.aspx

For information about – [Fees Office](#), [Table of Fees](#), [Financial Support](#), [Loans](#), [Part-time Work](#), [Bank Accounts](#), [Council Tax](#), [Financial Problems](#), and more.

Student Mentoring Scheme:

lse.ac.uk/intranet/students/supportServices/schoolWideMentoringScheme.aspx

Information about the scheme for new students and those wishing to become a student mentor.

Student Services Centre:

lse.ac.uk/intranet/students/supportServices/studentServicesCentre/Home.aspx

The Student Services Centre is located on the ground floor of the Old Building. It provides access to a range of services related to admissions, registration, fees, financial support, course choice, exams and results, graduation, and more.

The Student Services Centre provides a counter service for students between 11am and 4pm every weekday.

Students With Children:

lse.ac.uk/intranet/students/supportServices/studentsWithChildren.aspx

Advice on pregnancy, finances, accommodation and impacts on studies.

Teaching and Learning Centre:

lse.ac.uk/intranet/LSEServices/TLC/Home.aspx

For information about Development and Training, online learning support from Learning World and more.

MSc Dissertation Week

The Teaching and Learning Centre organises five days of events for MSc students at the end of the Summer Term designed to help you plan, write and make the most of your Long Essay or Dissertation. See lse.ac.uk/tlc/dissertation

Visas and Immigration:

lse.ac.uk/intranet/students/ISVAT

The International Student Immigration Service (ISVAT) provides detailed immigration advice for International Students on their website which is updated whenever the immigration rules change. They can advise you by e-mail (if you complete a web query form on the ISVAT website) or at the drop-in service in the Student Services Centre reception. ISVAT run workshops to advise students applying to extend their stay in the UK; and in complex cases, they will make individual appointments."



APPENDIX 1: LAW COURSES

Calendar Course Guides can be found at lse.ac.uk/resources/calendar/courseGuides/graduate.htm

Code	Course Title	Teaching Term	Unit value
LL4AA	Global Copyright Policy: Contemporary Issues	MT	0.5
LL4AH	Corporate Governance	MT	0.5
LL4AJ	Insolvency Law: Principles, Rescue and Reconstruction Processes	MT	0.5
LL4AK	Insolvency Law: Company Liquidation and Stakeholder Interests	LT	0.5
LL4AL	International Business Transactions: Commercial Litigation	MT	0.5
LL4AM	International Business Transactions: Advanced Procedure and Tactics	LT	0.5
LL4AN	International Business Transactions: Transnational Torts	MT	0.5
LL4AP	International Business Transactions: Contracts and Property	LT	0.5
LL4AZ	International Tax Systems: Advanced Problems	LT	0.5
LL4AT	Regulation: Strategies and Enforcement	MT	0.5
LL4AU	Regulation: Legal and Political Aspects	LT	0.5
LL4AY	International Tax Systems	MT	0.5
LL4BF	Regulating for Financial Stability	LT	0.5
LL4BK	Corporate Crime	MT	0.5
LL4BL	Financial Crime	LT	0.5
LL4BQ	Trade Mark Law	MT	0.5
LL4BR	Brands and Trade Marks: Contemporary Issues	LT	0.5
LL4CD	European Company Law	LT	0.5
LL4CF	UK Corporate Law	MT	0.5
LL4CJ	Comparative Corporate Taxation	MT	0.5
LL4F2	The Law & Practice of International Finance	LT	0.5
LL4F3	Mergers, Acquisitions and Restructurings in Europe	LT	0.5
LL4F4	Takeover Regulation in the UK and the US	MT	0.5
LL4G8	Law of Corporate Finance	MT	0.5
LL4K9	European Capital Markets Law	MT	0.5
LL4N6	Principles of Copyright Law	MT	0.5
LL4S1	Cyberlaw	MT	0.5
LL4S2	E-Commerce Law	LT	0.5
LL4S5	Piracy, Content and Ownership in the Information Society	LT	0.5
LL4Z1	Business Taxation	MT	0.5
LL4Z2	Principles of Taxation	LT	0.5
LL4Z3	Consumption Taxes	MT	0.5
LL4Z4	Value Added Tax in the EU	LT	0.5
LL4Z9	Banking Law	MT	0.5

APPENDIX 2: ACCOUNTING AND FINANCE COURSES

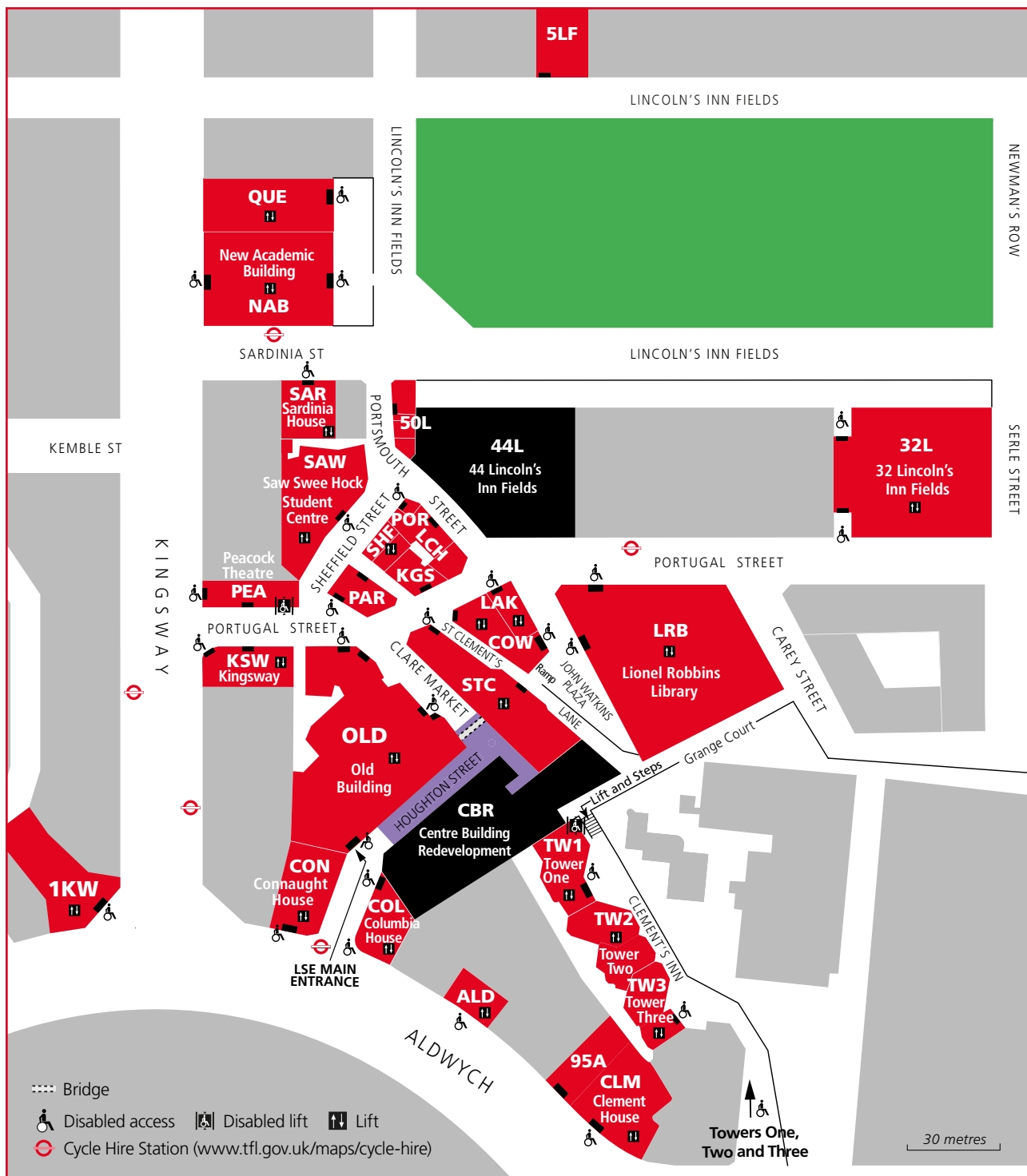
Calendar Course Guides can be found at lse.ac.uk/resources/calendar/courseGuides/graduate.htm

Code	Course Title	Teaching Term	Unit value
AC411	Accounting, Strategy and Control	MT	0.5
AC412	Accountability, Organisations and Risk Management	LT	0.5
AC415	Management Accounting for Decision Making	LT	0.5
AC444	Valuation and Security Analysis	LT	0.5
AC470	Accounting in the Global Economy	MT	0.5
FM421	Applied Corporate Finance	LT	0.5
FM430	Corporate Finance and Asset Markets	MT and LT	1
FM431M	Corporate Finance A	MT	0.5
FM431L	Corporate Finance A	LT	0.5
FM471A	Finance I	MT	0.5
FM471B	Finance I	LT	0.5
FM474	Finance II	LT	0.5



NOTES

NOTES



■ LSE buildings
 ■ No access
 ■ LSE redevelopment sites

Key to abbreviations

95A 95 Aldwych, Aldwych	LRB Lionel Robbins Building, Library and LSE Research Lab
CBR Centre Building Redevelopment (2015-2019)	NAB New Academic Building, Lincoln's Inn Fields
ALD Aldwych House, Aldwych	OLD Old Building, Houghton Street
CLM Clement House, Aldwych	PAR Parish Hall, Sheffield Street
COL Columbia House, Aldwych	PEA Peacock Theatre, Portugal Street
CON Connaught House, Aldwych	POR 1 Portsmouth Street
COW Cowdray House, Portugal Street	QUE Queens House, Lincoln's Inn Fields
KGS King's Chambers, Portugal Street	SAR Sardinia House, Dentist, Sardinia Street
1KW 1 Kingsway	SAW Saw Swee Hock Student Centre
KSW 20 Kingsway	SHF Sheffield Street
LAK Lakatos Building, Portugal Street	STC St Clement's, Clare Market
LCH Lincoln Chambers, Portsmouth Street	TW1 Tower One, Clement's Inn
5LF 5 Lincoln's Inn Fields	TW2 Tower Two, Clement's Inn
32L 32 Lincoln's Inn Fields	TW3 Tower Three, Clement's Inn
44L 44 Lincoln's Inn Fields (2017-2020)	
50L 50 Lincoln's Inn Fields	

Academic Departments

Accounting OLD 3.20	International Inequalities Institute (III) TW1 8.01
Anthropology OLD 6.04a	International Relations CLM 6th flr
Confucius Institute for Business London TW3 3.01	Language Centre KSW G.03
Economic History SAR 6th flr	Law NAB 6th flr
Economics 32L 1.01	Management NAB 3rd flr
European Institute COW 3.11	Marshall Institute 5LF
Finance OLD 3.06	Mathematics COL 4.01
Gender Institute COL 5.04g	Media and Communications TW2 6.01
Geography and Environment STC S406	Methodology COL 8.07
Government CON 3.18	Philosophy, Logic and Scientific Method LAK G.01
Institute of Global Affairs (IGA) TW3 9.01	Psychological and Behavioural Science QUE 3rd flr
Institute of Public Affairs (IPA) SAR 6.12	Social Policy OLD 2.48
International Development CON 8.16	Sociology STC 200
International History SAR 1st flr	Statistics COL 6.13

This information can be made available in other formats, on request.

Please contact: m.sahrle@lse.ac.uk

The School seeks to ensure that people are treated equitably, regardless of age, disability, race, nationality, ethnic or national origin, gender, religion, sexual orientation or personal circumstances.

Freedom of thought and expression is essential to the pursuit, advancement and dissemination of knowledge. LSE seeks to ensure that intellectual freedom and freedom of expression within the law is secured for all our members and those we invite to the School.

The London School of Economics and Political Science is a School of the University of London. It is a charity and is incorporated in England as a company limited by guarantee under the Companies Acts (Reg No 70527)