

Centre for Economic Performance 21st Birthday lecture series

Too Many People in Britain? Immigration and the Housing Problem

Professor Stephen Nickell

Warden, Nuffield College, Oxford, member, Budget Responsibility Committee, Office for Budget Responsibility

John Van Reenen

Chair, LSE



Suggested hashtag for Twitter users: #lseimmigration

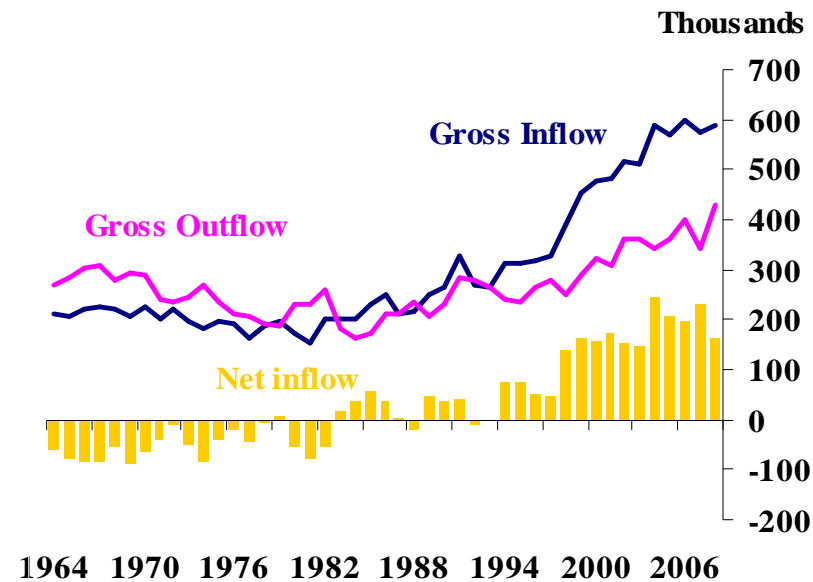


Too Many People in Britain? Immigration and the Housing Problem

**Stephen Nickell
Nuffield College, Oxford**

June, 2011

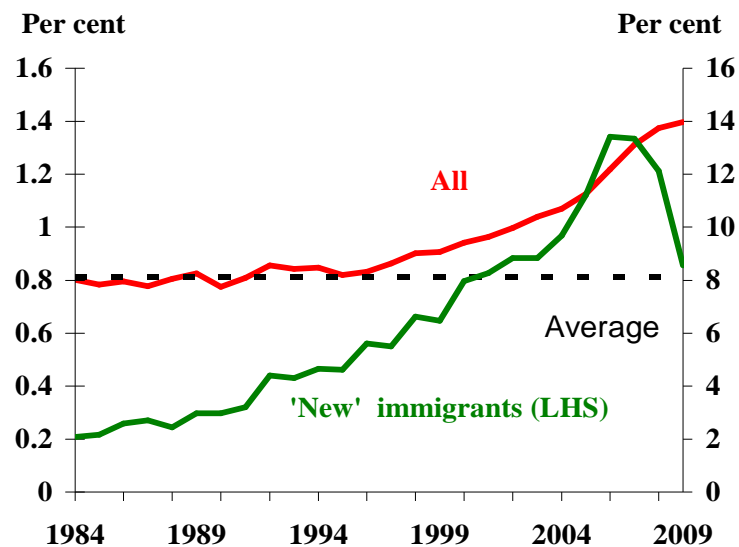
Immigration into and out of the United Kingdom



Source: Data are mainly from the International Passenger Survey (IPS). From 1991, the ONS supplement the IPS with administrative data on asylum seekers and their dependents, and estimates of the migrant flow between the United Kingdom and the Irish Republic; the ONS also make other adjustments to account for those whose intended length of stay changes (from less than a year to more than a year, and vice versa). The IPS sampling methodology was also changed in 1999.

1. The number of people (all ages) entering/leaving the United Kingdom with the intention of staying/leaving for at least 1 year.

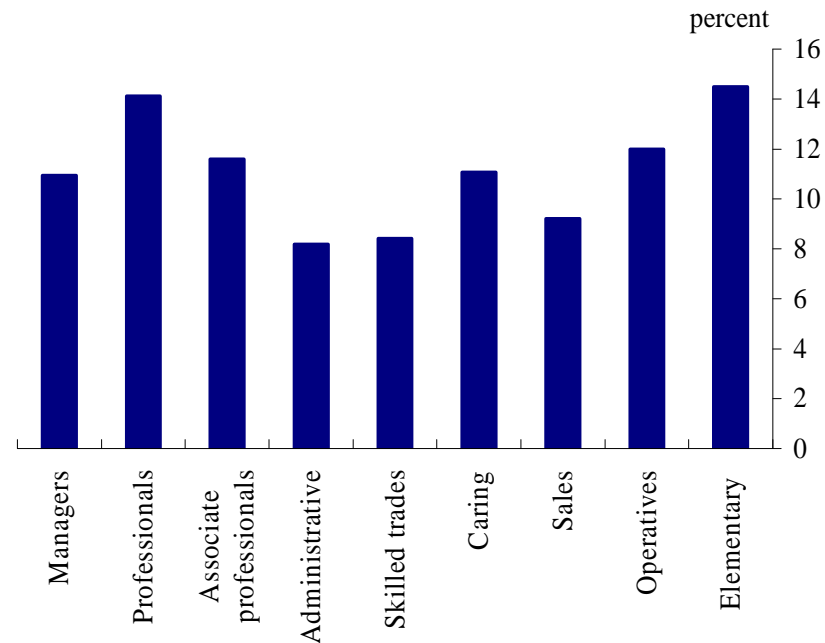
The foreign-born share of the population aged 16 to 64



Source: Labour Force Survey (LFS) and authors' calculations.

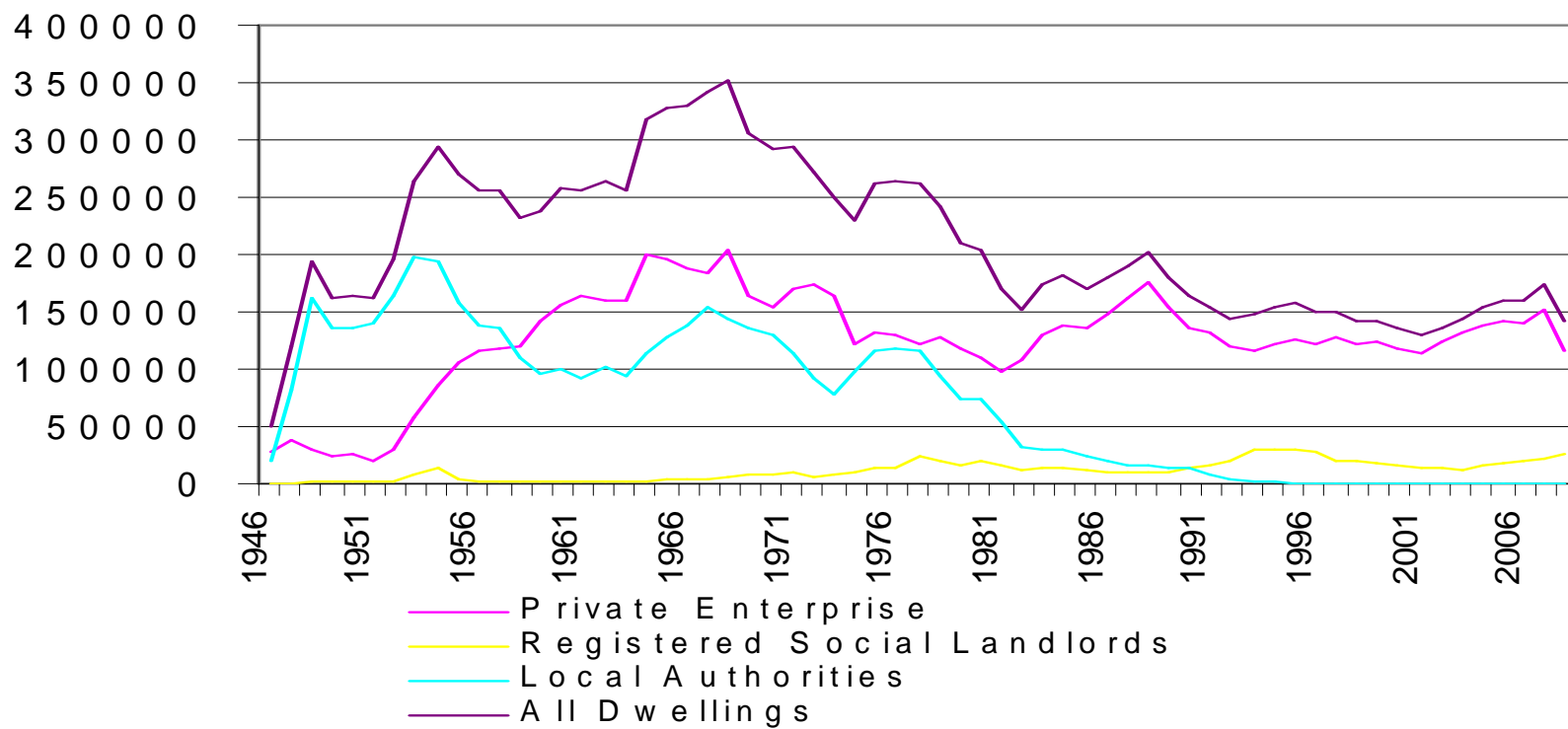
1. The number of 16–64 year olds born outside the United Kingdom as a proportion of the total population aged 16–64.
2. 'New' immigrants are those who entered the United Kingdom in the survey year or the year before the survey was carried out.
3. Dotted line is the average share of foreign-born individuals in the UK population between 1985 and 1995.
4. 2009 data capture data to 2009Q3 only.

Immigrant-native ratio by occupation: 1-digit classification (2004–2008)



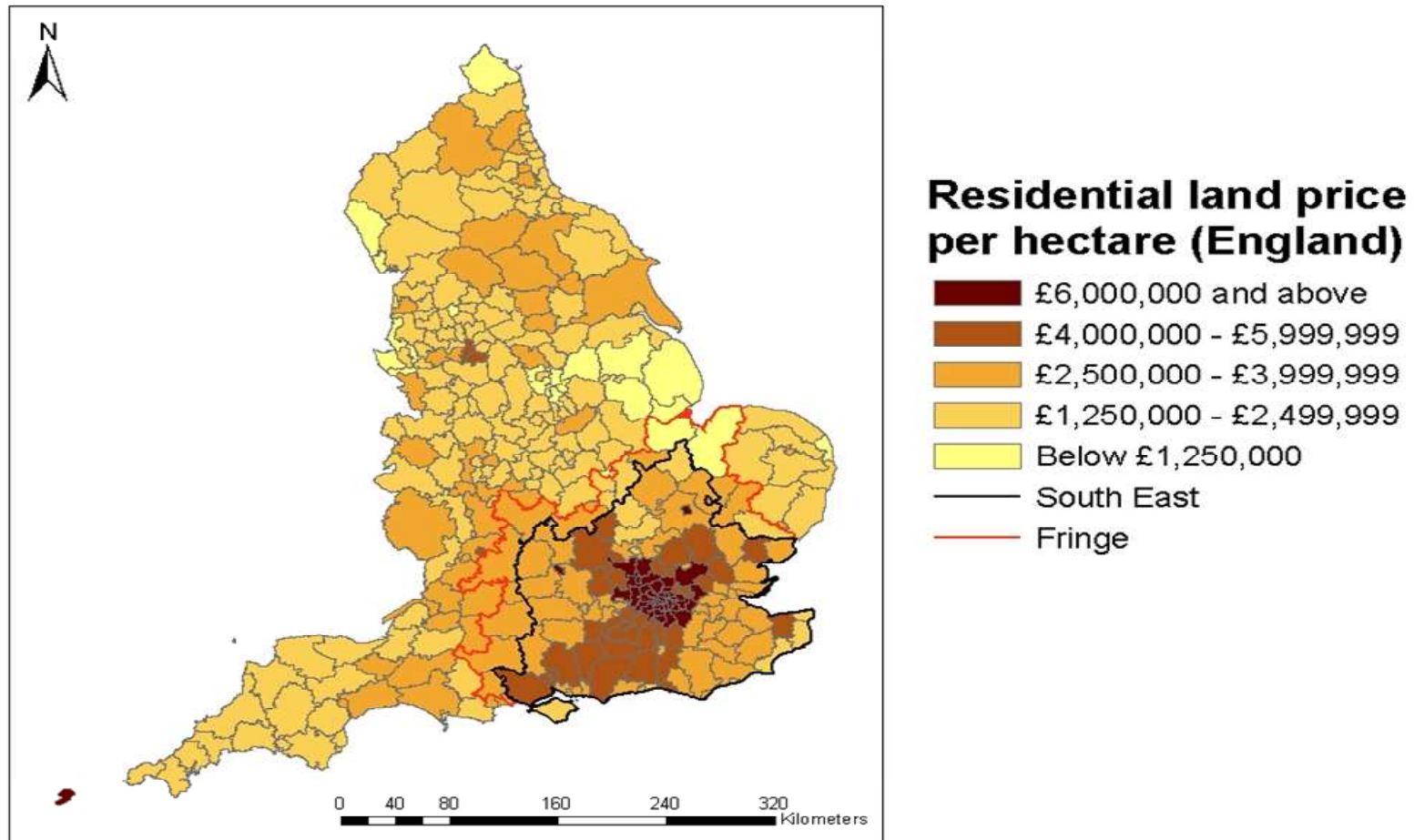
Source: Labour Force Survey (LFS) and authors' calculations.

Completions by Tenure in England



Source: CLG

Residential land price per hectare (England)



Source: Property Market Report (July 2007)

Centre for Economic Performance 21st Birthday lecture series

Too Many People in Britain? Immigration and the Housing Problem

Professor Stephen Nickell

Warden, Nuffield College, Oxford, member, Budget Responsibility Committee, Office for Budget Responsibility

John Van Reenen

Chair, LSE



Suggested hashtag for Twitter users: #lseimmigration

