



Iskandar Malaysia: A Sustainable Urban Development in the Making

By
Datuk Syed Mohamed Syed Ibrahim
President/CEO
Iskandar Investment Berhad

WHY ISKANDAR MALAYSIA?

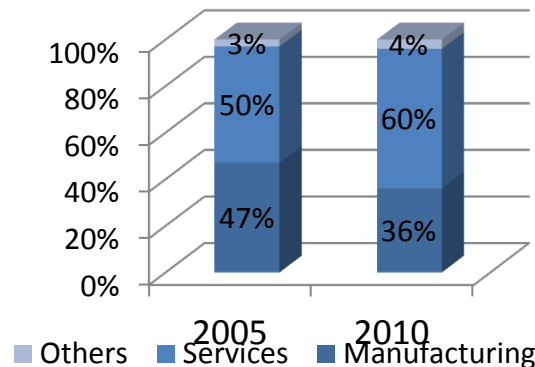
- Established in 2006, **Iskandar Malaysia** lies at the heart of South East Asia; at the southern tip of West Malaysia within minutes from Singapore
- Strategically located at the cross roads of East-West trade lanes



Projected Impact on Selected Economic Indicators in South Johor With or Without Iskandar Malaysia Intervention

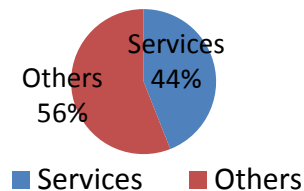
	In 2005	Without IM in 2025 "Business as usual"	With IM in 2025
Population Size in million	1.3	2.3	3.0
GDP (PPP) in USD billion	19.3	64.1	93.3
GDP per capita (PPP) in USD	14,367	26,694	31,100
Labour Force in million	0.624	1.16	1.46
Employment in million	0.61	1.0	1.43
Unemployment	3-4%	5.2%	1.8%
Employment Productivity in USD million (PPP)		25.1	30.5

GDP Contribution by Major Sectors, IM, 2005-2010

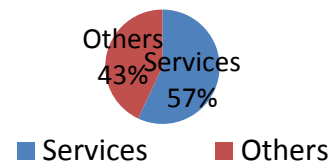


Employment by Sector, IM, 2005-2010

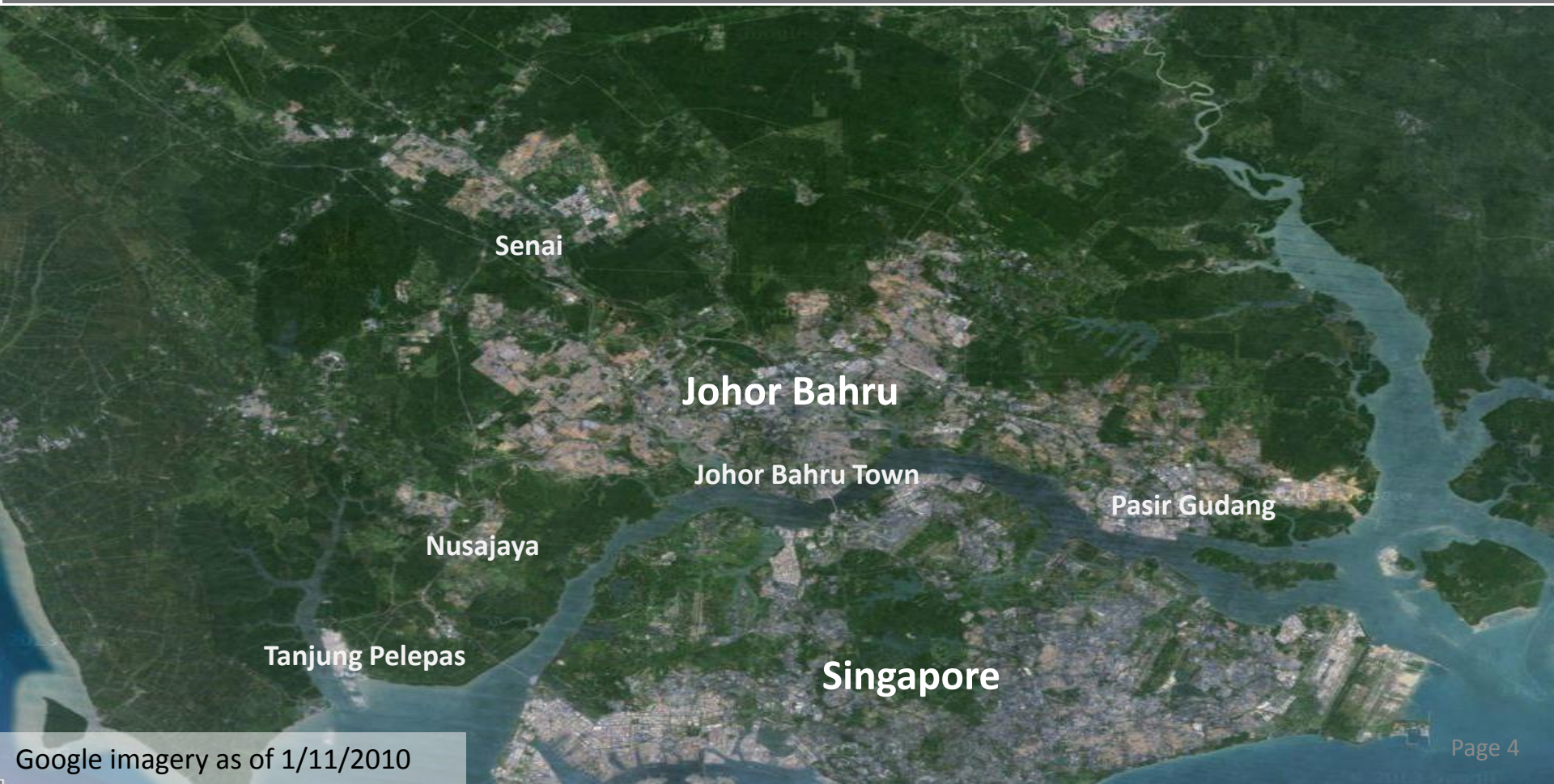
Employment for 2005



Employment for 2010



MAP OF SOUTH JOHOR



Vision

A Strong Sustainable Metropolis of
International Standing

Five Strategic Pillars



Three Foundations



Iskandar Malaysia's development is based on the 3 Foundations and guided by the Five Strategic Pillars

STRUCTURE & KEY STAKEHOLDERS IN ISKANDAR MALAYSIA

FACILITATOR

Prime Minister

Chief Minister
of Johor

Co-Chairmen

ISKANDAR
REGIONAL
DEVELOPMENT
AUTHORITY



STRATEGIC DEVELOPER



**Khazanah
Nasional
Berhad**
60%



**ISKANDAR
INVESTMENT**

**Kumpulan
Prasarana
Rakyat Johor**
20%

**Employees
Provident
Fund**
20%



THE SIZE AND FLAGSHIP ZONES OF ISKANDAR MALAYSIA

JOHOR BAHRU CITY CENTER

- JB Central Business District
- JB Conservation & Heritage Zone

NUSAJAYA

- Kota Iskandar
- Medini
- EduCity
- Puteri Harbour

WESTERN GATE DEVELOPMENT

- Port of Tanjung Pelepas
- Free Trade Zone
- Tanjung Bin Maritime Centre
- RAMSAR World Heritage Park

EASTERN GATE DEVELOPMENT

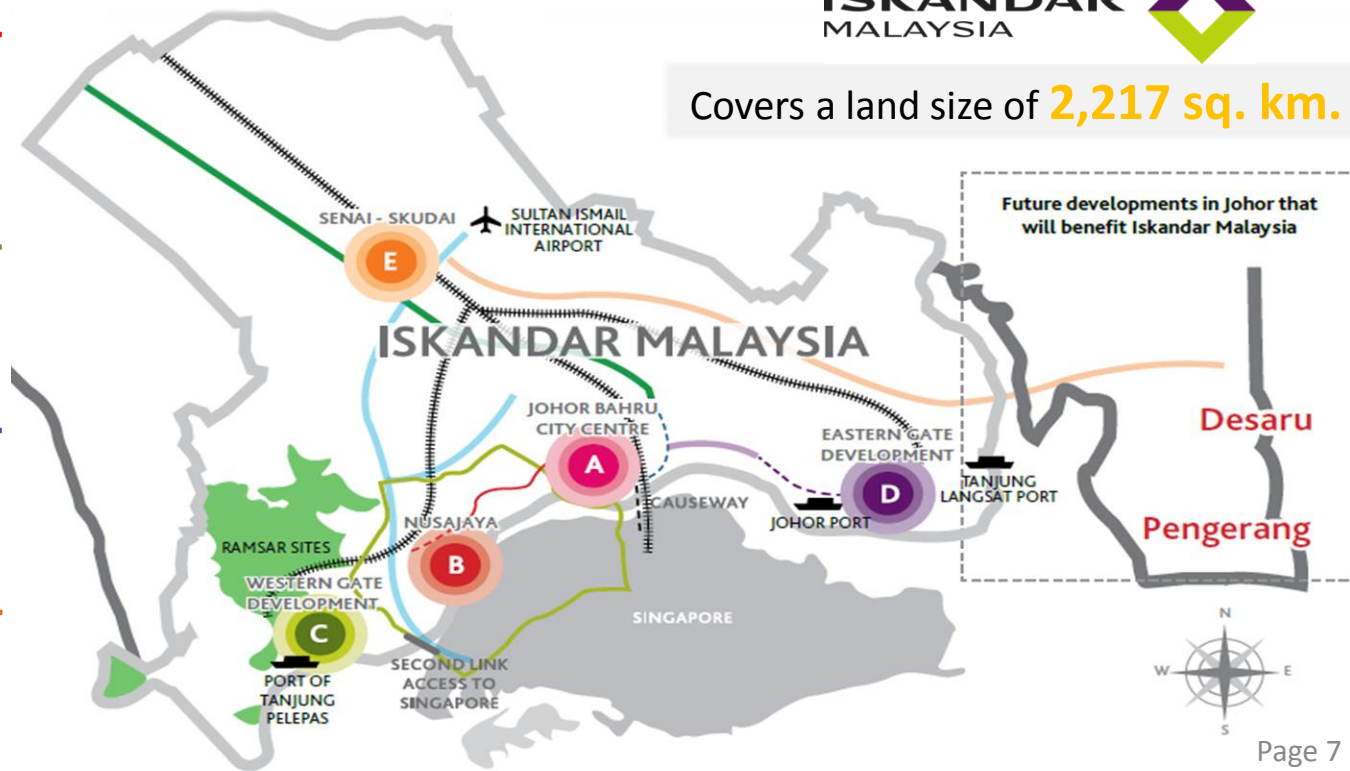
- Tanjung Langsat Industrial Park
- Johor Port

SENAI - SKUDAI

- Senai International Airport
- Senai High Tech Park
- Johor Premium Outlets



Covers a land size of **2,217 sq. km.**

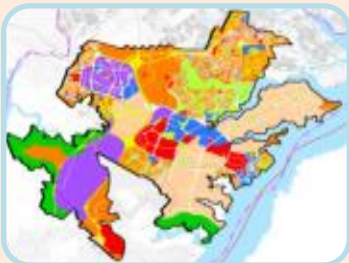


PROMOTED SECTORS OF ISKANDAR MALAYSIA

FLAGSHIP ZONE A Johor Bahru



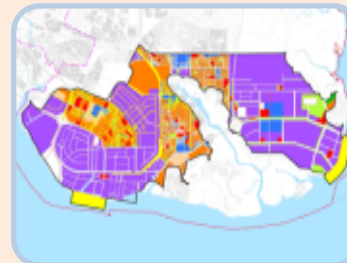
FLAGSHIP ZONE B Nusajaya



FLAGSHIP ZONE C Port of Tanjung Pelepas



FLAGSHIP ZONE D Pasir Gudang / Tanjung Langsat



FLAGSHIP ZONE E Senai – Skudai



CULTURAL & URBAN TOURISM

- Tourism (Cultural and Urban)
- Financial (retail)
- Office
- Retail and shopping
- Institutional
- Education
- Recreation
- Residential

FINANCIAL, ADMIN, EDUCATION, HEALTHCARE, ENTERTAINMENT

- Institutional
- Clean and green industry related to Biotechnology
- Education
- Healthcare
- Creative
- Leisure & Tourism
- Hospitality

LOGISTICS

- Logistics-related activities
- Regional Distribution, International Procurement
- Clean and green manufacturing (light and medium)
- Oil storage Terminals
- Tourism (Ramsar)

MANUFACTURING (PETROCHEMICAL, OLEOCHEMICAL, ELECTRONICS)

- Industry related to chemical (petrochemical and oleochemical)
- Logistics
- Warehouse and distribution
- Electrical and electronics
- Education

LOGISTICS, HIGH-TECH MANUFACTURING & R&D

- Aviation
- Warehouse and distribution facilities
- High-tech manufacturing
- Food & agro processing
- Clean and green industry related to logistics cluster
- Tourism (Luxury destination shopping)



DANGA BAY



MEDINI





Main Office : Danga Bay, Johor Bahru

Tel : +607 233 9000

Fax : +607 233 9001

Oasis Square, Ara Damansara, Kuala Lumpur

Tel : +603 7844 5100

Fax : +603 7844 5200

Join us on our journey
WWW.ISKANDARINVESTMENT.COM