

The background of the entire poster is a photograph of tall, thin reeds or willows in a body of water. The reeds are dark and vertical, with some reflections visible in the water. The sky is a pale blue.

LSE *space  
for  
thought*

LITERARY  
FESTIVAL

# Reflections

Monday 24 February –  
Saturday 1 March 2014

[lse.ac.uk/spaceforthought](http://lse.ac.uk/spaceforthought)

# Welcome

We are delighted to be hosting LSE's 6th Literary Festival in 2014, with the kind support of the LSE Institute of Public Affairs. With this year's theme, **Reflections**, we are exploring the distinctive qualities of the social sciences' and the arts' approaches to understanding both the world around us and our place within it. An important strand of this theme is reflections on the First World War centenary and the value of remembering, but we are also reflecting on the contemporary world and the new generation. As in previous years, the Festival includes talks, readings, panel discussions and film screenings, as well as creative writing workshops and children's events.

We are proud to offer a space for thought, discussion and analysis that is unique in London, encouraging interaction between authors and academics on a global stage. We hope you enjoy this year's programme. Further details on all events, as well as updates to the programme, can be found at [lse.ac.uk/spaceforthought](http://lse.ac.uk/spaceforthought) or by following [@lsepublicevents](https://twitter.com/lsepublicevents) [#LSElitfest](https://twitter.com/LSElitfest) on Twitter.

Please do check the website to see the latest information about the events you wish to attend, as details may change.

*Louise Gaskell*  
*Literary Festival Organiser*

## Media Partner

We are delighted to be working in partnership with the *Times Literary Supplement*.

## Ticket Information

All events in the Festival are free to attend and open to all. E-tickets will be available to request after 10am on Tuesday 4 February. For the majority of Festival events there will also be an allocation of seats available on the day of the event, offered on a first come first served basis. Full details can be found online at [lse.ac.uk/spaceforthought](http://lse.ac.uk/spaceforthought)

## Booksales

Independent bookseller Pages of Hackney is selling books for signing at the Literary Festival.



Look out for other events taking place at LSE, outside the Festival, which continue exploring our Festival's theme.



## Refreshments

Café 54 is open throughout the Festival, located on the ground floor of the New Academic Building. A selection of sandwiches, hot and cold wraps, soup, pasta, fresh baked pastries and cookies, coffees and cold drinks will be available.



# Events

## Monday 24 February

6-8pm, Sheikh Zayed Theatre

Conflict Research Group LSE Literary Festival film screening and discussion

### *Paths of Glory*

Speakers: **Richard Daniels**, **Michael Leader**

Chair: **Professor James Hughes**

A screening of Stanley Kubrick's 1957 anti-war film *Paths of Glory*, set during the First World War, will be followed by a panel discussion.

**Richard Daniels** is senior archivist at the University of the Arts London's Archives and Special Collections Centre, specifically responsible for the Stanley Kubrick Archive. **Michael Leader** is site editor of Film4.com. **James Hughes** is director of the Conflict Research Group at LSE.



Image © MGM

6-7.30pm, Wolfson Theatre

Wellcome Trust LSE Literary Festival discussion

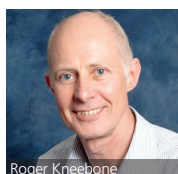
### *Tacit Knowledge in the Arts, Science and Business*

Speakers: **Professor Harry Collins**, **Professor Roger Kneebone**, **Professor Fiona Sampson**

Chair: **Richard Bronk**

The modern paradigm of knowledge is explicit knowledge *that* something is the case. But much knowledge is practical knowledge of *how* to do things – how to ride a bicycle, play a violin, write poetry or remove an appendix – and is often difficult to codify. This panel discussion will explore the nature of such tacit knowledge in art, science and the economy and how it is acquired.

**Harry Collins** is Distinguished Research Professor of Sociology and director of the Centre for the Study of Knowledge, Expertise and Science at Cardiff University. **Roger Kneebone** trained as a trauma surgeon and is now a professor in the department of surgery and medicine at Imperial College London and Engagement Fellow of the Wellcome Trust. **Fiona Sampson** trained as a concert violinist and is now an acclaimed poet and professor in the Department of English and Creative Writing, University of Roehampton. **Richard Bronk** is a visiting fellow at LSE and author of *The Romantic Economist*.



Roger Kneebone



Harry Collins

wellcome trust

Monday 24 February

8.15-9pm, Thai Theatre

LSE Literary Festival event

## Poetry Reading

Speaker: **Professor Fiona Sampson**

**Fiona Sampson** has published more than 25 books of poetry, criticism and philosophy of language, and received many awards in this country and abroad. Published in more than thirty languages, she is the editor of *Poem* and professor of poetry at the University of Roehampton. She will be reading from her own poetry.



Fiona Sampson

## Events

### Tuesday 25 February

1.15-2.45pm, Sheikh Zayed Theatre

LSE Literary Festival discussion

## Self-Help: myth or reality?

Speakers: **Julian Baggini**, **Professor Paul Dolan**,  
**Professor Barbara J Sahakian**

Is the idea of being able to improve yourself just a myth or can we really change ourselves for the better? This panel will discuss how behavioural science, neurological science and the arts can change your life.



Paul Dolan

**Julian Baggini** is the author of several books including *Welcome to Everytown: A Journey into the English Mind*, *The Ego Trick* and *The Virtues of the Table*. He is founding editor of *The Philosophers' Magazine*.

**Paul Dolan** is professor of behavioural science in the Department of Social Policy at LSE and an internationally renowned expert on happiness, behaviour and public policy. **Barbara Sahakian** is professor of clinical neuropsychology at the University of Cambridge Department of Psychiatry and MRC/Wellcome Trust Behavioural and Clinical Neuroscience Institute. She is co-author of *Bad Moves. How decision making goes wrong and the ethics of smart drugs*.

## Twitter

Follow @lsepublicevents for the most up to date information. Join the conversation #LSElitfest  
[twitter.com/lsepublicevents](https://twitter.com/lsepublicevents)



6.30-8pm, Wolfson Theatre

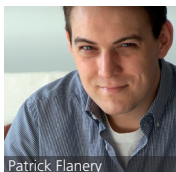
LSE Literary Festival discussion

## *Where's the Wrath Now?*

Speakers: **Stephen Fender**, **Patrick Flanery**,  
**Maggie Gee**, **Professor John Sutherland**  
Chair: **Michael Caines**

This panel will celebrate the 75th anniversary of John Steinbeck's Great Depression novel *The Grapes of Wrath* discussing its legacy and asking, given the contemporary social and political climate, where's the wrath now?

**Stephen Fender** is honorary professor of English at University College London and was professor and chair of American studies at the University of Sussex from 1985 to 2001. His most recent book is *Nature Class and New Deal Literature*. **Patrick Flanery's** first novel, *Absolution*, was published to critical acclaim in 2012 and his second, *Fallen Land*, in 2013. **Maggie Gee** has written twelve novels, a memoir and a collection of short stories. She is vice-president of the Royal Society of Literature. Her latest novel is *Virginia Woolf in Manhattan*. **John Sutherland** is Emeritus Lord Northcliffe Professor at UCL. **Michael Caines** is an editor at the *Times Literary Supplement*.



Patrick Flanery



Maggie Gee

photo © Nicholas Rankin

6.30-8pm, Sheikh Zayed Theatre

PSSRU LSE Literary Festival discussion

## *“Who is it who can tell me who I am?” Understanding Dementia through Art and Literature*

Speakers: **Melvyn Bragg**, **Dr Andrea Capstick**, **Professor Justine Schneider**  
Chair: **Professor Martin Knapp**

This panel will explore ways of understanding dementia and dementia care through art and literature, including theatre, participatory videos and the novel.

**Melvyn Bragg** is an award-winning author and broadcaster. His latest novel is *Grace and Mary*. **Andrea Capstick** is lecturer in dementia studies at the University of Bradford. **Justine Schneider** is professor of mental health and social care at the University of Nottingham. **Martin Knapp** is professor of social policy at LSE and director of the Personal Social Services Research Unit (PSSRU).



Melvyn Bragg



Justine Schneider

### Info



Receive updates on the Literary Festival programme by signing up to the Space for Thought newsletter at [lse.ac.uk/spaceforthought](https://lse.ac.uk/spaceforthought)

*Tuesday 25 February*

# Events

# Wednesday

## Wednesday 26 February

1.15-2.45pm, Sheikh Zayed Theatre

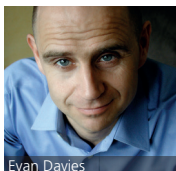
LSE Spectrum Literary Festival discussion

### *It's OK to be Gay*

Speakers: **Alice Arnold, Evan Davis, Stella Duffy, Claire Harvey**  
Chair: **Shelley Silas**

For many lesbian, gay and bisexual people, coming out to family and friends can be a frightening moment in their lives. Our panel of well-known figures will add their own coming out stories to a collective narrative which hopes to make the coming out experience a positive one for future generations. These stories and others are featured in Alison Stokes' edited collection *It's OK to be Gay*.

**Alice Arnold** was an announcer and newsreader for BBC Radio 4 and is a campaigner for equality. **Evan Davis** is a presenter of the BBC Radio 4 programmes *Today* and *The Bottom Line*, and of the BBC2 business reality show, *Dragons Den*. **Stella Duffy** has written thirteen novels, fifty short stories, and ten plays. She is also a theatre director and is currently heading the Fun Palaces project. **Claire Harvey** is assistant director of the Youth Sport Trust and captained the London2012 GB women's sitting volleyball team. **Shelley Silas** writes for radio, theatre and TV.



Evan Davis



Stella Duffy

4.30-6pm, Wolfson Theatre

LSE Language Centre Literary Festival discussion

### *War and Memory*

Speakers: **Richard Ormond, Dan Todman, Rachel Wagstaff**

This panel will discuss the differing imperatives of the historian and the creative artist in the depiction of the First World War.

**Richard Ormond** is an art historian and former director of the National Maritime Museum.

**Dan Todman** is a leading First World War historian from Queen Mary, University of London and author of *The Great War: Myth and Memory*. **Rachel Wagstaff** is author of the play *The Soldier*, and adapter of *Birdsong* for the West End stage.



Dan Todman



Rachel Wagstaff

6-7.30pm, NAB 1.04

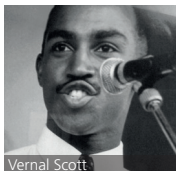
LSE Equality and Diversity Literary Festival lecture, hosted by  
LSE Staff Networks Embrace (BME) and Spectrum (LGBT)

## *Reflections on the Impact of HIV and AIDS*

Speaker: **Vernal Scott**

Chair: **Carolyn Solomon-Pryce**

Vernal Scott, author of the new autobiography, *God's Other Children – A London Memoir*, will look back at the impact of HIV and AIDS during the height of the challenge in the 80s and 90s.



Vernal Scott

**Vernal Scott** is an out Christian gay dad, diversity and human rights consultant and HIV/AIDS activist with over 25 years of experience working on the full range of equality and diversity characteristics. **Carolyn Solomon-Pryce** is equality and diversity manager at LSE.

6.30-8pm, Wolfson Theatre

Imperial College LSE Literary Festival discussion

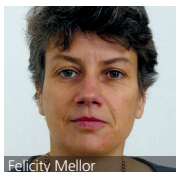
## *Metaphors and Science*

Imperial College  
London

Speakers: **Richard Bronk, Professor Roger Kneebone, Dr Felicity Mellor**

Chair: **Dr Daniel Glaser**

This discussion will examine the role of metaphors in scientific thinking and in the presentation of science. It will ask whether the use of metaphors leads to unnecessary distortions in analysis or is rather an essential part of scientific thinking.



Felicity Mellor

**Richard Bronk** is visiting fellow at the European Institute, LSE. **Roger Kneebone** is a professor in the department of surgery and medicine at Imperial College London and Engagement Fellow of the Wellcome Trust. **Felicity Mellor** is senior lecturer in the Science Communication Unit at Imperial College London. **Daniel Glaser** is director of the Science Gallery at Kings College London.

**Wednesday 19 February, 6.30-8.30pm,  
Shaw Library, Old Building**

## *Commonsense and Soldiers' Tales*

With the outbreak of the First World War, George Bernard Shaw suddenly found his reputation torpedoed when he published his anti-war pamphlet 'Commonsense About the War.' Shaw came to welcome one of the war's consequences – the overthrow of Tsar Nicholas II. The same events were to send the Russian composer Igor Stravinsky into Western exile for the rest of his life. *The Soldier's Tale* of 1918 may be read as a comment on the displacement of soldiers across Europe at the War's end.

LSE students present an evening of Shaw and Karim Said, a Barenboim protégé, appears as conductor in a programme of words and music related to the First World War.

*This event is free to attend with no ticket required. Entry on a first come, first served basis. For more information please contact [O.Sobolev@lse.ac.uk](mailto:O.Sobolev@lse.ac.uk)*



Wednesday 26 February

Wednesday 26 February

7-8.30pm, Sheikh Zayed Theatre

LSE Literary Festival discussion

## Why Remember? Reflections on the First World War Centenary

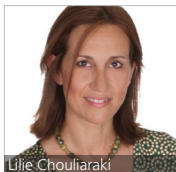
Speakers: **Professor Lilie Chouliaraki**,  
**Professor Michael Cox**, **Dr John Hutchinson**,  
**Professor Margaret Macmillan**

Chair: **Professor David Stevenson**

This multi-disciplinary panel discussion will reflect on the consequences of the First World War and the value of remembrance.

**Lilie Chouliaraki** is professor of media and communications at LSE. **Michael Cox** is founding co-director of LSE IDEAS and professor of international relations at LSE. **John Hutchinson** is reader in nationalism in the Department of Government at LSE. **Margaret Macmillan** is warden of St Antony's College, Oxford and author of *The War That Ended Peace*.

**David Stevenson** is professor of international history at LSE.



Lilie Chouliaraki



Margaret Macmillan

photo © Rob Judges



Library  
Services



## WW1 @ LSE: a common cause

LSE Library's latest digital exhibition – WW1 @ LSE: a common cause – commemorates the centenary of the First World War. The exhibition features a selection of materials held by the Library, including pamphlets, military service records of LSE students, government documents and a range of other items. Each material includes a description of its significance and relevance in the study of the conflict.

The online exhibition of the First World War is the first stage of the Library's plans to commemorate the centenary of the war, further details will be available on the website throughout 2014: [lse.ac.uk/Library](http://lse.ac.uk/Library)



Images from the first world war selected from LSE Library exhibition  
"WW1 @ LSE: a common cause"

[digital.library.lse.ac.uk/exhibitions/world-war-one-a-common-cause](http://digital.library.lse.ac.uk/exhibitions/world-war-one-a-common-cause)

# Events

# Thursday

## Thursday 27 February

---

12.30-2pm, Wolfson Theatre

LSE Review of Books Literary Festival discussion

### *Sex and Psychopaths: celebrating 100 years of Freud's On Narcissism*

Speakers: **David Bell**, **Professor Marianna Fotaki**,  
**Dr Miranda Horvath**, **David Morgan**

Chair: **Elizabeth Cotton**

This session will look at how we can understand the apparent growth in narcissism and withdrawals from intimacy in a digital age.

**David Bell** is a practicing adult psychiatrist and psychoanalyst, and a fellow of the Institute of Psychoanalysis. **Marianna Fotaki** is professor of business ethics at Warwick Business School and holds a visiting professorship in Manchester Business School. **Miranda Horvath** is reader in forensic psychology and deputy director of forensic psychological services at Middlesex University. **David Morgan** is a fellow of the British Psychoanalytical Society and has been consultant psychotherapist at the Portman Clinic for 20 years. **Elizabeth Cotton** blogs as *Surviving Work* and is an academic at Middlesex University.

6.30-8pm, Wolfson Theatre

Department of Geography and the Environment  
Literary Festival discussion

### *Gang Culture: on screen and in print*

Speakers: **Andrew Davies**, **Penny Woolcock**

Chair: **Dr Gareth Jones**

The panel will explore why gangs are a favoured subject of film and print, how they are portrayed, and how far these representations can be considered accurate or "realistic". It will also consider how these presentations in turn affect public perceptions of young peoples' lives.

**Andrew Davies** teaches modern social history at the University of Liverpool. His books include *The Gangs of Manchester* (2008) and *City of Gangs: Glasgow and the Rise of the British Gangster* (2013). **Penny Woolcock** is a writer and director making documentaries, television fiction, feature films and opera. Her fiction feature film *1 Day* (2009) about a day in the life of a gang banging street hustler led to *One Mile Away* (2013) documenting a peace process between the two notorious gangs in inner city Birmingham. **Gareth Jones** is a reader in urban geography at LSE.



Penny Woolcock



Andrew Davies

Thursday 27 February



# **The Royal Society of Literature**

**Spring/Summer 2014  
includes:**

**Margaret Atwood  
Eleanor Catton  
Richard Eyre  
Sebastian Faulks  
Maggie Gee  
Salena Godden  
Alan Hollinghurst  
Alan Johnson  
Stephen Kelman  
Hermione Lee  
Robert Macfarlane  
Don Paterson  
Jo Shapcott**

**Membership of the RSL is open  
to all. Email [joe@rslit.org](mailto:joe@rslit.org) for  
full details.**

**[www.rslit.org](http://www.rslit.org) / 020 7845 4676**

6.30-8pm, Thai Theatre

Department of Social Psychology Literary Festival discussion

## *More Tales from the Two James(es)*

Speakers: **Dr Alex Gillespie**,

**Professor Philip Horne**

Chair: **Professor Sandra Jovchelovitch**

Following on from last years' dialogue, this event will draw on readings from the work of William and Henry James to explore the links between psychology and fiction.



Dr Alex Gillespie

**Alex Gillespie** is a lecturer in social psychology at LSE and co-editor of the *Journal for the Theory of Social Behaviour*. **Phillip Horne** is professor of English at UCL and series editor of the Penguin Classics Henry James. **Sandra Jovchlovitch** is professor in the Department of Social Psychology at LSE.

7-8.30pm, Sheikh Zayed Theatre

BBC World Service LSE Literary Festival event

## *The Forum: reflections on love, laughter and friendship*

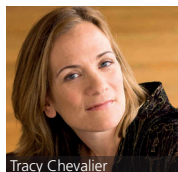


Speakers: **Tracy Chevalier**, **Daniyal Mueenuddin**, **Professor Sophie Scott**

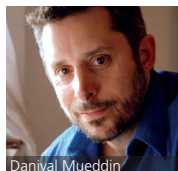
Chair: **Bridget Kendall**

BBC World Service's flagship ideas programme The Forum returns to the LSE Literary Festival to record a special show exploring the value of friendship, and the science and art of laughter with a panel of expert guests.

**Tracy Chevalier** is a best-selling novelist, whose books include the award-winning *Girl with a Pearl Earring* and most recently *The Last Runaway*. **Daniyal Mueenuddin** is an award-winning Pakistani short story writer who divides his time between Oxford and his farm in Pakistan's southern Punjab. **Sophie Scott** is a neuro-scientist and stand-up comedian. She is Wellcome Trust Senior Fellow at UCL. **Bridget Kendall** is presenter of *The Forum*.



Tracy Chevalier



Daniyal Mueenuddin

## *LSE Research Festival – Short Films*



Throughout the week, the LSE Research Festival will be screening short films submitted by student and staff researchers who were asked to convey their research through visual media. These films form a series providing an insight into the ways in which the moving image may be used as a tool to present research.

Screenings will last approximately three to five minutes, and will take place prior to Literary Festival events.

For more information on LSE Research Festival 2014 see [lse.ac.uk/lseresearchfestival](http://lse.ac.uk/lseresearchfestival) or follow us on Twitter @LSEResearchFest

Thursday 27 February

# Events

## Friday 28 February

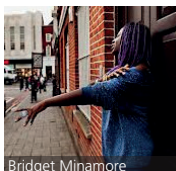
4.30-6pm, Wolfson Theatre

LSESU Literature Society Literary Festival event

### *The Power of Poetry*

Speakers: **Bridget Minamore,**  
**Chimene Suleyman**

Join LSE Students' Union and LSESU Literature Society in hosting two members of London's leading spoken word poetry collective Point Blank Poets. Bridget and Chimene will be performing their work and exploring the power of poetry in our complex political and social environment.



Bridget Minamore

**Bridget Minamore** has been reading and performing her own spoken word poetry since she came third in the Roundhouse's annual Summer Slam in 2009. She has since won various slam titles around London including Farrago and Hammer & Tongue, and has been published in anthologies such as *Burning Eye Books' Rhyming Thunder* and *Tongue Fu's Liminal Animals*. **Chimene Suleyman** is a writer and performer from North London. She was commissioned to write for and curate a text installation for the Royal Opera House, and represented the UK at the International Biennale, Rome 2011. She is the creator of spoken word night, "Kid, I wrote back".

6-9pm (including interval), Sheikh Zayed Theatre

Department of Law, Grantham Research Institute and IPA  
LSE Literary Festival event, supported by Matrix Chambers

### *Baby Boomers on Trial*

**matrix**  
chambers

Expert witnesses including: **Professor Oriana Bandiera,**  
**Shiv Malik, Bob Ward**

Following the success of last year's innovative legal proceedings, the Department of Law, in association with the IPA, is putting the baby boomer generation on trial, for breach of trust to the future. Is today's world pock-marked by excesses of the baby boomers or in far better shape than that they inherited? The prosecution and defence counsel, with a team of expert witnesses, will try to persuade you, and a jury, they are right.



Oriana Bandiera



Shiv Malik



Bob Ward

6.30-8pm, Wolfson Theatre

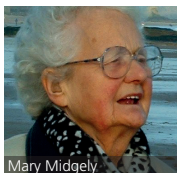
Forum for European Philosophy LSE Literary  
Festival discussion

## *Understanding the Self*

Speakers: **Mary Midgley**, **Jonathan Rée**,  
**Professor Raymond Tallis**  
Chair: **Dr Danielle Sands**

What is the self? Should we turn to philosophy, psychology or science in order to better understand it? Does the self even exist? In this panel, three thinkers respond to scientific claims that the self is an illusion, exposing the philosophical problems which such claims conceal.

**Mary Midgley** is one of the most respected moral philosophers of her generation and the author of many books including *The Solitary Self* and *Are You an Illusion?* **Jonathan Rée** is a writer, philosopher and historian. **Raymond Tallis** retired from medicine in 2006 to become a full-time writer and has published fiction, poetry, cultural criticism and philosophical anthropology, including *Reflections of a Metaphysical Flâneur*. **Danielle Sands** is a fellow at the Forum for European Philosophy.



Mary Midgley



Raymond Tallis

photo © Martin Midgley

## *Events*

### *Saturday 1 March*

---

11am – 12.30pm, Sheikh Zayed Theatre

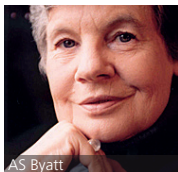
CPNSS LSE Literary Festival discussion

## *Short Stories, Deep Reflections*

Speakers: **AS Byatt**, **Professor Mary Evans**,  
**Alex Preston**  
Chair: **Cathy Galvin**

Does this year's awarding of the Nobel prize for literature to a short-story writer mark a revival of the short story's reputation, long undervalued in this country? This panel will celebrate the unique qualities of the short story form and ask why historically it has been seen as a predominantly female genre.

**AS Byatt** is renowned internationally for her novels and short stories. She is editor of *The Oxford Book of English Short Stories*. **Mary Evans** is a Centennial Professor at LSE and a sociologist. **Alex Preston**'s first novel, *This Bleeding City*, was an international bestseller and won the Spear's and Edinburgh first book awards. **Cathy Galvin** is founder and editor of The Word Factory and founder of *The Sunday Times* EFG Private Bank Short Story Award.



AS Byatt

photo © Michael Trevillion

*Saturday 1 March*

11am – 12.30pm, Wolfson Theatre

Forum for European Philosophy LSE Literary  
Festival discussion

## *Understanding the World: religious and secular perspectives*

Speakers: **Dr Arthur Bradley, Kenan Malik**

Chair: **Dr Danielle Sands**

Sensationalist accounts of the relationship between religion and secularism tend to depict the two as locked in combat, profoundly incompatible in their world views. This discussion will aim to provide both a more nuanced account of the relationship between religion and secularism, and a clearer sense of how religious and secular approaches inflect our experience and understanding of the world.



Kenan Malik

**Arthur Bradley** is a reader in comparative literature in the Department of English & Creative Writing at Lancaster University. **Kenan Malik** is a writer, lecturer and broadcaster. His latest book, to be published in April 2014, is *The Quest for a Moral Compass: A Global History of Ethics*.

**Danielle Sands** is a fellow at the Forum for European Philosophy.

1-2.30pm, Sheikh Zayed Theatre

LSE Review of Books Literary Festival discussion

## *Don't Judge a Book by its Cover: reflecting content through design*

Speakers: **Polly Courtney, Isabelle de Cat, Jonathan Gibbs**

Fiction publishing has long held that an eye catching cover is key to successful sales. But academic publishing struggles to reflect complex contents through one stand-out image on a book cover. This panel asks how crucial is how a book cover looks? And what can serious fiction and non-fiction publishing learn from its more populist cousins?



Polly Courtney

photo © Hannah Palmer

**Polly Courtney** is the author of six published novels including *It's a Man's World*, and famously walked out on her publisher, HarperCollins, for the "girly" titles and covers assigned to her books.

**Isabelle de Cat** is art editor for Penguin Press. **Jonathan Gibbs** is an author and books journalist. He writes a weekly blog on book design for *The Independent*.

## *LSE Review of Books Blog*

The LSE Review of Books publishes daily reviews of academic books across all the social science disciplines. We also produce podcasts where you can hear academics discussing the ideas behind their latest books. We will be producing a special podcast in the run up to the festival asking academics about the art and literature that inspires them.

Visit us at [blogs.lse.ac.uk/lsereviewofbooks](http://blogs.lse.ac.uk/lsereviewofbooks)



Saturday 1 March

1-2.30pm, Wolfson Theatre

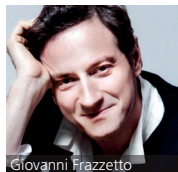
CPNSS LSE Literary Festival lecture

## *How We Feel: what neuroscience can and can't tell us about our emotions*

Speaker: **Giovanni Frazzetto**

Chair: **Stephan Guettinger**

We live at a time when neuroscience is unlocking the secrets of our emotions. But can the neural script of the brain indeed tell us how we feel? Giovanni Frazzetto takes us on a journey through our everyday lives and most common emotions. He mixes his scientific knowledge with art, literature, philosophy and personal experience to offer a set of stories that contend rationality and sentiment, science and poetry.



Giovanni Frazzetto

**Giovanni Frazzetto** was one of the founders of the European Neuroscience and Society Network and the creator of the transdisciplinary Neuroschools. Giovanni has also written short stories and plays and curated science-inspired art exhibitions. He now works at the Institute for Advanced Study and is author of *How We Feel*.

**Stephan Guettinger** is a visiting research fellow at the CPNSS.

3-4.30pm, Sheikh Zayed Theatre

LSE Literary Festival lecture

## *Alphabetical*

Speaker: **Michael Rosen**

Chair: **Professor Jennifer Richards**

How on Earth did we fix upon our letters, what do they really mean, and how did we come to write them down in the first place? From alphabets to zipcodes, Michael Rosen will tell the surprising story of our 26 letters.



Michael Rosen

photo © Laurence Cendrowicz

**Michael Rosen** is former Children's Laureate, a million-selling author and presenter of BBC Radio 4's *Word of Mouth*. **Jennifer Richards** is professor of early modern literature and culture in the School of English at Newcastle University.

**Saturday 1 March, throughout the day in the Atrium area**

## *Self-Portraits*

Continuing with the Festival's theme of "Reflections", LSE Embrace and Spectrum will be inviting guests to write or draw "reflections of self" as they see themselves in relation to the "big wide world" throughout the Saturday and creating a collage of these "self-portraits".



*Saturday 1 March*

3-4.30pm, Wolfson Theatre

Breese Little LSE Literary Festival discussion

## *Beyond Criticism*

Speaker: **Adrian Searle**

As mega-galleries rise, and auctions and art fairs parade a vulgar carnival of wealth and consumption, Searle asks who needs critics, who listens, why look, and why write and read.

**Adrian Searle** has been writing art criticism for over 35 years, and has been art critic for the *Guardian* since 1996. He has curated numerous exhibitions and has taught at many British and European art colleges. He was until recently a visiting professor at the Royal College of Art.



Adrian Searle

5-6.30pm, Sheikh Zayed Theatre

LSE Literary Festival discussion

## *Sonic Landscapes: understanding the world through sounds*

Speakers: **Professor Trevor Cox, Caroline Devine, Evan Grant**

In a world dominated by the visual, we can all benefit from opening our ears to the glorious cacophony around us, which can enrich our understanding of ourselves and our environment.

**Trevor Cox** is professor of acoustic engineering at the University of Salford and president of the Institute of Acoustics. He is author of *Sonic Wonderland*. **Caroline Devine** is an artist whose work investigates the boundary between sound and music and includes large-scale sound installations as well as works for radio and theatre.

**Evan Grant** is a technologist, artist and inventor and founder of arts and technology collective seep. He works with cymatics, the art of visualising sound.



Trevor Cox



Caroline Devine

**Saturday 1 March, throughout the day in the Atrium area**

## *LSE Improv through the Looking Glass*

LSE Improv present a collection of comic scenes, all created live before your very eyes. The plot, characters and lines are all made up by the actors, in the moment. All we need is a suggestion from the audience and off we go. Each scene will be unique, completely alive and (usually) hilarious.



LSE Improv is the LSESU Drama Society's improvisation group. All the performers are LSE students who have been training all year in the art of improv, in preparation for this opportunity to amuse and amaze you!

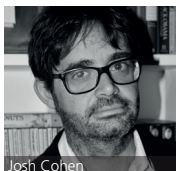
5-6.30pm, Wolfson Theatre  
LSE Literary Festival discussion

## *Private Lives: do we still value our privacy?*

Speakers: **Professor Josh Cohen,**  
**Dr Ellen Helsper, Professor Andrew Murray**

This panel will discuss where our modern understanding of privacy has come from, what our rights to privacy are in a digital age, and what effect this is having on younger generations, who seem to live their lives in the public domain.

**Josh Cohen** is professor of modern literary theory at Goldsmiths, University of London and author of *The Private Life*. **Ellen Helsper** is a lecturer in the Media and Communications Department of the LSE with a specialisation in quantitative media research. **Andrew Murray** is a professor in law at LSE.



Josh Cohen



Ellen Helsper

photo © Abigail Schama

7-8.30pm, Sheikh Zayed Theatre  
Royal Society of Literature LSE Literary Festival event

## *Voices from the Great War*

**The Royal Society  
of Literature**

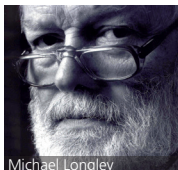
Speakers: **Tobias Hill, Michael Longley,**  
**Timberlake Wertenbaker, Louisa Young**  
Chair: **Sebastian Faulks**

One hundred years after the outbreak of the Great War, Sebastian Faulks, whose novel *Birdsong* has sold more than three million copies, introduces four writers, and the pieces of First World War literature that most move them.

**Tobias Hill** has been selected as one of the country's Next Generation poets and shortlisted for the *Sunday Times* Young Writer of the Year. *What Was Promised* is his fifth novel. **Michael Longley** is one of Northern Ireland's foremost contemporary poets, awarded the Queen's Gold Medal for Poetry in 2001. **Timberlake Wertenbaker** is a British playwright, screenplay writer and translator. Her plays include most recently *Our Ajax* which looks at the trauma of modern warfare. **Louisa Young** is author of the bestselling First World War novel *My Dear, I Wanted to Tell You*. **Sebastian Faulks** is an award-winning author and fellow of the Royal Society of Literature.



Tobias Hill



Michael Longley



Timberlake Wertenbaker

photo © John Opale Foley

*Saturday 1 March*

7-8.30pm, Wolfson Theatre

LSE Literary Festival film screening

## *One Mile Away*

*One Mile Away* follows the struggles of two warring gangs in inner city Birmingham, the Burger Bar Boys (B21) and the Johnson Crew (B6), to bring peace to their neighbourhoods. Directed by award-winning filmmaker Penny Woolcock, it won the prize for best film at Edinburgh Film Festival in 2012.



**The Festival will close with a drinks reception and a performance by The Houghton Grooves, playing a collection of famous jazz tunes with Kevin Corti (guitar), David Healey (saxophone), Ben Lange (drums), Margaux Wehr (piano) and Dilan Wijesinghe (bass).**

## *LSE Photo Prize*

LSE Photo Prize is back! Running alongside the Literary Festival, LSE staff and students are encouraged to submit their best photos on the theme of "Reflections".

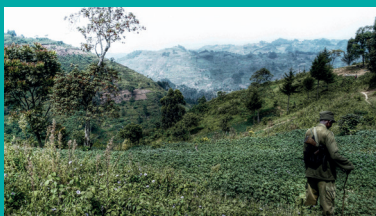


photo © Will Plowright

During the festival photos will be displayed and open to the public to see across campus and also shown online. Photos will be judged by Nick Byrne, Nigel Stead and Henry Little, and the winner will be announced at the Festival's closing reception. Everybody get snapping!

For more information see [lse.ac.uk/arts](http://lse.ac.uk/arts)

**Thursday 6 March, 7pm, Saw Swee Hock Student Centre**

## *Rhyme and Reason: reflections on climate change*



Grantham Research Institute on  
Climate Change and  
the Environment

Join award-winning poet and playwright Sabrina Mahfouz for an evening of live literature, performance and debate, as she explores climate change in the UK through storytelling and lively poetry performances, accompanied by a number of climate change experts and special guests.

This free event, which reflects upon the risks of, and responses to climate change, is hosted by the Grantham Research Institute and Clare Farewell and is aimed at the 18-30s.



To reserve your free ticket and for further event details, including your chance to perform in our climate reflections "open poetry slam" (and win prizes) on the night, please visit [lse.ac.uk/spaceforthought](http://lse.ac.uk/spaceforthought). For more information contact [gri@lse.ac.uk](mailto:gri@lse.ac.uk)

# Creative Writing Workshop

**10-11am, Alumni Theatre**

## *Me, but not Me: using your life as a springboard for fiction with Jonathan Gibbs*

Where does life end and fiction begin? It is a never-ending debate, but there has been much discussion recently of the strange, delicate and sometimes confusing relationship between the writer and their novel. This workshop will look at ways of writing "from" our lives that moves beyond the straightforwardly autobiographical. Come ready to write – about yourself, and not about yourself.



Jonathan Gibbs

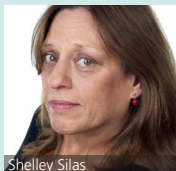
**Jonathan Gibbs** recently completed a PhD in creative and critical writing at the University of East Anglia, where he was awarded a Malcolm Bradbury Memorial bursary. His first novel, *Randall, or The Painted Grape*, about the London art world and the YBAs, will be published in spring 2014 by Galley Beggar Press

**11am – 12noon, Alumni Theatre**

## *What are you Waiting for? with Shelley Silas*

A workshop for those who have always wanted to write and are waiting for that magic moment before they begin. Macs and PCs welcome, pen and paper will do too. Be prepared to write.

**Shelley Silas** writes for radio, theatre and TV. Her radio plays include a co-adaptation of Paul Scott's *The Raj Quartet* and the award-winning *I am Emma Humphreys*. She has written several short stories and compiled and edited the anthology, *Twelve Days*. She is a Royal Literary Fund Fellow at the LSE for 2013-14.



Shelley Silas

**12-1pm, Alumni Theatre**

## *Based on a True Story with James Owen*

In this session, historian and journalist James Owen will look at ways of approaching different types of non-fiction writing. Do you want to research or write your family's story? Or your own? Are you a budding biographer or diarist? Find out how to begin and how to get the most out of the new resources available to would-be writers.



James Owen

**James Owen** is an author and journalist whose books include *A Serpent in Eden*, *Nuremberg*, *Evil on Trial*, *Danger UXB* and *Commando*. He is a Royal Literary Fund Fellow at LSE.

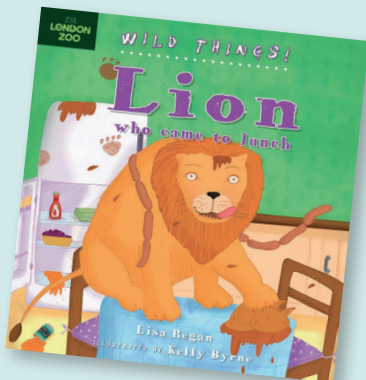
*Saturday 1 March*

# Children's Events

**2-2.45pm, New Academic Building**

## *The Lion who Came to Lunch* Storyplaytime

Join us for a fun, interactive event for under fives and their grown ups, celebrating this fabulous London Zoo/Bloomsbury book – and find out just what to expect should a lion come visiting from the zoo! Play “Zoo hide and seek”, join in our “Lion at home” chant and creep Lion back to the zoo under our night sky parachute.



**2-5 year olds**

**3-3.45pm, New Academic Building**

## *The Snow Queen* Story Adventure

Join us for a fun, interactive activity session for accompanied 5-8 year olds, exploring Hans Christian Andersen's classic tale through craft, games, activities and interactive storytelling. Will Gerda be able to make it to the Snow Queen's palace and take the splinter of Magic Mirror from her best friend's eye? Come along and find out – and then help make up a new story inspired by our adventure!



**5-8 year olds**

These events are devised and presented by professional storyteller Justine de Mierre. For more information visit [sowhatsthestory.co.uk/children](http://sowhatsthestory.co.uk/children)

**Monday 31 March, 6-7.30pm**

**LSE Literary Festival and First Story prize-giving event**

## *Reflections*

Speakers: **James Dawson, Kate Kingsley, Geraldine McCaughrean, Jon Robinson**

The culmination of the 2013/14 LSE and First Story creative writing competition see a panel of award-winning young adult authors discussing self-portraits – how much of themselves do they include in their writing?

**James Dawson** is author of dark teen thrillers *Hollow Pike* and *Cruel Summer*. **Kate Kingsley** is the author of *Young, Loaded & Fabulous*. **Geraldine McCaughrean** is one of today's most successful and highly regarded children's authors, her latest novel is *The Middle of Nowhere*. **Jon Robinson** is author of *Nowhere*, the first novel in a captivating new conspiracy thriller series.

*Public ticket available online from Monday 24 March.*  
*School groups please contact [events@lse.ac.uk](mailto:events@lse.ac.uk)*



James Dawson



Kate Kingsley



Geraldine McCaughrean



Jon Robinson



## Hold your event at LSE

From small meeting rooms for eight, through to the 1,000 seat Peacock Theatre, LSE offers a wide choice of centrally located conference facilities, available to hire for events, meetings, lectures and larger conferences.

For further details or enquiries please contact LSE Event Services,  
Tel: **+44 (0)20 7955 7087**, email: [event.services@lse.ac.uk](mailto:event.services@lse.ac.uk)  
or web: [lse.ac.uk/lseeventservices](http://lse.ac.uk/lseeventservices)

**LSE**

THE LONDON SCHOOL  
OF ECONOMICS AND  
POLITICAL SCIENCE ■

**10% discount**  
for LSE Alumni



Monday 3 February – Friday 28 February 2014, Atrium Gallery, Old Building, LSE

## Rainbow Jews

Throughout February, Rainbow Jews will explore Jewish LGBT History and Heritage in the UK. In celebration of LGBT History Month, this pioneering oral history and archive project will display pieces from across the decades, spanning from the 1950s through to the modern day.

This exhibition is open to all, no ticket required. Visitors are welcome during weekdays (Monday – Friday) between 10am and 8pm (excluding bank holidays or unless otherwise stated).

Please check [lse.ac.uk/arts](http://lse.ac.uk/arts) for details. For any queries please email: [arts@lse.ac.uk](mailto:arts@lse.ac.uk) or call 020 7107 5342.



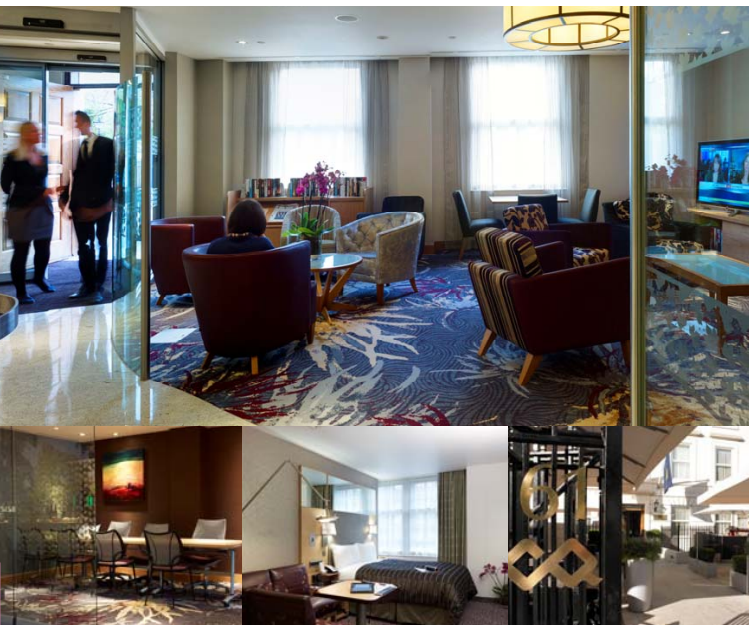
**The Times Literary Supplement.**  
**Now available on tablet and smartphone.**

Subscribe today and save money with a three-month half-price trial. Visit [subscription.co.uk/tls/PT14](http://subscription.co.uk/tls/PT14) or call 01858 438 781 quoting PT14.





CLUB QUARTERS



## CLUB QUARTERS, LINCOLN'S INN FIELDS

### **One of LSE's Preferred Hotels**

Just Minutes from London School of Economics and Political Science, Club Quarters are private, full-service hotels offering a full range of accommodations in a club-like atmosphere. LSE faculty, staff, students and guests are entitled to low fixed rates.

### **Location, Location:**

Centrally located at Kingsway near Holborn and Chancery Lane. The hotel entrance faces Lincoln's Inn Fields, is convenient to both the West End and the City and is within walking distance of Covent Garden and the Theatre District.

### **Reservations:**

Call **+44 (0)20 7451 5800** (Europe)

or online at

**[www.clubquarters.com](http://www.clubquarters.com)** (password: LSE).

# Maps and directions



- a** Alumni Theatre,  
Sheikh Zayed Theatre,  
Thai Theatre and  
Wolfson Theatre,  
New Academic Building  
54 Lincoln's Inn Fields  
London  
WC2A 3LJ

## Disabled access

LSE aims to ensure that people have equal access to these public events.

If you have any access requirements, eg, relating to sensory impairments, please contact [events@lse.ac.uk](mailto:events@lse.ac.uk) in advance of the event you are planning to attend.



## How to get there

### Underground

Holborn (Central/Piccadilly)  
Temple (District/Circle)

### Buses

Buses that stop on or near the Aldwych are numbers:  
1, 4, 6, 9, 11, 13, 15, 23, 26,  
59, 68, x68, 76, 87, 91, 139,  
168, 171, 172, 176, 188, 243,  
341 and 521

### Parking

NCP, Parker Mews,  
Parker Street (off Drury Lane),  
London WC2B 5NT

Other than parking meters on Portugal Street, Sardinia Street, Sheffield Street and Lincoln's Inn Fields there is no parking available near the School.

**The London School of  
Economics and Political  
Science**, Houghton Street  
London WC2A 2AE

### Link to maps

[lse.ac.uk/mapsAndDirections/](https://lse.ac.uk/mapsAndDirections/)