

LSE

THE LONDON SCHOOL  
OF ECONOMICS AND  
POLITICAL SCIENCE ■

Mariana Mazzucato  
Pedro Sanchez  
Dambisa Moyo  
Lawrence Wright  
Kate Hudson  
Sumita Mukherjee  
Rachel Holmes  
Yogendra Yadav

A DIARY OF EVENTS OPEN TO THE  
LSE COMMUNITY AND THE PUBLIC

9 April – 31 August 2018



THE LONDON SCHOOL  
OF ECONOMICS AND  
POLITICAL SCIENCE ■

**15% discount**  
for LSE Alumni

# Executive Education Courses

Intensive programmes for visionary thinkers



Central London



4 – 15 June 2018  
5 – 9 Nov 2018

## Five day intensive courses in

Leadership | Management | Economics | Finance | Global Public Policy



[lse.ac.uk/exec](http://lse.ac.uk/exec)



**+44 (0)20 7849 4615** to speak with one of the team

# WELCOME

Everyone is welcome to attend LSE's public events, where some of the most influential figures in the social sciences can be heard.

Events are generally free and open to all, with entry on a first come, first served basis – unless otherwise stated. It does get busy so we advise people to turn up 20 minutes before the advertised time. For ticketed events, please go to [lse.ac.uk/events](https://lse.ac.uk/events) and fill in the online booking form to request a ticket. Allocations of tickets are set aside for LSE staff and students.

Transcripts, podcasts and videos of an increasing number of LSE events are available online after the event at [lse.ac.uk/events](https://lse.ac.uk/events). If you fancy grabbing a bite to eat before an event, or you want to sit and discuss the event with friends afterwards, there are a range of LSE catering outlets on campus. To see the different venues and their opening times please visit [lse.ac.uk/cateringservices](https://lse.ac.uk/cateringservices).

Just economics and politics? Think again. While LSE does not teach arts or music, there is a vibrant cultural side to the School – from weekly Thursday lunchtime free music concerts in the Shaw Library and an LSE orchestra and choir with their own professional conductors, to various film, art and photographic student societies and artist-in-residence projects. For more information please visit [lse.ac.uk/arts](https://lse.ac.uk/arts).



**Alan Revel**, Head of Events

---

## TICKETING INFORMATION

**Events are generally free and open to all, with entry on a first come, first served basis – unless otherwise stated. If a ticket is required this will be indicated with the following symbol:**

**TICKET**



School of  
**Public Policy**

**BUILD  
YOUR  
FUTURE...**

**... WITH AN  
EMPA BUILT  
AROUND YOU**

## **LSE Executive Master of Public Administration**

### **Why choose the EMPA at LSE?**

At LSE you'll learn directly from experts in economics, policy evaluation and political science. The executive format of our Master of Public Administration means you can combine your studies with your current job – no career break necessary.

### **What makes it so different?**

- Over 19 months you'll learn in intense teaching blocks that are easier to fit in with your work schedule.
- Our technical training modules and practical workshops allow you to apply your new knowledge in your current role before you complete the course.
- There is no distance learning. Everything is taught face-to-face on campus at LSE so you can interact directly with our leading academics and invited experts in policy-making.

### **Who will you be studying with?**

Our alumni include senior government officials, hedge fund managers, partners at major consulting firms, successful lawyers and experienced NGO executives.

**NO CAREER BREAK NECESSARY**

**19 months** from start to finish in an executive format to suit working professionals

**8** separate **weeks of intense teaching** so you can continue to work while you learn

**3 weekends** of inspirational "Policy in Practice" sessions led by renowned faculty and with the input of leading practitioners and policy makers

**22** **world leading experts** in economics, politics and public policy

**11** **areas of study** to match your interest, with core modules in economics, political science, and policy evaluation, and specialist option modules covering a range of contemporary policy topics

**FIND OUT MORE: [www.lse.ac.uk/school-of-public-policy/empa](http://www.lse.ac.uk/school-of-public-policy/empa)**

# SUMMER TERM HIGHLIGHTS

Some highlighted events from this term's programme



## **The Value of Everything: making and taking in the global economy**

**Mariana Mazzucato**

**Monday 23 April**

PAGE 7



## **Edge of Chaos: why democracy is failing to deliver economic growth**

**Dambisa Moyo**

**Thursday 3 May**

PAGE 11



## **MUSIC AND ART**

### **At Last! Votes for Women**

PAGE 20

FULL LISTINGS AT  
**[lse.ac.uk/events](http://lse.ac.uk/events)**

# APRIL

## Monday 9, 6.30-8pm

Hong Kong Theatre, Clement House

### **The Great Economists: how their ideas can help us today**

**Linda Yueh** is Fellow in Economics at St Edmund Hall, Oxford University, Adjunct Professor of Economics at London Business School, and Visiting Senior Fellow at LSE IDEAS.

Linda Yueh will discuss her new book, helping us to think about the biggest economic challenges of our time by drawing on the ideas of the great economists. **#LSEYueh**

Info: [events@lse.ac.uk](mailto:events@lse.ac.uk) or call 020 7955 6043.

Hosted by LSE IDEAS

## Tuesday 10, 6.30-8pm

Old Theatre, Old Building

### **Fair Shot: rethinking inequality and how we earn**

**Chris Hughes** is co-founder of the Economic Security Project and co-founder of Facebook. His new book is *Fair Shot: rethinking inequality and how we earn*.

DISCUSSANTS: **Natalie Fenton** is Professor of Media and Communications, Goldsmiths, University of London and Vice Chair of Hacked-Off, of the Media Reform Coalition and the Centre for the Study of Global Media and Democracy. **David Graeber** is Professor of Anthropology at LSE. **Kam Sandhu** is a journalist and editor of *Real Media*.

Chris Hughes makes the case that one-percenters like him should pay their fortune forward in a radically simple way: a guaranteed income for working people. **#LSEfairshot**

Info: [events@lse.ac.uk](mailto:events@lse.ac.uk) or call 020 7955 6043.

Hosted by the International Inequalities Institute

## Wednesday 11, 6.30-8pm

Old Theatre, Old Building

### **Ten Reasons We're Wrong About the World – and Why Things are Better Than You Think**

**Ola Rosling** and **Anna Rosling Rönnlund** are co-founders of the Gapminder Foundation and are Hans Rosling's son and daughter-in-law. Listed as one of *Time Magazine's* 100 most influential people in the world, Hans died in 2017, having devoted the last years of his life to writing *Factfulness*.

Anna and Ola offer a radical new explanation of why our understanding of global trends is systematically wrong, and reveal the ten instincts that distort our perspective. **#LSEfacts**

Info: [events@lse.ac.uk](mailto:events@lse.ac.uk) or call 020 7955 6043.

Hosted by Department of International Development

## Wednesday 18, 6.30-8pm

Sheikh Zayed Theatre, New Academic Building

### **Cultural Studies and the Challenge of Inequality Today**

**Tony Bennett** is Professor, School of Humanities and Communication Arts, University of Western Sydney. **Clive James Nwonka** is Course Tutor for the Atlantic Fellows for Social and Economic Equity, LSE. **Beverley Skeggs** is Academic Director for the Atlantic Fellows for Social and Economic Equity, LSE.

What is the state of British cultural studies today and how can it be used to reflect on the current challenges of inequality? **#LSEculture**

Info: [events@lse.ac.uk](mailto:events@lse.ac.uk) or call 020 7955 6043.

Hosted by Atlantic Fellows for Social and Economic Equity programme, based at the International Inequalities Institute

**EVENTS GET BUSY! WE ADVISE**

**YOU TO ARRIVE 20 MINUTES**

**EARLY TO AVOID DISAPPOINTMENT**



LINDA YUEH  
MONDAY 9



ANNA ROSLING RÖNNLUND  
WEDNESDAY 11



CLIVE JAMES NWONKA  
WEDNESDAY 18

## Monday 23, 6.30-8pm

Old Theatre, Old Building

### **The Value of Everything: making and taking in the global economy**

**Mariana Mazzucato** is Professor in the Economics of Innovation and Public Value at UCL.

Which activities create wealth in our world? Professor Mazzucato argues that if we are to reform capitalism, we urgently need to rethink where wealth comes from. **#LSEMazzucato**  
*Info: [events@lse.ac.uk](mailto:events@lse.ac.uk) or call 020 7955 6043.*

*Hosted by the Centre for Macroeconomics and Department of Economics*

## Monday 23, 6.30-8pm

Wolfson Theatre, New Academic Building

### **Free Will**

**Matthew Broome** is Chair in Psychiatry and Youth Mental Health, University of Birmingham. **Nura Sidarus** is Postdoctoral Researcher in Cognitive Science, Ecole Normale Supérieure. **Helen Steward** is Professor of Philosophy of Mind and Action, University of Leeds.

A philosopher, a psychiatrist and a neuroscientist discuss what recent research into the brain might mean for our understanding of free will. **#LSEFEP**

*Info: [philosophy-forum@lse.ac.uk](mailto:philosophy-forum@lse.ac.uk) or call 020 7955 7539.*

*Hosted by the Forum*

## Monday 23, 6.30-8pm

Sheikh Zayed Theatre, New Academic Building

### **From Transitional to Transformative: justice for conflict-related violence against women**

**Christine Bell** is Director of the Political Settlements Research Programme, Assistant Principal (Global Justice), Co-Director, Global Justice Academy, and Professor of Constitutional Law, University of Edinburgh.

**Aisling Swaine** is Assistant Professor of Gender and Security, Department of Gender Studies, LSE and author of *Conflict-Related Violence Against Women: Transforming Transition*.

In the aftermath of conflict, transformation rather than a transition is required if justice is to play a role in preventing gender violence.

**#LSESwaine**

*Info: [events@lse.ac.uk](mailto:events@lse.ac.uk) or call 020 7995 6043*

*Hosted by the Centre for Women, Peace and Security and Department of Gender Studies*

## Tuesday 24, 6.30-8pm

Old Theatre, Old Building

### **The Struggle for the Arab World**

**Fawaz Gerges** is Professor of International Relations at LSE.

Professor Gerges tells us how the clash between pan-Arab nationalism and pan-Islamism has shaped the history of the region from the 1920s to the present. **#LSEArabworld**

*Info: [events@lse.ac.uk](mailto:events@lse.ac.uk) or call 020 7955 6043.*

*Hosted by the Department of International Relations*

Most finance professionals can drive the car...  
But do they understand  
how the engine works?



At LSE, we believe in understanding why things work. We take you below the surface to understand the fundamentals of finance, giving you the tools to accelerate your career in a changing marketplace.

## MSc Finance (Part-time)

The MSc Finance (Part-time) is LSE's most established Evening Master's programme. Taught in the evenings, it provides a unique opportunity for busy professionals to combine a full-time career with the opportunity to study a world-class MSc Finance programme that is grounded in academic depth and rigour.

**Join us at an Information Evening:**

**26 February 2018 | 23 May 2018 | 18 July 2018**

**Register at [lse.ac.uk/finance](http://lse.ac.uk/finance)**

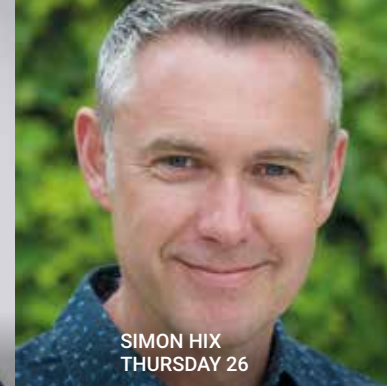




**PRANAB BARDHAN**  
TUESDAY 24



**CATHERINE DE VRIES**  
THURSDAY 26



**SIMON HIX**  
THURSDAY 26

## Tuesday 24, 6.30-8pm

Wolfson Theatre, New Academic Building

### A Global Agenda for Labour

**Pranab Bardhan** is an author, a professor at University of California, Berkeley, and was BP Centennial Professor at LSE 2010/11.

In the face of rising inequality and right-wing populism, how can we cope with the formidable challenge of restoring the countervailing power of labour? **#LSElabour**

Info: [d.patel20@lse.ac.uk](mailto:d.patel20@lse.ac.uk) or call 020 7955 6565.

Hosted by the Department of  
International Development

## Thursday 26, 6.30-8pm

Old Theatre, Old Building

### Euroscepticism and the Future of European Integration

**Tony Barber** is Europe Editor of the *Financial Times*. **Catherine De Vries** is Professor of Politics and Director of the Essex Centre of Experimental Social Science, Department of Government, University of Essex. **Simon Hix** is Harold Laski Professor of Political Science, Department of Government, LSE.

Our panel will discuss how Brexit and the rise of Euroscepticism on the continent may shape the contours of the European project in the coming years. **#LSEEurope**

Info: [events@lse.ac.uk](mailto:events@lse.ac.uk) or call 020 7955 6043.

Hosted by the European Institute

## Monday 30, 6.30-8pm

Old Theatre, Old Building

### Shakespeare

**Jessica Chiba** is Teaching Fellow in English, Royal Holloway, University of London.

**John Crace** is a journalist, critic and author of the *Penguin Incomplete Shakespeare* series.

**Tim Crouch** is an actor, writer and director.

Shakespeare's plays tell us truths about the world. Is he a philosopher? Or is this question simply another way to contain this "myriad-minded" thinker? **#LSEFEP**

Info: [events@lse.ac.uk](mailto:events@lse.ac.uk) or call 020 7955 6043.

Hosted by the Forum

**SOME OF OUR EVENTS ARE LIVE**

**STREAMED – SEE THE FULL LIST**

**AT [lse.ac.uk/live](https://lse.ac.uk/live)**



**LIKE US ON FACEBOOK**

**[facebook.com/lseps](https://facebook.com/lseps)**



**FOLLOW US ON TWITTER**

**[@lsepublicevents](https://twitter.com/lsepublicevents)**

# MAY

## Tuesday 1, 6.30-8pm

Old Theatre, Old Building

### How to Rig an Election

**Nic Cheeseman** is Professor of Democracy at the University of Birmingham and author of *Democracy in Africa: successes, failures and the struggle for political reform*. **Brian Klaas** is a Fellow in Comparative Politics at LSE and author of *The Despot's Apprentice: Donald Trump's Attack on Democracy*.

In this talk, we show how to rig an election – with the hope that the lessons will help save democracy. **#LSElections**

Info: [events@lse.ac.uk](mailto:events@lse.ac.uk) or call 020 7955 6043.

Hosted by the Department of Government

## Tuesday 1, 6.30-8pm

The Venue, Saw Swee Hock Student Centre

### The Labour of Care: work, law and finance

**Lydia Hayes** is a lecturer in law at Cardiff University and specialist in minimum labour standards. **Insa Koch** is Assistant Professor of Law at LSE. **Nicola Lacey** is School Professor of Law, Gender and Social Policy, LSE. **Kevin Lucas** is Regional Manager, UNISON North West and runs the Care Workers Campaign.

If a society is judged on its ability to care for those who need support, what does it mean to turn caring into profit? **#LSEcare**

Info: [n.johnson2@lse.ac.uk](mailto:n.johnson2@lse.ac.uk) or call 020 7106 1109.

Hosted by Atlantic Fellows for Social and Economic Equity programme, based at the International Inequalities Institute

## Wednesday 2, 6.30-8pm

Wolfson Theatre, New Academic Building

### Exploitation, Asymmetries of Power, and Egalitarianism

**Mark Harvey** is Emeritus Professor of Sociology at the University of Essex, and Honorary Professor of Sociology at the University of Manchester and the Sustainable Consumption Institute.

Mark Harvey asks: what are the processes that generate societal wealth inequalities? How are these formed socially, politically, legally and historically? **#LSEHarvey**

Info: [e.ryan@lse.ac.uk](mailto:e.ryan@lse.ac.uk) or call 020 7955 7308.

Hosted by the International Inequalities Institute

## Wednesday 2, 6.30-8pm

Sheikh Zayed Theatre, New Academic Building

### Restoring Trust: how do we tackle the crisis in public information?

**James Ball** is a commissioner of the LSE T3 project and the author of *Post-Truth: How Bullshit Conquered the World*. **Charlie Beckett** is a professor in LSE's Department of Media and Communications and Director of the Truth, Trust and Technology Commission.

**Damian Collins** is the Conservative Member of Parliament for Folkestone and Hythe and Chair of the Digital, Culture, Media and Sport Select Committee. **Baroness Kidron** is a crossbench peer and film director.

As part of the LSE Truth, Trust and Technology Commission consultation process, the audience is invited to put questions and views about misinformation direct to our expert panel. **#LSEt3**

Info: [events@lse.ac.uk](mailto:events@lse.ac.uk) or call 020 7955 6043.

Hosted by the Department of Media and Communications Media Policy Project



**MISSED AN EVENT? PODCASTS  
AND VIDEOS OF MANY PAST LSE  
EVENTS CAN BE DOWNLOADED  
ONLINE AT [lse.ac.uk/events](https://lse.ac.uk/events)**



**BRIAN KLAAS**  
TUESDAY 1



**NICOLA LACEY**  
TUESDAY 1



**DAMBISA MOYO**  
THURSDAY 3

## Wednesday 2, 6.30-8pm

Old Theatre, Old Building

### Europe in a Map: people and borders in times of change

**Simon Glendinning** is Professor of European Philosophy at LSE's European Institute and Director of the Forum for European Philosophy.

**Elsbeth Guild** is Jean Monnet Professor and personam at Queen Mary, University of London and Radboud University Nijmegen. **Natascha Zaun** is Assistant Professor in Migration Studies at LSE's European Institute.

What does a map tell us about Europe? What does it leave out? How can we map Europe and its peoples with renewed force? **#LSEEurope**

*Info: [events@lse.ac.uk](mailto:events@lse.ac.uk) or call 020 7955 6043.*

*Hosted by the European Institute LSE "Europe in Question" Discussion Paper Series*

## Thursday 3, 6.30-8pm

Sheikh Zayed Theatre,  
New Academic Building

### Edge of Chaos: why democracy is failing to deliver economic growth – and how to fix it

**Dambisa Moyo** is an international economist who writes on the macroeconomy and global affairs.

*Edge of Chaos* offers a radical menu of ten ways to improve democracy and deliver more economic growth and prosperity. **#LSEMoyo**

*Info: Tickets available from Thursday 26 April at [lse.ac.uk/events](http://lse.ac.uk/events).*

*Hosted by the Institute of Global Affairs and Firoz Lalji Centre for Africa*

## Tuesday 8, 6.30-8pm

LSE campus, venue TBC  
to ticketholders

**TICKET**

### The Catalan Crisis: populism and secessionism

**Pedro Sánchez** is Secretary General of PSOE (Spanish Socialists and Workers' Party) and leader of the opposition in Spain.

Dr Sánchez will analyse the political, social and economic factors that have led to the growth of populist secessionism in Catalonia and will propose possible solutions. **#LSECatalonia**

*Info: Tickets available from Monday 30 April at [lse.ac.uk/events](http://lse.ac.uk/events).*

*Hosted by the European Institute and the Dahrendorf Forum, a project of LSE IDEAS*

## Tuesday 8, 6.30-8pm

Shaw Library, Old Building

### From People's Dissent to Royal Assent: Sylvia Pankhurst and the struggle for the vote

**Rachel Holmes** is Sylvia Pankhurst's most recent biographer.

On the centenary of the Representation of the People Act, Rachel Holmes remembers and reflects on the roles of revolutionary thinking and militancy in winning votes for women. **#LSEPankhurst**

*Info: [events@lse.ac.uk](mailto:events@lse.ac.uk) or call 020 7955 6043.*

*Hosted by the Ralph Miliband Programme*



PEDRO SÁNCHEZ  
TUESDAY 8



HEIDI MIRZA  
WEDNESDAY 9



JULIA BLACK  
WEDNESDAY 9

## Wednesday 9, 6.30-8pm

Old Theatre, Old Building

### Affirmative Action

**Elizabeth Anderson** is Arthur F Thurnau Professor and John Dewey Distinguished University Professor of Philosophy and Women's Studies, University of Michigan.

**Omar Khan** is Director of Runnymede and Governor at the University of East London.

**Heidi Mirza** is Visiting Professor of Race, Faith and Culture at Goldsmiths, University of London.

"Affirmative action" is one response to the underrepresentation of women and minorities. But what is it and why does it generate so much controversy? **#LSEFEP**

*Info: events@lse.ac.uk or call 020 7955 6043.*

*Hosted by the Forum*

## Wednesday 9 May, 6.30-8pm

Shaw Library, Old Building

### Can Markets Pursue Social Values?

**Julia Black** is Pro Director for Research and Professor in the Department of Law, LSE.

**Martin Cave** is Visiting Professor, Department of Law, LSE, and former Inquiry Chair at the UK Competition and Markets Authority.

**Simon Deakin** is Professor of Law, University of Cambridge and Director of the Centre for Business Research. **Sean Ennis** is Senior Economist, Competition Division, Organisation for Economic Cooperation and Development, Paris.

Theresa May's claim that free market capitalism constitutes "the greatest agent of

collective human progress ever created" raises a complex question: can markets pursue social values? **#LSEBeveridge**

*Info: events@lse.ac.uk or call 020 7955 6043.*

*Hosted by LSE Law and Beveridge 2.0*

## Monday 14, 6.30-8pm

Sheikh Zayed Theatre, New Academic Building

### Collusion: how central bankers rigged the world

**Nomi Prins** is a journalist, former global investment bank executive and author.

Nomi Prins exposes the collusion amongst the world's central banks as they manipulated global markets, dictated economic policy and subsidised private banks in unprecedented ways. **#LSEPrins**

*Info: events@lse.ac.uk or call 020 7955 6043.*

*Hosted by the Department of Economics and Centre for Macroeconomics*

## Monday 14, 6.30-8pm

Wolfson Theatre, New Academic Building

### The Great Reversal: how neoliberalism turned the economic aspirations of liberalism upside down

**Elizabeth Anderson** is John Dewey Distinguished University Professor of Philosophy and Women's Studies at University of Michigan, Ann Arbor.

Liberal economic ideals, once advanced to favour workers, now favour capital owners. Professor Anderson explains

why, and ties this reversal to contemporary populist political crises. **#LSEAnderson**

*Info: gov.comms@lse.ac.uk or call 020 7955 7553.*

*Hosted by the Department of Government*

## Tuesday 15, 6.30-8pm

Sheikh Zayed Theatre, New Academic Building

### Texas, Trump and the Future of America

**Lawrence Wright** is a Pulitzer Prize-winning author, screenwriter, playwright and a staff writer for *The New Yorker* magazine.

Come learn about the most controversial state in America and what it tells us about Donald Trump and the future of the US. **#LSETexas**

*Info: events@lse.ac.uk or call 020 7955 6043.*

*Hosted by the United States Centre*

## Tuesday 15, 6.30-8pm

Wolfson Theatre, New Academic Building

### Animals

**John Ó Maoilearca** is Professor of Film, Kingston University. **Undine Sellbach** is Senior Lecturer in Philosophy, University of Dundee.

**Lynn Turner** is Senior Lecturer in Visual Culture, Goldsmiths, University of London.

Humans have always co-existed with animals. If we seriously acknowledge our relationships with other animals, what does this mean for ethics, art, friendship, and technology? **#LSEFEP**

*Info: philosophy-forum@lse.ac.uk or call 020 7955 7539.*

*Hosted by the Forum*

**EVENTS GET BUSY! WE ADVISE**

**YOU TO ARRIVE 20 MINUTES**

**EARLY TO AVOID DISAPPOINTMENT**



THE LONDON SCHOOL  
OF ECONOMICS AND  
POLITICAL SCIENCE ■

**10% discount**  
for LSE Alumni



## HOLD YOUR EVENT AT LSE

From small meeting rooms for eight, through to the 1,000 seat Peacock Theatre, LSE offers a wide choice of centrally located conference facilities, available to hire for events, meetings, lectures and larger conferences.

For further details or enquiries please contact LSE Event Services, Tel: **+44 (0)20 7955 7087**, email: **event.services@lse.ac.uk** or web: **lse.ac.uk/lseeventservices**





**LAWRENCE WRIGHT**  
TUESDAY 15

© KENNY BRAUN



**NGOZI OKONJO-IWEALA**  
WEDNESDAY 16



**OLMO SILVA**  
WEDNESDAY 16

## Wednesday 16, 6-7.30pm

Old Theatre, Old Building

### In Conversation with Dr Ngozi Okonjo-Iweala

**Ngozi Okonjo-Iweala** is Senior Adviser at Lazard and Board Chair of Gavi, the Vaccine Alliance. She was formerly Finance Minister of Nigeria and Managing Director of the World Bank. She is author of *Reforming the Unreformable: Lessons from Nigeria*.

Former Nigerian Finance Minister Dr Okonjo-Iweala joins Minouche Shafik, LSE Director in conversation on the challenges and victories in the fight against corruption. **#LSEngozi**

Info: [events@lse.ac.uk](mailto:events@lse.ac.uk) or call 020 7955 6043.

Hosted by the International Growth Centre and Firoz Lalji Centre for Africa

## Wednesday 16, 6.30-8pm

Sheikh Zayed Theatre, New Academic Building

### School Autonomy, School Choice and the Quality of Education: evidence from England

**Olmo Silva** is Professor of Real Estate Economics and Finance, LSE.

DISCUSSANT: **Amy Finch** is Head of Strategic Development, Ofsted.

Professor Silva will discuss the conceptual framework and empirical evidence underpinning the idea that autonomy and choice can lead to improvements in education standards in England. **#LSEeducation**

Info: [events@lse.ac.uk](mailto:events@lse.ac.uk) or call 020 7955 6043.

Inaugural Lecture hosted by the Department of Geography and Environment

## Thursday 17, 6-7pm

Sheikh Zayed Theatre, New Academic Building

### Fluctuating Formality: anthropology and the structure of difference

**Maxim Bolt** is Reader in Anthropology and African Studies, University of Birmingham.

Dr Bolt reflects on the concept of structure, focusing on formality as a kind of structuring and a lens for understanding the production of difference. **#LSEMalinowski**

Info: [events@lse.ac.uk](mailto:events@lse.ac.uk) or call 020 7955 6043.

Malinowski Memorial Lecture hosted by the Department of Anthropology

## Friday 18, 6.30-8pm

Wolfson Theatre, New Academic Building

### Pimp State: how should society respond to the global sex trade?

**Kat Banyard** is author of *Pimp State: Sex, Money and the Future of Equality* and founder of UK Feminista.

How society should respond to the rise of the sex trade is shaping up to be one of the 21st century's big questions. **#LSESuffrage18**

Info: [library.enquiries@lse.ac.uk](mailto:library.enquiries@lse.ac.uk) or call 020 7852 7229.

Hosted by LSE Library

## Monday 21, 6.30-8pm

Old Theatre, Old Building

### Reason

**Alex Douglas** is Lecturer in Philosophy, University of Edinburgh. **Peter Millican** is Gilbert Ryle Fellow and Professor of

Philosophy, Hertford College, University of Oxford. **Kristen Walsh** is Assistant Professor of Philosophy, University of Nottingham.

Since at least the Enlightenment, philosophers have argued over the relationship between reason and knowledge. Why? What hangs on the answer? **#LSEFEP**

*Info: philosophy-forum@lse.ac.uk or call 020 7955 7539.*

*Hosted by the Forum*

---

## Tuesday 22, 6.30-8pm

Wolfson Theatre, New Academic Building

### Indian Suffragettes: female identities and transnational networks

**Sumita Mukherjee** is Senior Lecturer in History, University of Bristol.

Dr Mukherjee considers the impact Indian campaigners for the female vote in Asia, Europe, USA, Britain and the British Empire had on campaigns in the Indian subcontinent.

**#LSESuffrage18**

*Info: library.enquiries@lse.ac.uk or call 020 7852 7229.*

*Hosted by LSE Library*

---

## Wednesday 23, 6.30-8pm

Old Theatre, Old Building

### Unelected Power: the quest for legitimacy in central banking and the regulatory state

**Paul Tucker** is a fellow at the Harvard Kennedy School and Chair of the Systemic Risk Council.

Central bankers pull the levers of our economic well-being. Paul Tucker explains how to ensure agents of the administrative state remain stewards of the common good. **#LSETucker**

*Info: events@lse.ac.uk or call 020 7955 6043.*

*Hosted by the Financial Markets Group and Systemic Risk Centre*

---

## Thursday 24, 6.30-8pm

Old Theatre, Old Building

### The French Revolution: one year on

**Jean Pisani-Ferry** is a professor at Sciences Po Paris and the Hertie School

of Governance in Berlin. He was the Director for Programme and Ideas of Emmanuel Macron's presidential campaign.

The lecture will take stock of the transformation of French economic policy following the sweeping electoral success of Emmanuel Macron, and appraise its achievements. **#LSEFrance**

*Info: events@lse.ac.uk or call 020 7955 6043.*

*Hosted by the European Institute and the Dahrendorf Forum, a project of LSE IDEAS*

---

## Thursday 24, 6.30-8pm

Wolfson Theatre, New Academic Building

### Radical Help: reforming the welfare state

**Hilary Cottam** is a social entrepreneur and has advised governments, companies and third sector organisations in the UK and internationally.

Dr Cottam discusses her forthcoming book *Radical Help: How we can Remake Relationships Between Us and Revolutionise the Welfare State* drawing on her ideas of relational welfare. **#LSEBeveridge**

*Info: library.enquiries@lse.ac.uk or call 020 7852 7229.*

*Hosted by LSE Library and Beveridge 2.0*

---

## Tuesday 29, 6.30-8pm

Old Theatre, Old Building

### Death

**Conor Cunningham** is Associate Professor in Theology and Philosophy, University of Nottingham. **Laura Salisbury** is Professor in Medicine and English Literature, University of Exeter. **Louise Winter** is Funeral Director at Poetic Endings, and director of the "Life. Death. Whatever." festival.

Can medicine, technology, art and philosophy help us understand death? We bring together practitioners and thinkers to discuss the possibility of a good death. **#LSEFEP**

*Info: events@lse.ac.uk or call 020 7955 6043.*

*Hosted by the Forum*

---

# JUNE

## Monday 4, 6.30-8pm

Wolfson Theatre, New Academic Building

### Campaigning in the Age of Trump: CND at 60

**Kate Hudson** is a leading anti-nuclear and anti-war campaigner and General Secretary of the Campaign for Nuclear Disarmament.

2018 is the 60th anniversary of the Campaign for Nuclear Disarmament (CND). Founded in 1958, CND has been a powerful collective voice against nuclear weapons. **#LSEhistoryCND**

Info: [library.enquiries@lse.ac.uk](mailto:library.enquiries@lse.ac.uk) or call 020 7852 7229.

Hosted by LSE Library

## Monday 4, 6.30-8pm

Sheikh Zayed Theatre, New Academic Building

### How to Lose a Referendum

**Jason Farrell** is a senior political correspondent for *Sky News*. **Paul Goldsmith** is a politics and economics teacher at Latymer Upper School and author of *Goldblog*. Their new book is *How to Lose a Referendum*.

Why was a project designed for common peace and prosperity so hard to defend?

The authors identify 18 reasons why the UK voted for Brexit. **#LSEBrex**

Info: [events@lse.ac.uk](mailto:events@lse.ac.uk) or call 020 7955 6043.

Hosted by the European Institute

## Monday 4, 6.30-8pm

Old Theatre, Old Building

### Football

**Simon Critchley** is Han Jonas Professor of Philosophy, New School for Social Research, New York City. **Gerald Moore** is Associate Professor of Philosophy, Durham University.

**Emily Ryall** is Reader in the Philosophy of Sport, University of Gloucestershire.

Why is it football, above all sports, that so many philosophers revere? We give it 110 per cent to find out what makes for a good game. **#LSEFEP**

Info: [events@lse.ac.uk](mailto:events@lse.ac.uk) or call 020 7955 6043.

Hosted by the Forum

## Tuesday 5, 6.30-8pm

Old Theatre, Old Building

### The Challenge to Diversity and Democracy in India Today

**Yogendra Yadav** is a nationally-renowned Indian psephologist, an expert on comparative democracy and National President of the newly-formed Swaraj India party.

What can we learn from the current challenge to the idea of a diverse and democratic India? Does this demand rethinking the idea of India as a "State-Nation"? **#LSEIndia**

Info: [events@lse.ac.uk](mailto:events@lse.ac.uk) or call 020 7955 6043.

Hosted by the Ralph Miliband Programme







THE LONDON SCHOOL  
OF ECONOMICS AND  
POLITICAL SCIENCE ■



UNIVERSITY OF CAPE TOWN  
IYUNIVESITHI YASEKAPA • UNIVERSITEIT VAN KAAPSTAD

## LSE-UCT July School in CapeTown

25 June – 6 July 2018

Find out why **99%** of attendees would recommend us to a friend or colleague | [lse.ac.uk/lseuctjulychool](http://lse.ac.uk/lseuctjulychool)



THE LONDON SCHOOL  
OF ECONOMICS AND  
POLITICAL SCIENCE ■



北京大學  
PEKING UNIVERSITY

## LSE-PKU Summer School in Beijing, China

6-17 August 2018

Innovative courses for students and professionals | [lse.ac.uk/lsepkuprogramme](http://lse.ac.uk/lsepkuprogramme)



**JASON FARRELL**  
MONDAY 4



**YOGENDRA YADAV**  
TUESDAY 5



**ANN PETTIFOR**  
TUESDAY 26

## Tuesday 5, 6.30-8pm

Sheikh Zayed Theatre, New Academic Building

### **Finance, Competition and Innovation-Based Growth**

**Philippe Aghion** is a professor at the College de France and LSE, and a fellow of the Econometric Society and of the American Academy of Arts and Sciences.

Professor Aghion delivers the annual *Economica* Coase lecture. **#LSECoase**

Info: [events@lse.ac.uk](mailto:events@lse.ac.uk) or call 020 7955 6043.

*Economica* Coase Lecture hosted by the Department of Economics and *Economica*

## Thursday 7, 6.30-8pm

Sheikh Zayed Theatre, New Academic Building

### **Tracking the Rise in Global Income Inequality: new evidence from the World Inequality Report 2018**

**Lucas Chancel** is the general coordinator of the World Inequality Report and Co-Director of the World Inequality Lab.

DISCUSSANTS: **Duncan Green** is Senior Strategic Adviser at Oxfam GB and Professor in Practice in International Development at LSE. **Rebecca Simson** is Junior Research Fellow, Institute for Historical Research.

The World Inequality Report 2018, coordinated by Thomas Piketty and his colleagues, provides the first systematic assessment of globalisation in terms of economic inequality. **#LSEWIR2018**

Info: [e.ryan@lse.ac.uk](mailto:e.ryan@lse.ac.uk) or call 020 7955 7308.

Hosted by the International Inequalities Institute

## Friday 15, 6.30-9pm

Wolfson Theatre, New Academic Building

### **Asunder**

*Asunder* tells the story of an English town during World War I. This film screening is followed by a Q&A with its director and producer Professor Esther Johnson, Principal Lecturer in Film and Visual Media at Sheffield Hallam University. **#LSESuffrage18**

Info: [library.enquiries@lse.ac.uk](mailto:library.enquiries@lse.ac.uk) or call 020 7852 7229.

Hosted by LSE Library

## Tuesday 26, 6.30-8pm

Hong Kong Theatre, Clement House

### **Can Society Once Again Make Finance Servant, Not Master of the Economy?**

**Ann Pettifor** is the author of *The Production of Money*, Director of PRIME economics, and a member of Labour's Economic Advisory Committee. She was one of a few to predict the Great Financial Crisis in her 2006 book *The Coming First World Debt Crisis*.

Given the dependency of the finance sector on the largesse of the state and its taxpayers, a Labour government could transform the relationship between Finance and Industry.

**#LSEmoney**

Info: [events@lse.ac.uk](mailto:events@lse.ac.uk) or call 020 7955 6043.

# JULY

**Monday 9, 6.30-8pm**

Hong Kong Theatre, Clement House

**Adam Smith: what he thought,  
and why it matters**

**Jesse Norman** is Parliamentary Under Secretary of State for the Department for Transport.

Jesse Norman offers a Smithian analysis of contemporary markets, predatory capitalism and the 2008 financial crash; and crucial issues of inequality, human dignity and exploitation. **#LSEAdamSmith**

Info: [events@lse.ac.uk](mailto:events@lse.ac.uk) or call 020 7955 6043.

Hosted by the Department of Economics and  
Centre for Macroeconomics

---



Thinks



THE LONDON SCHOOL  
OF ECONOMICS AND  
POLITICAL SCIENCE ■



LSE Thinks highlights how our academics are informing public debate through research, blog posts, video interviews, public lectures, podcasts and media commentary.

To find out more about LSE Thinks and to subscribe for updates visit: **[lse.ac.uk/LSEthinks](https://lse.ac.uk/LSEthinks)**

# MUSIC AND ART

Concerts and exhibitions



## Monday 23 April – Friday 31 August

LSE Library Gallery

### At Last! Votes for Women

The campaign to achieve the Parliamentary vote for women took 52 years, from 1866 to 1918. Women used lawful and unlawful methods to get the vote which resulted in partial voting rights for women. It took another 10 years before women could vote on equal terms with men.

Featuring key items from The Women's Library collection, this exhibition focuses on the latter years of the campaign and the work of the constitutional suffragists, the well-known suffragettes and an off-shoot group, the Women's Freedom League. **#LSESuffrage18**

Info: [library.enquiries@lse.ac.uk](mailto:library.enquiries@lse.ac.uk) or call 020 7955 7229. Visitors are welcome Monday-Friday 9am-7pm, Saturday-Sunday 11am-6pm. Please see [lse.ac.uk/library/exhibitions](http://lse.ac.uk/library/exhibitions) for details.

LSE Library public exhibition

## Tuesday 4 July, 6.30-9pm

Shaw Library, Old Building

**TICKET**

### Ethel Smyth – Grasp the Nettle

To celebrate the 100th anniversary of the Representation of the People Act 1918, this new play, written by and starring Lucy Stevens, features music around the life of composer and suffragette Ethel Smyth. **#LSESuffrage18**

Info: Tickets cost £5/£7 and are available from [lse.ac.uk/library](http://lse.ac.uk/library).

Hosted by LSE Library

## Wednesday 25 July, 1-2pm

LSE Library education room

### Rare Birds – Voices of Holloway Prison

Teesside poet Natalie Scott presents a poetry performance, which creatively retells the story of the notorious London prison from 1852 to 1955 drawing on material from the Women's Library collection. **#LSESuffrage18**

Info: [library.enquiries@lse.ac.uk](mailto:library.enquiries@lse.ac.uk) or call 020 7955 7229.

Hosted by LSE Library







## How to get to LSE

### Link to maps

[lse.ac.uk/mapsAndDirections](http://lse.ac.uk/mapsAndDirections)

### Underground

Holborn (Central/Piccadilly)

Temple (District/Circle)

### Buses

Buses that stop on or near the Aldwych are numbers: 1, 4, 6, 9, 11, 13, 15, 23, 26, 59, 68, x68, 76, 87, 91, 139, 168, 171, 172, 176, 188, 243, 341 and 521

### Cycling

There is a Santander London Cycle Hire scheme docking station on Houghton Street

### Parking

NCP, Parker St (off Drury Lane) WC2

Other than parking meters on Portugal Street, Sardinia Street, Sheffield Street and Lincoln's Inn Fields there is no parking available near the School.

## Mailing list

Contact LSE Events with your name and address to either join or leave the mailing list for this leaflet.

Tel: **020 7955 6043**

Email: [events@lse.ac.uk](mailto:events@lse.ac.uk)

Mail: The London School of Economics and Political Science, Houghton Street, London WC2A 2AE

Although all possible care has been taken to ensure that the information in this leaflet is accurate, no responsibility can be taken for any errors or omissions however caused. Check event details at [lse.ac.uk/events](http://lse.ac.uk/events)

Freedom of thought and expression is essential to the pursuit, advancement and dissemination of knowledge. LSE seeks to ensure that intellectual freedom and freedom of expression within the law is secured for all our members and those we invite to the School.



## LSE theatres

### Hong Kong Theatre

Clement House, Aldwych

### Old Theatre and Shaw Library

Old Building, Houghton Street

### Peacock Theatre

Portugal Street

### Sheikh Zayed Theatre and Wolfson Theatre

New Academic Building,  
54 Lincoln's Inn Fields

## Accessibility and special requirements

LSE aims to ensure equal access to these public events. The majority of venues are wheelchair accessible. Wheelchair spaces should be reserved in advance of the event.

The larger venues are fitted with infrared hearing support systems.

Please contact [events@lse.ac.uk](mailto:events@lse.ac.uk) in advance of the event you plan to attend so that arrangements, where possible, can be made. For more information visit [lse.ac.uk/events](http://lse.ac.uk/events)

DisabledGo have produced detailed access guides to the LSE campus and residences, and route maps between key locations. These are available at [lse.ac.uk/DisabledGo](http://lse.ac.uk/DisabledGo)

## Parking for disabled badge holders

Visit the Westminster City Council website to find the nearest Blue Badge parking bays to LSE.

This information is also available on request in alternative formats.

# [lse.ac.uk/events](http://lse.ac.uk/events)

The poster features a background image of three smiling students (two women and one man) in a social setting. The top left has a yellow bar, and the top right has a blue bar. The LSE logo is in a red box. The text 'Summer School 1989-2018' is in white. The '30 YEARS' text is large, with the '30' in a colorful, segmented font. The main title 'LSE Summer School' is in large white letters. A purple box on the left contains the dates '18 June - 17 August 2018'. A yellow speech bubble on the right contains the statistic '96%' and a testimonial. The website 'lse.ac.uk/summerschool' is at the bottom left.

**LSE**

Summer  
School  
1989-2018

**30 YEARS**

# LSE Summer School

**18 June –  
17 August  
2018**

**96%**

**of our 2017 students  
would recommend  
the LSE Summer  
School to a friend.**

2017 Summer School  
Cohort Survey

**[lse.ac.uk/summerschool](http://lse.ac.uk/summerschool)**