

| 3 voters | 4 alt | | | 5 alt | | |
|---|----------------|----------------|------------|----------------|----------------|------------|
| Rule\Extension | leximax | leximin | TBR | leximax | leximin | TBR |
| Plurality | 0 | 0,3750 | 0,2943 | 0 | 0,4800 | 0,3890 |
| q-Approval q=2 | 0,6111 | 0,4722 | 0,3941 | 0,7150 | 0,7750 | 0,4650 |
| Borda | 0,6806 | 0,6111 | 0,5122 | 0,7913 | 0,7575 | 0,6914 |
| Black | 0,3472 | 0,2778 | 0,2760 | 0,4517 | 0,4146 | 0,4086 |
| Uncovered Set I | 0,2951 | 0,1111 | 0,2222 | 0,4335 | 0,1600 | 0,3189 |
| Strongest q-Pareto Simple Majority | 0,3125 | 0,1736 | 0,2179 | 0,4138 | 0,3121 | 0,3063 |
| Threshold | 0,4097 | 0,4097 | N/A | 0,6713 | 0,6503 | N/A |

Table 1: Kelly's index with 3 voters

| 4 voters | 4 alt | | | 5 alt | | |
|---|----------------|----------------|------------|----------------|----------------|------------|
| Rule\Extension | leximax | leximin | TBR | leximax | leximin | TBR |
| Plurality | 0,4219 | 0,5156 | 0,3247 | 0,4320 | 0,6240 | 0,4257 |
| q-Approval q=2 | 0,6852 | 0,4907 | 0,4256 | 0,7040 | 0,4990 | 0,4781 |
| Borda | 0,6094 | 0,5831 | 0,5002 | 0,7248 | 0,7079 | 0,6390 |
| Black | 0,4757 | 0,4021 | 0,2635 | 0,5994 | 0,5156 | 0,3572 |
| Uncovered Set I | 0,7053 | 0,7018 | 0,5525 | 0,8027 | 0,7959 | 0,6630 |
| Strongest q-Pareto Simple Majority | 0,4757 | 0,4021 | 0,2635 | 0,5989 | 0,5156 | 0,3549 |
| Threshold | 0,6847 | 0,6584 | N/A | 0,6547 | 0,6445 | N/A |

Table 2: Kelly's index with 4 voters

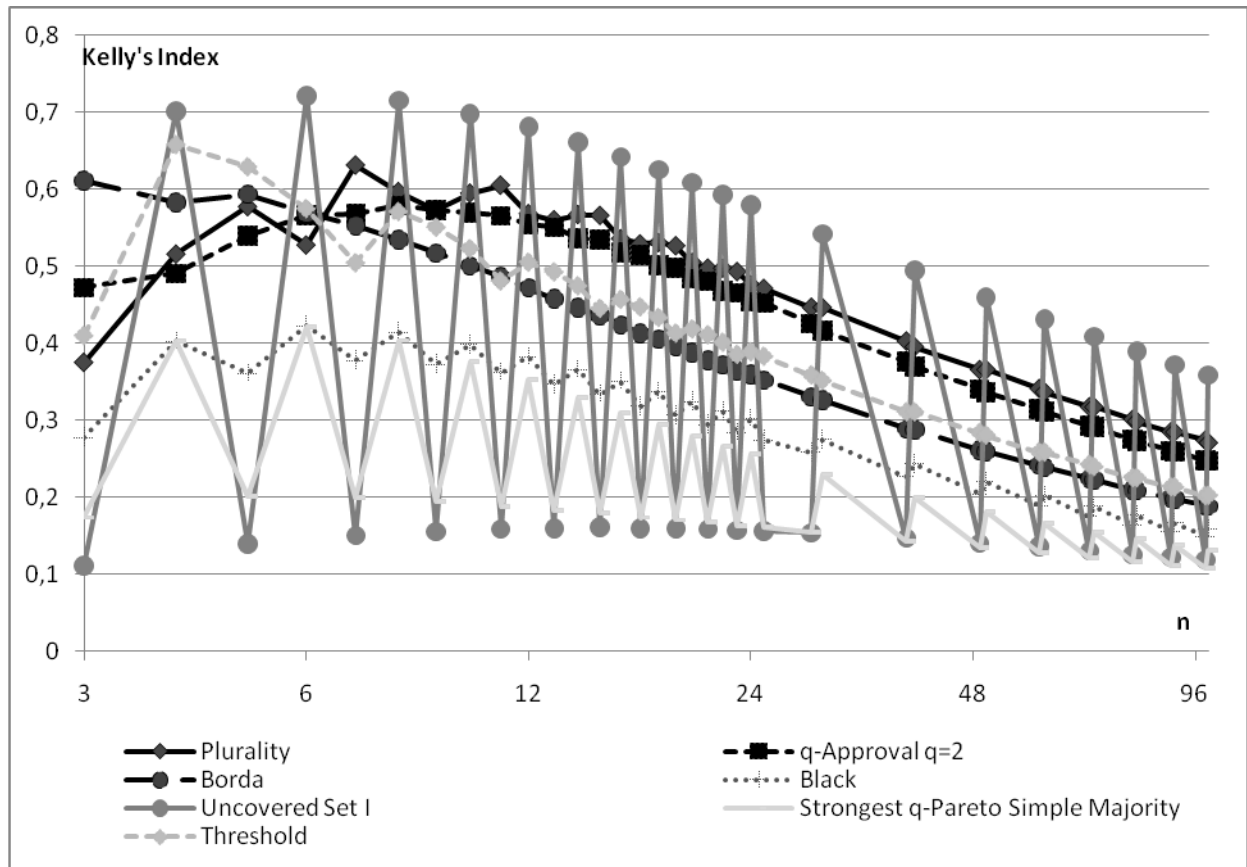


Figure 1: Kelly's index for Leximin extension method, $m=4$

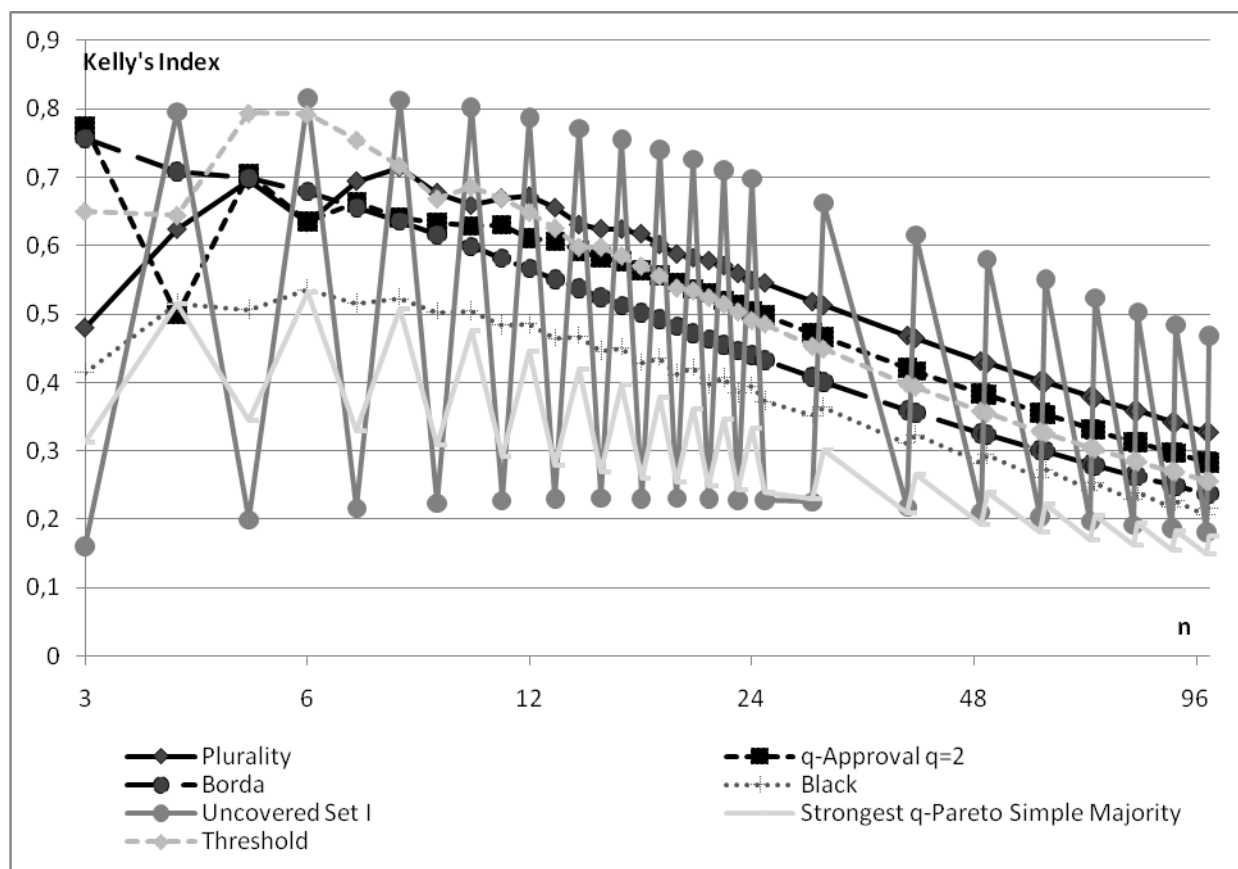


Figure 2: Kelly's index for Leximin extension method, $m=5$

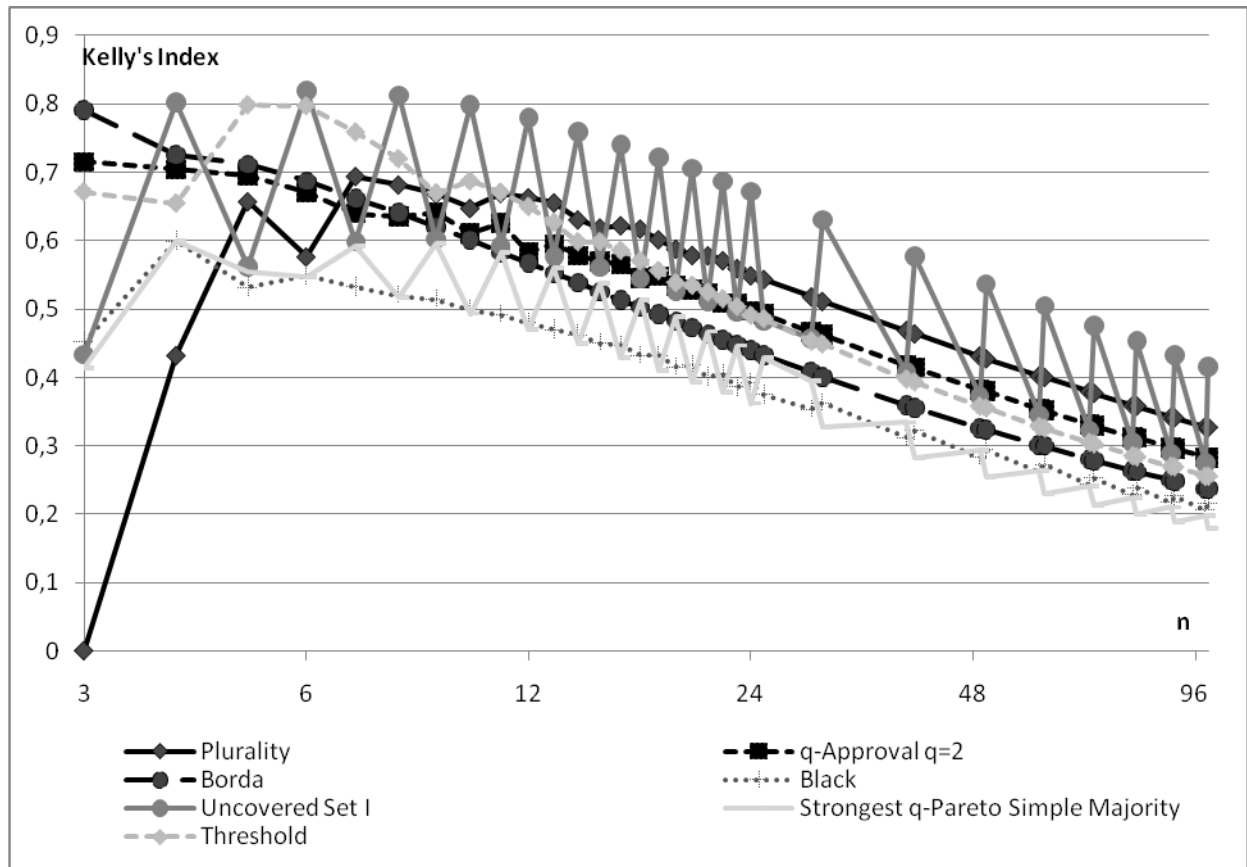


Figure 3: Kelly's index for Leximax extension method, $m=5$

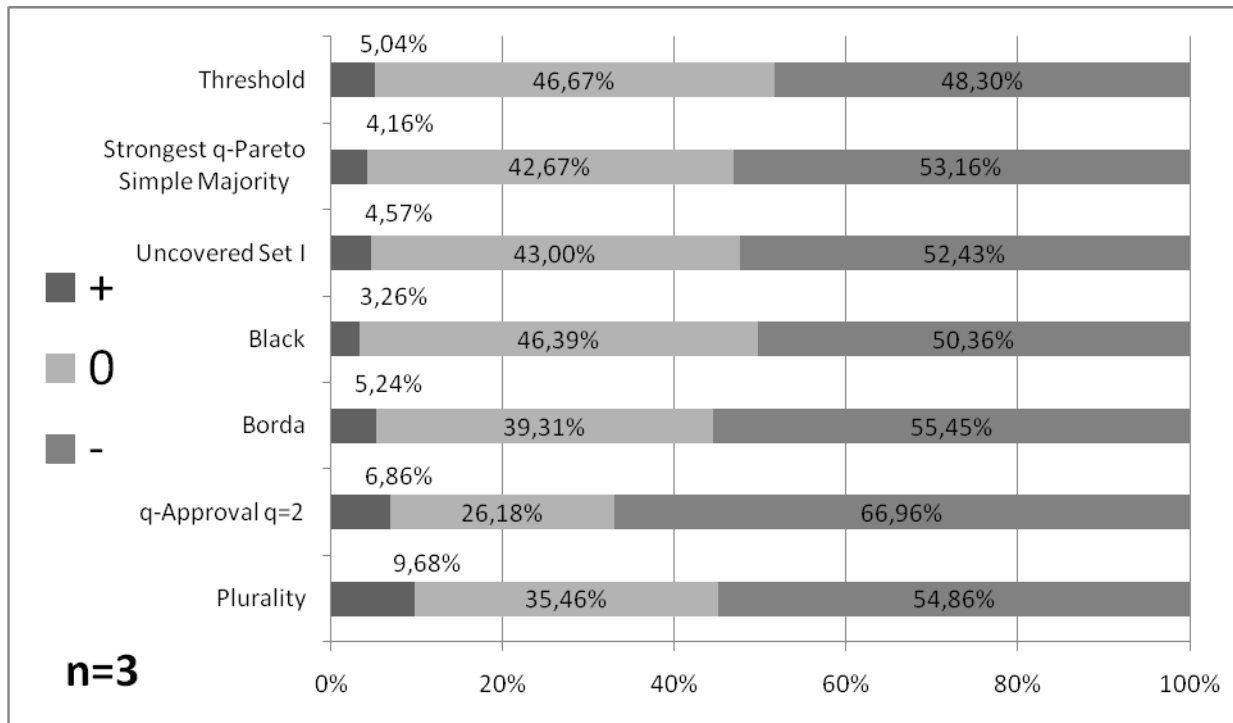


Figure 4: I_1 index for Leximin extension method, $n=3$, $m=5$

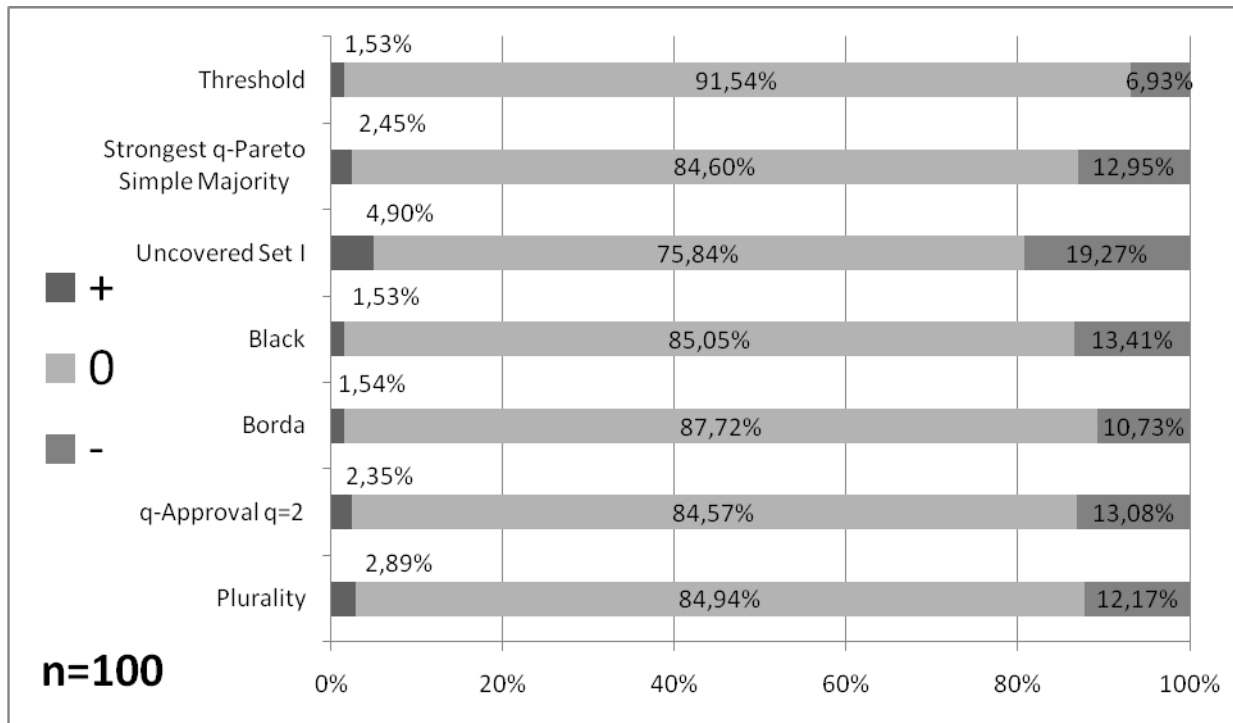


Figure 5: I_1 index for Leximin extension method, $n=100$, $m=5$

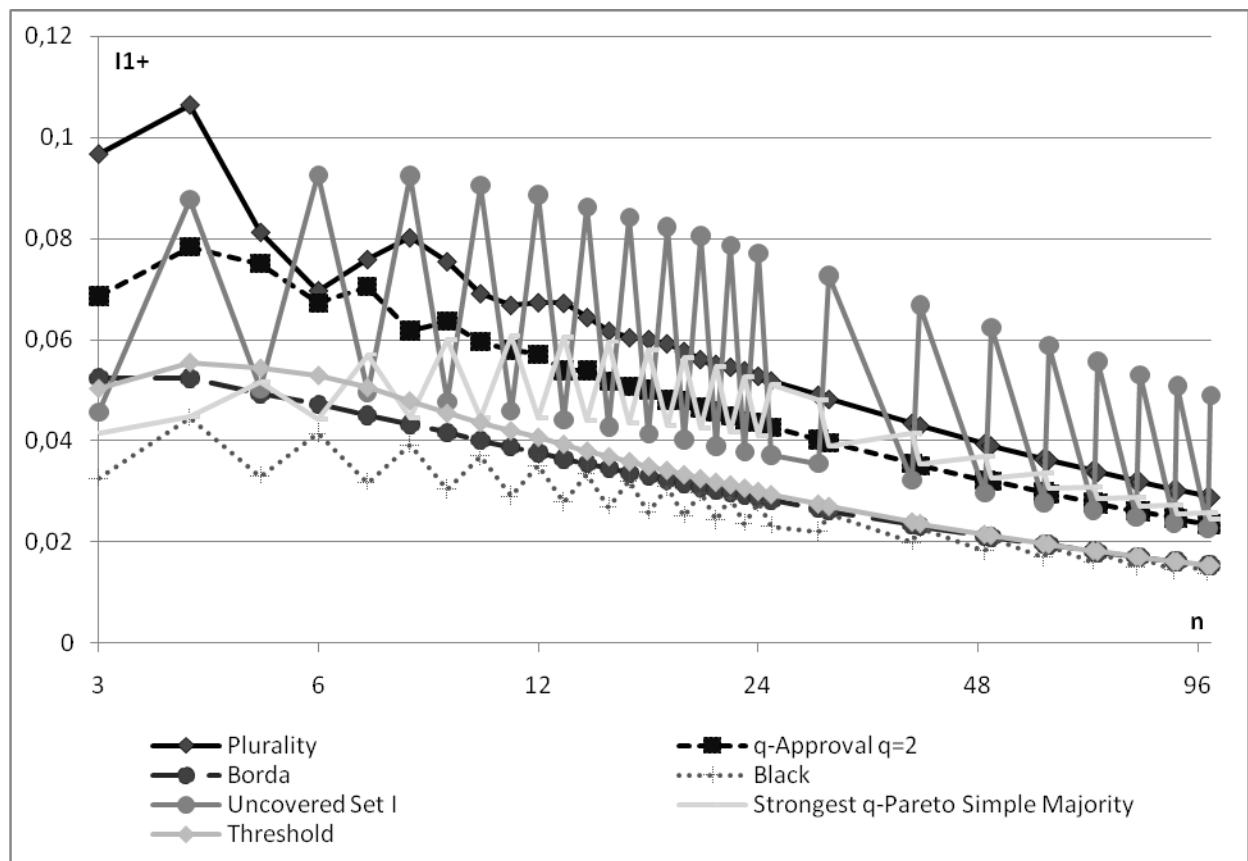


Figure 6: I_1^+ index for Leximin extension method, $m=5$